

(25)

K39(L)
1913

BURMA GAZETTEER

PAKOKKU DISTRICT

VOLUME B

No. 23

17092

WEST PAKISTAN CIVIL SECRETARIAT
LIBRARY COPY

(To be returned to the Library when done with)

4

BURMA GAZETTEER

PAK[^]OKKU DISTRICT

VOLUME B

INCLUDING TOWN AND VILLAGE
CENSUS TABLES

K39(4)

No. 23

8



RANGOON

OFFICE OF THE SUPERINTENDENT, GOVERNMENT PRINTING, BURMA

1913

LIST OF AGENTS
FOR THE
SALE OF GOVERNMENT PUBLICATIONS.

IN INDIA :

THACKER, SPINK & Co., Calcutta and Simla.
W. NEWMAN & Co., Calcutta.
THACKER & Co., Bombay.
HIGGINBOTHAM & Co., Madras.
SUPERINTENDENT, AMERICAN BAPTIST MISSION PRESS, Rangoon.
* D. B. TARAPOREVALA & SONS & Co., 103, Meadow Street, Fort Bombay.
BUTTERWORTH & Co. (INDIA), LTD., 8-2, Hastings Street, Calcutta.

IN ENGLAND :

HENRY S. KING & Co., 65, Cornhill, E.C., London.
CONSTABLE & Co., 10, Orange Street, Leicester Square, W.C.
KEGAN PAUL, TRENCH, TRUBNER & Co., 68—74, Carter Lane, E.C.
BERNARD QUARITCH, 11, Grafton Street, New Bond Street, W.
P. S. KING & SON, 2 & 4, Great Smith Street, Westminster, London, W.S.
GRINDLAY & Co., 54, Parliament Street, S.W.
T. FISHER UNWIN, 1, Adelphi Terrace, London, W. C.
B. H. BLACKWELL, 50 & 51, Broad Street, Oxford.
DEIGHTON BELL & Co., Cambridge.
W. THACKER & Co., 2, Creed Lane, London, E.C.
LUZAC & Co., 46, Great Russell Street, London, W.C.
OLIVER & BOYD, Tweeddale Court, Edinburgh.
E. PONSONBY, Limited, 116, Grafton Street, Dublin.

ON THE CONTINENT :

R. FRIEDLANDER & SOHN, 11, Carlstrasse, Berlin, Germany.
OTTO HARRASOWITZ, Leipzig, Germany.
KARL W. HIERSEMANN, Leipzig, Germany.
ERNEST LEROUX, 28, Rue Bonaparte, Paris, France.
MARTINUS NIJHOFF, The Hague, Holland.

* For the sale of official publications excluding those of the Legislative Department of the Government of Burma.

NOTICE TO SECOND EDITION.

The first edition of the B Volumes of the District Gazetteer issued in September 1906 was in many respects an experimental publication. Experience has suggested considerable condensation in many directions and a more systematic arrangement of the information given. Furthermore the Town and Village Census Tables issued as Parts III and IV of the Burma Census Report of 1901 were inconveniently bulky for frequent reference. The decision to publish them in district volumes naturally suggested their amalgamation with the B Volume of the District Gazetteer, a suggestion which has been carried into effect.

The resultant modifications are briefly :—

- (i) Reduction from folio to octavo size.
- (ii) Inclusion of a Table of Contents.
- (iii) Condensation of Tables giving general information concerning principal towns and villages.
- (iv) Addition of list of fisheries.
- (v) Omission of Township details in Tables IV and XIII.
- (vi) Omission of Tables VII, XX, XXII and XXV.
- (vii) Addition of Town and Village Census Tables.

2. An important change has been made in the grouping of figures for the Town and Village Census Tables. The majority of District Officers who were consulted criticised the grouping by residential units on the grounds :—

- (i) that a large proportion of the hamlets entered could not be identified ;
- (ii) that the tables while purporting to give residential units really gave in many instances the artificial groups which had been adopted as census blocks ;
- (iii) that a comparatively large number of entries such as *hlezeik* (landing place), *lèdè* (field hut), *tèzu* (collection of huts), which were not really hamlets, detracted from the value of the Tables ;
- (iv) that statistics by residential units were not required for administrative purposes ;
- (v) that grouping by hamlets rendered the tables for a township so long that speedy reference was impossible.

These criticisms suggested that a grouping by village-tracts would meet the requirements of local officers. This course has been adopted, though with somewhat disappointing results. It has been impossible in many cases to reconcile the lists of village-tracts as given in the Census Records and as entered in the District Registers. Even when the reconciliation has been effected it has sometimes been impossible to allot the population enumerated to the village-tracts as finally determined. Many obvious errors have been detected but their correction would entail a disproportionate amount of labour. The defects in the Census Village Tables must be regarded as the inevitable result of the defects in the official records of village-tracts, and serve to indicate the necessity for a thorough reform of the records concerned with village administration in most districts.

CONTENTS.

PART I.—GENERAL INFORMATION.

	PAGE
Position, Area and Population	I
Administrative Subdivisions	I
Administrative Changes	I
District Staff	I
Establishments	2
Subdivisional, Township, etc., Establishments	2 & 3
Police Strength and Distribution	4
General information concerning principal Towns and Villages	5 & 6
Ferries	7
Fisheries	7
Main Roads	8
District Population arranged by Race and Language	8
Immigration and Emigration	8 & 9
Literacy	9
Rates of Wages	9

PART II.—STATISTICAL TABLES.

I.—Temperature and Rainfall	10
II.—Distribution of Population	11
III.—Vital Statistics	12
IV.—Agricultural Statistics	13
V.—Crop Outturns	14
VI.—Loans	15
VII.—Wages and Prices (omitted in 2nd edition),	
VIII.—Forests	16
IX.—Minerals	17
X.—Trade (no returns).	
XI.—Roads	18
XII.—General Revenue	19
XIII.—Land Revenue	20
XIV.—Miscellaneous Revenue	21
XV.—District Cess Fund	22
XVI.—Municipalities	23
XVII.—Crime	24
XVIII.—Criminal Justice	25

PAKÔKKU DISTRICT.

PART I.—GENERAL INFORMATION.

POSITION, AREA AND POPULATION.

Pakôkku.—A district in the Magwe Division of Upper Burma lying between $20^{\circ} 48'$ and $22^{\circ} 50' N.$; and $93^{\circ} 59'$ and $95^{\circ} 24' E.$ Its area is 6,210 square miles; and its population was 312,941 in 1891; 357,632 in 1901 and 409,909 in 1911.

ADMINISTRATIVE SUBDIVISIONS.

Subdivision.		Township.			
Name.	Headquarters.	Name.	Headquarters.	Area in square miles.	Population.
1	2	3	4	5	6
Pakôkku ...	Pakôkku ...	Pakôkku ...	Pakôkku ...	403	86,501
		Yesagyô ...	Yesagyô ...	377	95,756
		Myaing ...	Myaing ...	780	73,909
Pauk ...	Pauk...	Pauk ...	Pauk ...	977	50,137
		Saw ...	Saw ...	1,011	22,468
		Seikpyu ...	Seikpyu ...	774	30,693
Gangaw ...	Gangaw ...	Gangaw ...	Gangaw ...	1,400	30,739
		Tilin ...	Tilin ...	488	14,052

ADMINISTRATIVE CHANGES.

Since the Census of 1901, 15 villages from the Seikpyu Township have been transferred to the Pakôkku Township. Four villages from the Myingyan District have also been transferred to the Pakôkku Township.

DISTRICT STAFF.

One Deputy Commissioner and District Judge, one Additional Judge, one Treasury Officer, Additional Judge and Headquarters Magistrate, one *Akunwun*, three Subdivisional Officers, eight Township Officers, one Superintendent of Land Records, two Deputy Conservators of Forests, one Assistant Conservator of Forests, one Superintendent of Excise, one Inspector of Post Offices, one Assistant Superintendent of Telegraphs, one District Superintendent of Police, one Assistant Superintendent of Police, one Executive Engineer, one Sub-Engineer, one Military Police Assistant Commandant, one Civil Surgeon, two Deputy Inspectors of Schools, seven Honorary Magistrates.

ESTABLISHMENTS.

District Office.—General Department,—four clerks, two peons, one punka-puller, one duftry, one court-house durwan, one sweeper; Revenue Department,—four clerks, one revenue record-keeper; Judicial Department—three clerks, one bailiff, one judicial record-keeper, one peon, one punka-puller, nine process servers; Treasury Department,—three accountants, one treasurer, one shroff, one peon, one punka-puller; Land Records Department,—one clerk, one record-keeper, one assistant record-keeper, nine inspectors, seventy-one surveyors, one survey teacher; Registration Department,—one registration clerk; Circuit-house,—one durwan, one sweeper; District Fund,—five bazaar *gaungs*, six sweepers, four conservancy cartmen, two coolies, one wood depôt durwan.

SUBDIVISIONAL, TOWNSHIP, ETC., ESTABLISHMENTS.

Name of office.	Clerks.	Peons and punka-pullers.	Sub-accountants.	Durwans and sweeper.
1	2	3	4	5
Headquarters Magistrate's Office, Pakòkku.	1	2
Senior Magistrate's Office, Pakòkku ..	1	2
Subdivisional Office, Pakòkku ...	2	3	...	1
Township Office, Pakòkku ...	2	2
Honorary Magistrate's Court, Pakòkku.	1	1
Township Office, Yesagyo ...	3	2	1	...
Township Office, Myaing ...	2	2
Subdivisional Office, Pauk ...	2	3	1	1
Township Office, Pauk ...	2	2
Township Office, Saw ...	2	2
Township Office, Seikpyu ...	2	2
Subdivisional Office, Gangaw ...	2	3	1	1
Township Office, Gangaw ...	2	2
Township Office, Tilin ...	2	2

Civil Police.—Five inspectors, twenty-three sub-inspectors, fifty head constables, 326 constables, two peons, two punka-pullers, one sweeper.

Military Police.—Six native officers, nineteen non-commissioned officers, 187 military policemen.

Excise.—One resident excise officer, one clerk.

Public Works.—Three overseers, one temporary upper subordinate, two sub-overseers, one accountant, three clerks (one temporary), three peons, two punka-pullers, two durwans.

Forests.—Ten clerks, five peons, two durwans, three punka-pullers, two sweepers.

Medical.—Seven sub-assistant surgeons, seven compounders, one peon, nine ward servants, nine sweepers, ten vaccinators, one clerk, one native superintendent of vaccination.

Education.—Two clerks, two peons.

Ecclesiastical.—One cemetery caretaker.

Veterinary.—Three veterinary assistants.

Rural Officials.—Eight hundred and seventy-one village headmen of whom 44 have special civil powers and 13 have special criminal powers.

Pakökkü Municipality.—Two clerks, two peons, one overseer, two *gaungs*, twenty cartmen, forty coolies, two water-cartmen, one night conservancy inspector, four head mehters, forty mehters, two bazaar *gaungs*, two bazaar peons, two bazaar sweepers, five bazaar durwans, one cattle-market *gaung*, one slaughter-house superintendent, one slaughter-house fee collector, one sweeper, one public works inspector.

POLICE STRENGTH AND DISTRIBUTION.

Township.	Station or Post.		Civil Police.				Military Police.				
	Situation.	Class.	Sub-Inspectors.	Head Constables.	Constables.	Total.	Subadars and Jemadars.	Havildars.	Naiks.	Sepoys.	Total.
1	2	3	4	5	6	7	8	9	10	11	12
Pakokku	Pakokku	P. S., M. P. ...	4	7	45	56	4	7			
	Headquarters lines and Depot.	5	2	75	82			3	98	118
	Yenangyat	P. S. ...	1	2	10	13					
	Kauhla	P. S. ...	1	2	10	13					
	Myitche	O. P. ...		1	5	6					
	Debya (Tabya)	O. P. ...		1	5	6					
Yesagyo	Magyigyaung	O. P. ...		1	4	5					
	Yesagyo	P. S. ...	1	3	15	19					
	Ma-u	O. P. ...		1	5	6					
Myaing	Pakanngò	P. S. ...	1	2	11	14					
	Myaing	P. S. ...	1	2	14	17					
	Myodwin	O. P. ...		1	5	6					
	Lingawdaw	O. P. ...		1	5	6					
Pauk	Bahin	P. S. ...	1	2	6	9					
	Pauk	P. S., M. P. ...	1	2	14	17	1	3	1	45	50
	Fynchaung	O. P. ...		1	5	6					
Saw	Sathein	O. P. ...		1	5	6					
	Saw	P. S. ...	1	2	11	14					
	Laungshe	O. P. ...		1	5	6					
Seikpyu	Pasòk	P. S. ...	1	2	6	9					
	Seikpyu	P. S. ...	1	2	12	15					
	Letsò	O. P. ...		1	5	6					
Gangaw	Nyaungnichaung	O. P. ...		1	5	6					
	Gangaw	P. S., M. P. ...	1	2	12	15	1	3	2	44	50
	Minywa	P. S. ...	1	2	6	9					
	Kyaw	O. P. ...		1	5	6					
Tilin	Kan	P. S. ...	1	2	8	11					
	Tilin	P. S. ...	1	2	12	15					
	Total		23	50	326	399	6	13	6	187	212

ABBREVIATIONS.

Police Station = (P.S.)

Outpost = (O.P.)

Military Police Post = (M.P.)

GENERAL INFORMATION CONCERNING PRINCIPAL TOWNS AND VILLAGES.

Town or village.	Population in 1911.	Number of houses.	Administrative status.	Police.	Post.	Telegraph.	Bazaars.	Forest.	Travellers' bungalow.	Hospital accommodation.	Principal Schools.
1	2	3	4	5	6	7	8	9	10	11	12
Pakókku ...	20,010	3,865	D. H., S. D. H., T. H., M.	P.S., M.P.	P.O.	T.O.	B.	F.R.	C.H., P.W.D.	54	W.M.S.
Yenangyat ...	1,002	168	V.	P.S.	P.O.	T.O.	P.W.D.	12	...
Kanhla ...	747	135	V.	P.S.	Dt.
Myitche ...	2,975	609	V.	O.P.	B.	...	P.W.D.
Dehya (Tabya) ...	884	74	V.	O.P.	Dt.
Kaing ...	903	163	V.
Kunywa ...	2,184	554	V.
Kywade ...	2,361	484	V.
Chaukkan ...	2,141	404	V.
Leya ...	1,607	325	V.
Kyat ...	1,686	351	V.
Sabè ...	1,922	401	V.
Seikkwa ...	2,203	436	T.H.	P.S.	P.O.	T.O.	B.	...	P.W.D.
Yesagyó ...	4,161	959	V.	O.P.	B.	...	Dt.
Ma-u ...	4,458	1,148	V.	P.S.	B.	...	P.W.D.
Pakanzò ...	1,270	363	V.	B.
Pakangyi ...	1,901	521	V.
Monnyin ...	1,522	336	V.
Taungu ...	2,082	478	V.
Ywange ...	1,633	373	V.
Sindè ...	1,930	447	T.H.	P.S.	P.O.	Dt.
Myaing ...	3,085	682	V.	O.P.
Myodwin ...	1,976	458	V.	O.P.	Dt.
Lingadaw ...	1,327	239	V.	O.P.	Dt.
Wagan ...	141	30	V.	Dt.
Paungwò ...	675	121	V.	P.S.	Dt.
Bahin ...	539	108	V.
Chauungsóngyi ...	3,332	579	V.
Letyetma ...	1,633	425	S.D.H., T.H.	P.S., M.P.	P.O.	T.O.	P.W.D.	12	...
Pauk ...	2,756	547	V.	O.P.	P.W.D.
Pyinchaung ...	1,449	204	V.	F.B.
Kabaing ...	610	169	V.	F.B.
Satheln ...	456	104	V.	O.P.	Dt.
Kyaukmasin ...	245	55	V.	Dt.
Kyaukka ...	794	132	V.	Dt.
Chaunggu ...	1,530	308	V.	Dt.
Thanbaya-aing ...	738	128	V.	Dt.
Kuga ...	433	88	V.	F.B.
Tazu ...	394	61	V.	P.W.D.
Yebyu ...	101	13	V.
Natha ...	1,540	271	V.	P.W.D.
Seikpyu ...	2,012	418	T.H.	P.S.	P.O.	T.O.	Dt.
Letse ...	591	119	V.	O.P.

(5)

GENERAL INFORMATION CONCERNING PRINCIPAL TOWNS AND VILLAGES—concluded.

Town or village.	Popula- tion in 1911.	Number of houses.	Administrative status.	Police.	Post.	Telegraph.	Bazaars.	Forest.	Travellers' bungalow.	Hospital accommodation.	Principal Schools.
1	2	3	4	5	6	7	8	9	10	11	12
Nyaungnichaung	297	73	V.	O.P.
Nyaungbin-Yedwin	165	32	V.
Ywathit	537	100	V.
Kusne	1,593	264	V.	Dt.
Saw	768	180	T.H.	P.W.D.
Laungshe	1,176	252	V.	P.S.	P.O.	P.W.D.
Pasök	398	87	V.	O.P.	...	T.O.
Kyaukswä	317	53	V.	P.S.	P.W.D.
Thónlanbyi (Leby)	237	41	V.	Dt.
Kyakat	403	86	V.	P.W.D.
Kachaung	239	47	V.	P.W.D.
Man	241	46	V.	P.W.D.
Kyi	639	118	V.	Dt.
Kyaukleik	211	37	V.	Dt.
Tabyin	341	70	V.	F.B.
Peinnè	378	69	V.	F.B.
Gangaw	1,575	299	S.D.H., T.H.	P.S., M.P.	F.B.
Minywa	1,746	316	V.	...	P.O.	T.O.	F.B.
Kyaw	1,384	220	V.	P.S.	P.W.D.
Kan	1,202	233	V.	O.P.	P.W.D.	15	...
Zibya	95	23	V.	P.S.	Dt.
Tawma	557	88	V.	P.W.D.
Legyi	253	45	V.	Dt.
Tazan	113	24	V.	Dt.
Yebök	108	25	V.	Dt.
Mozo	163	47	V.	Dt.
Mawle	152	24	V.	Dt.
Myinza	308	54	V.	Dt.
Shónshi	1,529	346	V.	P.W.D.
Nyaunglò	162	29	V.	P.W.D.
Kanthet	189	31	V.
Lèma	124	15	V.	F.B.
Kunzò	302	46	V.	F.B.
Chaungzón	84	15	V.	F.B.
Chaing (Kyaing)	56	10	V.	F.B.
Tilin	857	160	T.H.	P.S.	F.B.
Kyin	476	72	V.	...	P.O.	F.B.
Anyaban (Ban)	276	45	V.	P.W.D.
Aung	186	37	V.	P.W.D.
Shwegóndaing	149	25	V.	P.W.D.

(9)

District Headquarters = (D.H.)
 Subdivisional Headquarters = (S.D.H.)
 Township Headquarters = (T.H.)
 Municipality = (M.)
 Village-Tract = (V.)

ABBREVIATIONS.
 Post Office = (P.O.)
 Telegraph Office = (T.O.)
 Bazaar = (B.)
 Forest Revenue Station = (F.R.)
 District Bungalow = (Dt.)

Public Works Dept. Bungalow = (P.W.D.)
 Forest Bungalow = (F.B.)
 Circuit-House = (C.H.)
 Wesleyan Mission School = (W.M.S.)

FERRIES, PAKÔKKU DISTRICT.

Ferry.	River crossed.	Township.	Ferry.	River crossed.	Township.
1	2	3	1	2	3
Pakôkku ...	Irrawaddy	Pakôkku.	Yelè ...	Chindwin...	Yesagyo.
Ywabè ...			Saw ...	Saw ...	Saw.
Kyawzi ...			Mawlè ...	Chindwin ..	} Gangaw.
Padawbyin ...	Mawlè ...	Maw ...			
Chinya ...	Minywa ...	Myittha ...			
Pakanngè ...	Chindwin	Yesagyo.	Pya ...	Myittha ...	
Tandaw ...			Kan ...	Myittha ...	
Naung-u ...					
Gwedaung ...					

LEASED FISHERIES, PAKÔKKU DISTRICT.

Township.	Fishery.	Particulars of subsequent amalgamations.	Township.	Fishery.	Particulars of subsequent amalgamations.
1	2	3	1	2	3
Pakôkku ...	Se-U. Be. Hlegyaung-bauk. Gyagyun. Luthe. Aukdaung. Wuttagan. Bwet-kôn Buddha-gôn	... } These two ... } amalgamated in this year.	Yesagyo ...	Nwèni. Mibya-Daunggyi. Bondawbyi. Sithe. Ma-u-alè. Sincheya. Singyo.	
	Myingyungyo. Seikkwa-Myittaung. Thinbawdin. Myitche-Yewinyo. Lanywa.			Maukkalan. Nanwingaing. Alethaung-Daunggyi. Thamanlabo. Ngamyay-Inyo. Waya. Kwedaung. Lewabauk (south). Ngamyay-Inthit.	
	Sitpindaung. Taungbon-Myityo. Nga-ku. Shwepauk-pin. Paukin. Kunywa. Tingat.			Talagywa. Lewabauk.	
			Seikpyu ...	Hnawthaung. Kyibindaung.	

MAIN ROADS, PAKÔKKU DISTRICT.

Name of road.	Length in miles.	From what funds maintained.	Name of road.	Length in miles.	From what funds maintained.	
1	2	3	1	2	3	
Pakangyi to Pakanngè ...	41	} Provincial Funds.	Mindat to Hilong ...	14	} Provincial Funds.	
Pakôkku to Pauk ...	46		Pakôkku to Myaing <i>via</i> Kaing ...	27		
Pauk to Tilin ...	50		Pauk to Yawôwin ...	38		
Tilin to Gangaw ...	47		Pakôkku to Yesagyo ...	26		
Gangaw to Kan ...	28		Pakôkku to Myaing <i>via</i> Kin ...	26		
Saw to Ywathit (Saw-Zigat road)	41		} Cess Funds.	Pakôkku to Myitche ...		21
Ywathit to Seikpyu ...	30			Gangaw to Kyaw and Kanthit		43
From Yeshin Camp to Kan (Haka-Kan road).	11			bridle-path.		} Forest Department Funds.
Saw to Kyetchedaung mule track	19			Gangaw to Myintha bridle-path		
Yeshin to Mindat ...	9			<i>via</i> Kunzè.		
Mindat-Sakan to Kanpetlet mule track.	32					

DISTRICT POPULATION ARRANGED BY RACE AND LANGUAGE.

Tribe or Race.		Number of persons.	Language.		Number of speakers.
1	2	3	1	2	3
<i>Indigenous Tribes and Races—</i>			<i>Indian Vernaculars—</i>		
Burmese	393,320	Burmese	393,653
Chin	14,148	Chin	13,728
Shan	160	Shan	2
Karen	2	Karen	2
			Others	4
<i>Hindu Castes—</i>			<i>Other Indian Vernaculars</i>		
Brahman	126	Tamil	138
Chatri	63	Telugu	133
Chetty	28	Oriya	30
Kapu	25	Bengali	258
Mala	3	Hindi	1,112
Others	420			276
<i>Musalman Tribes—</i>					
Shaik	176			
Zerbadi	135			
Others	583			
Chinese	505	Chinese	448
European	82	European	106
Anglo-Indian	24			
Others	109	Others	19
Total	409,909	Total	409,909

IMMIGRATION AND EMIGRATION.

The following statement shows the Immigration into, and Emigration from, the Pakôkku District. The figures for the three districts contributing most largely to the Immigration (Myingyan, Minbu and Lower

Chindwin) and for three districts affording the main outlets for Emigration (Pyapôn, Henzada and Myaungmya) have been separately given. Emigration to countries beyond Burma is not shown.

		Place of Enumeration.				
		Pakôkku.	Emigration to			
1	2		4	5	6	7
	Pakôkku	403,516	5,552	4,000	3,843	22,285
IMMIGRATION FROM	Myingyan ...	2,183	Total Emigration 35,630.			
	Minbu ...	471				
	Lower Chindwin ...	441				
	Rest of Burma ...	1,389				
	India ...	1,677				
	Other Asiatic countries ...	224				
	Beyond Asia ...	53	Total Immigration 6,393.			

This statement has been prepared from Imperial Table XI of the Census Report for 1911 on the following basis:—

Immigrants are persons who were born outside the district of enumeration.

Emigrants are persons enumerated in a district other than that in which they were born.

LITERACY.

Age.		Persons.	Males.	Females.	District literacy per 10,000 population.	Provincial literacy per 10,000 population.
1	2	3	4	5	6	7
LITERATE IN ENGLISH	0—10	13	8	5	1	8
	10—15	51	48	3	11	47
	15—20	75	70	5	20	88
	20 and over	804	665	39	14	77
LITERATE ...	0—10	1,254	832	372	111	195
	10—15	6,767	5,506	1,261	1,435	1,839
	15—20	9,777	7,981	1,796	2,613	2,902
	20 and over	65,515	69,710	5,805	3,090	3,187
ILLITERATE	0—10	112,067	54,852	57,215
	10—15	40,399	18,628	21,771
	15—20	27,636	9,457	18,179
	20 and over	146,494	29,143	107,351
DISTRICT POPULATION	0—10	113,321	55,734	57,587
	10—15	47,166	24,134	23,032
	15—20	37,413	17,438	19,975
	20 and over	212,009	98,853	113,156

Note.—The standard of literacy adopted is the capacity to understand and reply to a letter concerning familiar topics.

RATES OF WAGES.

The average monthly wages for 1910-11 were as follows:—

(a) An able-bodied agricultural labourer, Rs. 15.

(b) A cooly, Rs. 10.

(c) A carpenter, Rs. 25.

(d) A blacksmith, Rs. 20.

The average hire of a cart is Re. 1 per day.

PART II.—STATISTICAL TABLES.

TABLE I.—TEMPERATURE AND RAINFALL, PAKOKKU DISTRICT, PAKOKKU TOWN.

Year.	Average maximum Temperature during			Average minimum Temperature during			Rainfall in inches.																
	April.	July.	December.	April.	July.	December.	January.	February.	March.	April.	May.	June.	July.	August.	September.	October.	November.	December.					
1	2	3	4	5	6	7	8	9	10	11	12	13	14	15	16	17	18	19					
1901	...	} Figures not available.	}	}	}	}	...	'45	'33	'07	1'86	2'31	2'55	1'60	4'03	3'18	'28	'05					
1902	'20	'88	3'05	1'40	4'26	4'36	2'05		
1903	1'50	3'12	'70	1'42	4'06	4'79	1'05	...	
1904
1905
1906	...	} Figures not available.																			
1907	'2	'2	'46	8'15	6'86	5'34	2'31	2'88	4'54	1'63	'21					
1908	'29	3'77	'51	'44	2'74	2'58	11'54	4'32	2'14	...					
1909					
1910					
1911					
1912					
1913					
1914					
1915					
1916					
1917					
1918					
1919					
1920					
1921					

TABLE II.—DISTRIBUTION OF POPULATION.

Township or Town.	Area in square miles.	Number of			Population.			Persons per square mile.
		Towns.	Village-Tracts.	Houses.	Persons.	Males.	Females.	
1	2	3	4	5	6	7	8	9
Pakòkku	403	I	92	17,438	86,501	41,180	45,321	215
Pakòkku Town	4	I	...	3,865	20,010	9,658	10,352	5,003
Rural area	399	...	92	13,573	66,491	31,522	34,969	167
Yesagyò	377	...	165	22,165	95,756	44,424	51,332	254
Myaing	780	...	163	16,661	78,969	36,460	42,509	101
Pauk	977	...	111	9,094	50,137	24,917	25,220	51
Saw	1,011	...	95	4,645	22,462	11,588	10,874	22
Seikpyu	774	...	80	6,223	30,693	14,708	15,985	40
Gangaw	1,400	...	98	5,817	30,739	15,418	15,321	22
Tilin	488	...	64	2,653	14,652	7,464	7,188	30

TABLE III.—VITAL STATISTICS, PAKOKKU DISTRICT.

Year.	Population of district.	Total number of births registered.	Ratio of births per thousand.	Total number of deaths registered.	Ratio of deaths per thousand.	Percentage of deaths under five years to total deaths.	Deaths per 1,000 from					
							Small-pox.	Fever.	Bowel complaints.	Injuries.	All other causes.	
1	2	3	4	5	6	7	8	9	10	11	12	
1901	...	300,238	*922	*47'39								
1902	...	304,741	*783	*39'65								
1903	...	309,311	*889	*44'35	4,215	13'83	32'60	'04	4'74	'35	'44	8'26
1904	...	313,950	*819	*40'26	5,927	19'16	31'97	'05	5'71	2'89	'28	10'23
1905	...	300,238	*868	*44'61	4,954	15'78	35'00	Nil.	5'83	'37	'26	9'32
					6,397	21'30	33'06	'04	6'21	'64	'33	14'08
1906	...	300,238	*684	*35'16								
1907	...	300,238	9,355	31'16	6,396	21'30	33'03	'64	7'57	'67	'44	11'08
1908	...	300,238	10,727	35'73	7,702	25'65	37'31	2'15	8'36	'56	'45	14'14
1909	...	300,433	11,663	38'82	7,313	24'36	37'86	1'06	8'60	'83	'33	13'53
1910	...	300,433	12,325	41'02	10,929	36'38	37'72	'03	12'84	1'58	'32	21'60
					10,527	35'04	44'26	'01	14'11	2'00	'46	18'46
1911	...	409,909	15,025	36'65								
1912	...				11,031	26'91	39'64	'05	9'99	1'21	'51	15'16
1913	...											
1914	...											
1915	...											
1916	...											
1917	...											
1918	...											
1919	...											
1920	...											

* Pakokku Town only.

TABLE IV.—AGRICULTURAL STATISTICS, PAKŌKKU DISTRICT.

Year.	Area in Acres.		Of Area cultivated.		Area under principal Crops.				Agricultural Stock.	
	Total.	Cultivated.	Irrigated.	Non-irrigated.	Rice.	Sesamum.	Jowar.	Tobacco.	Cattle.	Buffaloes.
1	2	3	4	5	6	7	8	9	10	11
1901-02	3,974,147	411,450	14,148	397,302	98,432	30,398	210,896	7,901	272,012	47,516
1902-03	3,974,147	410,533	14,505	396,028	97,705	30,685	201,520	7,196	275,198	33,637
1903-04	3,974,147	422,226	14,392	407,834	100,166	32,556	203,862	4,906	273,527	33,611
1904-05	3,974,793	434,663	14,591	420,072	102,620	32,541	202,976	5,496	276,860	35,203
1905-06	3,974,793	434,201	14,127	420,074	101,551	32,458	203,345	5,530	231,572	35,909
1906-07	3,974,793	435,792	13,367	421,425	101,425	33,431	202,557	5,444	229,626	35,497
1907-08	3,974,473	460,913	12,832	448,081	99,770	27,619	201,770	4,875	224,082	34,452
1908-09	3,974,473	676,920	54,226	622,694	85,635	122,009	322,300	2,530	236,355	35,382
1909-10	3,976,117	818,922	51,726	767,196	85,635	123,000	172,300	15,000	225,958	29,042
1910-11
1911-12
1912-13
1913-14
1914-15
1915-16
1916-17
1917-18
1918-19
1919-20
1920-21

TABLE V.—OUTTURN OF CROPS, PAKÔKKU DISTRICT.
 [Outturn in American Notation, taking 100 to represent a Normal Crop.]

Year.	Rice.	Sesamum.	Jewar.	Maize.	Gram.	Pegyi and other pulses.	Tobacco.
1	2	3	4	5	6	7	8
1901-02 ...	77	76	67	87	168	101	38
1902-03 ...	41	112	141	...	188
1903-04 ...	44	113	309	68	225	222	68
1904-05 ...	108	103	148	147	93	150	67
1905-06 ...	99	102	100	93	116	130	89
1906-07 ...	75	56	50	75	62	62	62
1907-08 ...	77	63	56	41	65	87	78
1908-09 ...	103	88	99	72	85	95	78
1909-10 ...	100	100	18	93	93	97	91
1910-11 ...							
1911-12 ...							
1912-13 ...							
1913-14 ...							
1914-15 ...							
1915-16 ...							
1916-17 ...							
1917-18 ...							
1918-19 ...							
1919-20 ...							
1920-21 ...							

TABLE VI.—LOANS, PAKÖKKU DISTRICT.

Year.	Land Improvement Loans Act.				Agriculturists' Loans Act.			
	Advances.	Remissions.	Collections.	Out-standings.	Advances.	Remissions.	Collections.	Out-standings.
1	2	3	4	5	6	7	8	9
	Rs.	Rs.	Rs.	Rs.	Rs.	Rs.	Rs.	Rs.
1901-02	7,300	...	7,368	6,000
1902-03	8,600	...	6,725	7,875
1903-04	20,000	...	11,920	15,955
1904-05	22,300	...	20,253	18,003*
1905-06	10,000	...	13,378	14,625
1906-07	32,000	...	18,245	28,385*
1907-08	64,055	...	33,569	58,871
1908-09	85,180	...	96,480	47,571
1909-10 ...	200	...	70	130	45,910	...	51,938	41,544*
1910-11	65	65	56,045	17	49,407	48,165
1911-12 ...								
1912-13 ...								
1913-14 ...								
1914-15 ...								
1915-16 ...								
1916-17 ...								
1917-18 ...								
1918-19 ...								
1919-20 ...								
1920-21 ...								

* Revised figures.

TABLE VIII.—FOREST STATISTICS, PAKÓKKU DISTRICT.

Year.	Area in square miles of reserved forests.	Area in square miles of unreserved forests*.	Forest revenue.	Forest expenditure.
1	2	3	4	5
			Rs.	Rs.
1901-02	1,266	2,634	1,47,115	74,548
1902-03	1,263	2,636	1,59,928	71,544
1903-04	1,204	2,605	1,21,608	65,786
1904-05	939	2,960	1,70,672	77,261
1905-06	939	2,960	1,75,847	99,103
1906-07	939	2,960	1,97,982	62,595
1907-08	877	2,953	96,234	70,768
1908-09	850	2,980	2,40,039	86,992
1909-10	†1,016	2,865	3,05,546	99,614
1910-11				
1911-12				
1912-13				
1913-14				
1914-15				
1915-16				
1916-17				
1917-18				
1918-19				
1919-20				
1920-21				

* Includes Pakókku Hill Tracts.

† Includes 51 square miles in the Lower Chindwin District.

TABLE IX.—QUANTITY AND VALUE OF MINERALS PRODUCED,
PAKOKKU DISTRICT.

Year.	Petroleum.		Salt.		Sand stone.	
	Amount.	Value.	Amount.	Value.	Amount.	Value.
1	2	3	4	5	6	7
	Gallons.	Rs.	Mds.	Rs.	Tons.	Rs.
1901	11,843,341	7,39,194	734	3,137	489	3,080
1902	13,824,390	6,99,272	541	2,997	326	2,000
1903	22,665,518	15,08,965	490	1,921	163	1,000
1904	18,660,485	11,90,564	459	1,247	2,972	6,572
1905	18,759,818	15,61,176	588	1,470	5,723	20,827
1906	13,172,136	10,96,174	555	1,387	2,665	12,033
1907	8,407,825	6,53,046	535	1,337	1,966	12,205
1908	6,472,545	50,306	534	1,335	8,853	10,721
1909	6,119,934	3,46,523	526	1,315	2,864	9,428
1910	4,942,308	2,80,729	969	2,422	6,655	8,706
1911	...					
1912	...					
1913	...					
1914	...					
1915	...					
1916	...					
1917	...					
1918	...					
1919	...					
1920	...					
1921	...					

TABLE XI.—ROAD STATISTICS, PAKOKKU DISTRICT.

Year.	Total mileage of roads (metalled).	Total mileage of roads (unmetalled).	Annual expenditure from Provincial Funds on		Annual expenditure from Local Funds on		Total expenditure.
			Original works.	Repairs.	Original works.	Repairs.	
1	2	3	4	5	6	7	8
			Rs.	Rs.	Rs.	Rs.	Rs.
1901-02	1,63,773	40,668	} Figures not available.		
1902-03	13,252	51,405			
1903-04	1,45,370	45,015			
1904-05	364	97,312	42,132			
1905-06	482	64,742	62,236			
1906-07	482	67,828	66,618	3,107	15,735	1,53,288
1907-08 ...	1	481	57,586	1,17,245	3,970	21,732	2,00,533
1908-09 ...	1	427	52,551	84,899	8,451	18,746	1,61,647
1909-10 ...	1	40770	28,187	87,064	17,482	9,794	1,42,527
1910-11 ...	1	40770	1,717	1,04,259	24,049	4,784	1,34,809
1911-12 ..							
1912-13 ...							
1913-14 ...							
1914-15 ...							
1915-16 ...							
1916-17 ...							
1917-18 ...							
1918-19 ...							
1919-20 ...							
1920-21 ...							

TABLE XII.—STATISTICS OF REVENUE, PAKÖKKU DISTRICT.

Year.	Land Revenue.				Stamps.	Income-tax.	Excise.	Salt.	Other sources.	Total.
	Ordinary revenue.	Thathamada.	Fisheries.	Miscellaneous.						
1	2	3	4	5	6	7	8	9	10	11
	Rs.	Rs.	Rs.	Rs.	Rs.	Rs.	Rs.	Rs.	Rs.	Rs.
1901-02	2,35,413	6,98,845	10,566	2,10,394	31,600	...	30,840	385	655	12,18,698
1902-03	1,13,334	6,57,264	9,768	2,29,612	30,646	...	29,211	355	1,079	10,71,269
1903-04	1,28,949	7,23,698	10,835	2,99,276	31,614	...	29,281	290	879	12,24,772
1904-05	1,36,452	7,77,676	10,182	2,68,177	35,034	...	30,579	300	966	12,60,006
1905-06	1,22,726	7,88,470	10,662	2,12,556	43,600	...	25,216	395	1,166	12,04,791
1906-07	1,24,431	7,78,507	10,486	1,63,904	41,374	...	27,201	375	1,573	11,47,941
1907-08	1,30,771	6,12,247	10,968	1,05,183	46,103	...	21,686	305	1,701	9,28,964
1908-09	1,62,196	7,63,899	10,155	1,05,066	44,471	...	22,509	365	1,489	11,10,150
1909-10	1,67,021	7,80,447	9,634	89,093	40,054	...	24,197	410	941	11,11,797
1910-11
1911-12
1912-13
1913-14
1914-15
1915-16
1916-17
1917-18
1918-19
1919-20
1920-21

TABLE XIII.—LAND REVENUE, PAKOKKU DISTRICT.

Year.	Lana Revenue proper.				Thatameda.			Fishery Revenue.				Miscellaneous Land Revenue.				Total land revenue collections.	
	Area assessed in acres.	Demand.	Remissions.	Collections.	Number of households assessed.	Demand.	Remissions.	Collections.	Demand.		Remissions.	Collections.	Receipts under Village Regulations.	Survey fees for <i>pottas</i> .	Royalties and fees on minerals.		Other sources.
									From net licenses.	From leased fisheries.							
1	2	3	4	5	6	7	8	9	10	11	12	13	14	15	16	17	18
1901-02 ...	76,403	Rs. 2,56,329	Rs. 1,340	Rs. 2,35,113	73,930	Rs. 7,31,165	Rs. 82,040	Rs. 6,98,845	1,223	10,308	862	10,566	Rs. 5,569	...	Rs. 2,03,510	Rs. 1,315	Rs. 11,55,218
1902-03 ...	50,796	1,15,674	53	1,13,384	75,100	7,46,080	88,816	6,57,264	1,729	8,079	...	9,768	5,029	...	2,23,947	636	10,09,978
1903-04 ...	55,231	1,38,949	...	1,28,949	76,068	7,28,750	5,052	7,23,698	1,686	9,559	...	10,835	4,712	...	2,93,863	651	11,63,708
1904-05 ...	41,474	1,36,516	61	1,36,452	78,723	7,83,520	4,844	7,77,676	1,643	8,974	...	10,182	3,881	...	2,63,934	363	11,93,127
1905-06 ...	38,090	1,26,506	27	1,22,726	79,759	7,95,095	5,871	7,88,470	1,799	9,088	225	10,663	4,704	...	2,06,352	1,500	11,84,414
1906-07 ...	36,152	1,25,027	431	1,24,431	80,439	7,97,752	13,657	7,78,507	2,157	8,329	...	10,486	3,701	...	1,53,493	1,800	10,77,418
1907-08 ...	36,643	1,30,963	110	1,30,771	78,617	6,19,020	6,773	6,12,247	1,930	10,713	1,400	10,963	5,198	...	98,621	1,364	8,59,169
1908-09 ...	46,211	1,62,255	6	1,62,196	77,122	7,68,219	4,207	7,63,899	1,730	8,445	20	10,155	5,397	...	98,616	1,053	10,41,316
1909-10 ...	47,022	1,68,908	1,871	1,67,031	79,678	7,84,181	3,734	7,80,447	1,956	7,678	...	9,634	4,948	...	82,988	1,157	10,46,195
1910-11 ...																	
1911-12 ...																	
1912-13 ..																	
1913-14 ...																	
1914-15 ...																	
1915-16 ...																	
1916-17 ...																	
1917-18 ...																	
1918-19 ...																	
1919-20 ...																	
1920-21 ...																	

TABLE XIV.—STAMP, INCOME-TAX AND EXCISE REVENUE, PAKOKKU DISTRICT.

Year.	Stamp Revenue.			Income-tax.			Excise Revenue.			
	Judicial stamps.	Non-Judicial stamps.	Fines and penalties, etc.	Number of assesses.	Demand.	Collections.	Liquor.		Opium.	
							Excise duty.	License fees.	License fees.	Sale of opium.
1	2	3	4	5	6	7	8	9	10	11
	Rs.	Rs.	Rs.		Rs.	Rs.	Rs.	Rs.	Rs.	Rs.
1901-02 ...	21,498	9,657	445	2,910	12,985	7,050	7,895
1902-03 ...	20,452	9,546	648	600	12,620	8,198	7,793
1903-04 ...	19,486	11,133	995	150	12,800	5,938	10,393
1904-05 ...	23,019	11,062	953	450	13,263	1,000	15,866
1905-06 ...	23,455	19,571	574	150	12,690	1,013	11,363
1906-07 ...	27,990	12,876	508	525	11,800	1,016	13,860
1907-08 ...	33,997	11,894	212	490	10,021	515	10,660
1908-09 ...	34,357	9,578	536	350	12,647	217	9,295
1909-10 ...	30,604	9,228	222	140	9,880	527	13,650
1910-11
1911-12
1912-13
1913-14
1914-15
1915-16
1916-17
1917-18
1918-19
1919-20
1920-21

TABLE XV.—INCOME AND EXPENDITURE, DISTRICT FUND, PAKÔKKU DISTRICT.

Year.	Income.								Expenditure.						
	Provincial rates.	Slaughter-house licenses.	Cattle-pounds and fines.	Sale proceeds of unclaimed cattle.	Bazaar rents and bazaar stall rents.	Lease of tolls and ferries.	Other sources of income.	Total.	District Post charge.	Education.	Medical.	Conservancy.	Civil Works.	Other heads of expenditure.	Total.
1	2	3	4	5	6	7	8	9	10	11	12	13	14	15	16
	Rs.	Rs.	Rs.	Rs.	Rs.	Rs.	Rs.	Rs.	Rs.	Rs.	Rs.	Rs.	Rs.	Rs.	Rs.
1901-02	880	204	1,165	4,991	7,854	928	15,522	1,068	6,135	1,056	8,259
1902-03	1,060	470	554	6,421	7,231	...	15,736	1,113	11,085	1,594	13,792
1903-04	1,112	525	223	5,886	7,205	288	15,279	1,008	10,184	2,070	13,272
1904-05	1,092	544	318	5,894	8,167	436	16,371	1,128	13,289	2,170	16,567
1905-06	1,302	618	545	5,488	6,547	57	14,557	1,105	22,098	1,826	25,069
1906-07	4,164	649	642	5,745	8,523	10,005	20,727	1,068	20,618	1,912	23,598
1907-08	8,190	1,177	701	5,520	8,207	20,009	38,984	1,068	27,713	1,830	30,641
1908-09	3,720	1,153	495	5,558	10,526	15,161	31,624	1,113	31,843	2,855	35,616
1909-10	4,345	1,306	369	4,995	8,096	17,791	36,962	1,097	31,919	2,267	32,283
1910-11	4,850	1,300	911	5,968	9,035	2,018	24,172	1,068	22,763	1,789	22,620
1911-12 ...															
1912-13 ...															
1913-14 ...															
1914-15 ...															
1915-16 ...															
1916-17 ...															
1917-18 ...															
1918-19 ...															
1919-20 ...															
1920-21 ...															

TABLE XVII.—CRIME, PAKOKKU DISTRICT.

Year.	Persons convicted or bound over in respect of											
	Rioting and unlawful assembly.	Offences affecting life.	Grievous hurt.	Cattle theft.	Robbery and dacoity.	Housebreaking and theft.	Coinage offences.	Bad livelihood.	Offences under the			
									Opium Act.	Excise Act.	Forest Law.	
1	2	3	4	5	6	7	8	9	10	11	12	
1901	...	7	3	53	26	12	74	...	11	19	68	...
1902	5	46	46	13	118	...	57	10	85	...
1903	...	20	6	34	46	42	131	...	95	11	102	...
1904	1	20	25	13	123	...	38	46	114	2
1905	...	14	2	21	25	5	127	2	20	19	121	8
												48
1906	8	37	53	9	123	...	30	26	193	33
1907	5	15	83	13	139	...	46	17	231	24
1908	8	15	81	11	154	2	90	24	190	19
1909	...	6	5	23	30	6	107	...	35	13	141	19
1910	8	15	30	3	103	...	17	19	130	60
1911	...											
1912	...											
1913	...											
1914	...											
1915	...											
1916	...											
1917	...											
1918	...											
1919	...											
1920	...											
1921	...											

TABLE XVIII.—CRIMINAL JUSTICE, PAKOKKU DISTRICT.

Year.	Cognizable offences.						Non-cognizable offences.			
	Cases reported.	Cases investigated under section 189 of Code of Criminal Procedure.	Cases sent up for trial.	Persons tried.	Persons acquitted or discharged.	Persons convicted.	Total cases for disposal.	Cases dismissed without trial.	Cases ending in discharge or acquittal.	Cases ending in conviction.
1	2	3	4	5	6	7	8	9	10	11
1901	1,252	3	534	850	263	587	543	21	207	315
1902	1,442	6	724	1,065	347	718	642	19	197	426
1903	1,444	3	778	1,225	362	863	698	16	199	483
1904	1,448	...	852	1,295	399	896	757	15	246	496
1905	1,391	...	709	1,557	481	1,076	783	25	275	483
1906	1,389	...	674	1,709	505	1,204	684	16	311	357
1907	1,646	...	891	1,772	548	1,224	707	28	252	427
1908	1,644	...	869	1,924	563	1,361	716	22	263	431
1909	1,097	...	635	1,397	521	876	756	10	293	453
1910	1,052	...	562	1,127	342	785	783	29	380	374
1911										
1912										
1913										
1914										
1915										
1916										
1917										
1918										
1919										
1920										
1921										

(25)

TABLE XIX.—CIVIL JUSTICE, PAKOKKU DISTRICT.

Year.	Civil Suits in Courts of						
	District Judge.		Subdivisional Judges.		Township Judges.		
	Number of suits instituted	Average value.	Number of suits instituted	Average value.	Number of suits instituted	Average value.	
1	2	3	4	5	6	7	
		Rs.		Rs.		Rs.	
1901	...	1	3,100	34	583	1,129	66
1902	...	1	542	61	435	1,100	70
1903	...	2	722	36	613	1,162	66
1904	...	4	865	47	431	1,284	65
1905	...	2	1,685	58	428	1,330	71
1906	71	361	1,706	81
1907	...	1	4,139	70	633	1,917	71
1908	...	2	4,638	110	776	1,977	67
1909	...	4	2,270	70	525	1,761	72
1910	...	4	7,552	77	625	1,636	71
1911	...						
1912	...						
1913	...						
1914	...						
1915	...						
1916	...						
1917	...						
1918	...						
1919	...						
1920	...						
1921	...						

TABLE XXIII.—VACCINATION, PAKÓKKU DISTRICT.

Year.	Number of operations.	Persons treated.		Cost of operations during the year.	
		Successfully.	Unsuccessfully.		
1	2	3	4	5	
				Rs.	
1901-02	...	4,605	3,436	1,169	772
1902-03	...	5,290	3,924	1,366	745
1903-04	...	8,808	7,602	1,206	1,515
1904-05	...	8,538	5,894	2,644	2,108
1905-06	...	9,337	8,076	838	2,304
1906-07	...	7,713	6,987	412	2,457
1907-08	...	15,458	12,191	1,172	3,383
1908-09	...	15,353	13,969	869	4,466
1909-10	...	20,700	19,529	583	5,121
1910-11	...				
1911-12	...				
1912-13	...				
1913-14	...				
1914-15	...				
1915-16	...				
1916-17	...				
1917-18	...				
1918-19	...				
1919-20	...				
1920-21	...				

TABLE XXIV.—EDUCATIONAL STATISTICS, PAKOKKU DISTRICT.

Year.	High Schools.			Middle Schools.			Upper Primary Schools.			Lower Primary Schools.			Technical training and other schools, public and private.			Expenditure on Education from.						
	Schools.	Average daily attendance of scholars.		Schools.	Average daily attendance of scholars.		Schools.	Average daily attendance of scholars.		Schools.	Average daily attendance of scholars.		Schools.	Average daily attendance of scholars.		Provincial Funds.	District Cess Funds.	Municipal Funds.	Fees.	Other sources.	Total expenditure.	
		Male.	Female.		Male.	Female.		Male.	Female.		Male.	Female.		Male.	Female.							
	1	2	3	4	5	6	7	8	9	10	11	12	13	14	15	16	17	18	19	20	21	22
1901-02	8	354	140	21	561	113	85	1,268	234	714	10,415	100	9,735	...	1,200	1,898	518	13,281
1903-03	6	406	106	27	567	262	79	1,318	348	742	10,347	85	11,606	...	600	2,056	415	14,677
1903-04	8	453	81	26	636	338	100	1,714	237	737	8,264	55	20,966	...	600	2,232	259	24,057
1904-05	15	790	123	56	1,507	92	71	1,369	131	740	8,137	78	11,963	...	600	...	418	12,971
1905-06	18	840	163	60	1,560	79	67	1,331	117	743	7,965	42	14,517	...	600	...	716	15,833
1906-07	20	905	363	62	1,533	58	79	1,500	271	746	8,539	...	16,512	...	606	...	584	17,699
1907-08	30	1,116	323	72	1,869	116	64	1,554	257	862	9,349	71	17,680	...	600	342	477	19,049
1908-09	36	1,272	329	74	1,856	132	63	1,000	223	758	9,668	41	19,678	...	600	...	532	20,810
1909-10	41	1,530	244	86	1,966	233	53	924	95	781	8,004	36	18,083	...	600	334	532	19,595
1910-11	41	1,308	424	88	2,063	307	38	671	170	816	9,116	36	18,179	...	600	535	823	20,142
1911-13
1912-13
1913-14
1914-15
1915-16
1916-17
1917-18
1918-19
1919-20
1920-21

PART III.—TOWN AND VILLAGE CENSUS TABLES.

PAKOKKU TOWNSHIP.—Population of Towns and Village-tracts by Sex and by Religion.

Serial No.	Town or Village-tract.	Number of houses.	Total population.			Buddhists.		Animists.		Hindus.		Mahomedans.		Christians.		Others.	
			Male.	Female.	Total.	Male.	Female.	Male.	Female.	Male.	Female.	Male.	Female.	Male.	Female.	Male.	Female.
			4	5	6	7	8	9	10	11	12	13	14	15	16	17	18
1	Township ...	17,138	41,180	45,321	86,501	39,530	44,841	181	38	743	128	568	201	138	100	20	13
	Pakokku Town ...	3,865	9,658	10,359	20,010	8,803	9,977	155	29	295	78	294	179	91	83	20	13
2	Thabyettaw ...	29	83	77	160	83	77
3	Nwada ...	63	118	164	282	118	164
4	Magyibinbu ...	137	302	370	672	302	370
5	Shweda ...	57	143	140	283	143	140
6	Natkyun ...	164	402	415	817	402	415
7	Kyunpulu ...	170	489	468	957	489	468
8	Kunywa ...	554	918	1,266	2,184	918	1,266
9	Paunglaunggan ...	106	135	279	414	135	279
10	Hnawgon ...	133	386	353	639	386	353	40	15	9	1	4	4
11	Kywede ...	434	1,097	1,264	2,361	1,044	1,244
12	Chaukkan ...	404	1,046	1,095	2,141	1,046	1,095
13	Kaing ...	163	417	486	903	417	486
14	Magyikobin ...	66	163	131	344	163	181
15	Pongan ...	49	108	154	262	108	154
16	Mithwegan ...	122	253	337	590	253	337
17	Myaukinkan ...	114	183	259	443	183	259
18	Kyiywa ...	156	212	278	490	212	278
19	Padaingchon ...	158	259	405	664	259	405
20	Myingyaing ...	28	58	47	105	58	47
21	Bokdagon ...	19	41	45	86	41	45
22	Pakokku Kyunzu ...	20	40	40	80	40	40
23	Kokkohla ...	315	668	707	1,375	668	707
24	Ywathit ...	98	193	220	418	193	220
25	Myingyun ...	318	489	511	983	469	514
26	Kyun-u ...	196	347	430	777	347	430
27	Leya ...	325	783	834	1,607	783	834
28	Kyunnyogyi ...	98	210	250	460	210	250
29	Kanha ...	135	344	403	747	344	403
30	Nyaungbinhla ...	197	484	633	1,307	484	633
31	Ku ...	546	615	633	1,248	615	633

PAKOKKU TOWNSHIP.—Population of Towns and Village-tracts by Sex and by Religion—concluded.

Serial No.	Town or Village-tract.	Number of houses.	Total population.			Buddhists.		Animists.		Hindus.		Mahomedans.		Christians.		Others.	
			Male.	Female.	Total.	Male.	Female.	Male.	Female.	Male.	Female.	Male.	Female.	Male.	Female.	Male.	Female.
			4	5	6	7	8	9	10	11	12	13	14	15	16	17	18
31	Myenidwin	129	343	405	748	343	405	
32	Palan-o	211	515	547	1,062	515	547	
33	Kandaw	115	283	340	623	283	340	
34	Kan-yat	62	162	203	365	162	203	
35	Chaungmagaing	69	215	195	410	215	195	
36	Ashe Magyigan	34	48	51	99	48	51	
37	Ngapaunggan	32	65	49	114	65	49	
38	Tingat	138	307	349	666	307	349	
39	Myogintha	213	693	765	1,458	693	765	
40	Myinwan	185	376	399	775	376	399	
41	Wunbyi	72	80	123	203	80	123	
42	Kyunn yag ale	95	197	234	430	197	234	
43	Kyungale	58	131	139	270	131	139	
44	Zidaw	121	269	312	582	269	312	
45	Myedaingsu	135	287	313	570	287	313	
46	Mezalipingon	125	256	302	558	256	302	
47	Ngakyawkandaw	42	82	90	172	82	90	
48	West Magyigan	33	88	103	191	88	103	
49	Shinmagan	95	221	245	476	221	245	
50	East Nangat	70	179	174	353	179	174	
51	Beywa	292	539	583	1,122	539	583	
52	Shabingaing	89	125	208	393	125	208	
53	Hlègyaungbawk	34	66	66	122	66	66	
54	Nonbo	185	417	474	891	417	474	
55	Nyaungbin	225	561	668	1,229	561	668	
56	Htawkshabin	66	179	164	343	179	164	
57	Letpankyun	179	473	570	1,043	473	570	
58	Wetche-in	105	274	294	568	274	294	1	2	
59	Linbinngyan	121	298	351	651	298	350	
60	Linbinbetpin	309	657	816	1,473	657	816	
61	Tat-twin	104	233	245	478	233	245	
62	Nyaunggha	159	374	401	775	374	401	
63	Myitche	609	1,353	1,623	2,975	1,353	1,623	16	5	
64	Zigón	47	113	134	247	113	134	1	...	9	5	
65	Byin	72	163	179	362	163	179	13	...	3	

66	Kyat	351	777	909	1,586	777	909
67	Thayetkan	41	106	104	210	106	104
68	Gyobyan	46	143	149	292	143	149
69	Kanma	124	276	299	575	275	299	1
70	Letpya	136	337	352	689	337	352
71	Paunggwà	257	667	740	1,407	667	740
72	Yela	123	292	343	635	292	343
73	Yemyet	171	434	488	922	434	488
74	Mindandaw	2 ^c	56	70	126	56	70
75	Sanyaung	51	163	168	331	163	168
76	Myittha	65	199	182	381	99	182
77	Debya (Tabya)	74	195	189	384	185	189
78	Ashè-kabya	146	289	326	615	289	326
79	Myaokmaung	60	132	171	303	132	171
80	Shadu	63	183	170	365	136	170
81	Migyaungdwin	37	88	110	198	83	110
82	Gawun	74	202	223	424	202	222
83	Sobè	401	945	979	1,922	912	975	22	...	6	3	3	1
84	Legyin	13	34	36	70	34	36
85	Chaik	95	229	264	503	239	264
86	Lanya	68	171	200	371	171	200
87	Sitpin	111	283	297	580	283	297
88	Yenangyat	168	571	431	1,002	353	409	...	3	2	147	13	54	6	15	1	...
89	Tangyi	203	539	538	1,077	538	538	1
90	Seikkwa	436	1,172	1,031	2,303	934	1,006	179	19	54	2	5	4	...
91	Myozo	211	538	565	1,103	536	565	12
92	Pauktaw	294	623	732	1,355	606	732	9	...	8
	Travellers by road, rail, steamer, boat or in encampments,	375	72	447	199	50	7	2	19	1	131	13	19	7

YESAGYO TOWNSHIP.—Population of Towns and Village-tracts by Sex and by Religion.

Serial No.	Town or Village-tract.	Number of houses.	Total Population.			Buddhists.		Animists.		Hindus.		Mahomedans.		Christians.		Others.	
			Male.	Female.	Total.	Male.	Female.	Male.	Female.	Male.	Female.	Male.	Female.	Male.	Female.	Male.	Female.
			4	5	6	7	8	9	10	11	12	13	14	15	16	17	18
1	Township	22,165	44,424	51,332	95,756	44,379	51,373	15	4	16	1	6	...	6	4	2	...
1	Yesagyo	950	1,998	2,163	4,161	1,983	2,162	3	...	5	...	4	...	1	1	2	...
2	Gwegör	193	463	556	1,019	463	556
3	Wetkōk	94	203	221	424	203	221
4	Anauk-byiba	66	165	186	351	165	186
5	Ashe-byiba	49	125	155	280	125	155
6	Thitkyidaw	98	256	274	530	256	274
7	Laungshe	44	96	101	197	96	101
8	Ngayadaw	44	82	85	167	82	85
9	Kyangin	52	111	127	241	111	127
10	Kanbyu	168	342	422	764	342	422
11	Thitkawkseik	83	238	248	480	232	248
12	Wetkadaw	99	225	263	458	225	263
13	Auko	137	306	306	542	235	306
14	Payeintha	60	151	189	341	152	189
15	Ma-u-aukseik	138	216	274	490	216	274
16	Ma-u-ngō	298	577	675	1,252	577	675
17	Ma-u-aleywa	366	631	733	1,364	630	730
18	Ma-u-kyaukbu	77	167	198	365	167	198	1	3
19	Ma-u-taungywa	269	441	546	987	441	546
20	Waya	102	232	261	493	232	261
21	Thawkēba	40	69	89	168	69	89
22	Mōn-nyin	336	710	819	1,522	710	812
23	Sāywa	137	231	273	509	231	273
24	Kyauksat	280	520	615	1,135	520	615
25	Thazi	83	166	238	404	166	238
26	Buttho	228	484	490	974	483	493	1
27	Letpanbio	254	471	519	1,020	471	549
28	Zidaw	164	342	400	742	342	400
29	Kamadaw	64	107	119	226	107	119
30	Thēōn-ashe	100	193	242	434	192	242

31	Thebon (W)	84	148	190	388	148	190
32	Ywataung	159	350	386	736	350	386
33	Thanbaygyaung	193	444	520	964	444	520
34	Nipasedaw	76	183	190	378	188	190
35	Taung-u	478	953	1,130	2,082	953	1,130
36	Tantabin	95	226	272	493	226	272
37	Petpe	6	25	9	84	20	9
38	Myebnygyin	150	276	359	635	276	359
39	Salingon	164	273	298	571	273	298
40	Anyadaw	104	244	286	530	244	286
41	Satthwa	65	119	157	275	119	157
42	Baungbedan	193	386	397	782	386	397
43	Letpanbin (Kanzwe)	85	77	86	163	77	86
44	Nanwingwet	159	260	351	611	260	351
45	Kyetsugyin	207	334	362	696	334	362
46	Myenigon	41	79	100	179	79	100
47	Ywango	273	642	691	1,533	642	691
48	Kyaukka	32	69	91	160	69	91
49	Kwehmyok	216	485	492	937	435	492
50	Myithlagyaung	99	189	221	410	189	221
51	Kabauk	50	112	95	207	112	95
52	Yagyigon	57	101	108	209	101	108
53	Tando	117	180	226	406	177	226
54	Kyauktaga	50	96	90	188	96	90
55	Chinyagon	68	138	157	295	138	157
56	Gwebinya	119	211	244	455	211	244
57	Kaingmagvi	169	329	393	722	329	393
58	Myegedaung	164	359	359	718	359	359
59	Nyaungbintha	112	254	602	1,166	254	602
60	Pegon	229	564	602	1,166	564	602
61	Thabyebin	157	280	266	606	280	326
62	Theingon	69	147	147	294	147	147
63	Kyaukhlebin	83	51	66	117	51	66
64	Tansabin	121	215	311	526	215	311
65	Kanthit	221	427	469	896	427	469
66	Nyaungdaw	235	433	540	973	433	540
67	Zigyun	55	97	150	217	97	120
68	Kyawmakya	82	169	195	364	169	195
69	Pauktaw	103	202	198	400	202	198
70	Shwegyaung	91	191	211	403	191	211
71	Nyaungzauk	149	328	363	691	328	363
72	Ywathit (Nyaungzauk)	24	42	64	106	42	64
73	Paukywathit	70	125	161	286	125	161
74	Nanwinbo	14	36	24	60	36	24
75	Myezundaw	193	389	514	903	389	514

YESAGYO TOWNSHIP.—Population of Towns and Village-tracts by Sex and by Religion—continued.

Serial No.	Town or Village-tract.	Number of houses.	Total Population.			Buddhists.		Animists.		Hindus.		Mahomedans.		Christians.		Others.	
			Male.	Female.	Total.	Male.	Female.	Male.	Female.	Male.	Female.	Male.	Female.	Male.	Female.	Male.	Female.
1	2	3	4	5	6	7	8	9	10	11	12	13	14	15	16	17	18
76	Shwehlan	143	355	416	771	355	416
77	Sincheya	367	659	746	1,405	659	746
78	Pauktawkyun	50	154	127	281	154	127
79	Zayntni	86	155	186	341	155	186
80	Nwamaw	24	52	71	123	52	71
81	Thagaung	56	126	135	261	126	135
82	Pyónba	42	110	119	229	110	119
83	Milauingyun	220	411	441	852	411	441
84	Mibayaywa	339	649	740	1,389	649	740
85	Taunggón	58	137	156	293	137	156
86	Thabyebin	23	50	65	116	50	65
87	Chaukmukyun	29	67	80	147	67	80
88	Póndawbyi	246	567	651	1,218	567	651
89	Myedaw	197	494	494	988	494	494	2
90	Ngatayaw	198	368	445	813	368	445
91	Sethiywa	103	136	250	443	136	250
92	Kan-u	75	168	152	360	168	192
93	Bizatkón	61	108	114	222	108	114
94	Mobyu	42	81	84	165	81	84
95	Mogwè	64	135	139	274	135	139
96	Chinya	52	85	113	198	85	113
97	Mvezun	100	218	251	467	218	251
98	Minywa	172	373	464	837	373	464
99	Neyu	232	547	630	1,177	547	630
100	Talainggón	91	155	198	353	155	197	2	1
101	Medu	35	86	95	161	86	95
102	Hlegók	128	278	428	741	278	424
103	Kunthibin	168	436	497	895	436	497
104	Sinda	447	930	1,030	1,930	930	1,010
105	Natpyun	168	442	461	900	442	489

100	Swat	795	1,443	643	795
101	Swat	817	184	178	817
102	Swat	175	408	175	408
103	Swat	850	1,390	850	1,390
104	Swat	852	114	852	114
105	Swat	853		853	
106	Swat	854		854	
107	Swat	855		855	
108	Swat	856		856	
109	Swat	857		857	
110	Swat	858		858	
111	Swat	859		859	
112	Swat	860		860	
113	Swat	861		861	
114	Swat	862		862	
115	Swat	863		863	
116	Swat	864		864	
117	Swat	865		865	
118	Swat	866		866	
119	Swat	867		867	
120	Swat	868		868	
121	Swat	869		869	
122	Swat	870		870	
123	Swat	871		871	
124	Swat	872		872	
125	Swat	873		873	
126	Swat	874		874	
127	Swat	875		875	
128	Swat	876		876	
129	Swat	877		877	
130	Swat	878		878	
131	Swat	879		879	
132	Swat	880		880	
133	Swat	881		881	
134	Swat	882		882	
135	Swat	883		883	
136	Swat	884		884	
137	Swat	885		885	
138	Swat	886		886	
139	Swat	887		887	
140	Swat	888		888	
141	Swat	889		889	
142	Swat	890		890	
143	Swat	891		891	
144	Swat	892		892	
145	Swat	893		893	
146	Swat	894		894	
147	Swat	895		895	
148	Swat	896		896	
149	Swat	897		897	
150	Swat	898		898	
151	Swat	899		899	
152	Swat	900		900	
153	Swat	901		901	
154	Swat	902		902	
155	Swat	903		903	
156	Swat	904		904	
157	Swat	905		905	
158	Swat	906		906	
159	Swat	907		907	
160	Swat	908		908	
161	Swat	909		909	
162	Swat	910		910	
163	Swat	911		911	
164	Swat	912		912	
165	Swat	913		913	
166	Swat	914		914	
167	Swat	915		915	
168	Swat	916		916	
169	Swat	917		917	
170	Swat	918		918	
171	Swat	919		919	
172	Swat	920		920	
173	Swat	921		921	
174	Swat	922		922	
175	Swat	923		923	
176	Swat	924		924	
177	Swat	925		925	
178	Swat	926		926	
179	Swat	927		927	
180	Swat	928		928	
181	Swat	929		929	
182	Swat	930		930	
183	Swat	931		931	
184	Swat	932		932	
185	Swat	933		933	
186	Swat	934		934	
187	Swat	935		935	
188	Swat	936		936	
189	Swat	937		937	
190	Swat	938		938	
191	Swat	939		939	
192	Swat	940		940	
193	Swat	941		941	
194	Swat	942		942	
195	Swat	943		943	
196	Swat	944		944	
197	Swat	945		945	
198	Swat	946		946	
199	Swat	947		947	
200	Swat	948		948	

YESAGYO TOWNSHIP.—Population of Towns and Village-tracts by Sex and by Religion—concluded.

Serial No.	Town or Village-tract.	Number of houses.	Total Population.			Buddhists.		Animists.		Hindus.		Mahomedans.		Christians.		Others.	
			Male.	Female.	Total.	Male.	Female.	Male.	Female.	Male.	Female.	Male.	Female.	Male.	Female.	Male.	Female.
1	2	3	4	5	6	7	8	9	10	11	12	13	14	15	16	17	18
151	Kvuywa	112	167	253	420	167	553
152	Singyoywathit	59	103	155	258	103	155
153	Thedaw	127	298	326	619	293	326
154	Kunthikan	75	173	237	460	173	237
155	Taungedaw	219	434	613	1,037	424	613
156	Sinmayò	175	413	397	810	413	397
157	In-ma (East)	91	139	134	273	139	134
158	Nga-mya	81	215	219	434	215	219
159	Kyunbyat	111	209	300	509	209	300
160	Ngalun	199	418	478	896	418	478
161	Siga	54	120	129	249	120	129
162	Kwedang	40	100	104	204	100	104
163	Zarama	195	388	482	870	388	482
164	Paraba	109	223	250	473	223	250
165	Aungbanchaung	80	193	195	388	193	195
	Travellers by road, rail, steamer, boat or in encampments.	...	139	17	156	139	17

MYAING TOWNSHIP.—Population of Towns and Village-tracts by Sex and by Religion.

Serial No.	Town or Village-tract.	Number of houses.	Total Population.			Buddhists.		Animists.		Hindus.		Mahomedans.		Christians.		Others.	
			Male.	Female.	Total.	Male.	Female.	Male.	Female.	Male.	Female.	Male.	Female.	Male.	Female.	Male.	Female.
			4	5	6	7	8	9	10	11	12	13	14	15	16	17	18
1	Township	16,661	36,460	42,509	78,969	36,416	42,503	13	1	20	...	9	5	2	...
										8	...	1
1	Myaing	652	1,418	1,667	3,085	1,409	1,667
2	Chaungsongyi	579	1,550	1,782	3,332	1,560	1,782
3	Hnansagyin	44	92	123	220	92	128
4	Kyaukkan	92	151	179	330	151	179
5	Kyauktaung	113	216	265	551	246	305
6	Kinge	28	57	53	110	57	53
7	Thidinbin	82	145	187	332	145	187
8	Pongyikan	184	364	406	769	364	405
9	Banbo	50	113	143	253	113	143
10	Thamingyauk	66	159	216	275	159	216
11	Ywatha	65	131	157	288	131	283
12	Leda	64	157	179	335	157	179
13	Ywathit	94	210	300	510	210	364
14	Taunggaing	146	297	364	661	297	369
15	Ywashe	118	242	339	581	242	339
16	Htegok	63	131	139	270	131	139
17	Tonma	72	142	158	300	142	158
18	Pazwa	539	539	583	1,127	539	690
19	Pyathi	213	509	620	1,119	509	690
20	Tawma (Thanbo)	103	217	235	452	217	235
21	Kainglo	44	106	101	207	106	101
22	Tanbingan	85	214	232	446	214	232
23	Paungdo	246	421	521	942	421	521
24	Lingataw	239	596	731	1,327	594	731
25	Tegyí	112	289	332	671	289	332
26	Pudwin	46	107	124	231	107	124
27	Tawywa	83	185	202	447	185	202
28	Kyigan	971	576	761	1,337	576	761
29	Taungbo	67	160	215	375	160	215
30	Kanbani	34	65	69	134	65	69

MYAING TOWNSHIP.—Population of Towns and Village-tracts by Sex and by Religion—continued.

Serial No.	Town or Village-tract.	Number of houses.	Total Population.			Buddhists.		Animists.		Hindus.		Mahomedans.		Christians.		Others.	
			Male.	Female.	Total.	Male.	Female.	Male.	Female.	Male.	Female.	Male.	Female.	Male.	Female.	Male.	Female.
1	2	3	4	5	6	7	8	9	10	11	12	13	14	15	16	17	18
31	Kökkozu	54	119	148	267	119	148
32	Letyetma	426	67	976	1,653	677	976
33	Kyauksaukma	10	18	31	49	18	31
34	Pyintha	52	116	144	260	116	144
35	Könbalu	73	161	182	343	161	182
36	Alöngyi	56	53	66	119	53	66
37	Okpo	132	293	292	550	293	292
38	Magyigan	62	140	160	300	140	160
39	Nagabwet	44	78	103	181	78	103
40	Tanaungwun	103	213	257	470	213	257
41	Könzin	72	158	174	332	158	174
42	Magyigön	49	129	139	269	129	139
43	Baingan	80	171	214	385	171	214
44	Gyökkön	78	135	141	276	135	141
45	Nyaunggön	113	299	283	542	299	283
46	Thanu law	35	78	102	180	78	102
47	Kyetmauk	63	155	179	334	155	179
48	Obo	105	291	234	539	291	234
49	Thinma	107	246	261	507	246	261
50	Seikche	93	219	220	439	219	220
51	Taungzon	171	365	383	753	365	388
52	Baungbin	211	514	497	1,011	506	493	3	...	7	...	4
53	Anyadaw	190	448	449	897	448	449	1
54	Bahin	108	281	258	539	281	258
55	Thanatyin	135	309	323	647	309	323
56	Wetpo	75	155	188	343	155	188
57	Wedaug	164	320	323	643	321	323
58	Myauktaw	109	241	224	475	241	224
59	Nyaungma	40	93	88	171	93	88
60	Siazwo	103	356	343	699	356	343

61	Paukkaung	...	65	159	180	319	159	160
62	Thayagón	...	44	101	136	247	101	146
63	Mindóu	...	91	219	222	461	219	232
64	Shandón	...	83	110	105	235	110	105
65	Thadót	...	185	241	263	504	241	263
66	Kyetsa	...	210	479	501	980	479	501
67	Sensein	...	71	153	159	312	153	159
68	Nagyizu	...	107	231	263	494	2 1	263
69	Myozo (N)	...	93	210	212	423	210	212
70	Kumlat	...	79	160	178	338	160	178
71	Thangyaung	...	159	318	394	712	318	334
72	Taungyo	...	25	63	62	135	63	62
73	Mintthagya	...	93	266	262	528	266	263
74	Kangyidaw	...	21	58	51	109	58	51
75	Tabóndaw	...	83	171	244	415	171	244
76	Wetkaung	...	16	27	49	76	27	49
77	Wetslé	...	48	77	133	209	77	132
78	Tegyan	...	90	61	112	173	61	111
79	Gwehinlé	...	120	227	307	534	227	307
80	Thabyegyin	...	40	93	115	208	93	115
81	Paukpyin	...	41	94	121	215	94	121
82	Kyaunggón	...	37	74	104	173	74	104
83	Shwelinzwè	...	286	514	636	1,150	514	636
84	Magyilebin	...	47	94	94	188	94	94
85	Kanni	...	108	184	259	443	181	259
86	Kannet	...	19	35	37	72	35	37
87	Kundaw	...	111	260	304	564	260	304
88	Kangyidaw	...	81	191	228	419	191	228
89	Alèzu	...	64	139	151	293	139	151
90	Nyaungpinywa	...	62	125	161	286	125	161
91	Kanbu	...	79	157	188	345	157	188
92	Alégan	...	68	162	195	357	162	195
93	Tanaurgthonbin	...	16	37	50	87	37	50
94	Letsegan	...	74	153	153	305	153	153
95	Yemyet	...	68	155	168	323	155	168
96	Ywathit	...	27	49	59	108	49	59
97	Obyun	...	19	174	179	353	174	179
98	Kyauktaing	...	91	140	214	354	140	214
99	Hnawgan	...	27	64	89	153	64	89
100	Seiksin	...	195	391	429	823	394	429

MYAING TOWNSHIP.—Population of Towns and Village-tracts by Sex and by Religion—concluded.

Serial No.	Town or Village-tract.	Number of houses.	Total Population.			Buddhists.		Animists.		Hindus.		Mahomedans.		Christians.		Others.	
			Male.	Female.	Total.	Male.	Female.	Male.	Female.	Male.	Female.	Male.	Female.	Male.	Female.	Male.	Female.
1	2	3	4	5	6	7	8	9	10	11	12	13	14	15	16	17	18
101	Paikthin	158	366	394	760	366	394
102	Taunggya	37	34	34	58	34	34
103	Wagan	30	85	76	141	141	65	76
104	Tachanbà	42	59	101	190	89	101
105	Kyanzein	50	87	110	197	87	110
106	Magyiza	127	309	331	630	309	331
107	Kyaukpu	49	121	129	250	131	129
108	Wetkya	50	113	142	255	113	142
109	Kyauksauk	114	325	243	463	225	243
110	Kyauksauk (S)	66	174	196	370	174	196
111	Mónnyin	239	618	700	1,318	614	695
112	Hnawbin	108	292	313	605	292	313	4	5
113	Nyaungdwin	99	226	265	491	226	265
114	Thetkgyin	85	181	229	410	181	229
115	Sainggaung	83	184	217	401	184	217
116	Dahatchauk	85	165	203	368	165	203
117	Kandein	129	448	548	906	448	548
118	Myodwin	458	770	1,206	1,976	770	1,206
119	Nyaungk	62	192	189	381	192	189
120	Myotha	165	352	437	749	352	437
121	Thútyidaw	160	348	386	734	348	386
122	Paungdaw	45	102	105	207	102	105
123	Myetha	62	110	143	253	110	143
124	Paunggyò	121	314	361	675	314	361
125	Letpanaing	133	228	259	537	228	259
126	Nyaungnyodaw	73	143	186	329	143	186
127	Thamangon	50	113	117	230	113	117
128	Sitaung	55	120	157	277	120	157
129	Tangedaw	53	110	118	228	110	118
130	Kywebòk	80	181	176	357	181	176

PAUK TOWNSHIP.—Population of Towns and Village-tracts by Sex and by Religion.

Serial No.	Town or Village-tract.	Number of houses.	Total Population.			Buddhists.		Animists.		Hindus.		Mahomedans.		Christians.		Others.	
			Male.	Female.	Total.	Male.	Female.	Male.	Female.	Male.	Female.	Male.	Female.	Male.	Female.	Male.	Female.
			4	5	6	7	8	9	10	11	12	13	14	15	16	17	18
1	Township	9,994	24,917	25,222	50,137	24,768	25,209	24	...	107	6	9	2	5	2	4	1
2	Pauk	547	1,419	1,837	2,756	1,816	1,829	4	...	91	6	3	...	1	1	4	1
3	Myaukphet	198	450	453	908	450	468
4	Thavettaw	60	138	160	298	137	160	1
5	Chaunggwa	33	79	90	169	79	90
6	Pauckhaung	26	76	105	181	76	105
7	Kuga	88	949	294	483	244	224	2	...	3
8	Thabyeye	26	65	63	127	60	60	2	...	3	2
9	Indaw (north)	120	256	275	531	256	275
10	Yegon	68	156	197	353	156	197
11	Indaw (south)	62	85	86	171	85	86
12	Dawtha	63	124	115	239	124	115
13	Chaunggu	308	743	787	1,530	738	787	4	...	1
14	Mogaung	24	62	62	124	62	62
15	Subökkon	17	34	44	78	34	44
16	Saban	193	290	302	592	290	302
17	Lindaung	51	156	143	299	156	143
18	Palauung	63	148	161	309	148	161
19	Kyauktaga	17	42	37	79	42	37
20	Onhmin	35	91	88	179	91	88
21	Hmyabaing	102	314	286	600	314	286
22	Yebyn	18	57	44	101	53	43	6	1	1
23	Kabaing (south)	73	220	203	423	220	203
24	Kabaing (north)	36	93	94	187	93	94
25	Kyaukmasin	55	131	114	245	131	114
26	Kyawtha	20	49	57	106	49	57
27	Tandaw (Kyawtha)	31	86	69	155	86	69
28	Zaho	15	34	53	87	34	53
29	Kaungbaung	24	73	51	124	73	51
30	Sathein	104	248	208	456	248	208
31	Gwegaing	74	205	192	397	205	192
32	Kyundaing	106	251	244	495	251	244
33	Nyaungyin	105	264	255	519	264	255
34	Tayawgaing	49	118	113	231	118	113
35	Wetpök	79	123	142	265	123	142

35	Zibya	131	339	358	690	339	358
36	Mingaing	39	91	97	188	91	7
37	Zaung-yabin	52	152	136	288	152	196
38	Wandin	63	165	167	339	165	167
39	Wattaw	183	292	325	617	292	325
40	Lè-o	60	197	196	333	197	196
41	Thayetkan	71	179	183	369	179	183
42	Yega	38	123	129	251	123	77
43	Aingma	36	81	77	158	81	77
44	Letpando	46	100	101	201	100	101
45	Kyauktaingkin	96	248	238	486	248	238
46	Tabaukkôn	33	90	80	170	90	80
47	Myaungwônbank	105	277	286	563	277	70
48	Myogintha	32	70	70	140	70	70
49	Chaungzauk	56	153	158	311	153	158
50	Yedin	38	103	124	227	103	124
51	Peiktaw	48	185	189	347	185	185
52	Ainggaing	204	567	562	1,129	567	562
53	Minggaung	73	194	185	379	194	185
54	Schिंगyi	61	152	167	309	152	167
55	Kaumabyu	47	114	119	233	114	119
56	Taukshabin	46	117	99	216	117	99
57	Tingókpyin	198	497	574	1,071	497	574
58	Indein	39	237	274	511	237	274
59	Thanatpinzin	85	111	118	229	111	118
60	Sabé	74	261	263	514	261	263
61	Kôkkozu	51	144	160	304	144	160
62	Kanbyo	159	450	461	911	450	461
63	Sulegôn (Yinma)	92	287	286	573	287	286
64	Lebb	118	343	333	676	343	333
65	Yinma	261	760	771	1,531	760	771
66	Yinmagôn	59	169	168	337	169	168
67	Kyauklôn	25	64	71	135	64	71
68	Ta-ngédaw	14	38	44	77	38	44
69	Pobylônkan	55	144	130	274	144	130
70	Thanbaya-aing	128	333	355	738	333	355
71	Yagyibyin	59	154	175	359	175	361
72	Payadaung	117	317	361	678	317	361
73	Pekunnapiu	63	156	220	406	156	220
74	Tablingin	37	114	106	220	114	106
75	Natayin	36	77	115	193	77	115
76	Pyinchaung	204	632	767	1,449	632	767
77	Ngamo (Yinma)	123	313	364	677	313	364
78	Indaw (Ioksu)	37	95	89	184	95	89
79	Natha	271	753	788	1,540	753	788
80	Sulegôn (Natha)	140	334	345	679	334	345

PAUK TOWNSHIP.—Population of Towns and Village-tracts by Sex and by Religion—concluded.

Serial No.	Town or Village-tract.	Number of Houses.	Total Population.			Buddhists.		Animists.		Hindus.		Mahomedans.		Christians.		Others.	
			Male.	Female.	Total.	Male.	Female.	Male.	Female.	Male.	Female.	Male.	Female.	Male.	Female.	Male.	Female.
			4	5	6	7	8	9	10	11	12	13	14	15	16	17	18
81	Yegyaw	58	148	165	813	148	165
82	Kya-o (Natha)	30	76	96	171	75	96
83	Nyaungwun	208	618	611	1,289	618	611
84	Ywatha	37	94	117	211	94	117
85	Natsingon	36	90	98	188	90	98
86	Kyanyin	169	509	621	1,030	509	521
87	Kyaunggon	70	203	201	404	203	201
88	Yeni	29	83	89	164	82	83
89	Shabinye	100	298	370	668	298	370
90	Kinshe	130	410	410	820	410	410
91	Zibyugon	55	131	141	272	131	141
92	Wunib	20	53	73	135	53	73
93	Palangon	19	35	24	59	35	24
94	Taungmyin	41	113	103	228	113	103
95	Ywathit	51	137	141	278	137	141
96	Kyabyitkan	60	190	162	352	190	162
97	Myegya	25	76	57	133	76	57
98	Thabutsu	74	143	149	292	138	149	5
99	Thigyauk	40	104	105	209	104	105
100	Lelan	150	443	430	882	442	420
101	Thitmyinaung	50	126	153	279	126	153
102	Tedawya	172	449	404	853	449	404
103	Chaungna	78	221	226	447	221	226
104	Tatkon	109	310	332	642	310	332
105	Kyaukka	132	392	402	794	392	402
106	Taungbet	51	207	199	406	207	199
107	Wmchon	99	295	268	563	295	268
108	Taza	61	216	178	394	216	178
109	Letpan (Pauk)	78	245	207	452	245	207
110	Tandaw	26	86	69	155	86	69
111	Kaingle	79	218	233	451	218	233
	Travellers by road, rail, steamer, boat or in encampments.	...	359	358	717	353	358	3

SAW TOWNSHIP.—Population of Towns and Village-tracts by Sex and by Religion.

Serial No.	Town or Village-tract.	Number of Houses.	Total Population.			Buddhists.		Animists.		Hindus.		Mahomedans.		Christians.		Others.	
			Male.	Female.	Total.	Male.	Female.	Male.	Female.	Male.	Female.	Male.	Female.	Male.	Female.	Male.	Female.
			4	5	6	7	8	9	10	11	12	13	14	15	16	17	18
	Township	4,645	11,588	10,874	22,462	11,120	10,479	436	395	30	...	1	...	1
1	Kyi	118	322	317	639	322	317
2	Lesaw	42	83	98	181	83	98
3	Hnaw	69	159	192	351	159	192
4	Mi-e	92	301	259	560	301	259
5	Ywatha	33	81	70	151	81	70
6	Peinnè	69	219	166	378	212	166
7	Anyapanbalun	43	103	112	218	106	112
8	Akyepanbalun	39	118	107	220	113	107
9	Lonbaung	28	103	76	179	103	76
10	Thayetchin	38	97	90	187	97	90
11	Gonbo	61	151	146	297	151	146	1
12	Pauzan	65	147	165	302	146	165	1
13	Teywa	60	142	144	286	142	144
14	San	27	89	95	184	89	95
15	Yeshin	28	99	77	176	99	77
16	Aukkyin	26	73	62	135	66	57	7	5
17	Taungdet	30	92	72	164	92	72
18	Pyinè	21	57	53	110	55	53	2
19	Kangri	25	58	75	133	58	75
20	Yinyè	37	83	84	167	83	84
21	Kyandaw	24	61	53	114	61	53	1	1
22	Kyakat (Yaw)	86	233	169	402	231	169
23	Chaunggu	40	116	86	202	116	86
24	Myobauk	14	34	37	71	34	37
25	Natyè	82	219	407	626	219	407
26	Kyauktu (Yaw)	26	59	61	120	59	61
27	Paukkaung	40	75	73	148	75	73
28	Mingyi	33	86	79	165	86	79
29	Leywa	24	48	56	104	48	56
30	Ngalmn	41	137	88	225	137	88

SAW TOWNSHIP.—Population of Towns and Village-tracts by Sex and by Religion—concluded.

Serial No.	Town or Village-tract.	Number of Houses.	Total Population.			Buddhists.		Animists.		Hindus.		Mahomedans.		Christians.		Others.	
			Male.	Female.	Total.	Male.	Female.	Male.	Female.	Male.	Female.	Male.	Female.	Male.	Female.	Male.	Female.
			4	5	6	7	8	9	10	11	12	13	14	15	16	17	18
31	Tawkalun ...	32	102	86	188	102	86
32	Kyaukma ...	27	60	65	125	60	65
33	Kyaukpyin ...	20	51	41	92	51	41
34	Tabyin ...	78	197	184	381	197	184
35	Pindaung ...	50	126	106	232	126	106
36	Pasok ...	87	157	241	398	157	241
37	Ancin ...	56	142	126	268	142	126
38	Myaukmagyin ...	21	62	47	99	62	47
39	Latpan (Pasok) ...	31	63	84	147	63	84
40	Man ...	46	123	108	241	127	108	6
41	Kungin ...	30	78	64	142	78	64
42	Kyaukjeik ...	37	126	85	211	126	85
43	Thalè ...	33	87	76	163	87	76
44	Okpo ...	19	52	45	98	52	46
45	Hngetchaung ...	59	147	156	303	147	156
46	Nyaunggan ...	68	165	176	341	165	176
47	Kyetein ...	78	161	161	322	161	161
48	Tamaka ...	23	63	61	124	63	61
49	Letpanchaung (Saw) ...	12	38	28	66	38	28
50	Kyauktan (Saw) ...	110	218	274	592	317	374	...	1
51	Kyaukswè ...	53	180	137	317	180	137
52	Kachaung ...	47	172	117	289	172	117
53	Kyauksit ...	41	125	101	226	125	101
54	Anyakadin ...	88	111	81	192	111	81
55	Akyekadin ...	30	70	66	136	70	66
56	Leyin ...	83	111	97	208	111	97
57	Saw ...	180	410	352	768	388	351	7	1	21
58	Kwinchaung ...	23	41	45	86	41	45
59	Minlà ...	32	73	53	126	73	53
60	Thigôn ...	132	231	255	486	231	255
61	Taungbogyi ...	30	48	54	102	48	54
62	Kinbyin ...	15	38	35	68	38	35
63	Hlawga ...	24	36	59	94	36	59
64	Yinyegyaung ...	64	161	171	332	161	171
65	Ayaingke ...	150	326	332	658	326	329	1	3

SEIKPYU TOWNSHIP.—Population of Towns and Village-tracts by Sex and by Religion.

Serial No.	Town or Village-tract.	Number of Houses.	Total Population.			Buddhists.		Animists.		Hindus.		Mahomedans.		Christians.		Others.	
			Male.	Female.	Total.	Male.	Female.	Male.	Female.	Male.	Female.	Male.	Female.	Male.	Female.	Male.	Female.
1	2	3	4	5	6	7	8	9	10	11	12	13	14	15	16	17	18
	Township	6,223	14,708	15,985	30,693	14,690	15,982	3	...	10	...	3	2	3
1	Seikpyu	418	987	1,075	2,012	923	1,072	1	...	9	...	2	2	3
2	Kodaung	170	425	497	922	425	497
3	Kanbagyi	55	143	185	327	142	185
4	Thanzalon	69	130	156	286	130	156
5	Hnawthaung	38	72	101	178	72	101
6	Chindaung	189	456	478	934	456	478
7	Aukseik	195	448	547	995	446	547	2
8	Myingawa	135	322	434	756	322	434
9	Tegyí	74	155	198	353	155	198
10	Tabingan	25	64	73	137	64	73
11	Kadatkôn	92	76	92	168	76	92
12	Teingan	155	307	357	664	307	357
13	Myegyandaw	43	111	117	228	111	117
14	Gyokchaunggyi	42	112	147	259	112	147
15	Gwebin	82	191	236	427	191	236
16	Tanbingyang	108	291	307	598	291	307
17	Ywathit	100	252	285	537	252	285
18	Chadauk	49	118	129	247	118	129
19	Kazwè	113	234	256	470	234	256
20	Yebók	77	183	189	372	183	189
21	Kandwin	81	176	168	344	176	168
22	Leikhan	70	160	183	343	160	183
23	Kyuthdaw	74	160	171	331	160	171
24	Nyaungbinyedwin	82	77	88	165	77	88
25	Magyigón	37	90	86	176	90	86
26	Tangyang	52	123	144	267	123	144
27	Kyaungywa	85	212	202	414	212	202
28	Nyaungnichauung	72	133	159	297	133	159
29	Lwintna	14	31	33	65	31	33
30	Könywa	67	143	184	327	143	184

81	Kyitpyin	...	55	124	138	262	124	138
82	Ngachinchaung	...	85	85	80	165	85	80
83	Tketkègyin	...	49	114	108	120	114	106
84	Tun	...	53	107	127	234	107	127
85	Kazunma	...	140	304	270	574	308	270
36	Kyunchaung	..	66	167	160	327	167	160
37	Pepingyin	...	35	84	79	163	84	79
38	Thayetpin	...	23	77	51	128	77	51
39	Kawton	...	181	375	371	746	374	371	1
40	Magyizu	...	61	98	109	202	98	109
41	Kawton Kyaungywa	...	54	131	140	271	131	140
42	Ngakwe-ywathit	...	89	229	209	448	239	209
43	Saingni	...	63	125	133	258	125	133
44	Ngapya	...	134	329	338	667	329	338
45	In-ywa	...	125	293	289	575	293	282
46	Paing	...	88	116	100	216	116	100
47	Shahla	...	105	273	238	511	273	238
48	Taungyo	...	32	93	75	168	93	75
49	Kinma	...	88	182	200	382	182	200
50	Kinsók	...	57	120	125	245	120	125
51	Letsà	...	119	255	239	594	255	239
52	Wayenbyin	...	107	277	255	632	277	255
53	Kóngôn	...	40	114	114	228	114	114
54	Tamagauk	...	57	139	138	275	139	136
55	Ngapet	...	107	233	232	465	233	232
56	Yeyingyaung	...	28	68	71	129	68	71
57	Kushe	...	263	763	270	1,628	763	770
58	Tetma	...	61	154	155	309	154	155
59	Kyaukkyi	...	49	128	159	287	128	159
60	Taungbyu	...	68	161	213	394	161	213
61	Nyaung-gwewa (Ingan)	...	26	50	77	127	50	77
62	Nyaung-gwewa-gagwe	...	24	51	53	104	51	53
63	Ingan	...	81	205	193	398	205	193
64	Thapandaung	...	47	89	114	208	89	114
65	Kin-mundaung	...	68	211	193	404	211	193
66	Lethawa	...	31	80	60	140	80	60
67	Kagwe	...	41	115	114	219	105	114
68	Kyabe	...	33	81	92	173	81	92
69	Kanbyu (W)	...	116	315	253	568	315	258
70	Salaik	...	38	111	105	219	111	108

SEIKPYU TOWNSHIP.—Population of Towns and Village-tracts by Sex and by Religion—concluded.

Serial No.	Town or Village-tract.	Number of Houses.	Total Population.			Buddhists.		Animists.		Hindus.		Mahomedans.		Christians.		Others.	
			Male.	Female.	Total.	Male.	Female.	Male.	Female.	Male.	Female.	Male.	Female.	Male.	Female.	Male.	Female.
			4	5	6	7	8	9	10	11	12	13	14	15	16	17	18
71	Kabaing	57	100	140	240	100	140
72	Kandwin	81	141	141	282	141	141
73	Dawtha	87	141	175	316	141	175
74	Sindaung	20	32	63	95	32	63
75	Pindale	60	118	144	262	118	144
76	Mezalgwe	43	115	143	258	115	143
77	Chaungmagyi	116	276	392	603	276	392
78	Taywinmyaw	36	101	118	219	101	118
79	Sakan	66	146	169	315	146	169
80	Ywama	78	179	178	352	179	178

GANGAW TOWNSHIP.—Population of Towns and Village-tracts by Sex and by Religion.

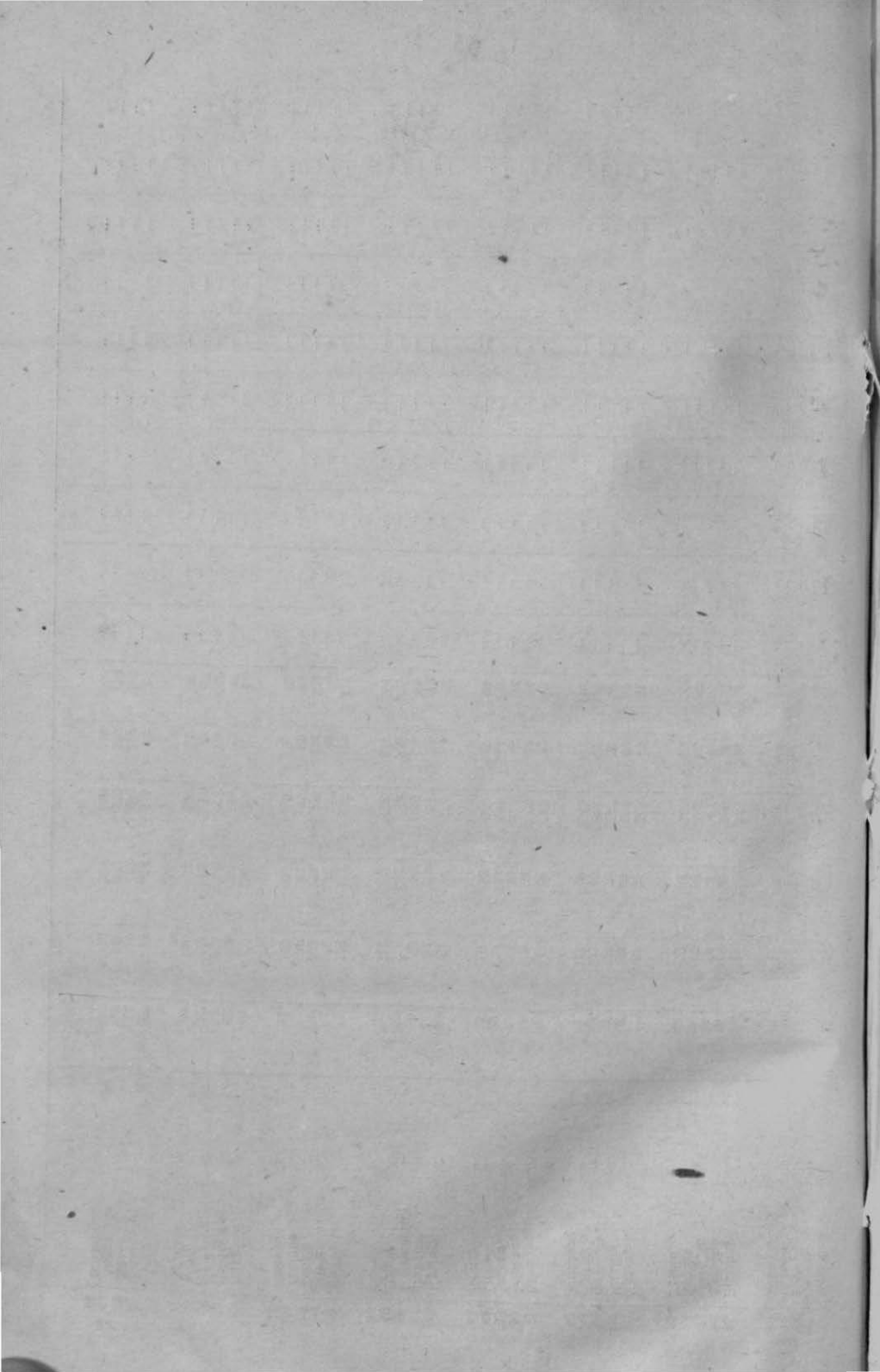
Serial No.	Town or Village-tract.	Number of Houses.	Total Population.			Buddhists.		Animists.		Hindus.		Mahomedans.		Christians.		Others.	
			Male.	Female.	Total.	Male.	Female.	Male.	Female.	Male.	Female.	Male.	Female.	Male.	Female.	Male.	Female.
			4	5	6	7	8	9	10	11	12	13	14	15	16	17	18
1	Township	5,817	15,418	15,321	30,739	14,119	14,109	1,146	1,175	74	18	69	10	7	7	8	2
1	Gangaw	209	789	806	1,575	681	763	81	43	4	...	3	1
2	Baingbin	12	17	30	47	14	25	3	5
3	Winwa	51	131	102	233	121	103
4	Léyi	48	134	119	253	134	119
5	Ngabók	12	32	28	60	32	28
6	Taungkinyan	22	74	50	124	74	50
7	Myintha	165	453	421	879	410	376	48	45
8	Ywama	28	83	88	171	83	88
9	Hnauka	80	222	209	491	198	190	24	19
10	Chaunggauk	47	96	119	215	96	119
11	Mozo	47	123	140	263	123	140
12	Hmwelè	89	149	160	309	114	117	35	43
13	Kantha	80	201	209	410	192	200	9	9
14	Kyunkontha	57	154	169	313	144	154	10	5
15	Kan	232	619	583	1,203	572	538	45	45	2
16	Bawbyin	71	145	179	324	85	94	60	85
17	Shwedaung	19	33	27	59	32	27
18	Chaungzôn	15	31	58	84	31	53
19	Tawzale	22	46	53	99	46	53
20	Letpan	53	154	169	323	154	169
21	Mauk	57	234	173	397	205	155	18	18
22	Kywènan	17	54	51	105	54	51
23	Taungyabyin	16	49	33	87	49	38
24	Telaw	20	62	54	116	60	54	2
25	Mauklin	76	220	239	459	220	239
26	Myinza	54	165	143	308	165	143
27	Kyawa	60	187	186	373	187	186
28	Kyundat	10	31	27	58	27	27
29	Kunzè	43	210	98	302	209	92	1
30	Po-u	23	279	247	526	274	247	5

GANGAW TOWNSHIP.—Population of Towns and Village-tracts by Sex and by Religion—concluded.

Serial No.	Town or Village-tract.	Number of Houses,	Total Population.			Buddhists,		Animists.		Hindus.		Mahomedans.		Christians.		Others.	
			Male.	Female.	Total.	Male.	Female.	Male.	Female.	Male.	Female.	Male.	Female.	Male.	Female.	Male.	Female.
1	2	3	4	5	6	7	8	9	10	11	12	13	14	15	16	17	18
31	Labo	100	292	284	576	298	284
32	Ywazi	35	86	78	164	80	78
33	Saingdu	116	300	300	600	296	300	4
34	Yebok	12	29	27	56	29	27
35	Myaukkon	186	500	409	909	378	368	12	11	45	16	57	7	5	5	3	2
36	Pyä	70	215	215	430	215	215
37	Pyitma	28	49	65	114	49	65
38	Lema	25	103	21	124	91	20	12
39	Zahaw	201	503	456	959	363	299	150	157	1
40	Gangaw W	175	462	472	934	423	424	39	48
41	Shonshi	346	745	784	1,529	277	271	459	512	5	1
42	Shaukipw	49	131	133	264	131	133	5	1	4
43	Zibya	23	48	47	95	48	47
44	Magyigin	17	38	42	80	38	42
45	Taungbyin	47	102	108	210	102	108
46	Kaukku	86	73	86	164	78	86
47	Pandek	32	93	76	169	93	76
48	Wetchiba	31	48	63	116	8	14	40	54
49	Myeni	17	40	51	91	40	51
50	Läin	18	43	51	94	43	51
51	Einhtit	35	86	82	168	86	82
52	Tawbo	41	109	122	231	109	122
53	Minywa	316	848	888	1,736	839	884	2	...	2	1	4	2	1	1
54	Pyintha	49	101	116	217	63	75	38	41
55	Chaungnet	31	79	96	175	79	96
56	Petwun	27	97	55	152	87	55	10
57	Mawlä	24	84	63	152	78	68	4	...	1
58	Kyabat	13	34	40	74	34	40
59	Panan	70	205	210	415	205	210
60	Yiama	23	86	82	168	86	82

TILIN TOWNSHIP.—Population of Towns and Village-tracts by Sex and by Religion.

Serial No.	Town or Village-tract.	Number of Houses.	Total Population.			Buddhists.		Animists.		Hindus.		Mahomedans.		Christians.		Others.	
			Male.	Female.	Total.	Male.	Female.	Male.	Female.	Male.	Female.	Male.	Female.	Male.	Female.	Male.	Female.
			4	5	6	7	8	9	10	11	12	13	14	15	16	17	18
1	Township	2,653	7,464	7,288	14,652	7,410	7,159	26	29	23	...	5
1	Tilin	160	446	411	857	434	411	5	...	4	...	3
2	Nyaunggan	108	261	241	505	260	244	1
3	Tefndaing	32	92	103	195	92	103
4	Wabin	99	238	261	549	288	261
5	Laungbo-ngè	25	71	77	148	71	77
6	Aingma	35	127	104	231	127	104
7	Zidaw	27	82	80	162	82	80
8	Shwegondaing	25	70	79	149	70	79
9	Òndaw	32	106	106	212	106	106
10	Wetthet North	55	121	144	268	110	130	14	24
11	Wetshet-ywama	91	232	300	532	232	300
12	Wobogyang	23	78	70	142	71	69	1	1
13	Pazinchaung	16	40	44	84	40	44
14	Ponna	47	131	140	271	131	140
15	Tanbingon	61	160	169	329	160	169
16	Talin	111	305	245	550	305	245
17	Anaukbet	23	61	58	109	51	58
18	Taungbet	31	77	76	153	77	76
19	Thayaka	44	114	106	220	114	106
20	Aung	37	95	91	186	95	91
21	Kyakè	23	51	57	108	51	57
22	Nyaung-Ywathit	46	122	142	264	122	142
23	Nyaung-Ywahaung	19	44	52	96	44	52
24	Tingyaung	21	65	55	120	65	55
25	Wayingyaing	27	83	62	144	82	62



GAZETTEER B VOLUMES.

No.	District.	No.	District.
1	Akyab.	23	Pakòkku.
2	Hill District of Arakan.	24	Minbu.
3	Kyaukpyu.	25	Magwe.
4	Sandoway.	26	Mandalay.
5	Rangoon Town (Census Tables only).	27	Bhamo.
6	Insein.	28	Myitkyina.
7	Hanthawaddy (Syriam).	29	Katha.
8	Tharrawaddy.	30	Ruby Mines (including Mōng Mit State).
9	Pegu.	31	Shwebo.
10	Prome.	32	Sagaing.
11	Bassein.	33	Lower Chindwin.
12	Henzada.	34	Upper Chindwin.
13	Myaungmya.	35	Kyaukse.
14	Ma-ubin.	36	Meiktila.
15	Pyapōn.	37	Yamēthin.
16	Toungoo.	38	Myingyan.
17	Salween.	39	Northern Shan States (Census Tables only).
18	Thatōn.	40	Southern Shan States (Census Tables only).
19	Amherst.	41	Pakòkku Hill Tracts (Census Tables only).
20	Favoy.	42	Chin Hills (Census Tables only).
21	Mergui.		
22	Thayetmyo.		

