

K-39(h) (36)  
1924

17113

BURMA GAZETTEER

TAVOY DISTRICT

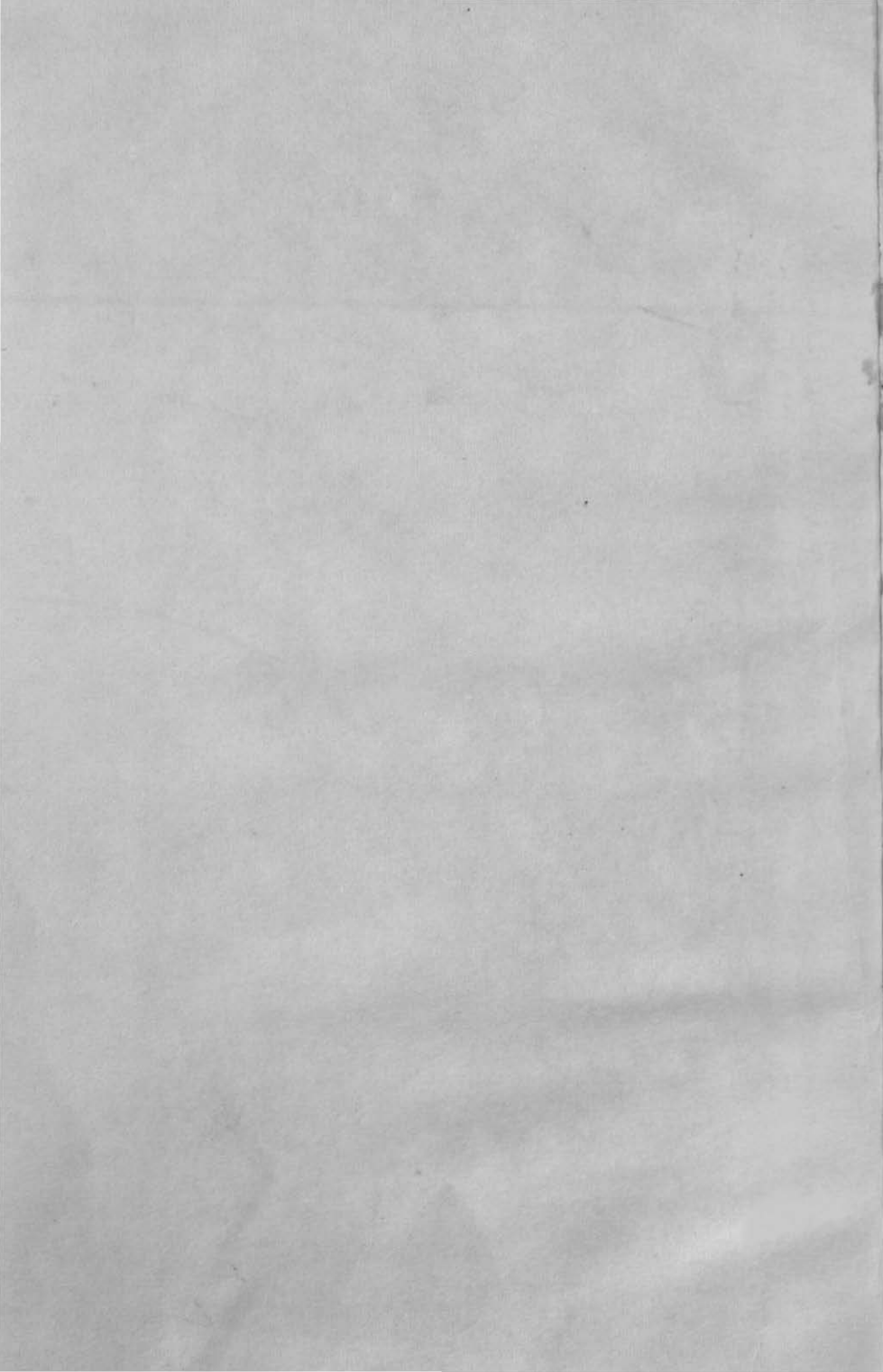
VOLUME B

No. 20

36

WEST PAKISTAN CIVIL SECRETARIAT  
LIBRARY COPY

(To be returned to the Library when done with)



BURMA GAZETTEER

TAVOY DISTRICT

VOLUME B

K 39 (b)

INCLUDING

TOWN AND VILLAGE CENSUS TABLES  
AND CONSTITUENT VILLAGE-TRACTS OF  
GROUPS AND CIRCLES NOTIFIED UNDER  
THE BURMA RURAL SELF-GOVERNMENT  
ACT, 1921.

No. 20.

9



RANGOON

OFFICE OF THE SUPDT., GOVT. PRINTING AND STATIONERY, BURMA.

1924

LIST OF AGENTS FOR THE SALE OF  
GOVERNMENT PUBLICATIONS.

IN INDIA.

AMERICAN BAPTIST MISSION PRESS, Rangoon.  
BISWAS & Co., 30, Lewis Street, Rangoon.  
INTERNATIONAL BUDDHIST BOOK DEPÔT, Post Box No. 971, Rangoon.  
MODERN PUBLISHING HOUSE, Ltd., Rangoon.  
RANGOON TIMES PRESS, Rangoon.  
MAUNG LU GALE, Law Book Depôt, 42, Ayo-o-gale, Mandalay.  
BURMA PUBLISHING Co., 71, Upper Main Road, Moulmein.  
BUTTERWORTH & Co. (India), Ltd., Calcutta.  
W. NEWMAN & Co., Calcutta.  
THACKER, SPINK & Co., Calcutta and Simla.  
\* D. B. TARAPOREVALA, SONS & Co., Bombay.  
THACKER & Co., Ltd., Bombay.  
HIGGINBOTHAM & Co., Madras.

IN EUROPE.

A. CONSTABLE & Co., 10, Orange Street, Leicester Square, W.C.  
BERNARD QUARITCH, 11, Grafton Street, New Bond Street, W.  
EAST & WEST, Ltd., 3, Victoria Street, S.W. 1.  
GRINDLAY & Co., 54, Parliament Street, S.W.  
KEGAN PAUL, TRENCH, TRUBNER & Co., Ltd., 68-74, Carter Lane,  
E.C., and 39, New Oxford Street, W.C.  
LUZAC & Co., 46, Great Russell Street, W.C.  
P. S. KING & SON, 2 and 4, Great Smith Street, Westminster, S.W.  
T. FISHER UNWIN, Ltd., 1, Adelphi Terrace, W.C.  
WHELDON & WESLEY, Ltd., 2, 3 and 4, Arthur Street, New Oxford  
Street, London, W.C. 2.  
W. THACKER & Co., 2, Creed Lane, Ludgate Hill, E.C.  
B. H. BLACKWELL, 50 and 51, Broad Street, Oxford.  
DEIGHTON, BELL & Co., Ltd., Trinity Street, Cambridge.  
OLIVER & BOYD, Tweeddale Court, Edinburgh, Scotland.  
E. PONSONBY, Ltd., 116, Grafton Street, Dublin, Ireland.  
ERNEST LEROUX, 23, Rue Bonaparte, Paris, France.  
MARTINUS NIJHOFF, The Hague, Holland.  
OTTO HARRASSOWITZ, Leipzig, Germany.  
R. FREDLANDER & SOHN, 11, Carlstrasse, Berlin, Germany.

---

\* For the sale of official publications excluding those of the  
Legislative Department.

## CONTENTS.

PART I.—GENERAL INFORMATION—	PAGE
Introduction	I
<b>STATEMENTS—</b>	
A.—Administrative Subdivisions	2
B.—Administrative Towns	3
C.—Distribution of Urban Population	4
D.—Urban Population classified by Religion	5
E.—Post Offices, Bazaars, Hospitals, etc.	6, 7
F.—Roads	8—10
G.—Railway Stations	11
H.—Steamer Routes	11
J.—Ferries	11
K.—Rates of Wages	11
L.—Police Strength and Distribution	12
 <b>PART II.—EXTRACTS FROM ANNUAL RETURNS—</b>	
I.—Temperature and Rainfall	13
II.—Administrative Divisions (omitted ; see pages 2 and 3).	
III.—Vital Statistics	14
IV.—Agricultural Statistics	15
V.—Crop Outturns	16
VI.—Loans	17
VII.—Wages and Prices (omitted ; see page 11).	
VIII.—Forests	18
IX.—Minerals	19
X.—Trades	20, 21
XI.—Roads	22
XII.—General Revenue	23
XIII.—Land Revenue	24
XIV.—Miscellaneous Revenue	25
XV.—District Cess Fund	26
XVI.—Municipalities	27
XVII.—Crime	28
XVIII.—Criminal Justice	29

PART II.—EXTRACTS FROM ANNUAL RETURNS— <i>concluded.</i>					PAGE
XIX.—Civil Justice	...	...	...	...	30
XX.—Registration (omitted).					
XXI.—Jails	...	...	...	...	31
XXII.—Hospitals (omitted; see page 6 and 7).					
XXIII.—Vaccination	...	...	...	...	32
XXIV.—Education	...	...	...	...	33

PART III.—TOWN AND VILLAGE CENSUS TABLES—

*Township.*—

Launglon	...	...	...	...	34
Tavoy	...	...	...	...	36
Thayetchaung	...	...	...	...	40
Yebyu	...	...	...	...	42

PART IV.—Constituent Village-tracts of Groups and Circles notified under the Burma Rural Self-Government Act, 1921	...	...	...	...	44
--	-----	-----	-----	-----	----

## PREFACE.

1. This preface has been written with reference to all the Gazetteers of the series, not for this volume in particular.

2. All the tables and other statistics in Parts I and II of the B Volumes of the Gazetteers have been prepared in the offices of the respective districts from their own records; we have referred to the Deputy Commissioner for corrections in numerous cases in which an apparent error has been noticed in the Census Office, but we could not accept responsibility for the accuracy of the figures. The vital statistics in Part II have been noted as differing in many cases from the corresponding figures in the provincial sanitary or health reports, but have generally been allowed to stand as submitted by the Deputy Commissioner.

3. Part III, which was also prepared in the District offices, is probably correct as a rule so far as it relates to the Census of 1921 and within the normal range of error of such a tabulation. There are doubtlessly a few errors still remaining in some districts in the list of existing village-tracts. The names of some village-tracts have no doubt been omitted and the corresponding population assigned to some other village-tracts; while on the other hand some hamlets which form only parts of village-tracts may have been listed as separate village-tracts. But persistent efforts have been made in the Census Office to remove these defects, and district officers have generally seconded these efforts willingly; the residue of error is a result of the defects in the records of village-tracts in most districts to which reference was made in the preface to the 1911 edition of this Gazetteer. The entries in the column 19 of the tables of Part III must always be regarded as approximate unless all the serial numbers of the table of 1911 are accounted for; efforts were made to get this column as correct as possible, but it would hardly be possible to achieve finality and in some localities it had to be given up. In many cases it has been reported that the village-tract represented by some name in the 1911 edition could not be discovered; but generally if a blank is shown in this column it may be supposed that the village-tract has been formed by the subdivision of some tract of 1911. In any particular case in which further enquiry is necessary it is suggested that an examination of the *Kwin* maps of the Land Records Department and of the corresponding assessment roll (which are required to

be divided according to the tracts of the headman who collect the revenue), will furnish the required information if carried through a series of years.

4. It should be noted that in Part III the columns for Christians include, besides persons of all races professing the Christian religion, all Europeans and Anglo-Indians whether they professed that religion or not.

5. The term *Normal Civil Population* used in Part III of the book is defined in Chapter II of the Census Report of 1921 and includes all the population of the town or ward except the classes separately shown in the table, such as military police or travellers. The staffs of hospitals, jails, etc., are counted as normal civil population although the in-patients, prisoners, etc., are not.

6. Slip-copying Register A of the Census of 1921, which is preserved in the record-room of each district, gives information similar to that of Part III of this volume for every hamlet in each village-tract.

S. GRANTHAM,

*Superintendent of Census Operations, Burma (1921).*

MAUNG LAT,

*Assistant Superintendent of Census Operations, Burma (1921).*



# TAVOY DISTRICT.

## PART I.—GENERAL INFORMATION.

### INTRODUCTION.

**Tavoy.**—A district in the Tenasserim Division of Lower Burma, lying between  $13^{\circ} 16'$  and  $15^{\circ} 6'$  N. and  $97^{\circ} 46'$  and  $99^{\circ} 12'$  E. Its area is 5,308 square miles, and its population was:—

1872	...	71,827
1881	..	84,988
1891	...	94,921
1901	...	109,979
1911	...	135,293
1921	...	156,786

The District has no Administrative Subdivisions. The administrative townships in existence on the 1st April 1922 are shown in the statement on the next page.

These arrangements were in force at the time of the Census of 1901 and had not been changed since.

STATEMENT A.—Administrative Subdivisions (1st April 1922).

NOTE.—If the headquarters town is not shown in column 1 or 2 it bears the same name as the subdivision or township respectively.

Township.	Area in square miles.	Number of Towns under the Towns Act.	Number of Village-tracts.	Number of Villages.		Population. (Census of 1921 in ordinary type, Census of 1911 in italics.)			
				Exceeding 100 houses.	40 to 99 houses.	Persons.	Males.	Females.	Persons per square mile.
1	2	3	4	5	6	7	8	9	10
Yebyu ... ..	1,602	...	4 <sup>1</sup>	8	22	21,152 <i>17,132</i>	11,653	9,499	13
Tavoy ... ..	2,412	1	3 <sup>8</sup>	14	24	46,888 <i>39,222</i>	24,826	22,062	19
Launglon ... ..	313	...	5 <sup>2</sup>	36	38	47,151 <i>41,081</i>	23,670	23,483	151
Thayetchaung ... ..	981	...	4 <sup>8</sup>	25	39	41,093 <i>37,858</i>	20,845	20,748	42
Total ... ..	5,308	1	179	83	123	156,786 <i>135,293</i>	80,994	75,792	30

STATEMENT B.—Administrative Towns (1st April 1922).

Name of Town.	M = Municipality. N = Notified Area. T = Towns Act in force. L = Town under the Lower Burma Town and Village Lands Act.				Latest Notification of Boundaries.				Certain Acts in force.					
	M.	N.	T.	L.	Act under which issued.	Department.	No.	Date.	A.	B.	H.	P.	V.	V.A.
1	2	3	4	5	6	7	8	9	10	11	12	13	14	15
Tavoy ... ..	M	...	...	...	Burma Municipal Act of 1898.	Municipal and Local.	104	29-3-21	A	...	H	P	V	VA

( 3 )

STATEMENT C.—*Distribution of Urban Population (Census of 1921.)*

NOTE.—Each constituent village-tract is described by the number and name by which it is described (in its proper township) in Part III of this volume, where the population of the *whole* village-tract is shown; in the table below only that portion of its area or population is shown which belongs to the portion of the village-tract which has an urban character. Village-tracts for which only a part of the population is shown are distinguished in column 4 by an asterisk\*. Inmates of jails, reformatories, hospitals, lunatic asylums, leper asylums; military police; travellers in trains or boats or in camps and similar classes of adventitious population are omitted throughout.

Township.	Urban Area.			1. Towns Act in force. 2. Village Act in force. 3. Town under the Town and Village Lands Act.	Area in		Number of Occupied Houses.	Census of 1921.			Persons Per acre.
	Name.	Constituent Village-tracts, etc.			Squares miles.	Acres.		Population.			
		No.	Name.					Persons.	Males.	Females.	
1	2	3	4	5	6	7	8	9	10	11	12
Launglon ...	Launglon ...	1	Launglon* ...	2	'17	107	382	1,723	881	842	16'10
	Minyat ...	...	...	2	'52	331	499	2,733	1,522	1,411	8'25
		34	Minyat* ...	2	'35	222	298	1,518	776	782	6'84
		31	Insaub* ...	2	'17	109	201	1,215	586	629	11'15
	Thagyettaw ...	8	Thagyettaw* ...	2	'13	84	206	1,089	536	553	12'06
	Yebyu ...	...	.....	2	'88	566	392	2,162	1,082	1,083	3'82
		13	Yebyu* ...	2	'75	480	237	1,354	679	675	2'82
	14	Kadetngs-tein ...	2	'13	86	155	811	403	408	9'43	
Tavoy ...	Tavoy ...	...	Municipality ...	1	4'47	2,861	5,125	26,082	13,356	13,626	9'43
	Kanaingda ...	7	Kanaingda ...	2	'49	311	304	1,548	741	804	4'97
Thayetchaung..	Nyaungzin ...	7	Nyaungzin ...	2	'35	227	506	2,532	1,274	1,268	11'15
	Thayetchaung ...	...	.....	2	'03	407	366	1,749	849	900	4'29
		1	Thayetchaung* ...	2	'33	215	248	1,145	576	569	5'32
	12	Kyauemyaung* ...	2	'30	192	118	604	273	331	3'14	
Total for eight Urban Areas ...					9'68	6,198	7,780	40,521	20,034	20,487	6'54

STATEMENT D.—Urban Population Classified by Religion (Census of 1921).

NOTE.—See the note printed above Statement C.

Urban Area,		Total Population,			Buddhists,		Animists,		Hindus,		Mahomedans,		Christians,		Others.			
Name.	Constituent Village-tracts.		Persons.	Males.	Females.	M.	F.	M.	F.	M.	F.	M.	F.	M.	F.	M.	F.	
	No.	Name.																
2	3	4	5	6	7	8	9	10	11	12	13	14	15	16	17	18	19	
Launglon	...	1	Launglon*	1,723	881	842	833	816	3	...	8	4	33	17	4	5	...	...
Minyat	...	...	...	2,733	1,322	1,411	1,302	1,411	2	...	18	...	...	...	...	...	...	...
		34	Minyat* ...	1,518	736	782	720	782	...	...	16	...	...	...	...	...	...	...
		31	Insauk* ...	1,215	586	629	582	629	2	...	2	...	...	...	...	...	...	...
Thagyettaw	...	8	Thagyettaw*	1,089	536	553	533	553	...	...	...	...	1	...	2	...	...	...
Yebyu	...	...	...	2,165	1,082	1,083	1,078	1,082	2	...	1	...	...	...	...	...	1	1
		13	Yebyu* ...	1,354	679	675	675	674	2	...	1	...	...	...	...	...	1	1
		14	Kadetnge- tein.	811	403	408	403	408	...	...	...	...	...	...	...	...	...	...
Tavoy	...	...	Municipality	26,982	13,356	13,626	10,844	12,433	594	140	946	195	937	656	227	196	8	6
Kanaingda	...	7	Kanaingda	1,548	714	804	725	800	...	...	2	...	17	4	...	...	...	...
Nyaungzin	...	7	Nyaungzin	2,532	1,264	1,268	1,261	1,268	1	...	...	2	...	...	...	...	...	...
Thayetchaung	...	...	...	1,749	819	900	842	900	3	...	2	...	2	...	...	...	...	...
		1	Thayet- chaung* ...	1,145	576	569	571	569	1	...	2	...	2	...	...	...	...	...
		12	Kyauk- myaung.	604	273	331	271	331	2	...	...	...	...	...	...	...	...	...
Total for eight Urban Areas			...	40,521	20,034	20,487	17,418	19,263	405	140	977	199	992	677	233	201	9	7

( 2 )

STATEMENT E.—Post Offices, Bazaars, Hospitals, etc.

Township.	Town or Village-tract.		Railway Station.	Steamer Jetty.	Post Office.	Telegraph Office.	Bazaar.	Forest Revenue Station.	Hospital (Beds) or Dispensary.	Principal Schools			Rest-houses.				Remarks.
	Serial No. in Part III.	Name.								Boys.	Girls.	Kind.	Number of Bed rooms.	Furnishing.	Road.*	Steamer Route.	
1	2	3	4	5	6	7	8	9	10	11	12	13	14	15	16	17	18
Launglón ...	1	Launglón ...	...	...	P.O.	...	O.B.	...	...	...	...	P.W.	2	B.	10	...	* Zalut Kyauknimaw Forest Dept. Road.
	8	Thagyettaw ...	...	...	...	...	...	...	...	...	...	P.W.	2	B.	10	...	
	13	Lower Yebyu ...	...	...	...	...	...	...	...	...	...	P.W.	2	B.	10	...	
	27	Sanhian ...	...	...	...	...	...	...	...	...	...	D.	2	Ni	16	...	
	52	Kyauknimaw ...	...	...	...	...	...	...	...	...	...	F.	1	A.	7	...	
Tavoy ...	...	Tavoy Town ...	...	J.	P.O.	T.O.	B.B.	F.R.S.	D.	M.V.S. (Mixed)	...	P.W.	4	B.	21	...	Maintained by Municipality.
	...	...	...	...	...	...	...	...	...	E.T.S. (Mixed)	...	C.	3	B.	11	...	
	...	...	...	...	...	...	...	...	...	G.H.S.	...	P.W.	4	C.	1	...	
	...	...	...	...	...	...	...	...	...	A.B.M. (Mixed)	...	Dk.	...	B.	1	...	
	...	...	...	...	...	...	...	...	...	...	A.B.G. (Mixed)	...	...	Various	...	...	
	5	Kyaukyat (Pauktaing),	...	...	...	...	...	F.R.S.	...	...	A.B.K. (Mixed)	...	...	...	...	...	
	40	Hermyingyi ...	...	...	P.O.	T.O.	...	...	...	...	...	P.W.	2	B.	2	...	
	17	Kyaukmedaung ...	...	...	P.O.	T.O.	...	...	...	...	...	P.W.	2	B.	1	...	
	13	Myitta ...	...	...	...	T.O.	...	...	...	...	...	...	...	...	...	...	
	22	Wagon ...	...	...	...	...	...	...	...	...	...	...	P.W.	2	B.	1	
Thayetchaung	29	Putletto ...	...	...	...	...	...	...	...	...	...	P.W.	2	B.	1	...	
	31	Vaungdaw ...	...	...	...	...	...	...	...	...	...	P.W.	2	B.	1	...	
	1	Thayetchaung ...	...	...	P.O.	...	O.B.	...	...	D.V.S. (Mixed)	...	P.W.	3	B.	14	...	
	32	Mindat ...	...	...	...	...	...	...	...	...	...	P.W.	3	B.	4 (a)	Bungalow at Wazunchaung.	
	51	Pe ...	...	...	...	...	...	...	...	...	...	P.W.	2	B.	4 (a)	...	
	46	Kanyinchaung ...	...	...	...	...	...	...	...	...	...	P.W.	2	B.	4 (b)	...	
	25	Pyinbyuayyi ...	...	...	...	...	...	...	...	...	...	P.W.	2	B.	4 (b)	...	
	17	Pandaw ...	...	...	...	...	...	...	...	...	...	P.W.	2	B.	4 (a)	...	
	10	Thingyun ...	...	...	...	...	...	...	...	...	...	P.W.	2	B.	4 (a)	Bungalow at Sinbyuypin.	
	36	Taungbyauk ...	...	...	...	...	...	...	...	...	...	P.W.	2	B.	4 (a)	...	
Yebyu ...	30	Yange ...	...	...	...	...	...	...	...	V.B.S. (Mixed)	...	F.	1	A.	4 (b)	...	
	1	Yebyu ...	...	...	P.O.	...	...	...	...	...	...	...	...	...	...	7	
	42	Konbauk ...	...	...	P.O.	T.O.	...	...	...	...	...	...	...	...	...	9	
	82	Nankye ...	...	...	...	...	...	...	...	...	...	P.W.	2	B.	9	...	
												P.W.	2	B.	9	...	
												P.W.	2	B.	9	...	
												P.W.	2	B.	9	...	

( 9 )

Yebyu ...	7	Talaingya ...	...	...	...	...	...	...	...	...	...	P.W.	2	B.	13	...	Bungalow at Thitka- dochaung.
	35	Kaleinaung ...	...	...	...	...	...	...	...	...	...	P.W.	2	B.	8	...	Bungalow at Yebon.
	34	Kyaukshat ...	...	...	...	...	...	...	...	...	...	P.W.	2	B.	8	...	
	39	Yabu ...	...	...	...	...	...	...	...	...	...	F.	2	A.	...	...	Bungalows at Kin- chaung, Lawthaing, Yabu and Mayan- chaung.
												F.	1	A.	...	...	
												F.	2	Ni	...	...	Footpath along the Tavoy-Moulmein Telegraph line.
												F.	1	A.	...	...	Do.
	37	Natkyizin ...	...	...	...	...	...	...	...	...	...	F.	2	A.	...	...	Do.
												F.	2	A.	...	...	Migyaunglaung- Yabu cart road.
	41	Mintha Sakan ...	...	...	...	...	...	...	...	...	...	F.	2	A.	...	...	Bungalow at Paung- san-Kinchaung.
	36	Eindaraza ...	...	...	...	...	...	...	...	...	...	F.	2	A.	...	...	Paung-san cart road.
	40	Migyaunglaung ...	...	...	...	...	...	...	...	...	...	F.	2	A.	...	...	Foot path along the Tavoy-Moulmein Telegraph line.
												F.	2	A.	...	...	
	21	Nabule ...	...	...	...	...	...	...	...	...	...	F.	2	A.	...	...	

\* The numbers in column 16 are references to entries in Statement F.

COLUMN 8.

B.B. = Bazaar equipped with buildings.  
O.B. = An open space on which temporary stalls are placed not associated with a B.B. Bazaar.

COLUMNS 11 AND 12.

A.B.M. = American Baptist Mission Vernacular School.  
M.V.S. = Municipal Vernacular School.  
E.T.S. = Elementary Training School.  
G.H.S. = Government Anglo-Vernacular High School.  
A.B.G. = American Baptist Mission Anglo-Vernacular Girls' School.  
A.B.K. = American Baptist Mission (Karen) Anglo-Vernacular School.  
D.V.S. = District Cess Fund Vernacular School.  
V.B.S. = Vernacular Buddhist School.

ABBREVIATIONS.

COLUMN 13.

C. = Circuit House.  
Dk. = Dāk Bungalow.  
P.W. = P.W.D. Bungalow.  
D. = District Bungalow.  
F. = Forest Bungalow.

COLUMN 15.

A. = Bungalow with a minimum of heavy furniture without crockery.  
B. = Bungalow with a minimum of heavy furniture with crockery.  
C. = Bungalow with linen and crockery.

STATEMENT F.—Roads (1st April 1922).

Name of Road.	Length (miles).	Main District or Village Road.	Surfaced width (feet).	Class of surfacing.	Bridging permanent or temporary.	Ruling grade: 1 in.	Origin of mileage measurements.	Rest-houses and their distance from origin of measurements.	Remarks.
1	2	3	4	5	6	7	8	9	10
1. Tavoy-Wazunchaung.	42.66	M	10	Metal ...	2/35 P. 2/35, 6/40 T.	1 in 20	Tavoy Court House.	Tavoy (1 mile); Kvauk-medaung (27 miles); Wagon (21 miles); Wazunchaung (42 miles).	Proposed to complete permanent bridging and widen to 16 feet metalling.
2. Pagaye-Hermyingyi.	11.125	M	10	Metal to mile 5.5 Gravel mile 5.5 to mile 11.	T	1 in 20	Do. ...	Hermyingyi (21 miles) ...	Proposed to complete metal surfacing and build permanent bridges.
3. Pauktaing Branch Road.	1.66	M	10	Metal ...	P	Level	Junction with Kyetsabyin Jetty Road.	...	To be metalled 14 feet wide.
4. (a) Tavoy-Mindat	39.25	M	10	Gravel ...	T	1 in 20	Tavoy Court House.	Thingyun (10 miles); Thayetchaung (18 miles); Pyinbyugyi (29 miles); Mindat (39 miles).	Metalled to mile 6/4, permanent bridges to mile 6/4. To be part of Tavoy-Mergui Grand Trunk road.
4. (b) Mindat-Pe ...	20.50	M	10	Gravel ...	T	1 in 20	Do. ...	Kanyinchaung (51 miles); Pe (60 miles).	To be part of Tavoy-Mergui Grand Trunk road.



5. Sinbyubin Branch Road.	2'66	M	10	Gravel ...	T	Level	Tavoy Court House.	Sinbyubin (91 miles) ...	...
6. Sonsinpya Branch Road.	2'60	M	10	Gravel ...	T	1 in 20	Do. ..	...	Incompleted road to Taungbyauk.
7. Tavoy-Talaingya	18—25	M	10	Gravel ...	T	1 in 20	Do. ...	Upper Yebyu (13 miles)...	Metalled to mile 7/4, to be part of Moulmein Tavoy Grand Trunk Road.
8. Nankye-Kalein-aung.	16—125	M	10	Gravel ...	T	1 in 20	Nankye ...	Yeboon (8 miles); Kalein-aung (16 miles).	To be part of Moulmein-Tavoy Grand Trunk Road.
9. Nankye-Kanbauk	20'25	M	10	Gravel ..	T	1 in 20	Do. ...	Nankye (6 miles); Pachaung (8 miles); Kanbauk (20 miles).	Nil.
10. Kamyawgin-Zalut.	34'125	M	10	Gravel ...	T	1 in 20	Tavoy Court House.	Launglon (14 miles); Lower Yebyu (20 miles); Thagyettaw (32 miles); Maungmagan (10 miles)	To be permanently bridged.
11. Tavoy-Maungmagan.	10'25	M	10	Laterite ...	T	1 in 20	Do. ..	Maungmagan (10 miles)	To be permanently bridged.
12. Myitta Branch Road.	2'66	M	10	Gravel ...	T	1 in 20	Do. ...	...	To be permanently bridged. A bungalow to be provided at Myitta (35).
13. Thikado Branch Road.	4.5	M	10	Gravel ...	T	1 in 20	Do. ...	Thikadochaung (23 miles)	Nil.
14. Wazunchaung-Paungdaw Mule Track.	5'6	M	6	Gravel ...	Permanently bridged.	1 in 10	Wazunchaung Police Station.	Paungdaw (5 miles)	Nil.
15. Myitta to Siamese Frontier.	66'5	...	2	Gravel ...	...	1 in 8	...	...	Foot path along Telegraph line.

\* P=Permanent, T=Temporary.

STATEMENT F.—Roads (1st April 1922)—concluded.

Name of Road.	Length (miles).	Main, District or Village Road.	Surfaced width (feet).	Class of surfacing.	Bridging permanent or temporary.	Ruling grade: 1 in.	Origin of mileage measurements.	Rest-houses and their distance from origin of measurements.	Remarks.
1	2	3	4	5	6	7	8	9	10
16. Launglon-Sanhlan	5.5	M	10	Gravel ...	T	1 in 18	Junction with No. 10 at mile 14/75.	Sanhlan (5 miles) ...	To be permanently bridged.
17. Kyaukyat-Shanmadwin.	3.5	M	8	Gravel ...	T	1 in 15	Junction with No. 4 (a) at mile 1/87.	...	Do.
18. Moti-Kya-in ...	2.5	D	8	Gravel ...	T	1'18	Junction with No. 4 (a) at mile 6'12.	...	Do.
19. Nyaungzin-Kyain	1	D	8	Gravel ...	T	Level	Junction with No. 4 (a) at mile 7'87.	...	Do.
20. Kamyawgin-Khamaungdaung.	1'66	D	8	Gravel ...	T	1'20	Tavoy Court House.	...	To be permanently bridged. To be part of Tavoy-Nabule road.
21. Lower Yebyu-Kadetnge Seik.	1'66	D	10	Gravel ...	T	Level	Junction with No. 10 at mile 21	...	To be permanently bridged.
22. Minyat-Yahaungwa (Minyat Ferry Road).	2'25	D	10	Metal ...	P	Level	Junction with No. 10 at mile 8'125.	...	One bridge remains to be built in permanent materials
23. Inzauk Ferry Road.	1'0	D	10	Metal ...	P	Level	Junction with No. 10 at mile 0'125.	...	

\* P = Permanent. T = Temporary.

STATEMENT G.—*Railway Stations.* Nil.STATEMENT H.—*Steamer Routes.*I. *Weekly*—

1. B.I. Steamer arrives at Tavoy Anchorage, every Monday from Rangoon *en route* to Mergui and leaves for Rangoon on every Wednesday.

II. *Fortnightly*—

2. B.I. Steamer arrives at Tavoy Anchorage on Wednesday from Rangoon *en route* to Mergui ports and calls at Tavoy Anchorage on return journey on following Thursday week.
3. B.I. Steamer arrives at Tavoy Anchorage on Thursday from Moulmein *via* Ye and leaves the same day for Penang *via* Mergui. It returns on the following Thursday week.
4. A Chinese Steamer arrives from Penang once every Sixteen days and leaves for Penang *via* Moulmein with tide.

STATEMENT J.—*FERRIES (1st April 1922).*

Ferry.	River crossed.	Township.
(1)	(2)	(3)
Yebyu-Kyaukkanya ...	Tavoy River ...	Yebyu.
Kamyawgin-Mindat ...	Do. ...	Launglon.
Inzauk-Tavoy ...	Do. ...	Do.
Inwun-Minyat ...	Do. ...	Do.
Chaungwabyin ...	Taungbyauk stream ...	Thayetchaung.
Sinzeik-Teindwin ...	Tavoy river ...	Tavoy.
Pyinpyugyi ...	Pyinpyugyi stream ...	Thayetchaung.
Shindawe ...	Tavoy river ...	Yebyu.

STATEMENT K.—*Rates of Wages.*

The average monthly wages for 1921-22 were as follows :—

(a) An able-bodied agricultural labourer, Rs. 30; (b) A cooly, Rs. 30; (c) A carpenter, Rs. 45; (d) A blacksmith, Rs. 30.

The average hire of a cart is Rs. 5 per day.

STATEMENT L.—POLICE STRENGTH AND DISTRIBUTION. (1st April 1922.)

Township.	Station or Post		Civil Police.					Military Police.				
	Situation.	Class.	Inspec- tors.	Sub-Ins- pector.	Head Constables.	Constables.	Total.	Subadars and Jemadars.	Havildars.	Naiks.	Sepoys.	Total.
1	2	3	(8a)	4	5	6	7	8	9	10	11	12
Yebyu ...	Yebyu ...	P. S., M. P.	...	1	5	7	13	...	1	...	15	16
	Kanbauk ...	P. S.	...	1	4	7	12	...	...	...	...	...
	Kaleinaung ...	O. P.	...	...	1	4	5	...	...	...	...	...
	DISTRICT STAFF, TAVOY.	...	6	7	2	27	38	...	...	...	...	...
Tavoy ...	Reserve for sick and on leave and Training Depôt.	...	...	3	...	43	46	...	..	...	...	...
	Tavoy ...	P. S. M. P.	...	4	10	60	74	2	4	3	88	97
	Kyaukmaw ...	P. S.	...	2	6	24	32	...	...	...	...	...
	Letwegyun ...	P. S.	...	1	5	12	18	...	...	...	...	...
	Payaye ...	P. S.	...	1	4	7	12	...	...	...	...	...
	Hermyingyi ...	P. S.	...	1	3	8	12	...	...	...	...	...
	Kyaukmedaung ...	P. S.	...	1	3	8	12	...	...	...	...	...
	Wazunchaung ...	O. P.	...	...	1	4	5	...	...	...	...	...
Launglon ...	Launglon ...	P. S.	...	2	8	14	24	...	...	...	...	...
	Thagyettaw ...	O. P.	...	...	1	4	5	...	...	...	...	...
	Thaukkyabyin*	P. S.	...	1	3	7	11	...	...	...	...	...
Thayetchaung	Thayetchaung ...	P. S.	...	1	6	15	22	...	...	...	...	...
	Chaungwabyin ...	P. S.	...	1	5	10	16	...	...	...	...	...
	Pe ...	O. P.	...	...	1	4	5	...	..	...	...	...
	Total ...	...	6	27	68	265	366	2	5	3	103	183

NOTE.—Thaukkyabyin Police-station has been sanctioned for one year with effect from 15th December 1921, but will probably be made permanent.

Military Police Post=(M.P.)

Police-station=(P.S.) Out Post=(O.P.)

## PART II.—EXTRACTS FROM ANNUAL RETURNS.

### TABLE I.—TEMPERATURE AND RAINFALL, TAVOY TOWN.

Year.	Average maximum Temperature during			Average minimum Temperature during			Rainfall in Inches.																											
	April.	July.	Decem-ber.	April.	July.	Decem-ber.	Jann-ary.	Febru-ary.	March.	April.	May.	June.	July.	August.	Septem-ber.	October.	Novem-ber.	Decem-ber.	Total.															
1	2	3	4	5	6	7	8	9	10	11	12	13	14	15	16	17	18	19	20															
1911 ...	91'9	81'90	90'90	73'08	74'32	70'59	...	0'05	...	5'19	13'98	40'56	65'23	47'26	27'77	17'39	0'19	'02	217'64															
1912 ...	}	N	o	t	a	v	a	i	l	a	b	l	e	e	r	a	v	a	i	l														
1913 ...																					...	0'43	0'79	6'80	0'23	12'32	51'64	37'79	49'42	21'92	5'83	4'90	'01	186'08
1914 ...																					...	0'02	0'98	3'56	0'24	11'30	27'93	76'64	61'52	27'88	7'19	1'20	...	218'46
1915 ...																					...	0'00	0'00	0'66	2'25	12'73	50'68	72'78	44'32	21'86	6'88	1'99	0'74	214'89
1916 ...	94'70	82'60	83'80	73'60	74'70	62'40	0'57	...	1'88	2'09	31'52	18'48	42'10	52'15	26'32	23'25	1'21	0'38	199'95															
1917 ...	95'10	85'70	85'30	74'10	74'10	65'10	...	...	1'32	0'30	10'10	56'53	28'36	46'96	40'80	13'97	2'53	2'40	203'27															
1918 ...	90'10	82'60	86'70	74'40	73'20	62'90	1'69	...	3'14	0'03	8'58	39'53	49'88	43'07	35'34	29'31	0'50	...	211'07															
1919 ...	92'60	83'80	89'0	71'30	71'60	64'10	...	...	2'86	2'69	37'71	39'39	40'75	58'86	32'74	5'61	2'07	1'33	224'01															
1920 ...	96'01	84'70	89'70	76'01	74'50	67'10	...	...	...	1'58	13'60	76'86	45'58	56'35	17'78	4'37	1'39	0'53	218'04															
1921 ...	96'70	83'10	87'90	74'30	73'70	69'10	...	0'09	1'89	0'30	14'88	58'67	49'49	48'08	48'33	6'56	1'36	0'47	230'10															
1922 ...	94'70	83'60	87'60	74'60	74'80	63'10	...	...	2'44	1'57	22'47	34'37	42'69	57'88	57'54	2'72	0'41	0'10	222'19															
1922 ...																																		
1923 ...																																		
1924 ...																																		
1925 ...																																		
1926 ...																																		
1927 ...																																		
1928 ...																																		
1929 ...																																		
1930 ...																																		
1931 ...																																		

TABLE III.—VITAL STATISTICS.

Year.	Population.	Total number of births registered.	Ratio of births per thousand.	Total number of deaths registered.	Ratio of deaths per thousand.	Percentage of deaths under five years to total deaths.	Deaths per 1,000 from				
							Small-pox.	Fever.	Dysentery and Diarrhœa.	Respiratory Diseases.	All other causes.
1	2	3	4	5	6	7	8	9	10	11	12
1911	135,293	4,936	36.48	2,551	18.86	6.70	.01	11.60	1.13	.99	4.90
1912	135,293	5,895	43.57	2,897	21.41	8.26	.17	13.84	1.26	1.06	4.78
1913	135,293	5,570	41.17	2,840	20.99	8.99	...	14.74	.81	.81	4.35
1914	135,293	5,871	43.39	2,889	21.35	8.09	...	13.52	1.06	1.60	4.87
1915	135,293	6,047	44.70	3,501	25.88	6.54	.01	14.28	2.74	1.57	6.45
1916	135,293	5,148	38.05	3,426	25.32	6.46	.05	14.01	2.66	1.52	5.86
1917	135,293	6,245	46.16	4,605	34.04	6.49	...	22.68	2.41	1.37	7.18
1918	135,293	4,935	36.47	5,379	39.76	6.22	...	28.90	2.04	1.47	6.97
1919	135,293	5,223	38.60	4,802	35.49	5.17	.01	28.74	2.51	.83	7.55
1920	135,293	5,949	43.97	3,550	26.24	14.62	...	17.69	.92	.69	6.70
1921	156,786	5,842	30.26	4,217	26.90	9.76	...	16.00	1.52	1.12	8.25
1922	...										
1923	...										
1924	...										
1925	...										
1926	...										
1927	...										
1928	...										
1929	...										
1930	...										
1931	...										

The figures in column 2 for 1921 are from the census of that year, and for earlier years from the census of 1911.

TABLE IV.—AGRICULTURAL STATISTICS.

Year.	Area in Acres.		Of Area cultivated.		Area under principal Crops.				Agricultural Stock.	
	Total.	Cultivated.	Irrigated.	Non-irrigated.	Rice.	Betel nuts.	Doorians.	Dhania.	Cattle.	Buffaloes.
1	2	3	4	5	6	7	8	9	10	11
1911-12	3,397,120	134,562	920	132,642	98,217	4,633	4,998	7,484	20,550	27,634
1912-13	3,397,120	139,750	963	138,787	101,033	4,571	5,853	7,376	24,402	32,146
1913-14	3,397,120	140,826	995	139,831	103,524	4,425	...	7,530	18,715	31,432
1914-15	3,397,120	143,897	834	143,063	103,570	4,449	...	7,825	21,842	29,809
1915-16	3,397,120	144,285	894	142,391	103,166	4,396	..	7,891	23,941	29,687
1916-17	3,397,120	146,089	840	145,249	102,474	4,536	...	7,966	22,512	32,605
1917-18	3,397,120	145,350	976	144,374	100,941	4,523	...	7,951	24,319	31,963
1918-19	3,397,120	144,874	871	144,003	99,898	4,533	..	7,957	22,040	31,847
1919-20	3,397,120	141,974	897	141,077	98,930	3,962	...	7,942	21,933	31,860
1920-21	3,397,120	145,658	878	144,780	101,025	4,279	...	7,820	22,492	31,120
1921-22	...									
1922-23	...									
1923-24	...									
1924-25	...									
1925-26	...									
1926-27	...									
1927-28	...									
1928-29	...									
1929-30	...									
1930-31	...									

TABLE V.—OUTTURN OF CROPS.

[Outturn in American Notation, taking 100 to represent a Normal Crop.]

Year.	Rice.	Betel nuts.	Doorians.	Dhani.			
1	2	3	4	5	6	7	8
1911-12	93	...	...	...	...	...	...
1912-13	106	...	...	...	...	...	...
1913-14	88	...	..	...	...	...	...
1914-15	94	...	...	...	...	...	...
1915-16	93	...	...	...	...	...	...
1916-17	94	...	...	...	...	...	...
1917-18	93	...	...	...	...	...	...
1918-19	85	...	...	..	...	...	...
1919-20	78	...	...	...	...	...	...
1920-21	94	...	...	...	...	...	...
1921-22	...						
1922-23	...						
1923-24	...						
1924-25	...						
1925-26	...						
1926-27	...						
1927-28	...						
1928-29	...						
1929-30	...						
1930-31	...						





TABLE VIII.—FOREST STATISTICS.

Year.		Area in square miles of reserved forests.	Area in square miles of unreserved forests.	Forest revenue.	Forest expenditure.
1	2	3	4	5	
			Rs.	Rs.	
1911-12	...	779	3,003	25,584	44,060
1912-13	...	778	2,846	26,364	42,757
1913-14	...	806	4,293	36,378	45,231
1914-15	...	806	4,292	30,591	46,847
1915-16	...	806	4,263	35,283	53,276
1916-17	...	815	4,249	44,924	50,902
1917-18	...	815	4,249	47,275	54,472
1918-19	...	815	4,252	87,510	70,630
1919-20	...	815	4,252	58,129	64,892
1920-21	...	814	4,253	33,137*	95,589*
1921-22	...				
1922-23	...				
1923-24	...				
1924-25	...				
1925-26	...				
1926-27	...				
1927-28	...				
1928-29	...				
1929-30	...				
1930-31	...				

\* These figures represent revenue and expenditure for nine months only as the Forest year in 1920-21 ended on 31st March 1921 and not on 30th June as in previous years.

TABLE IX.—QUANTITY AND VALUE OF MINERALS PRODUCED.

Year.	Coal.		Iron.		Gold.		Wolfram.		Petroleum.		Salt.		Jade.		Tin.	
	Amount.	Value.	Amount.	Value.	Amount.	Value.	Amount.	Value.	Amount.	Value.	Amount.	Value.	Amount.	Value.	Amount.	Value.
1	2	3	4	5	6	7	8	9	10	11	12	13	14	15	16	17
		Rs.		Rs.		Rs.	Tons.	Rs.		Rs.	Mds.	Rs.		Rs.	Cwt.	Rs.
1911	...	...	...	...	...	...	1,091	10,91,000	...	...	76,841	1,57,284	...	...	...	...
1912	...	...	...	...	...	...	1,499	14,99,000	...	...	77,357	1,58,743	...	...	1,258	119,496
1913	...	...	...	...	...	...	1,508	2,02,000	...	...	55,236	1,24,569	...	...	21	1,835
1914	...	...	...	...	...	...	1,631	34,98,495	...	...	45,288	1,25,485	...	...	...	...
1915	...	...	...	...	...	...	2,115	45,36,675	...	...	70,196	2,00,717	...	...	...	60
1916	...	...	...	...	...	...	3,934	61,58,783	...	...	72,716	2,07,922	...	...	800	60,000
1917	...	...	...	...	...	...	3,697	76,31,906	...	...	72,592	1,65,600	...	...	1,762	165,238
1918	...	...	...	...	...	...	3,636	91,62,490	...	...	95,305	2,26,349	...	...	2,170	268,541
1919	...	...	...	...	...	...	2,889	44,15,732	...	...	89,176	2,03,433	...	...	10,160	764,380
1920	...	...	...	...	...	...	1,808	40,22,080	...	...	91,035	1,78,277	...	...	162,963	941,170
1921	...	...	...	...	...	...	966	48,24,3	...	...	38,810	75,194	...	...	10,256	599,976
1922	...	...	...	...	...	...										
1923	...	...	...	...	...	...										
1924	...	...	...	...	...	...										
1925	...	...	...	...	...	...										
1926	...	...	...	...	...	...										
1927	...	...	...	...	...	...										
1928	...	...	...	...	...	...										
1929	...	...	...	...	...	...										
1930	...	...	...	...	...	...										
1931	...	...	...	...	...	...										



TABLE X.—STATISTICS OF VALUE OF TRANS-FRONTIER TRADE.

Year.	Imports.		Exports.		Grand Total, Imports and Exports.
	Merchandise.	Treasure.	Merchandise.	Treasure.	
1	2	3	4	5	6
	Rs.	Rs.	Rs.	Rs.	Rs.
1911-12 ... ..	38,569	30,499	17,201	32,789	1,19,058
1912-13 ... ..	18,813	5,434	15,432	4,340	44,019
1913-14 ... ..	41,465	4,856	19,701	5,782	71,804
1914-15 ... ..	1,12,426	30,487	65,976	21,120	2,30,009
1915-16 ... ..	2,944	1,540	2,140	505	7,129
1916-17 ... ..	2,172	604	2,348	1,645	6,769
1917-18 ... ..	4,868	400	4,409	592	10,269
1918-19 ... ..	8,206	885	5,991	970	16,052
1919-20 ... ..	9,990	1,875	2,768	1,625	16,258
1920-21 ... ..	3,650	1,319	5,070	840	10,879
1921-22 ... ..					
1922-23 ... ..					
1923-24 ... ..					
1924-25 ... ..					
1925-26 ... ..					
1926-27 ... ..					
1927-28 ... ..					
1928-29 ... ..					
1929-30 ... ..					
1930-31 ... ..					

TABLE XI.—ROAD STATISTICS.

Year.	Total Mileage of Roads (Metalled.)	Total Mileage of Roads (Unmetalled.)	Annual expenditure from Provincial Funds on		Annual Expenditure from Local Funds on		Total expenditure.
			Original works.	Repairs.	Original works.	Repairs.	
1	2	3	4	5	6	7	8*
			Rs.	Rs.	Rs.	Rs.	Rs.
1911-12 ...	59'73	149'87	57,736	1,16,213	3,818	2,873	1,80,640
1912-13 ...	57'48	152'12	31,820	1,42,665	809	4,031	1,99,325
1913-14 ...	64'32	152'37	76,374	54,242	...	4,236	1,34,852
1914-15 ...	66'96	148'53	48,222	24,847	7,057	7,578	87,705
1915-16 ...	70'96	201'67	2,55,083	1,32,146	2,944	4,507	3,74,680
1916-17 ...	*21'32	29'69	1,91,842	1,09,832	1,76,021	18,479	4,96,174
1917-18 ...	22'82	291'89	2,96,557	3,07,275	...	...	6,03,832
1918-19 ...	32'08	246'27	5,24,725	1,84,833	5,639	6,106	7,21,303
1919-20 ...	43'58	179'52	3,89,898	1,83,156	12,346	7,697	5,93,097
1920-21 ...	56'47	185'66	3,67,654	2,17,754	23,794	8,335	6,17,537
1921-22 ...							
1922-23 ...							
1923-24 ...							
1924-25 ...							
1925-26 ...							
1926-27 ...							
1927-28 ...							
1928-29 ...							
1929-30 ...							
1930-31 ...							

\* Roads in Tavoy District reclassified from 1916-17.



TABLE XIII.—LAND REVENUE.

Year.	Land Revenue proper.				Capitation-tax.				Fishery Revenue.				Miscellaneous Land Revenue.				Total land revenue collections.
	Area assessed in acres.	Demand.	Remissions.	Collections.	Number of persons assessed.	Demand.	Remissions.	Collections.	Demand.		Remissions.	Collections.	Receipts under Village Act.	Survey fees for potias.	Royalties and fees on minerals.	Other sources.	
									From net licenses.	From leased fisheries.							
									Rs.	Rs.							
1	2	3	4	5	6	7	8	9	10	11	12	13	14	15	16	17	18
1911-12	1,38,304	3,22,718	2,887	3,18,215	29,427	1,16,183	2,869	1,13,313	16,222	4,327	...	20,540	1,624	546	1,20,341	503	5,75,191
1912-13	1,41,124	3,23,430	283	3,22,818	29,522	1,16,096	1,712	1,15,050	19,772	6,665	...	26,444	833	241	1,05,152	1,073	5,71,611
1913-14	1,43,410	3,25,114	1,195	3,22,524	30,181	1,19,369	1,348	1,18,021	23,221	5,180	15	28,406	1,037	261	1,40,464	1,673	6,21,386
1914-15	1,45,186	3,28,303	1,274	3,27,096	30,621	1,25,670	1,334	1,24,336	21,079	5,182	...	26,861	849	302	79,841	1,435	5,60,720
1915-16	1,46,158	3,27,143	994	3,25,775	31,372	1,27,856	1,432	1,26,424	20,116	6,925	...	27,041	1,027	129	1,59,836	1,628	6,41,860
1916-17	1,43,403	3,25,987	498	3,25,115	31,981	1,28,835	1,544	1,27,291	17,238	4,895	...	22,133	860	20,173	2,78,780	1,936	7,76,288
1917-18	1,44,769	3,30,826	121	3,28,328	32,135	1,43,266	3,950	1,39,316	20,622	5,245	...	25,807	836	2,804	2,66,477	12,378	7,76,006
1918-19	1,42,540	3,25,578	2,002	3,21,989	35,548	1,42,822	2,662	1,40,162	20,433	7,555	25	27,993	1,775	888	3,00,361	2,702	7,95,840
1919-20	1,41,881	3,28,956	14,685	3,02,843	34,041	1,39,910	4,436	1,35,473	16,288	7,795	...	27,183	1,739	1,337	1,15,791	1,918	5,86,294
1920-21	1,46,293	3,38,006	4,597	3,23,213	33,825	1,38,415	5,257	1,33,959	24,451	4,853	...	29,004	1,927	709	86,759	13,979	5,88,550
1921-22	...																
1922-23	...																
1923-24	...																
1924-25	...																
1925-26	...																
1926-27	...																
1927-28	...																
1928-29	...																
1929-30	...																
1930-31	...																



TABLE XIV.—STAMP, INCOME-TAX AND EXCISE REVENUE.

Year.	Stamp Revenue.			Income-tax.			Excise Revenue.			
	Judicial stamps.	Non-judicial stamps.	Fines and penalties.	Number of assesses.	Demand.	Collections.	Liquor.		Opium.	
							Customs and Excise duty.	License fees.	License fees.	Sale of opium.
1	2	3	4	5	6	7	8	9	10	11
	Rs.	Rs.	Rs.		Rs.	Rs.	Rs.	Rs.	Rs.	Rs.
1911-12	...	...	...	...	...	...	...	...	...	...
1912-13	...	...	...	...	...	...	...	...	...	...
1913-14	...	...	...	...	...	...	...	...	...	...
1914-15	...	...	...	...	...	...	...	...	...	...
1915-16	...	...	...	...	...	...	...	...	...	...
1916-17	...	...	...	...	...	...	...	...	...	...
1917-18	...	...	...	...	...	...	...	...	...	...
1918-19	...	...	...	...	...	...	...	...	...	...
1919-20	...	...	...	...	...	...	...	...	...	...
1920-21	...	...	...	...	...	...	...	...	...	...
1921-22	...	...	...	...	...	...	...	...	...	...
1922-23	...	...	...	...	...	...	...	...	...	...
1923-24	...	...	...	...	...	...	...	...	...	...
1924-25	...	...	...	...	...	...	...	...	...	...
1925-26	...	...	...	...	...	...	...	...	...	...
1926-27	...	...	...	...	...	...	...	...	...	...
1927-28	...	...	...	...	...	...	...	...	...	...
1928-29	...	...	...	...	...	...	...	...	...	...
1929-30	...	...	...	...	...	...	...	...	...	...
1930-31	...	...	...	...	...	...	...	...	...	...

( 25 )

TABLE XV.—INCOME AND EXPENDITURE, DISTRICT CESS FUND.

Year.	Income.								Expenditure.							
	Provincial rates.	Slaughter-house licenses.	Cattle pound fees and fines.	Sale proceeds of unclaimed cattle.	Bazaar rents and bazaar stall rents.	Lease of tolls and ferries.	Other sources of income.	Total.	District Post charges.	Education.	Medical.	Conservancy.	Civil Works.	Other heads of expenditure.	Total.	
	1	2	3	4	5	6	7	8	9	10	11	12	13	14	15	16
	Rs.	Rs.	Rs.	Rs.	Rs.	Rs.	Rs.	Rs.	Rs.	Rs.	Rs.	Rs.	Rs.	Rs.	Rs.	Rs.
1911-12	...	30,348	...	322	82	80	3,003	131	33,966	...	7,320	3,445	...	15,913	4,338	31,016
1912-13	...	36,114	...	306	32	80	3,417	365	40,314	...	9,694	3,947	...	14,427	4,775	32,843
1913-14	...	29,177	...	228	70	101	5,307	1,257	30,140	...	10,414	3,978	...	8,085	3,098	27,375
1914-15	...	32,497	535	192	32	60	5,960	2,024	41,299	...	10,953	4,478	...	24,355	3,885	43,671
1915-16	...	27,444	760	278	41	60	3,959	2,01,675	2,34,217	...	12,958	4,827	...	13,639	4,382	42,806
1916-17	...	52,233	1,370	295	74	45	6,222	7,40,316	7,81,555	...	12,542	4,625	...	4,01,378	8,909	4,27,454
1917-18	...	27,248	2,515	186	72	...	9,557	5,55,668	5,92,246	...	12,855	3,784	...	7,13,557	2,02,236	9,32,432
1918-19	...	32,007	8,200	287	7	4	5,318	6,59,443	7,05,286	...	14,638	4,667	...	8,96,197	9,171	9,24,673
1919-20	...	24,600	4,570	361	58	52	4,781	39,641	65,123	...	12,791	4,887	...	28,066	5,068	51,712
1920-21	...	29,920	1,120	376	56	39	6,600	39,628	68,739	...	13,266	4,573	...	52,161	6,692	76,692
1921-22	...	...	...	...	...	...	...	...	...	...	...	...	...	...	...	...
1922-23	...	...	...	...	...	...	...	...	...	...	...	...	...	...	...	...
1923-24	...	...	...	...	...	...	...	...	...	...	...	...	...	...	...	...
1924-25	...	...	...	...	...	...	...	...	...	...	...	...	...	...	...	...
1925-26	...	...	...	...	...	...	...	...	...	...	...	...	...	...	...	...
1926-27	...	...	...	...	...	...	...	...	...	...	...	...	...	...	...	...
1927-28	...	...	...	...	...	...	...	...	...	...	...	...	...	...	...	...
1928-29	...	...	...	...	...	...	...	...	...	...	...	...	...	...	...	...
1929-30	...	...	...	...	...	...	...	...	...	...	...	...	...	...	...	...
1930-31	...	...	...	...	...	...	...	...	...	...	...	...	...	...	...	...

TABLE XVI.—INCOME AND EXPENDITURE OF TAVOY MUNICIPALITY.

Year.	Income.						Expenditure.									
	Tax on houses and lands.	Tolls (on roads and ferries).	Other taxes.	Bazaar rents and bazaar stall rents.	Other sources.	Total.	Expenditure on administration and collection of taxes.	Lighting.	Conser-vancy.	Hospitals and dispensaries.	Markets and slaughter-houses.	Public Works.	Public Instruction.	Other heads.	Total.	
	1	2	3	4	5	6	7	8	9	10	11	12	13	14	15	16
	Rs.	Rs.	Rs.	Rs.	Rs.	Rs.	Rs.	Rs.	Rs.	Rs.	Rs.	Rs.	Rs.	Rs.	Rs.	Rs.
1911-12	14,084	1,417	37,581	20,955	8,291	82,328	6,660	6,714	19,466	11,029	7,056	22,246	7,567	3,380	85,037	
1912-13	14,239	1,583	38,646	21,205	10,048	86,681	7,287	6,265	21,967	11,032	7,324	20,998	7,608	3,730	86,211	
1913-14	14,246	2,553	39,412	24,027	8,018	88,266	9,137	5,830	21,770	16,661	7,414	15,327	8,374	10,672	94,135	
1914-15	14,730	2,840	41,243	26,540	16,371	1,01,714	9,744	5,613	21,219	19,359	5,872	23,022	7,015	6,210	98,054	
1915-16	19,237	1,833	42,407	28,626	16,060	1,08,223	10,734	5,454	20,308	11,652	7,700	25,840	10,619	13,604	1,05,921	
1916-17	24,668	2,057	43,679	20,903	1,27,661	2,28,868	10,670	5,697	21,026	28,313	21,969	27,900	9,734	17,248	1,55,557	
1917-18	32,944	3,108	43,616	51,184	36,445	1,66,377	11,531	5,761	51,883	61,199	21,100	32,838	8,378	11,354	2,07,053	
1918-19	38,417	2,547	74,628	46,952	34,682	1,97,236	14,966	6,350	41,321	36,600	10,886	54,051	10,168	16,451	1,91,753	
1919-20	39,029	2,270	70,740	32,200	65,006	2,09,335	18,474	6,800	52,658	45,639	8,020	47,013	17,189	16,926	2,12,719	
1920-21	38,291	3,060	65,671	31,638	53,005	1,91,725	14,991	6,232	40,382	40,763	7,930	37,383	13,538	16,373	1,76,792	
1921-22	35,208	2,012	57,122	34,360	32,820	1,61,522	13,453	7,074	27,796	38,437	6,661	36,253	20,820	15,243	1,65,757	
1922-23	...	...	...	...	...	...	...	...	...	...	...	...	...	...	...	
1923-24	...	...	...	...	...	...	...	...	...	...	...	...	...	...	...	
1924-25	...	...	...	...	...	...	...	...	...	...	...	...	...	...	...	
1925-26	...	...	...	...	...	...	...	...	...	...	...	...	...	...	...	
1926-27	...	...	...	...	...	...	...	...	...	...	...	...	...	...	...	
1927-28	...	...	...	...	...	...	...	...	...	...	...	...	...	...	...	
1928-29	...	...	...	...	...	...	...	...	...	...	...	...	...	...	...	
1929-30	...	...	...	...	...	...	...	...	...	...	...	...	...	...	...	
1930-31	...	...	...	...	...	...	...	...	...	...	...	...	...	...	...	

TABLE XVII.—CRIME.

Year.	Persons convicted or bound over in respect of											
	Rioting and unlawful assembly.	Offences affecting life.	Grievous hurt.	Cattle theft.	Robbery and dacoity.	House-break- ing and theft.	Coinage offences.	Bad livelihood.	Offences under the			
									Opium Act.	Excise Act.	Forest Law.	Gambling Act.
1	2	3	4	5	6	7	8	9	10	11	12	13
1911	...	3	16	9	13	124	...	7	32	113	69	29
1912	2	11	27	10	14	132	...	17	21	126	143	65
1913	5	2	36	7	10	117	...	15	28	121	109	80
1914	...	6	52	8	19	123	...	6	36	122	43	79
1915	2	7	61	5	14	114	...	7	31	122	32	34
1916	5	10	80	1	7	104	...	6	20	112	15	55
1917	4	12	92	3	10	121	...	6	21	136	10	61
1918	6	9	101	6	9	138	...	10	37	142	7	19
1919	7	16	121	4	14	155	...	16	26	158	4	36
1920	12	8	69	13	27	174	...	54	23	130	4	31
1921	...	8	20	13	15	238	...	51	41	100	33	12
1922	...											
1923	...											
1924	...											
1925	...											
1926	...											
1927	...											
1928	...											
1929	...											
1930	...											
1931	...											

TABLE XVIII.—CRIMINAL JUSTICE.

Year.	Cognizable offences.						Non-cognizable offences.			
	Cases reported.	Cases investigated under section 169, Code of Criminal Procedure.	Cases sent up for trial.	Persons tried.	Persons acquitted or discharged.	Persons convicted.	Total cases for disposal.	Cases dismissed without trial.	Cases ending in discharge or acquittal.	Cases ending in conviction.
	1	2	3	4	5	6	7	8	9	10
1911	627	1	602	559	288	271	689	4	201	481
1912	762	2	680	655	335	320	983	27	273	683
1913	691	1	640	625	310	315	872	12	231	629
1914	757	5	720	738	328	390	1,113	35	318	760
1915	721	3	692	712	345	367	1,014	52	297	665
1916	712	8	687	732	427	255	928	40	206	602
1917	735	6	712	890	510	310	1,005	68	314	923
1918	821	9	790	957	572	314	1,221	78	251	902
1919	821	3	727	998	506	394	1,178	67	228	873
1920	1,238	4	1,151	1,938	721	1,217	486	12	32	442
1921	1,568	2	963	1,476	622	854	945	37	160	695
1922	...	...	...	...	...	...	...	...	...	...
1923	...	...	...	...	...	...	...	...	...	...
1924	...	...	...	...	...	...	...	...	...	...
1925	...	...	...	...	...	...	...	...	...	...
1926	...	...	...	...	...	...	...	...	...	...
1927	...	...	...	...	...	...	...	...	...	...
1928	...	...	...	...	...	...	...	...	...	...
1929	...	...	...	...	...	...	...	...	...	...
1930	...	...	...	...	...	...	...	...	...	...
1931	...	...	...	...	...	...	...	...	...	...

TABLE XIX.—CIVIL JUSTICE.

Year.	Civil suits in Courts of					
	District Judge.		Subdivisional Judges.		Township Judges.	
	Number of suits instituted.	Average value.	Number of suits instituted.	Average value.	Number of suits instituted.	Average value.
1	2	3	4	5	6	7
		Rs.		Rs.		Rs.
1911 ...	69	1,846	...	...	989	77
1912 ...	87	2,971	...	...	1,186	71
1913 ...	7	1,115	46	1,119	869	94
1914 ...	8	3,310	40	1,137	797	97
1915 ..	9	3,218	41	1,186	939	89
1916 ...	10	2,998	36	1,235	1,050	72
1917 ...	16	5,019	49	987	889	96
1918 ...	7	4,799	68	955	920	92
1919 ...	13	10,279	95	977	972	94
1920 ...	15	6,429	88	1,124	1,155	79
1921 ...	11	7,261	67	1,055	969	89
1922 ...						
1923 ...						
1924 ...						
1925 ...						
1926 ...						
1927 ...						
1928 ...						
1929 ...						
1930 ..						
1931 ...						

TABLE XXI.—JAIL STATISTICS, TAVOY JAIL.

Year.	Average daily jail population.		Rate of jail mortality per 1,000.	Expenditure on jail maintenance.	Gross cost per prisoner.	Earnings per prisoner.	Net cost per prisoner.	
	Male.	Female.						
1	2	3	4	5	6	7	8	
				Rs.	Rs.	Rs.	Rs.	
1911	...	166	12	...	9,966	79-0-0	14-0-0	65-0-0
1912	...	214	10	...	12,987	90-0-0	15-0-0	75-0-0
1913	...	136	3	7'9	11,985	86-0-0	23-0-0	63-0-0
1914	...	149	3	6'58	12,592	83-0-0	14-0-0	69-0-0
1915	...	162	2	12'20	13,552	83-0-0	12-0-0	70-0-0
1916	...	178	2	16'67	13,464	75-0-0	33-0-0	42-0-0
1917	...	160	1	43'48	13,062	81-0-0	23-0-0	58-0-0
1918	...	170	...	11'70	16,378	95-12-0	48-4-0	83-5-5
1919	...	133	1	6'10	19,866-1-0	148-7-0	63-0-0	127-9-10
1920	...	130	1	46'15	17,688	136-0-0	17-0-0	119-0-0
1921	...	149	1	7'87	20,557	136-2-3	10-3-3	128-14-0
1922	...	154	...	37'04	22,855	148-6-7	18-4-3	134-5-0
1923	...							
1924	...							
1925	...							
1926	...							
1927	...							
1928	...							
1929	...							
1930	...							

TABLE XXIII.—VACCINATION.

Year.	Number of operations.	Persons treated.		Cost of operations during the year.
		Successfully.	Unsuccessfully.	
1	2	3	4	5
				Rs. A. P.
1911-12	5,580	5,122	458	3,357-3 3
1912-13	6,872	5,685	1,187	3,746-14-6
1913-14	6,051	5,538	513	3,742-5-11
1914-15	6,402	5,582	920	4,503-0-0
1915-16	7,292	6,756	536	5,030 0-0
1916-17	7,476	6,724	752	4,635-0-0
1917-18	5,819	5,532	287	4,077-0-0
1918-19	7,518	6,650	508	4,741-0 0
1919-20	6,719	6,372	447	5,081-0-0
1920-21	6,610	6,314	396	4,957-0-0
1921-22	...			
1922-23	..			
1923-24	..			
1924-25	...			
1925-26	...			
1926-27	...			
1927-28	...			
1928-29	...			
1929-30	...			
1930-31	...			



TABLE XXIV.—EDUCATIONAL STATISTICS.

Year.	High Schools.		Middle Schools.			Upper Primary Schools.		Lower Primary Schools.		Technical training and other schools, public and private.		Expenditure on Education from					Total expenditure.				
	Schools.	Average daily attendance of scholars.		Schools.	Average daily attendance of scholars.		Schools.	Average daily attendance of scholars.		Schools.	Average daily attendance of scholars.		Schools.	Average daily attendance of scholars.		Provincial Funds.		District Cess Funds.	Municipal Funds.	Fees.	Other sources.
		Male.	Female.		Male.	Female.		Male.	Female.		Male.	Female.		Male.	Female.						
1	2	3	4	5	6	7	8	9	10	11	12	13	14	15	16	17	18	19	20	21	22
																Rs.	Rs.	Rs.	Rs.	Rs.	Rs.
1911-12	1	320	...	16	820	624	41	1,034	725	18	236	282	...	...	...	2,607	6,242	3,624	...	...	14,593
1912-13	1	340	...	17	862	561	35	956	821	17	358	330	...	...	...	3,032	6,195	5,521	...	...	14,748
1913-14	1	310	...	13	771	481	30	1,183	1,010	17	407	315	...	...	...	2,806	12,140	6,673	...	...	21,619
1914-15	1	346	...	16	952	623	36	1,123	918	19	445	474	...	...	...	2,997	15,027	7,256	...	...	25,280
1915-16	1	389	...	21	1,110	886	32	946	783	24	462	522	...	...	...	3,277	11,627	7,304	...	...	22,208
1916-17	1	384	...	16	954	715	35	871	807	29	505	712	...	...	...	2,710	12,400	7,948	...	...	23,078
1917-18	1	354	...	16	818	609	41	965	1,038	25	390	517	...	...	...	3,620	12,871	7,751	...	...	23,651
1918-19	1	339	...	14	756	553	45	1,154	1,230	24	364	463	...	...	...	2,529	13,576	8,803	...	...	24,908
1919-20	1	340	...	11	599	421	46	1,157	1,237	16	210	230	...	...	...	154	11,719	12,866	...	...	24,739
1920-21	1	280	...	14	652	536	40	866	991	12	168	238	...	...	...	257	12,096	12,367	...	...	24,710
1921-22																					
1922-23																					
1923-24																					
1924-25																					
1925-26																					
1926-27																					
1927-28																					
1928-29																					
1929-30																					
1930-31																					

### PART III.—TOWN AND VILLAGE CENSUS TABLES

LAUNGLÔN TOWNSHIP.—*Population of Towns and Village-tracts by Sex and by Religion.*

Village-tract or Town and Wards.		Number of Houses.	Total Population.			Buddhists.		Animists.		Hindus.		Mahomedans.		Christians.		Others.		Serial No. of Village-tract in tables of 1911.
No.	Name.		All.	Males.	Females.	Males.	Females.	Males.	Females.	Males.	Females.	Males.	Females.	Males.	Females.	Males.	Females.	
1	2	3	4	5	6	7	8	9	10	11	12	13	14	15	16	17	18	19
	Township	8,654	47,153	23,670	23,483	23,331	23,339	46	6	107	15	161	98	24	24	1	1	
	Launglôn	473	2,429	1,247	1,182	1,199	1,156	3	...	8	4	33	17	4	5	...	...	1
1	Auk-kyauk-wut	269	1,312	699	613	657	536	6	3	1	...	34	24	1	...	...	...	2
2	Atet-kyauk-wut	175	850	424	426	411	424	3	1	10	1	...	...	...	...	...	...	3
3	Kyauk-mat-tat	32	162	89	73	89	73	...	...	...	...	...	...	...	...	...	...	4
4	Kyauk-ni-maw	65	326	164	162	164	162	...	...	...	...	...	...	...	...	...	...	5
5	Zalut	144	704	327	377	377	377	...	...	...	...	...	...	...	...	...	...	6
6	Thagyet-taw	254	1,368	679	689	676	689	...	...	...	...	1	...	2	...	...	...	7, 8
7	Tawgye	144	779	413	366	412	365	1	1	...	...	...	...	...	...	...	...	9
8	Thabyeshauing	124	967	479	488	465	486	...	...	11	...	3	2	...	...	...	...	10
9	Hinchodaw	98	569	299	276	297	276	...	...	2	...	...	...	...	...	...	...	11
10	Kyet-yet-twin	210	1,330	625	705	623	705	1	...	1	...	...	...	...	...	...	...	12
11	Yebyu	460	2,553	1,292	1,361	1,284	1,260	4	...	1	...	2	...	...	...	1	1	13
12	Kadet-nge-tein	155	811	403	403	408	408	...	...	...	...	...	...	...	...	...	...	14
13	Kadet-nge-seik	96	513	263	250	263	250	...	...	...	...	...	...	...	...	...	...	15
14	Yathein	239	1,349	680	669	668	665	6	...	...	...	6	4	...	...	...	...	16
15	Pyin-gyang	150	805	425	380	407	380	2	...	15	...	1	...	...	...	...	...	17
16	Pyin-tein	143	684	319	365	316	365	3	...	...	...	...	...	...	...	...	...	18
17	Nyin-maw	129	717	360	348	353	337	...	...	...	...	15	11	1	...	...	...	19
18	Sit-pye	248	1,355	719	686	718	636	1	...	...	...	...	...	...	...	...	...	20
19	Le-thun-gau	102	522	280	242	277	241	1	...	...	...	2	1	...	...	...	...	21



TAVOY TOWNSHIP.—Population of Towns and Village-tracts by Sex and by Religion.

Village-tract or Town and Wards.		Number of Houses.	Total Population.			Buddhists.		Animists.		Hindus.		Mahomedans.		Christians.		Others.		Serial No. of Village-tract in tables of 1911.
No.	Name.		All.	Males.	Females.	Males.	Females.	Males.	Females.	Males.	Females.	Males.	Females.	Males.	Females.	Males.	Females.	
1	2	3	4	5	6	7	8	9	10	11	12	13	14	15	16	17	18	19
	Township ...	9,300	46,888	24,826	22,062	18,789	19,816	1,844	558	2,176	321	1,352	773	650	585	15	9	...
	Tavoy Town ...	5,205	27,480	13,818	13,662	11,019	12,450	417	140	1,094	205	1,036	663	243	198	9	6	...
	Normal civil population.	5,125	26,982	13,356	13,626	10,844	12,433	394	140	945	195	937	656	227	196	8	6	...
	1. Sanchi ...	172	1,002	440	562	430	560	3	...	7	...	...	2	...	...	...	...	...
	2. Okthayan ...	52	274	131	143	125	138	5	5	...	...	1	...	...	...	...	...	...
	3. Panayun ...	103	593	280	313	268	308	4	...	4	1	...	...	4	4	...	...	...
	4. Sinpanit ...	148	753	359	394	321	388	15	3	8	2	2	1	3	...	...	...	...
	5. Oloak ...	117	634	296	338	284	327	...	...	6	1	5	10	1	...	...	...	...
	6. Myaungfale ...	112	586	281	305	270	305	10	...	...	...	1	...	...	...	...	...	...
	7. Talainma ...	241	1,315	601	714	574	708	8	...	16	4	2	...	1	2	...	...	...
	8. Talaindein ...	314	1,665	503	562	448	540	22	9	22	7	9	4	2	2	...	...	...
	9. Myodwin ...	118	645	309	336	185	265	37	28	44	2	38	35	5	6	...	...	...
	10. Anauk ...	186	1,057	595	462	235	308	112	46	70	8	154	88	23	12	1	...	...
	11. Peinnedaw ...	223	1,272	742	524	612	457	7	...	60	5	69	62	...	...	...	...	...
	12. Myaukywa ...	245	1,095	573	523	327	366	...	...	115	33	89	75	40	48	2	1	...
	13. Karatpyin ...	152	858	422	436	311	370	...	...	43	17	62	45	6	4	...	...	...
	14. Kanyone ...	178	1,101	562	539	382	458	...	...	114	44	44	23	22	18	...	...	...
	15. Kowindat ...	173	944	457	467	312	371	10	9	47	11	84	72	4	2	...	...	...
	16. Bonmaru ...	172	864	386	478	351	468	8	...	24	4	3	6	...	...	...	...	...
	17. Zayit ...	236	1,286	674	612	399	503	59	20	69	7	132	65	10	12	5	5	...
	18. Thinbarweik ...	234	1,164	573	591	416	484	37	7	18	2	97	95	5	3	...	...	...

	19. Tanga ...	155	727	360	367	260	310	...	...	12	...	87	57	1	...	...	...	...
	20. Daungao ...	111	534	261	273	223	266	8	...	18	4	11	3	1	...	...	...	...
	21. Kyetrabyin ...	190	828	446	382	341	366	...	...	72	8	22	8	11	...	...	...	...
	22. Shaumaleraw	160	739	373	360	254	309	...	...	66	17	10	...	43	40	...	...	...
	23. Kyauktaw ...	132	712	337	375	329	374	1	...	7	1	...	...	...	...	...	...	...
	24. Nyaungyan (Kyauktaw)	131	568	292	276	198	228	35	10	30	7	1	...	28	31	...	...	...
	25. Kyauktawgyi	68	361	198	163	186	160	...	...	5	...	7	3	...	...	...	...	...
	26. Byawdawwa	101	396	215	187	164	170	1	...	40	5	1	...	9	6	...	...	...
	27. Hein-thit ...	159	877	405	472	397	467	6	3	2	2	...	...	...	...	...	...	...
	28. Kooee ...	167	908	443	405	438	459	...	...	2	3	...	...	3	3	...	...	...
	29. Heinlai	132	765	391	374	376	370	...	...	12	2	3	2	...	...	...	...	...
	30. Htain Hwang	221	1,369	660	703	651	700	...	...	1	...	3	...	5	3	...	...	...
	31. Wogyun (Nyaungyan)	110	556	250	306	234	306	5	...	11	...	...	...	...	...	...	...	...
	32. Taung-guk (Sinsaik)	121	693	314	379	313	379	1	...	...	...	...	...	...	...	...	...	...
	33. Taung-hiek (Sinsaik)	88	446	221	245	220	245	...	...	1	...	...	...	...	...	...	...	...
	Travellers ...	26	126	123	3	28	3	...	...	35	...	56	...	4	...	...	...	...
	Military Police, Jail prisoners and Hos- pital patients.	54	372	339	33	147	14	23	...	113	10	43	7	12	2	1	...	...
1	Zaha ...	295	1,618	874	744	757	712	2	...	92	18	23	14	...	...	...	...	...
2	Zalun ...	127	697	400	297	365	206	...	...	37	1	...	...	...	...	...	...	...
3	Talaingdaung ...	165	785	369	380	367	381	1	...	1	...	...	...	...	...	...	...	...
4	Thabya ...	178	732	396	336	365	319	3	...	10	...	18	17	...	...	...	...	...
5	Kyaukyat (Pauktaing)	227	1,209	605	595	592	590	1	...	8	...	4	5	...	...	...	...	...
6	Kado ...	129	674	342	312	329	321	5	2	...	...	8	6	...	...	...	...	...
7	Kanaingda ...	304	1,548	744	802	725	800	...	...	2	...	17	4	...	...	...	...	...
8	Mokti ...	209	1,056	522	534	469	534	...	...	48	...	5	...	...	...	...	...	...

\* Only a part of this vil age-tract of 1911 is included in the present village-tract.

TAVOY TOWNSHIP.—Population of Towns and Village-tracts by Sex and by Religion—concluded.

Village-tract or Town and Wards.		Number of Houses.	Total Population.			Buddhists.		Animists.		Hindus.		Mahomedans.		Christians.		Others.		Serial No. of Village-tract in tables of 1911.
No.	Name.		All.	Males.	Females.	Males.	Females.	Males.	Females.	Males.	Females.	Males.	Females.	Males.	Females.	Males.	Females.	
1	2	3	4	5	6	7	8	9	10	11	12	13	14	15	16	17	18	19
9	Sawwa ...	131	605	341	354	330	345	1	..	...	...	10	9	...	...	...	...	...
10	Yaungmaw ...	130	685	372	313	351	304	...	..	11	...	10	9	...	...	...	...	9
11	Shammadwin ...	141	790	366	343	366	343	...	..	...	...	...	...	...	...	...	...	10
12	Anyappa ...	180	804	449	355	404	330	23	...	3	...	...	...	17	12	...	...	11
13	Myitta ...	160	737	309	368	76	81	1	...	56	...	...	...	236	277	...	...	12
14	Seikku ...	19	81	41	40	...	...	...	...	...	...	...	...	41	40	...	...	13
15	Kataungui ...	25	83	40	43	...	...	40	43	...	...	...	...	...	...	...	...	14
16	Pvinthadaw ...	34	156	80	76	80	76	...	...	...	...	...	...	...	...	...	...	15
17	Kyaukmedaung ...	186	756	543	213	212	181	28	...	211	14	76	11	13	6	...	3	16
18	Kinmunchon ...	161	685	517	168	160	135	198	15	104	1	37	8	18	9	...	1	17
21	Khat ...	140	541	297	244	238	237	6	1	26	3	13	1	8	3	...	...	18
22	Wagon ...	112	558	354	204	204	170	81	11	57	12	6	7	6	4	...	...	21
23	Thabyuchaung ...	54	213	104	109	9	7	93	102	...	...	...	...	2	...	...	...	22
24	Gaungsechaung ...	15	69	32	37	...	...	32	37	...	...	...	...	...	...	...	...	23
25	Seinpyon ...	21	102	47	55	47	55	...	...	...	...	...	...	...	...	...	...	24
26	Myekanbaw ...	42	193	101	92	85	70	16	22	...	...	...	...	...	...	...	...	25
27	Kameik ...	8	32	20	12	1	1	15	12	...	...	...	...	4	...	...	...	26
28	Kyauktwin ...	35	191	97	94	81	83	...	...	...	...	...	...	16	11	...	...	27
29	Puttleto ...	110	604	439	165	145	130	119	4	126	10	22	4	24	15	3	...	28
31	Paungdaw ...	81	363	179	184	178	184	...	...	...	...	...	...	1	...	...	...	29
32	Kataungui ...	17	121	66	55	66	55	...	...	...	...	...	...	...	...	...	...	30
33	Kyaukton ...	15	210	111	99	111	99	...	...	...	...	...	...	...	...	...	...	31
34	Myinmoletkhat ...	20	129	61	68	11	9	50	50	...	...	...	...	...	...	...	...	32
35	Sinbyudaing ...	33	181	108	73	...	...	78	73	30	...	...	...	...	...	...	...	33
36	Amya ...	20	101	64	37	64	37	...	...	...	...	...	...	...	...	...	...	34
																		35
																		36

( 38 )

37	Ayen	...	34	164	83	81	83	81	...	...	...	...	...	...	...	...	...	...	...	37
38	Aungthawara	...	27	116	86	60	86	60	...	...	...	...	...	...	...	...	...	...	...	38
39	Thabyuchaung	...	42	196	116	80	116	80	...	...	...	...	...	...	...	...	...	...	...	33*
40	Hernyingvi	...	440	1,564	1,236	328	325	228	634	33	216	48	50	8	21	11	...	...	...	...
41	Zalon Rubber Estate	...	22	96	67	29	16	13	..	...	44	9	7	7	...	...	...	...	...	2*
	† Travellers in rural areas.	...	...	...	...	...	...	...	...	...	...	...	...	...	...	...	...	...	...	...

\* Only a part of this village-tract of 1911 is included in the present village-tract.

† The figures for travellers in Tavoy town are given separately at the beginning of the list and are not included in this entry.

‡ This formed part of Kemaungghla village-tract (No. 10 of Yebyu Township) in 1911.

THAYETCHAUNG TOWNSHIP.—Population of Towns and Village-tracts by Sex and by Religion.

Village-tract or Town and Waris.		Number of Houses.	Total Population.			Buddhists.		Animists.		Hindus.		Mahomedans.		Christians.		Others.		Serial No. of Village-tract in tables of 1911.
No.	Name.		All.	Males.	Females.	Males.	Females.	Males.	Females.	Males.	Females.	Males.	Females.	Males.	Females.	Males.	Females.	
1	2	3	4	5	6	7	8	9	10	11	12	13	14	15	16	17	18	19
	Township ...	7,928	41,593	20,845	20,748	20,347	20,404	50	8	10	2	152	121	195	213	...	...	...
1	Thayetchaung ...	289	1,358	691	667	686	667	1	...	3	...	2	...	...	...	...	...	1
2	Kya-in ...	178	879	412	467	408	465	...	...	4	2	...	...	...	...	...	...	2
3	Kyetsabyin ...	97	461	235	226	235	250	...	...	...	...	...	...	...	...	...	...	3
4	Thuyedaung ...	101	517	266	251	262	250	...	...	1	...	3	1	...	...	...	...	4
5	Kinshe ...	177	899	458	441	458	441	...	...	...	...	...	...	...	...	...	...	5
6	Sawpya ...	199	1,034	527	507	526	507	...	...	1	...	...	...	...	...	...	...	6*
7	Nyaungzin ...	506	2,532	1,264	1,268	1,261	1,268	1	...	...	...	2	...	...	...	...	...	7
8	Thayet-nit kwa ...	211	1,127	562	565	494	308	...	...	...	...	68	57	...	...	...	...	9
10	Thingyun ...	328	1,731	833	898	820	891	...	...	...	...	10	7	3	...	...	...	10
11	Mawshigon ...	189	1,018	540	478	540	478	...	...	...	...	...	...	...	...	...	...	11
12	Kyuakmyang ...	230	1,209	572	637	568	637	4	...	...	...	...	...	...	...	...	...	12
13	Oktu ...	182	909	485	424	485	424	...	...	...	...	...	...	...	...	...	...	13
14	Pelindaw ...	246	1,293	628	665	624	665	3	...	...	...	1	...	...	...	...	...	14
15	Payishaug ...	204	1,114	562	552	532	549	14	3	12	...	4	...	...	...	...	...	15
16	Kazi-tada-u ...	106	573	270	303	269	303	...	...	...	...	...	...	1	...	...	...	16
17	Pandaw ...	304	1,592	760	832	730	814	1	...	16	...	13	18	...	...	...	...	17
18	Tidutpyin ...	161	872	441	431	441	431	...	...	...	...	...	...	...	...	...	...	18
19	Einshebyin ...	79	467	247	220	247	220	...	...	...	...	...	...	...	...	...	...	19
20	Singu ...	116	643	332	311	332	311	...	...	...	...	...	...	...	...	...	...	20
21	Kywezat ...	181	1,002	507	495	504	495	...	...	1	...	2	...	...	...	...	...	21



23	Gon-nyinsek	236	1,434	703	731	699	737	...	...	...	...	4	4	...	...	...	...	23
24	Yechochaung	46	209	138	161	138	161	...	...	...	...	...	...	...	...	...	...	24
25	Pyinpyugyi	177	898	447	451	415	428	...	...	17	...	15	23	...	...	...	...	25
26	Pyinpyutha	78	472	237	235	235	235	2	...	...	...	...	...	...	...	...	...	26
27	Sonsin	238	1,195	597	598	393	597	...	...	...	...	4	1	...	...	...	...	27
28	Chauagwabyin	247	1,316	624	692	623	692	...	...	...	...	1	...	...	...	...	...	28
29	Winwa	61	228	161	121	158	121	...	...	...	...	3	...	...	...	...	...	29
30	Yange	277	1,506	766	740	742	732	...	...	11	...	13	8	...	...	...	...	30
31	Mindat	238	1,203	630	573	625	573	3	...	...	...	2	...	...	...	...	...	31
34	Kywemngon	378	2,044	1,035	1,009	1,034	1,009	1	...	...	...	...	...	...	...	...	...	34
36	Myamma Taungbyauk	99	557	291	266	291	266	...	...	...	...	2	...	...	...	...	...	36
37	Yebu	24	109	55	54	55	54	...	...	...	...	...	...	...	...	...	...	37
38	Kyauk-taung	12	64	32	32	32	32	...	...	...	...	1	...	...	...	...	...	38
40	Karen Taungbyauk	80	380	185	195	185	195	...	...	...	...	...	...	...	...	...	...	40
42	Winkapaw	111	662	342	320	340	320	...	...	...	...	...	2	...	...	...	...	42
44	Mèkè	140	703	371	332	248	329	15	...	...	...	2	...	6	3	...	...	44
45	Karen kazi	77	389	198	191	197	191	...	...	1	...	...	...	...	...	...	...	45
46	Ka-nyin-chaung	218	1,131	596	535	533	461	...	...	...	...	1	...	62	74	...	...	46
47	Bòk	18	81	41	40	41	40	...	...	...	...	...	...	...	...	...	...	47
48	Pa-aw A nauk	160	851	417	434	416	431	...	...	1	...	...	...	...	...	...	...	48
49	Pa-aw (Karen)	153	854	400	454	280	315	5	...	...	2	...	...	113	134	...	...	49
51	redet	303	1,612	814	798	783	736	5	5	23	...	...	8	2	...	...	...	51
53	Kyaukse	87	464	240	214	239	222	...	...	...	...	1	2	...	...	...	...	53
55	Laba	66	323	167	167	140	167	...	...	9	...	1	...	...	...	...	...	55
57	Padat-Chaung	96	532	259	273	259	273	...	...	...	...	...	...	...	...	...	...	57
59	Byawchanng	90	484	248	236	248	216	...	...	...	...	...	...	...	...	...	...	59
61	Kadwe	68	292	145	147	145	147	...	...	...	...	...	...	...	...	...	...	61
64	Padaukchaung	45	226	124	122	124	122	...	...	...	...	...	...	...	...	...	...	64

\* Only a part of Sawpya tract (No 6 of 1911) is included; the remainder now forms No. 64.

YEBYU TOWNSHIP.—Population of Towns and Village-tracts by Sex and by Religion.

Village-tract or Town and Wards.		Number of Houses.	Total Population.			Buddhists.		Animists.		Hindus.		Mahomedans.		Christians.		Others.		Serial No. of Village-tract in tables of 1911.
No.	Name.		All.	Males.	Females.	Males.	Females.	Males.	Females.	Males.	Females.	Males.	Females.	Males.	Females.	Males.	Females.	
1	2	3	4	5	6	7	8	9	10	11	12	13	14	15	16	17	18	19
	Township	4,067	21,152	11,653	9,499	10,145	8,975	254	7	569	28	179	37	502	452	4	4	
1	Yebyu	78	440	240	200	213	106	...	...	20	1	10	...	6	3	...	...	1
2	Maungmeshauing	244	1,382	671	611	649	608	...	...	13	...	0	3	...	...	...	...	2
3	Nyetwe	198	1,043	539	504	480	488	3	...	29	1	127	15	...	...	...	...	3
4	Kyaukkanya	91	500	339	251	278	251	...	...	58	...	2	...	1	...	...	...	4
6	Dauklauk	76	493	195	208	194	208	...	...	1	...	...	...	...	...	...	...	6
7	Talaingya	...	...	...	...	...	...	...	...	...	...	...	...	...	...	...	...	...
8	Okthayan Ashe	85	383	240	143	149	136	27	2	32	5	25	...	7	...	...	...	7
9	Wunbo Ashe	86	399	252	147	221	145	...	...	23	1	1	...	6	1	1	...	8
10	Kamaungghla	24	169	86	83	84	83	...	...	...	...	...	...	2	...	...	...	9
11	Kyauktaung	125	391	205	186	183	181	...	...	16	1	2	3	4	1	...	...	10
		103	593	286	307	285	305	...	...	...	...	2	2	...	...	...	...	11
12	Peinshauing	...	...	...	...	...	...	...	...	...	...	...	...	...	...	...	...	...
13	Thittodaik	125	517	260	248	267	248	2	...	...	...	...	...	...	...	...	...	12
14	Yalaing	111	625	335	300	334	290	...	...	...	...	...	...	1	...	...	...	13
15	Pagawzun	172	867	453	414	452	414	1	...	...	...	...	...	...	...	...	...	14
16	Kanyingauk	128	763	403	360	403	360	...	...	...	...	...	...	...	...	...	...	15
		112	652	339	313	339	313	...	...	...	...	...	...	...	...	...	...	16
19	Panyit-in	41	237	136	101	136	101	...	...	...	...	...	...	...	...	...	...	19
20	Wunbo Anauk	19	79	48	31	48	31	...	...	...	...	...	...	...	...	...	...	20
21	Nabule	182	862	457	405	456	405	...	...	1	...	...	...	...	...	...	...	21
22	Mndu	59	266	158	138	158	138	...	...	...	...	...	...	...	...	...	...	22
23	Leshauing	137	707	368	339	367	339	...	...	...	...	1	...	...	...	...	...	23
24	Egani	139	683	378	305	354	297	...	2	17	5	5	2	2	1	...	...	24
25	Kadutaung	86	358	198	160	181	158	14	...	1	...	2	...	...	...	...	...	25
26	Payadat	144	721	385	336	376	334	2	...	5	...	2	2	...	...	...	...	26
27	Zadi	131	787	423	364	416	363	4	...	...	...	1	...	2	1	...	...	27
28	Paungdaw	93	513	291	222	289	222	...	...	...	...	2	...	...	...	...	...	28



**PART IV.—Constituent Village-tracts of Groups and Circles notified under the Burma Rural Self-Government Act, 1921.**

(Corrected up to the 1st April 1924).

Notification No. 16, dated the 14th March 1923.

In exercise of the power conferred by section 4 of the Burma Rural Self-Government Act, 1921, the Lieutenant-Governor is pleased to aggregate the village-tracts in the Tavoy District specified in column (3), into the groups specified in column (4), and such groups into the circles specified in column (1), of the table appended hereto :—

*Table.*

Serial No. and Name of Circle.	Village-tract No.	Name of Village-tract.	Serial No. and Name of Group.	Number of members of Circle Board to be elected by Group.	Number of members of District Council to be elected by Circle Board.
1	2	3	4	5	6
I. Tavoy Circle (Tavoy Township.)	1	Zaha ...	1. Zaha ...	1	3
	2	Zalun ...	2. Talaingdaung	1	
	3	Talaingdaung ...			
	41	Zalun Rubber Estate			
	4	Thabya ...	3. Anyapya ...	1	
	12	Anyapya ...			
	5	Kyaukyat ...	4. Kyaukyat ...	1	
	11	Shanmadwin ...			
	6	Kado ...	5. Kanaingda ...	2	
	7	Kanaingda ...			
	8	Mòkti ...	6. Mòkti ...	2	
	9	Sawwa ...			
	10	Yaungmaw ...			
	21	Kat ...	7. Wagon ...	1	
	22	Wagon ...			
	40	Hermyingyi ...	8. Hermyingyi	1	
	17	Kyaukmèdaung ...	9. Kyaukmèdaung.	1	
	18	Kinmunchon ...			
	13	Myitta ...	10. Myitta ...	1	
	14	Seikku ...			
	15	Kataungni ...			
	16	Pyinthadaw ...			
	23	Thabyuchaung ...			
	24	Gaungse-chaung ...			
	25	Seinpyon ...			
	26	Myekanbaw ...			
	27	Kameik ...			

Serial No. and Name of Circle.	Village-tract no.	Name of Village-tract.	Serial No. and Name of Group.	Number of members of Circle Board to be elected by Group.	Number of members of District Council to be elected by Circle Board.		
1	2	3	4	5	6		
II. Yebyu Circle (Yebyu Township).	2	Maungmè-shaung	1. Maungmè-shaung.	1	4		
	3 10	Nyetwe Kamaung-hla ...	} 2. Nyetwe ...	1			
	4 6 7	Kyaukkanya ... Dauklauk ... Talaingya ...		} 3. Kyaukkanya		1	
	8 9 19 20 32	Okthayan (East) Wunbò East ... Panyitin ... Wunbò West ... Nankyè ...	} 4. Nankyè ...			1	
	1 11 16	Yebyu ... Kyauktaung ... Kanyingauk ...				} 5. Kanyingauk	1
	12 13	Peinshaung ... Thittodauk ...		} 6. Thittodauk			1
	14 15	Yalaing Pagawzun ...					} 7. Yalaing
	21 22	Nabulè ... Mudu ...		} 8. Nabulè ...		1	
	23 26	Lèshaung Payadat ...	} 9. Payadat ...			1	
	24 25	Egani ... Kadutaung ...		} 10. Egani ...		1	
	27 28	Zadi ... Paungdaw ...	} 11. Zadi ...			1	
	29 30	Thèchaung ... Onbinkwin ...		} 12. Onbinkwin		1	
	31 36 37 41	Kywèthonnyima ... Eindaraza ... Natkyizin ... Minthasakan ...	} 13. Natkywin ...			1	
	33 34 35 38 39 40	Shintabi ... Kyaukshat ... Kaleinaung ... Zimba ... Yapu ... Migyaunglaung ...		} 14. Kyaukshat		1	
	42 43	Kanbauk ... Pachaung ...				} 15. Kanbauk ...	1

Serial No and Name of Circle.	Village-tract No.	Name of Village-tract.	Serial No. and Name of Group.	Number of members of Circle Board to be elected by Group.	Number of members of District Council to be elected by Circle Board.	
1	2	3	4	5	6	
III. Kamyawgin Circle (Launglon Township).	52	Maungmagan ...	1. Maungmagan	1		
	53	Pandin-in ...	2. Pandin-in ...	1		
	50	Kyauksin ...	3. Thabawseik	1		
	51	Thabawseik ...				
	48	Sinpunit ...	4. Sinpunit	1		
	49	Nattwin ...				
	57	Tawshe ...	5. Sakangyi	1		
	54	Mè-on-nauk ...				
	55	Sakangyi ...				
	40	Theinthit ...	6. Nakandaw ...	1		
	41	Thaukkvabyin ...				
	43	Nakandaw ...				
	44	Kamaungdaung ...	7. Taungmin-byauung.	1	4	
	45	Teindwin ...				
	46	Taungminbyauung				
	39	Abu ...	8. Kamyawgin	1		
	40	Kamyawgin ...				
	35	Thayagon ...	9. Thayagon	1		
	37	Kamyawgyi ...	10. Minyat ..	1		
	34	Minyat ...				
	29	Pandalè ...	11. Pandalè	1		
	30	Yahaungwa ...	12. Inzauk ...	1		
	31	Inzauk ...				
	24	Thabya ...	13. Thabya ..	1		
	32	Wedi ...	14. Wedi ...	1		
	38	Shwegyun ...				
	IV. Lower Yebyu Circle (Launglon Township).	1	Launglon ...	1. Launglon ...	2	
		18	Pyintein ...			
		27	Sanhlan ...	2. Sitpye ...	1	
		28	Panyit ...			
		20	Sitpye ...	3. Tizet ...	1	
		19	Nyinmaw ...			
		26	Tizet ...	4. Kanyongyun	1	
		22	Kataungni ...			
		21	Lethungan ...	5. Yebyu ...	2	
		15	Kadengèzeik ...			
		56	Kanyongyun ...	6. Yathein ..	1	
		13	Yebyu ...			
16		Yathein ...	7. Thabyeshaung	1		
17		Pyingyaung ...				
10		Thabyeshaung ...	8. Kyetyettwin	1		
9		Tawgyè ...				
11		Hinchodaw ...	9. Thagyettau	1		
12		Kyetyettwin ...				
8	Thagyettaw ...	10. Atetkyaukwut.	1			
58	Kyauktwin ...					
3	Atetkyaukwut ...	11. Aukkyaukwut	1			
5	Kyauknimaw ...					
6	Zalut ...					
2	Aukkyaukwut ...					
4	Kyaukmattat ...					

Serial No. and Name of Circle.	Village-tract No.	Name of Village-tract.	Serial No. and Name of Group.	Number of members of Circle Board to be elected by Group.	Number of members of District Council to be elected by Circle Board.
1	2	3	4	5	6
V. Thayetchaung Circle (Thayetchaung Township ip.)	5	Kinshe ...	1. Sawpya ..	1	4
	6	Sawpya ...			
	2	Kya-in ...	2. Kya-in ...	1	
	3	Kyetsabyin ...			
	4	Thuyèdaung ...	3. Nyaungzin	1	
	7	Nyaungzin ...			
	10	Thingyun ...	4. Thingyun ...	1	
	13	Oktu ...	5. Thayethnitkwa.	1	
	10	Thayethnitkwa ...			
	14	Peindaw ...	6. Peindaw ...	1	
	15	Pagyishaung ...	7. Pagyishaung	1	
	16	Kazi-tada-u ...			
	1	Thayetchaung ...	8. Thayetchaung	1	
	11	Mawshigon ...			
	12	Kyaukmyaung ...	9. Kyaukmyaung.	1	
	45	Karen-kazi ...			
	17	Pandaw ...	10. Pandaw ...	1	
	18	Tidutpyin ...			
	19	Einshebyin ...	11. Tidutpyin	1	
	20	Singu ...			
	21	Kywèzat ...	12. Kywèzat ...	1	
55	Laba ...				
59	Byawchaung ...	13. Padatchaung	1		
57	Padatchaung ...				
VI Mindat Circle (Thayetchaung Township).	25	Pyinbyugyi ...	1. Pyinbyugyi	1	
	26	Pyinbyutha ...			
	27	Sonsin ...	2. Sonsin ...	1	
	28	Chaungwabyin ...			
	24	Yechochaung ...	3. Chaungwabyin.	1	
	23	Gonnyinseik ...			
	29	Winwa ...	4. Gonnyinseik	1	
	32	Mindat ...			
	36	Myanma Taungbyauk.	5. Mindat ...	1	
	37	Yebu ...			
	38	Kyauktaung ...	6. Myanma Taungbyauk.	1	
	40	Karen Taungbyauk			
	41	Thèchaung ...	7. Mèke ...	1	
	44	Mèke ...			
	34	Kywèmingon ...	8. Kanethiri ...	1	
	35	Kanethiri ...			
	30	Yangè ...	9. Yangè ...	1	
	46	Kanyinchaung ...			
	47	Bòk ...	10. Kanyinchaung.	1	
	63	Kadwè ...			
	51	Pèdet ...	11. Pèdet ...	1	
64	Padaukchaung ...				
53	Kyauksè ...	12. Pa-aw (West)	1		
48	Pa-aw (West) ...				
49	Karen Pa-aw ...	13. Karen-Pa-aw	1		

H. O. REYNOLDS,  
Secretary to the Government of Burma

## GAZETTEER B VOLUMES.

No.	District.	No.	District.
1	Akyab.	23	Pakòkku.
2	Hill District of Arakan.	24	Minbu.
3	Kyaukpyu.	25	Magwe.
4	Sandoway.	26	Pakòkku Hill Tracts.
5	Rangoon Town (Census Tables only).	27	Mandalay.
6	Insein.	28	Bhamo.
7	Hanthawaddy.	29	Myitkyina.
8	Tharrawaddy.	30	Katha.
9	Pegu.	31	Putao.
10	Prome.	32	Shwebo.
11	Bassein.	33	Sagaing.
12	Henzada.	34	Lower Chindwin.
13	Myaungmya.	35	Upper Chindwin.
14	Ma-ubin.	36	Chin Hills.
15	Pyapòn.	37	Kyaukse.
16	Toungoo.	38	Meiktila.
17	Salween.	39	Yamèthin.
18	Thatòn.	40	Myingyan.
19	Amherst.	41	Northern Shan States (Census Tables only).
20	Tavoy.	42	Southern Shan States (Census Tables only).
21	Mergui.	43	Karenni (Census Tables only).
22	Thayetmyo.		





