

38

Scott K 4261

PILIBHIT.

XXXVIII

Supplementary notes and statistics to

VOLUME XVIII

OF THE

District Gazetteers of the United Provinces  
of Agra and Oudh.

17250



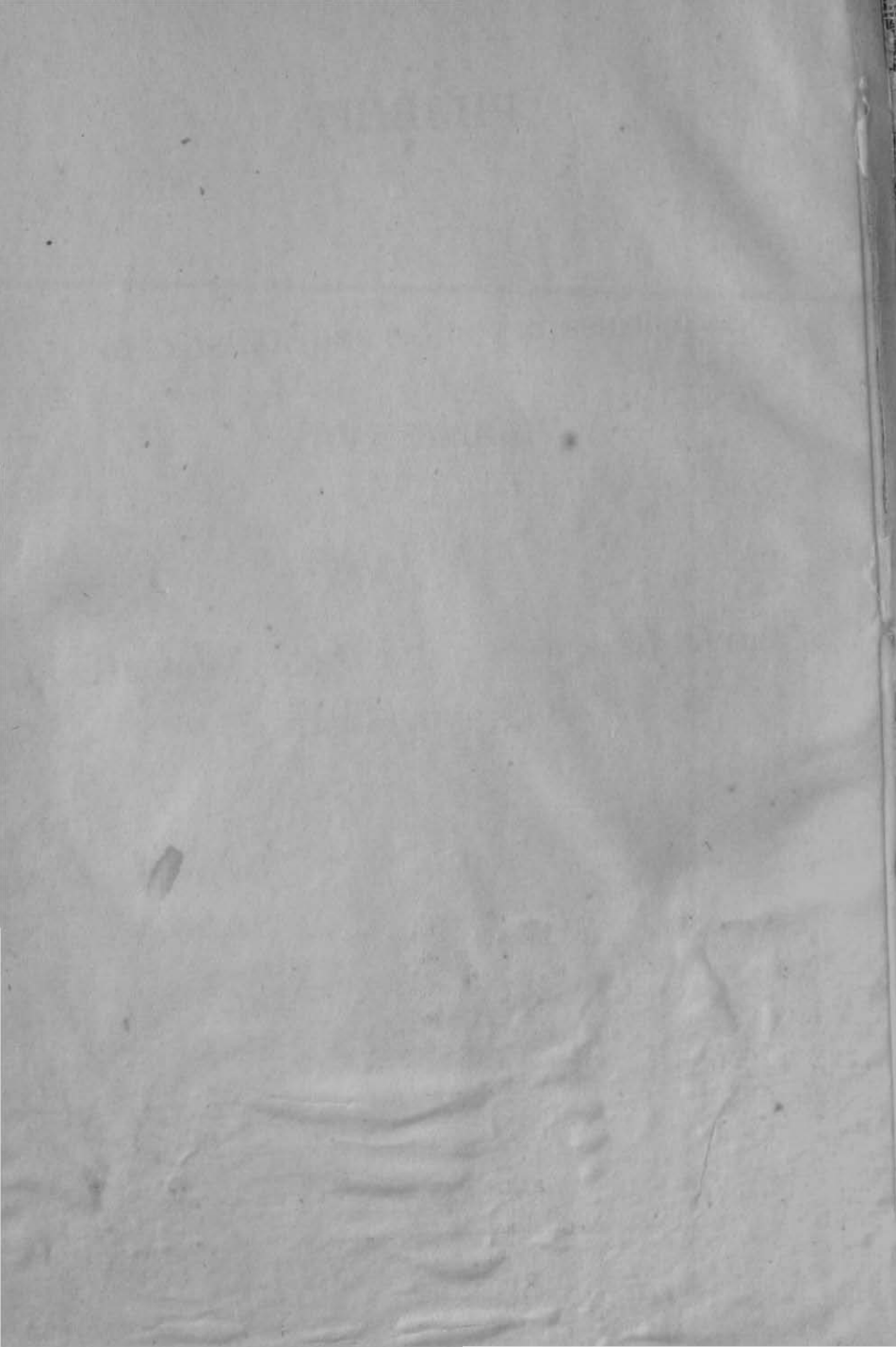
xxxviii)  
015  
250

ALLAHABAD :

Printed by F. Luker, Superintendent, Government Press, United Provinces

1915.

Price 8 as. (9d.)



# PILIBHIT.

---

Supplementary notes and statistics to

VOLUME XVIII

OF THE

District Gazetteers of the United Provinces  
of Agra and Oudh.

---



ALLAHABAD :

Printed by F. Luker, Superintendent, Government Press, United Provinces,

1915.



## PREFACE.

PART 1.—Notes of events which have happened since the date of the compilation of the Volume A.

1871

... of the ...  
... the ... of the ...

*Alterations and Additions to Part A of the Pilibhit District Gazetteer, bringing it up to date (1912).*

*Page 36.—PLAGUE.*

With a view of teaching the people how best to combat plague, the whole district was parcelled out in 1912 into small areas. Each of these local areas is presided over by a committee composed of non-officials only.

The duties of these local committees are—

- (1) to preach evacuation, inoculation and the importance of getting rid of fleas ;
- (2) to afford facilities for evacuation to those who wish to leave their houses when rats die or plague breaks out.

These local committees are controlled by pargana committees, which collect information and report what they have gathered to the central committee.

All three committees are composed entirely of non-officials.

The District Officer offers advice and helps to the central committee.

*Page 57.—CANAL.*

The following additions to and improvements in the canal systems in Pilibhit district have been made since December 1907.

(1) *Kailas weir and canal.*—This weir and canal were remodelled in 1911-12, the remodelling consisted of:—

- (a) Raising the weight of the weir.
- (b) Providing a powerful escape sluice.
- (c) Raising and strengthening the banks of the canal.

The object of the remodelling was to enable an increased supply of water being run in the canal during the period of the monsoon when it is available.

(2) *Absara distributary.*—The construction of a pakka regulator fitted with counter-balanced roller gates at Pota in place of old kachcha dam and small escape at the head of the canal system, thus eliminating the danger of failure of the dam in the monsoon and ensuring the rice supply.

(3) *Gajrola dam.*—The pakka escape at the Gajrola dam near Adkata has been enlarged so as to better control the flood

water of the Banarsi Nala and the new Banarsi head has also been constructed to control the feeder channel from the Absara river near Khamaria to this dam.

Page 65.—FAMINE.

*The scarcity of 1907-8.*

The monsoon of 1907 was unsatisfactory and the kharif crops of that year failed.

Scarcity was declared to exist in the district on 15th December 1907. However it was not found necessary to open test works. The agricultural population had reserves to fall back upon. The cutting and carrying of hay and baib grasses and firewood in the Government forests and the digging of kachcha wells and irrigating the rabi crop furnished sufficient employment for the agricultural population. Takavi to the extent of Rs. 2,08,636-14-0 was distributed :—

					Rs. a. p.
For seed..	..	..	..	..	1,88,062 14 0
„ kachcha wells ..	..	..	..	..	16,494 0 0
„ cattle ..	..	..	..	..	4,080 0 0

Many landlords also advanced money to their tenants. Gratuitous relief was found necessary for those who ordinarily subsist on charity and was started on 22nd January 1908. The greatest number of persons in receipt of this form of relief was 599 for the week ending 25th April 1908. It was closed from the 15th June 1908. Rupees 4,299-10-8 were spent on gratuitous relief, the incidence per unit i.e., the average total cost for the whole period per person relieved, was Rs. 9-4-7.

In addition to these Rs. 9,270 was collected by private subscription. Raja Lalta Prasad, Rai Bahadur, headed the subscription list with a donation of Rs. 5,000.

Of the Rs. 9,270, thus collected a sum of Rs. 5,000 was remitted to the Provincial Charitable Relief Fund and the balance distributed locally.

Over  $7\frac{1}{2}$  inches of rain fell on June 18th, 19th and 20th, 1908. This enabled the cultivators to sow their kharif crops, and as these turned out well, the effects of the scarcity soon ceased to be felt.

Page 72.—MANUFACTURES.

*L. H. Brothers' Sugar Factory.*

Considerable impetus has been given to the sugar industry in Pilibhit by the erection of a factory by Raja Lalta Prasad, Rai



Bahadur and his brother Sahu Har Prasad. This factory was opened in 1909. The building cost Rs. 85,000 and the machinery Rs. 1,55,000.

As it was found to be working at a loss the local Government deputed Mr. W. Hulme, the Government sugar engineer at the beginning of the cold weather of 1912 to remodel the machinery.

This was accomplished at a cost of Rs. 1,00,000 to which the local Government contributed Rs. 30,000.

The factory is now the most modern in India.

In the cold weather of 1912-13 the outturn of sugar was 13,262 maunds, the yield of sugar being 7 per cent. of the cane operated on.

#### *Page 76.—RAILWAYS.*

The Pilibhit district is now well supplied with railway communications by the Rohilkhand and Kumaun Railway Company. This is a metre gauge line, and was built as a State Railway and leased to the abovenamed company.

Forty-eight miles of the main line from Bareilly to Lucknow run through the Pilibhit district, 27 miles of the Pilibhit-Carewganj branch and 15 miles of the Pilibhit-Tanakpur extension and a project is being mooted of opening another line running direct from Bareilly to Bisalpur.

(1) *The main line.*—The section from Bhojeepera to Pilibhit was opened on the 15th November 1884, and that from Pilibhit to Gola in Kheri on the 1st April 1891.

The line enters the district on the western borders of pargana Jahanabad and thence goes to Pilibhit, crossing the Deoha by a good iron-girder bridge, and then turns south-east traversing parganas Puranpur and Pilibhit and passing into the Shahjahanpur district after a course of 48 miles. There are stations at Shahi, Pilibhit, Shahgarh, Puranpur and Dudhia Khurd or Dharmapur. There was formerly a station at Mala in the forest between Pilibhit and Shahgarh, but it was abandoned on account of the small traffic and the extreme unhealthiness of the place.

(2) *The Pilibhit-Carewganj line.*—This was built by and is worked by the Rohilkhand and Kumaun Railway. It was opened in January 1912. It runs due south—crosses the Katna river by a girder bridge and thence into Shahjahanpur district after a

course of 27 miles. It passes through parganas Pilibhit and Bisalpur and has stations at Pauta, Bhopatpura near Barkhera, Sherganj and Bisalpur. This extension has had a marked effect on the trade of these stations especially on Bisalpur, offering an easy outlet for material that hitherto had to be carted a distance of at least 20 miles.

*The Pilibhit Tanakpur.*

This is also a metre gauge track built by the State and worked by the Rohilkhand and Kumaun Railway. This line was opened on 15th May 1912. The line starts from Pilibhit and running in a north-easterly direction crosses the Khakra river by an iron girder bridge leaves the district and passes into Naini Tal district after a course of 15 miles. It passes through pargana Pilibhit and has stations at Pilibhit-Kachheri, Neoria and Majhola. This branch should have a good effect on the trade in forest produce and in the grain grown in the north of the district as well as opening up an outlet for the local banias to trade with the Nepalese, Kumaunis, and Tibetans at Tanakpur, which is an important market for hill produce.

*Pages 83-84.—CENSUS 1911.*

During the decennium 1901-11, the population of the district increased by 17,278 or 3·67.

The increase was 1,082 in the Pilibhit tahsil, 2,555 in the Bisalpur and 3,896 in Puranpur tahsil.

*Page 133-134.—EXCISE ADMINISTRATION.*

The contract system was introduced into the district on 1st April 1909. The country-spirit is now supplied by Messrs. Carew and Co. of Shahjahanpur and is sold at fixed prices to licensed vendors.

Each tahsil has a bonded-warehouse in charge of an Excise Inspector who is responsible for supervision and all the preventive work in the tahsil.

On 1st of April 1910 the rate of duty for the town of Pilibhit was raised from Rs. 2-4-0 and Rs. 1-8-0 to Rs. 2-10-0 and Rs. 1-12-0 per gallon of 25° and 50° under proof liquor respectively.

*Opium.*

With effect from 1st April 1909 the sale of opium by the treasurer or his agent has been discontinued.

*Page 130-131.—POLICE FORCE.*

The police establishment maintained by municipalities has been provincialised with effect from 1st March 1906, under G. O. No. 366—XI—214D, dated the 3rd February 1905.

Under G. O. No. 2205—XI—640D, dated the 3rd July 1911, the towns administered under Act XX of 1856, have been relieved of the police charges with effect from 1st April 1912.

*Page 143-144.—DISPENSARIES.*

The dispensary at Bilsanda, built by Lala Bhagwan Das was opened to the public on June 26th, 1910.

It has been made over to the District Board, the founder contributing an annual grant of Rs. 300.

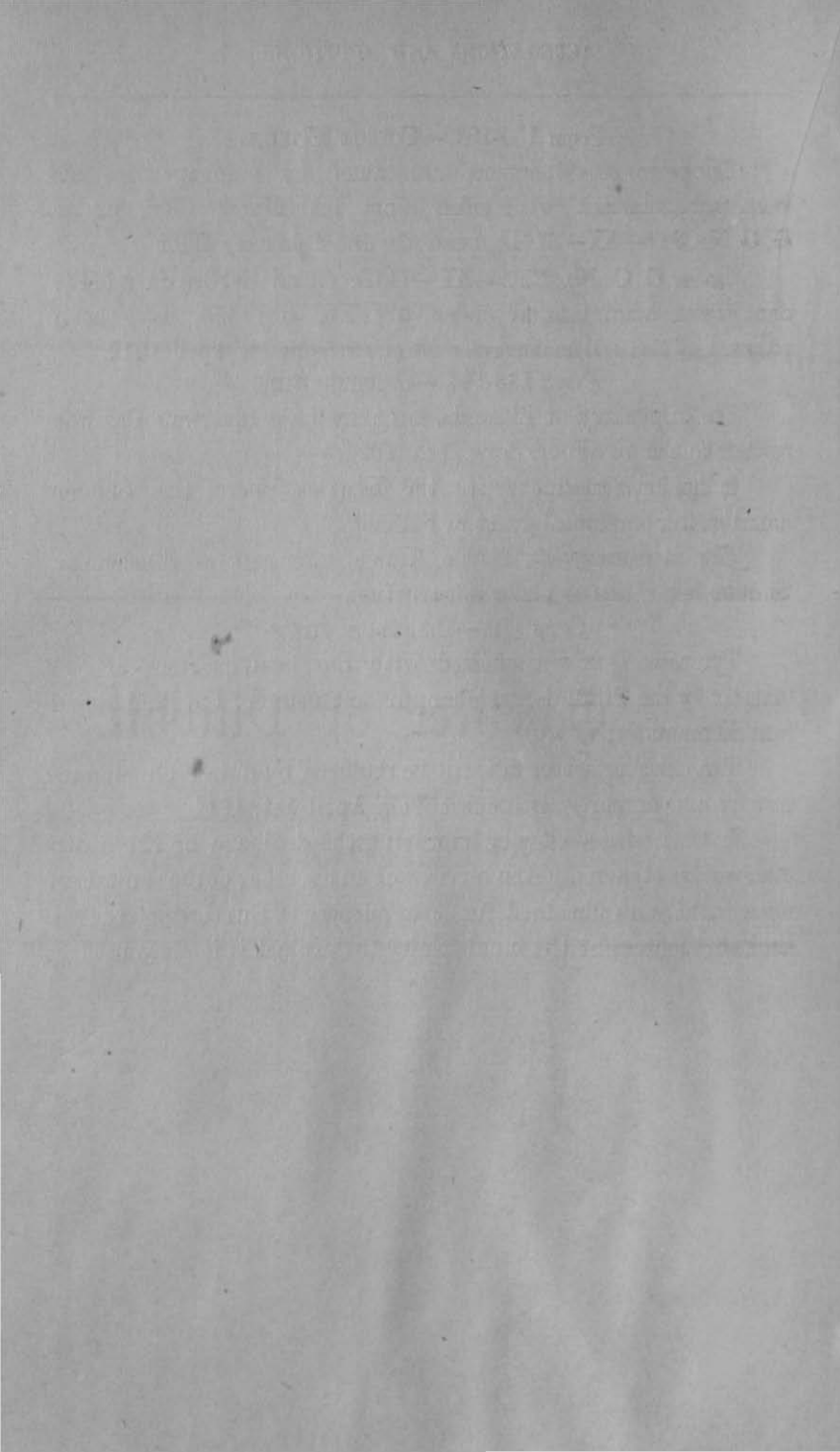
The dispensary at Madho Tanda, the gift of Musammat Sunder Kuer, is now under construction.

*Page 179.—BISALPUR TOWN.*

The town is now connected with the head-quarters of the district by the Pilibhit-Shahjahanpur extension of the Rohilkhānd and Kumaun Railway.

The existing octroi tax will be replaced by a tax on circumstances and property with effect from April 1st, 1914.

In 1911 with a view of improving the drainage of the town a survey was taken and the services of an overseer of the sanitation department were obtained for the purpose. But owing to the limited resources of the municipality the project is in abeyance.



---

Gazetteer of Pilibhit.

—  
APPENDIX.

---

GAZETTEER OF PUNJAB

APPENDIX

STATES

GAZETTEER OF PUNJAB

APPENDIX

# GAZETTEER OF PILIBHIT.

## APPENDIX.

### CONTENTS.

	PAGE.
TABLE I.—Population by tahsils, 1911 .. .. .	i
TABLE II.—Population by thanas, 1911 .. .. .	ii
TABLE III.—Vital statistics .. .. .	iii
TABLE IV.—Death according to cause .. .. .	iv
TABLE VI.—Principal crops by tahsils .. .. .	v
TABLE VII.—Criminal Justice .. .. .	viii
TABLE VIII.—Cognizable crime .. .. .	ix
TABLE XI.—Excise .. .. .	x
TABLE XII.—Stamps .. .. .	xi
TABLE XIII.—Income-tax .. .. .	xii
TABLE XV.—District board .. .. .	xiv
TABLE XVI.—Municipalities .. .. .	xv
TABLE XVII.—Municipality of Bisalpur .. .. .	xvi
TABLE XVIII.—Education .. .. .	xvii

STATE OF NEW YORK

IN SENATE

JANUARY 18, 1893

1893



TABLE 1.—*Population by Tahsil 1911.*

Tahsils.	Total.			Hindus.			Muhammedans.			Others.		
	Persons	Males	Females.	Persons.	Males.	Females.	Persons.	Males.	Females.	Persons.	Males.	Females.
1	2	3	4	5	6	7	8	9	10	11	12	13
Bisalpur .. ..	178,888	107,799	91,089	176,129	95,517	80,612	21,960	11,898	10,122	799	444	353
Pilibhit .. ..	195,749	104,988	90,761	141,972	76,904	65,068	52,803	27,545	25,258	974	539	435
Puranpur .. ..	92,980	49,215	43,765	81,157	43,134	38,023	11,511	5,913	5,598	312	168	144
Total .. ..	487,617	262,002	226,615	399,258	215,555	183,703	86,274	45,296	40,978	2,085	1,151	934

TABLE II.—Population by thanas 1911.

Thanas.	Total-			Hindus.			Muhammedans.			Others.		
	Persons.	Males.	Females.	Persons.	Males.	Females.	Persons.	Males.	Females.	Persons.	Males.	Females.
1	2	3	4	5	6	7	8	9	10	11	12	13
Barkhera .. ..	63,161	33,874	29,287	57,003	30,578	26,425	5,786	3,100	2,686	372	196	176
Bilsanda .. ..	67,753	36,769	30,984	62,312	33,834	28,483	5,246	2,838	2,408	195	107	88
Bisalpur .. ..	78,094	42,555	35,539	65,100	35,542	29,558	12,073	6,517	5,556	921	496	425
Jahanabad .. ..	52,130	28,204	23,926	38,641	21,028	17,613	12,925	6,872	6,053	564	304	260
Neoria Husainpur .. ..	32,155	17,086	15,039	23,223	12,444	10,779	8,728	4,523	4,205	204	119	85
Madhotanda .. ..	28,942	15,452	13,470	25,531	13,612	11,919	3,219	1,746	1,473	172	94	78
Pilibhit .. ..	69,001	37,050	32,041	50,917	27,723	23,194	17,424	8,927	8,497	750	400	350
Puranpur .. ..	64,058	33,763	30,295	55,473	29,435	26,038	8,292	4,167	4,125	293	161	132
Ameria .. ..	32,253	17,249	15,004	19,574	10,581	6,993	12,581	6,606	5,975	98	62	36
Total .. ..	487,617	262,002	225,615	397,774	214,767	183,007	86,274	45,296	40,978	3,569	1,939	1,630



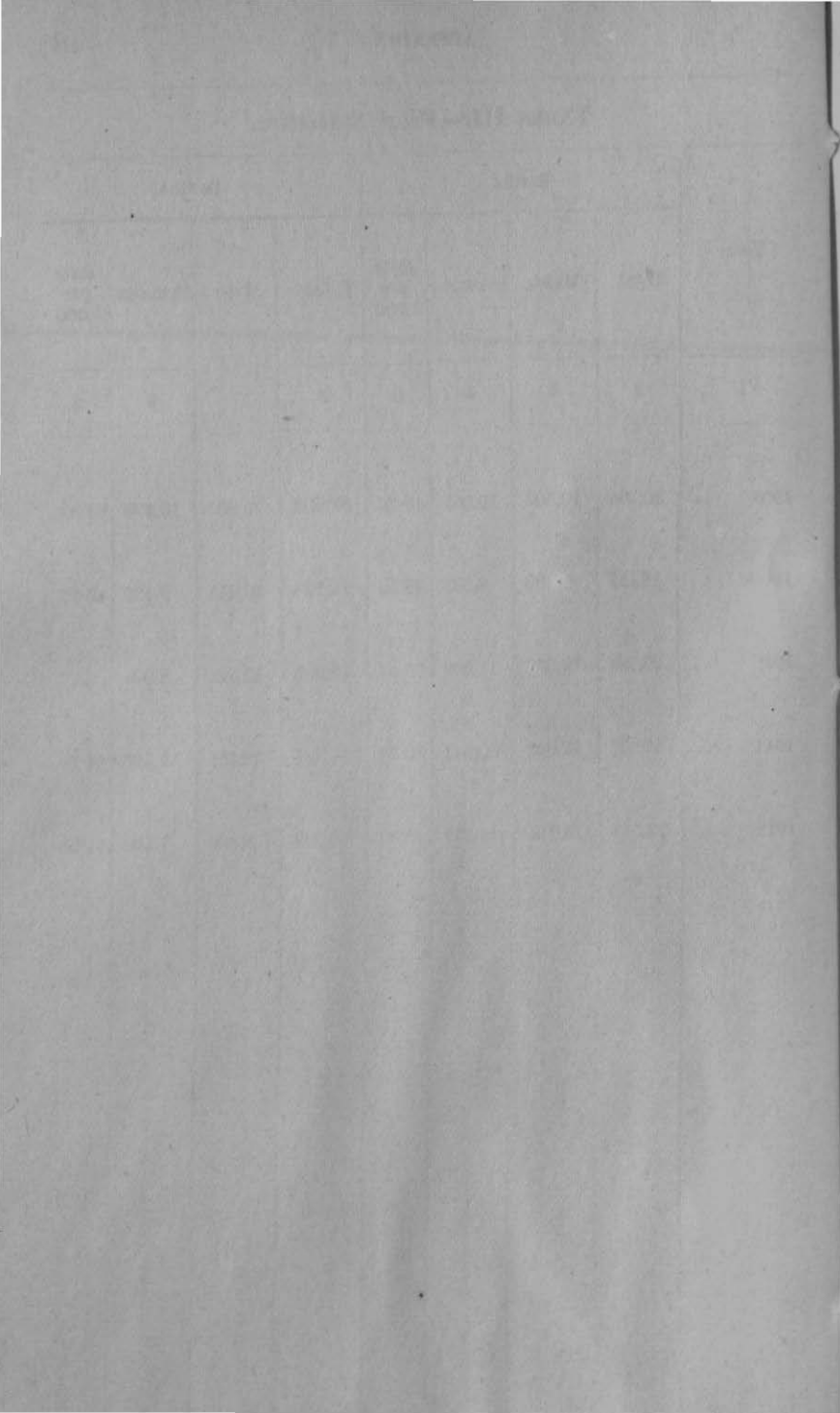
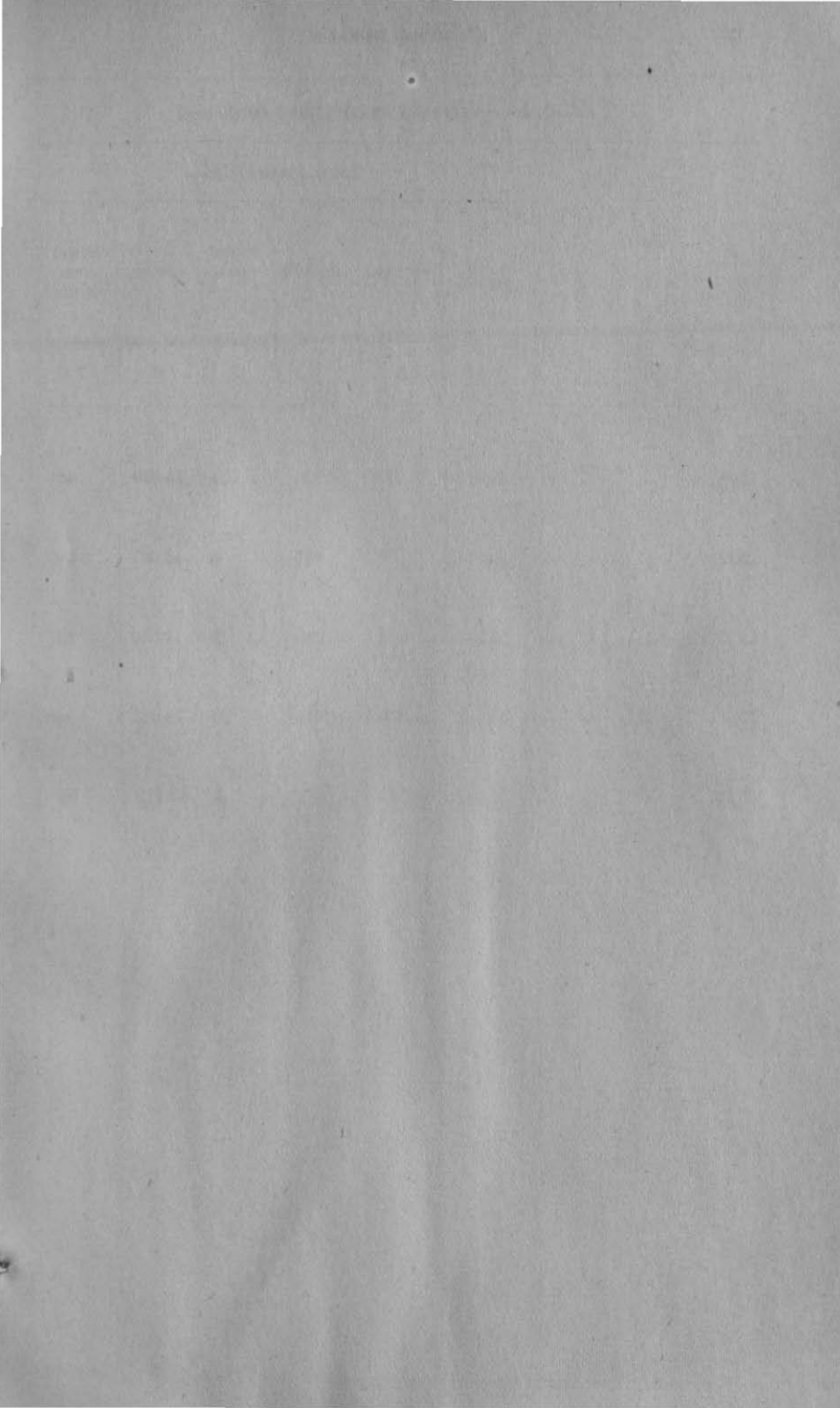


TABLE III.—*Vital Statistics.*

Year.	Births.				Deaths.			
	Total	Males.	Females.	Rate per 1,000.	Total.	Males.	Females.	Rate per 1,000.
1	2	3	4	5	6	7	8	9
1908 ..	20,564	10,563	10,001	43.70	32,403	15,905	16,498	68.89
1909 ..	18,112	9,280	8,832	38.50	19,175	10,015	9,160	40.77
1910 ..	23,788	12,326	11,462	50.57	19,303	10,325	8,978	..
1911 ..	22,977	12,035	10,942	40.34	24,347	12,751	11,596	51.76
1912 ..	23,513	12,194	11,319	48.92	15,537	8,409	7,130	31.88

TABLE IV.—Deaths according to cause.

Year.	Total deaths from—					
	All causes.	Plague.	Cholera.	Small-pox.	Fever.	Bowel complaints.
1	2	3	4	5	6	7
1908	32,403	89	2,806	584	25,656	48
1909	19,175	..	455	3	16,633	15
1910	19,303	638	270	3	15,630	21
1911	24,347	1,825	804	24	18,022	44
1912	2,042	773	102	1	12,279	36



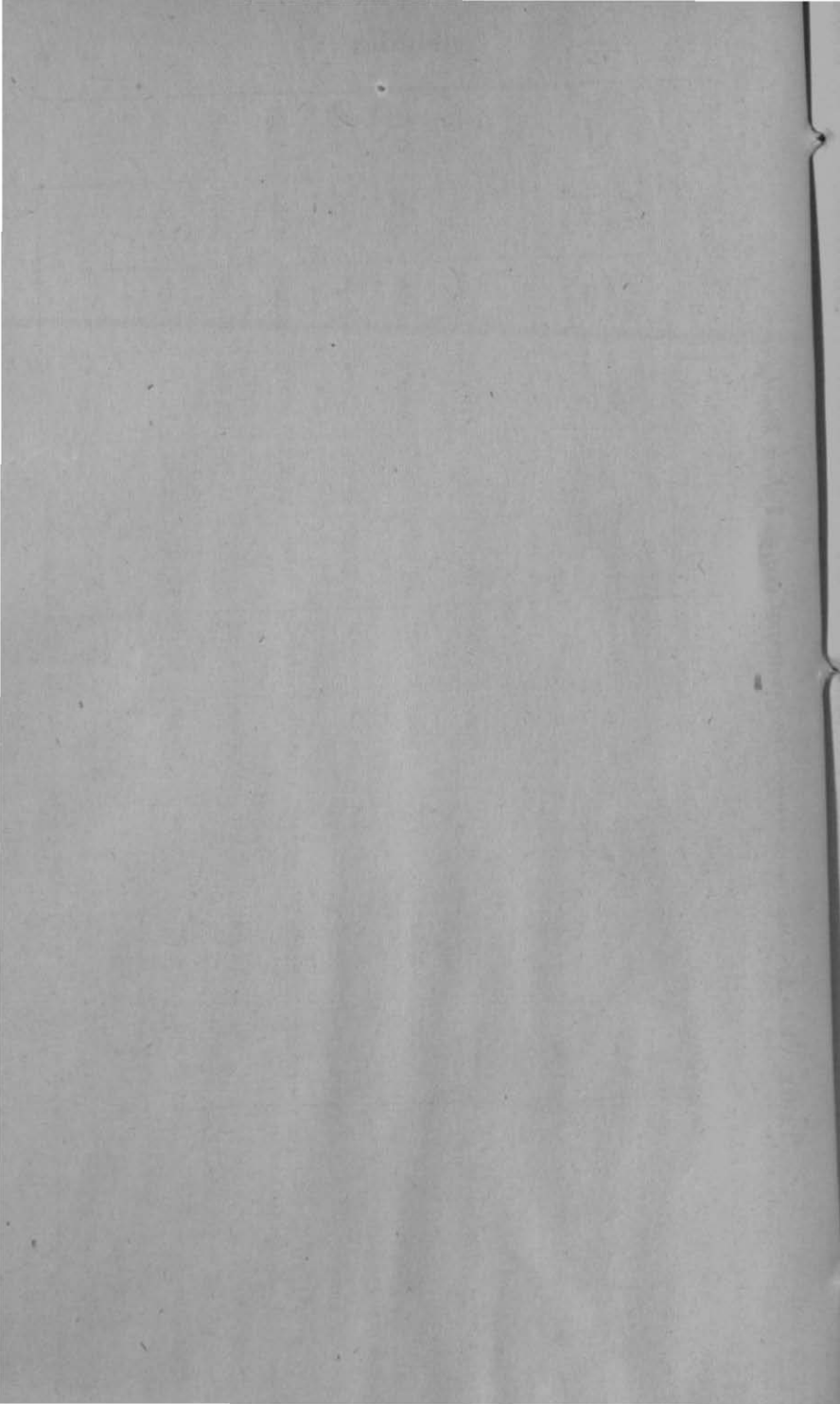


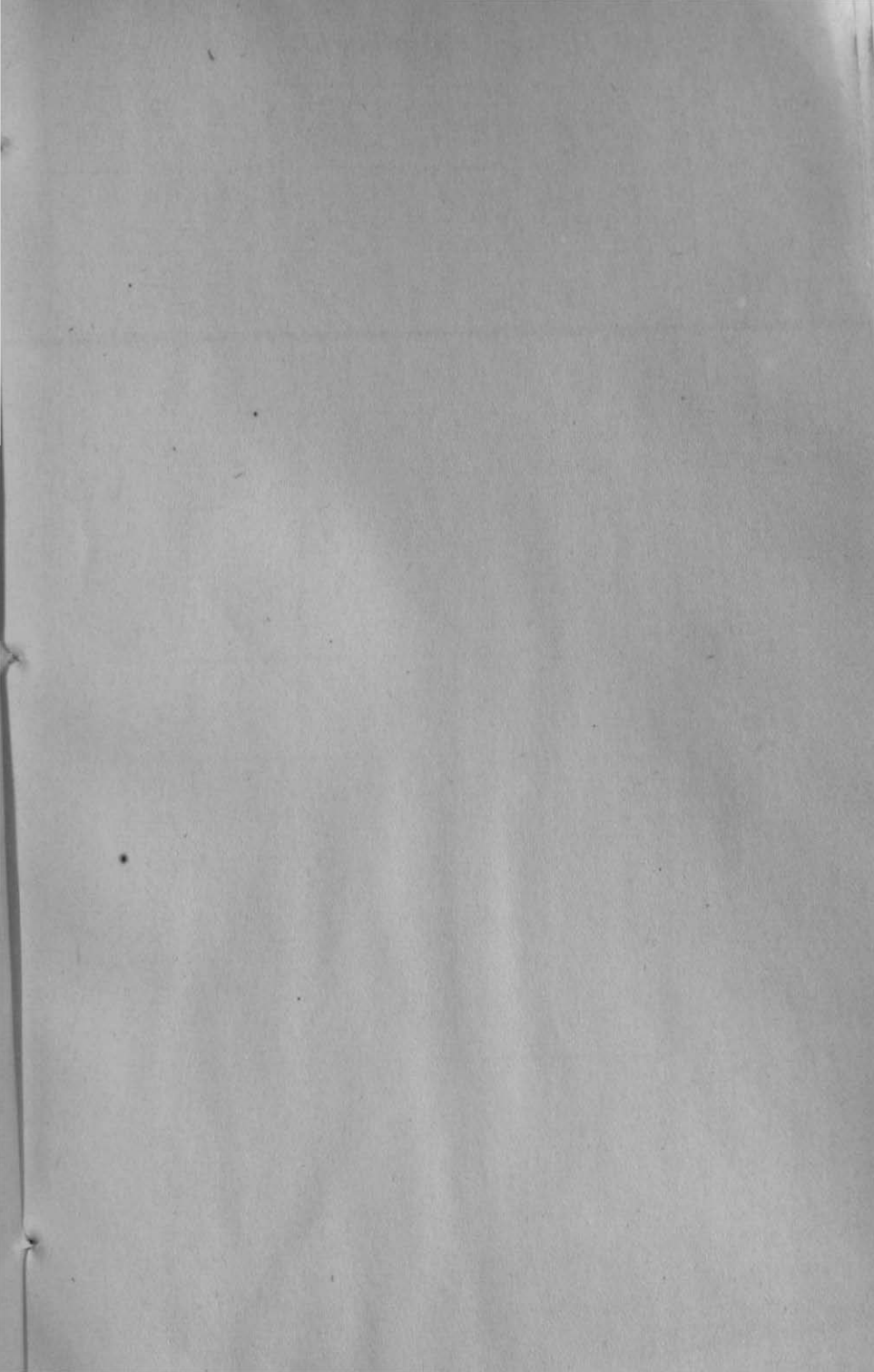


TABLE VI.—Area in acres under the principal crops, Tahsil Bisalpur.

Year.	Rabi.					Kharif.					
	Total.	Wheat alone.	Barley alone and mixed.	Gram.	Linseed.	Total.	Rice.	Sugar-cane.	Bajra alone and mixed.	Urd, Mung and Moth.	Kodon.
<i>Fasli.</i>											
1315 .. ..	58,610	29,660	20,624	5,204	134	108,956	44,919	18,570	15,076	2,508	5,621
1316 .. ..	67,092	33,662	19,657	9,661	181	107,656	31,850	16,076	15,633	2,790	8,437
1317 .. ..	81,018	35,487	20,950	20,556	505	100,429	40,751	14,125	14,747	3,254	6,819
1318 .. ..	89,511	37,082	18,781	31,899	1,749	75,185	34,469	13,418	15,698	3,395	8,205
1319 .. ..	95,030	36,915	16,664	36,589	4,862	73,782	34,052	14,280	16,936	2,535	5,979
1320 .. ..	94,362	39,469	16,052	33,640	5,201	77,631	42,867	14,747	11,062	1,620	7,335

TABLE VI—(continued)—Area in acres under the principal crops, Tahsil Pilibhit.

Year.	Rabi.					Kharif.						
	Total.	Wheat alone.	Barley alone and mixed.	Gram.	Linseed.	Total.	Rice.	Sugarcane.	Bajra alone and mixed.	Urd, Mung and Moth.	Kodon.	
<i>Fali.</i>												
1315 .. ..	42,565	17,239	13,216	8,855	123	129,370	84,915	19,488	3,009	1,562	4,689	
1316 .. ..	66,171	25,405	15,036	19,771	530	125,008	76,293	15,760	3,454	1,176	5,952	
1317 .. ..	82,985	28,498	13,106	32,825	1,465	120,452	84,073	15,938	2,405	1,455	3,963	
1318 .. ..	81,221	28,931	11,074	38,552	2,664	107,972	83,882	15,792	1,987	1,229	5,082	
1319 .. ..	77,648	27,229	11,464	34,542	4,413	107,463	76,519	17,177	2,996	1,566	9,215	
1320 .. ..	73,522	29,648	11,292	29,832	2,752	108,215	84,257	16,667	1,433	1,255	4,603	



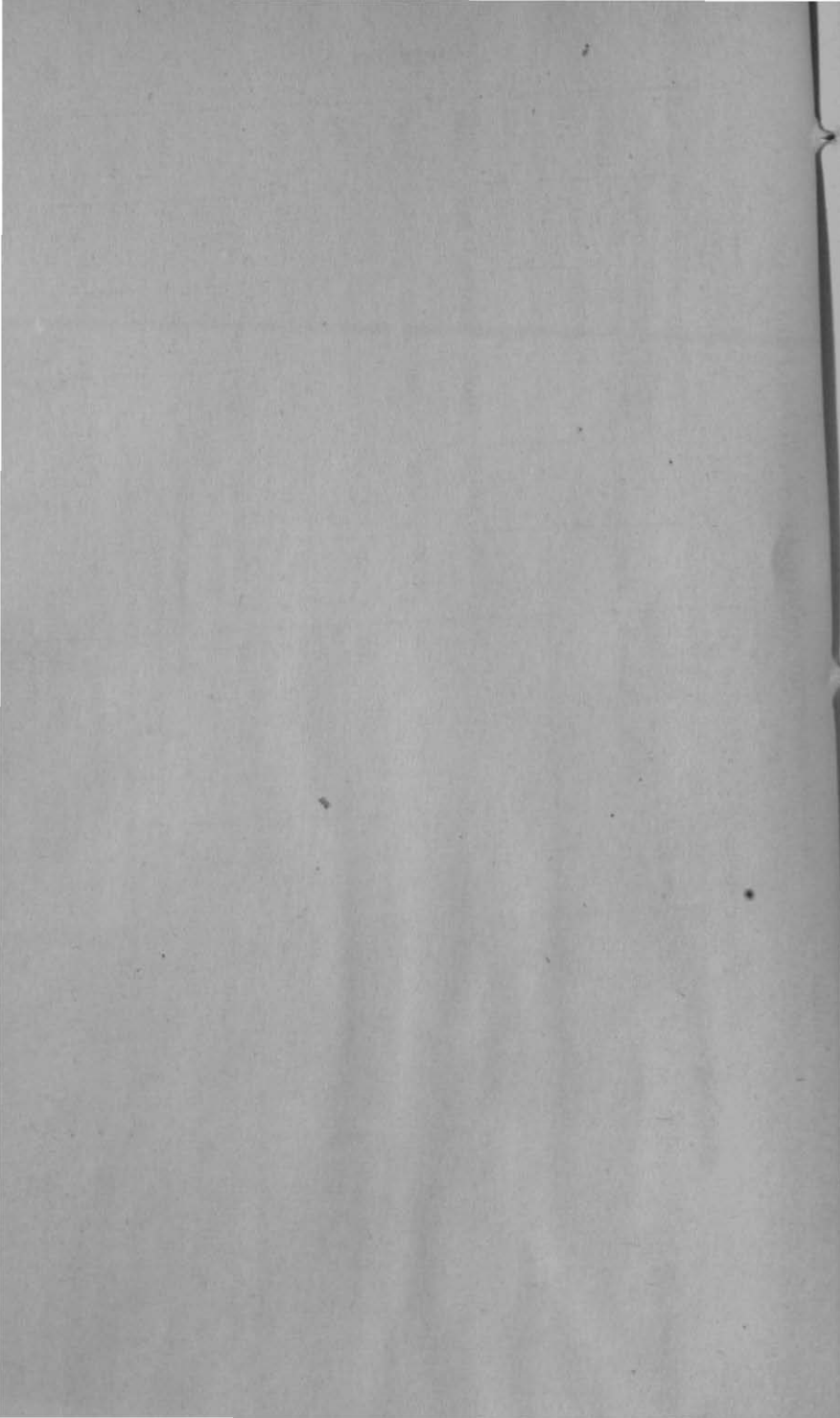
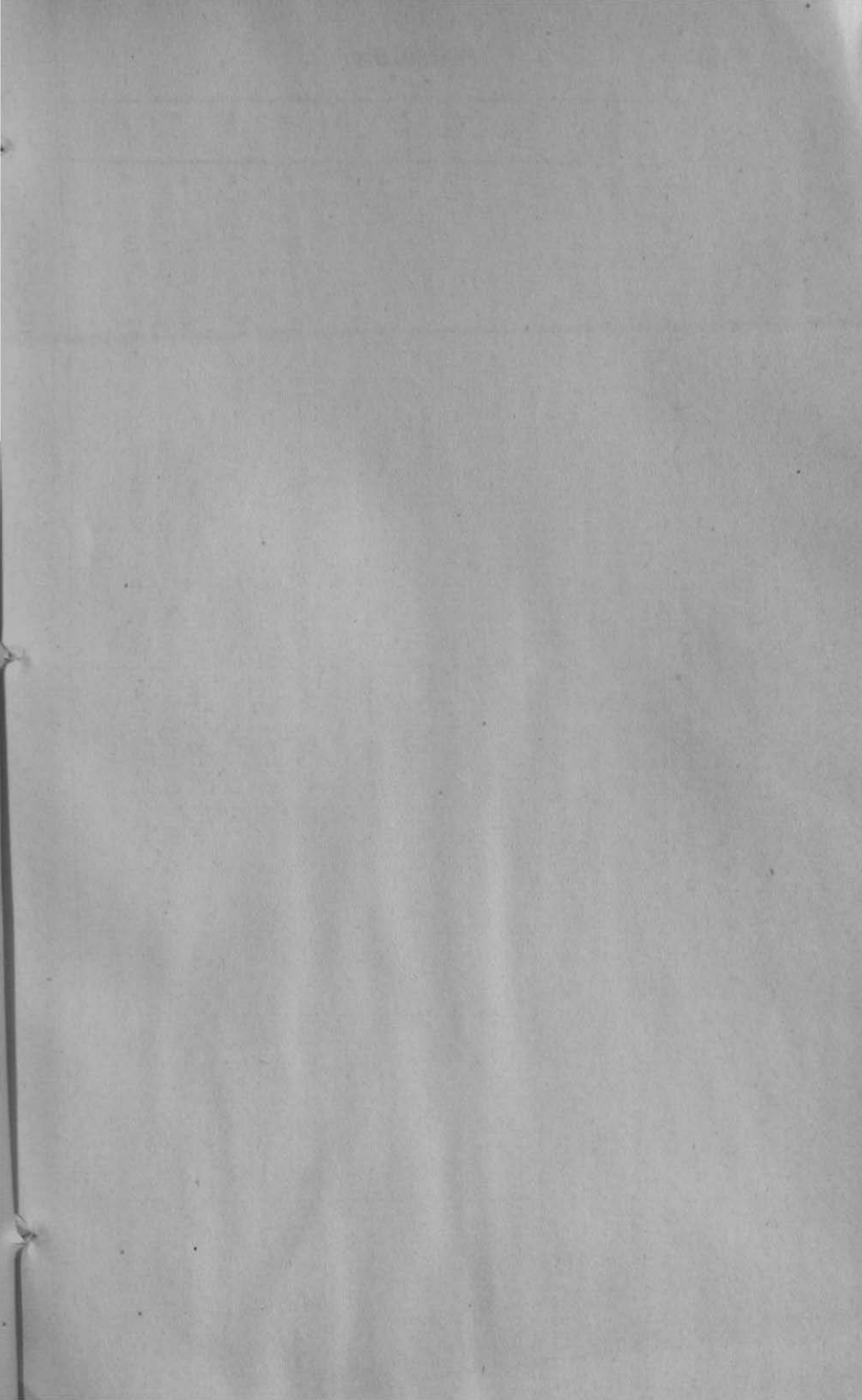


TABLE VI—(concluded).—Area in acres under the principal crops, Tahsil Puranpur.

Year.	Rabi.					Kharif.					
	Total.	Wheat.	Barley alone and mixed.	Gram.	Linseed.	Total.	Rice.	Sugar-cane.	Bajra alone and mixed.	Urd, Mung and Moth.	Kodon.
<i>Fasli.</i>											
1315 .. ..	30,346	19,213	8,003	1,581	20	75,578	21,165	4,040	18,681	16,729	6,344
1316 .. ..	42,016	25,516	12,857	1,394	52	66,246	16,266	3,235	20,607	12,586	5,007
1317 .. ..	54,006	30,478	12,044	7,635	95	65,816	16,799	3,020	16,349	15,614	3,808
1318 .. ..	62,498	35,480	10,443	15,422	153	60,008	19,813	2,841	15,168	19,815	2,971
1319 .. ..	59,852	36,524	8,371	14,625	332	63,211	17,616	3,667	18,240	19,548	4,140
1320 .. ..	59,236	40,227	7,033	10,932	1,044	64,593	22,031	3,460	18,424	16,110	4,568

TABLE VII.—*Criminal Justice.*

Year.	Number of persons convicted or bound over in respect of—													
	Offences against public tranquillity (chapter VIII).	Offences affecting life.	Grievous hurt.	Rape.	Cattle theft.	Criminal force and assault.	Theft.	Robbery and daktaiti.	Receiving stolen property.	Criminal trespass.	Bad-livelihood.	Keeping the peace.	Cases under—	
													Opium Act.	Excise Act.
1	2	3	4	5	6	7	8	9	10	11	12	13	14	15
1908 ..	58	11	160	..	..	21	170	3	51	149	43	..	2	23
1909 ..	90	12	7	..	11	27	125	1	52	64	48	33	2	21
1910 ..	129	3	12	..	11	36	96	..	25	59	62	52	4	33
1911 ..	70	6	141	..	13	19	115	4	23	89	20	31	6	28
1912 ..	68	6	165	..	7	30	80	2	24	92	27	10	5	32



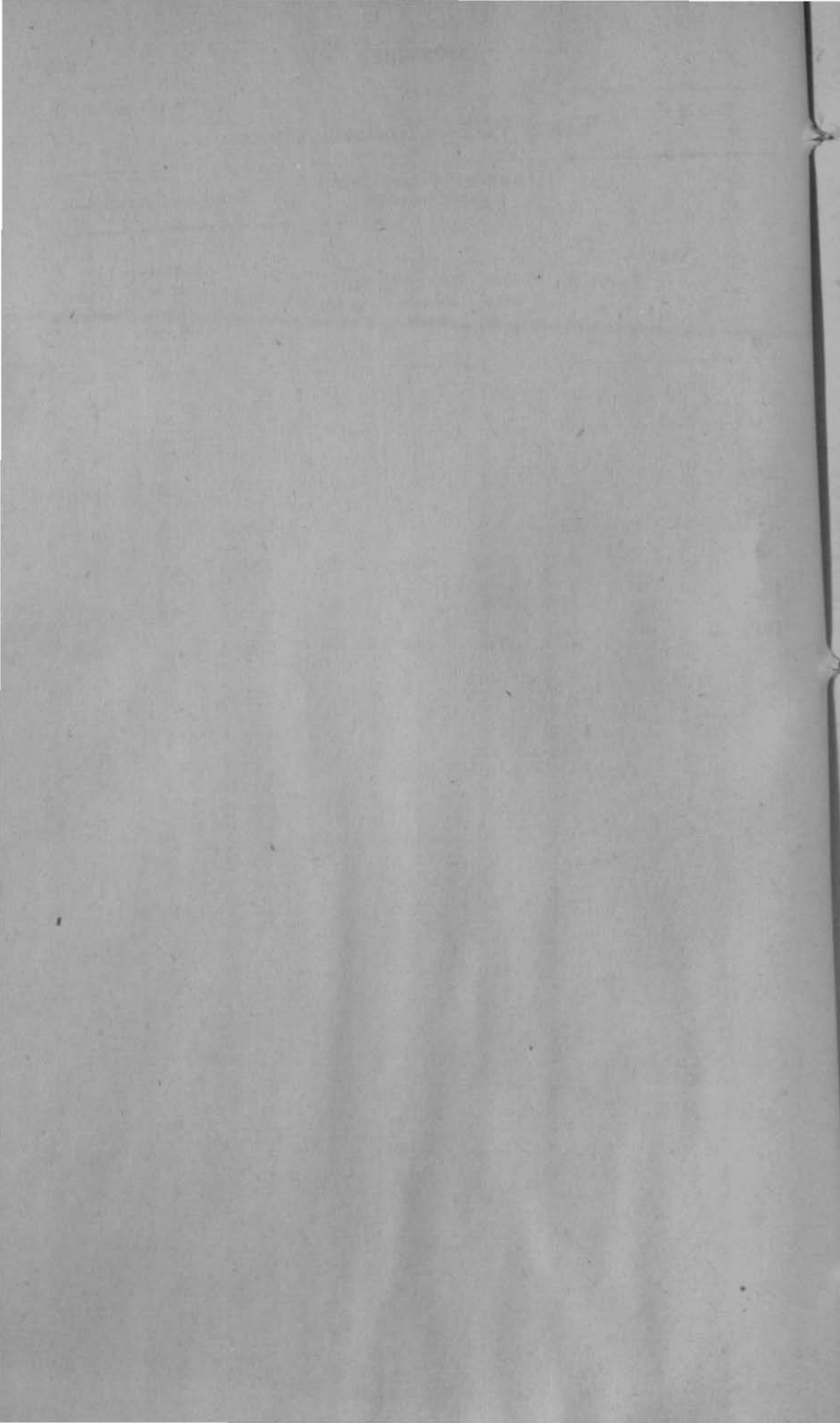


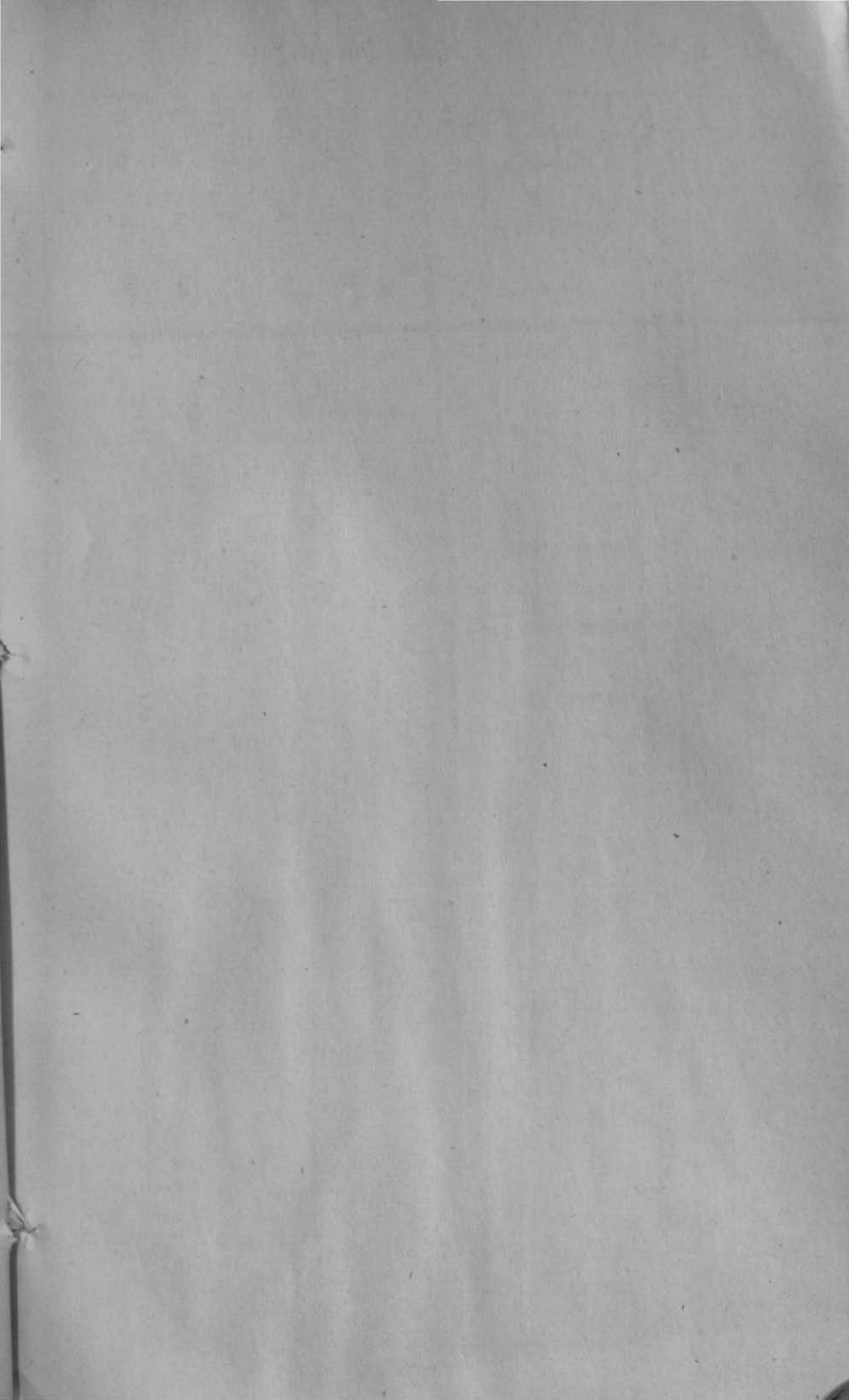


TABLE VIII.—*Cognizable crime.*

Year.	Number of cases investi- gated by police.			Number of persons—		
	<i>Suo motu.</i>	By orders of Magis- trate.	Sent up for trial.	Fried.	Acquit- ted or dis- charged.	Con- victed.
1	2	3	4	5	6	7
1908 .. ..	951	..	611	829	160	669
1909 .. ..	875	125	572	790	161	629
1910 .. ..	803	378	499	983	357	576
1911 .. ..	915	359	429	1,135	496	659
1912 .. ..	885	460	403	1,080	513	569

TABLE XI.—Excise.

Year.	Receipts from foreign liquors.		Country spirits.		Receipts from <i>tari</i> and <i>senikhi</i> .	Drugs.			Opium.		Total receipts.	Total charges.	Incidence of receipts per 10,000 of population from—			Number of shops for sale of—		
	Receipts.	Consumption in gallons.	Total receipts.	Consumption in mounds of—		Total receipts.	Total charges.	Total receipts.	Total charges.	Liquor, including <i>tari</i> .			Drugs.	Opium.	Country spirit.	Drugs.	Opium.	
				<i>Ganja</i>														<i>Charas</i> .
1	2	3	4	5	6	7	8	9	10	11	12	13	14	15	16	17	18	
	Rs.	Rs.		Rs.	Rs.	Mds. s.	Mds. s.	Rs.	Mds. s.	Rs.	Rs.	Rs.	Rs.	Rs.				
1908-9 ..	38	45,055	9,388	4	36,443	..	56 30	7,270	15 37	88,815	3,548	995	779	155	52	45	17	
1909-10 ..	63	50,464	12,005	..	31,651	..	20 3	10,153	14 3	94,939	4,343	1,075	659	216	48	42	17	
1910-11 ..	52	87,718	18,853	..	23,492	..	19 11	12,029	13 1	1,27,331	3,951	1,765	571	256	48	42	17	
1911-12 ..	80	94,440	21,934	..	31,697	..	20 4	13,747	12 21	1,43,970	4,108	2,095	674	292	48	42	17	
1912-13 ..	80	1,02,763	21,633	..	37,765	..	25 30	14,759	13 12	1,55,356	4,586	2,107	774	303	48	42	17	



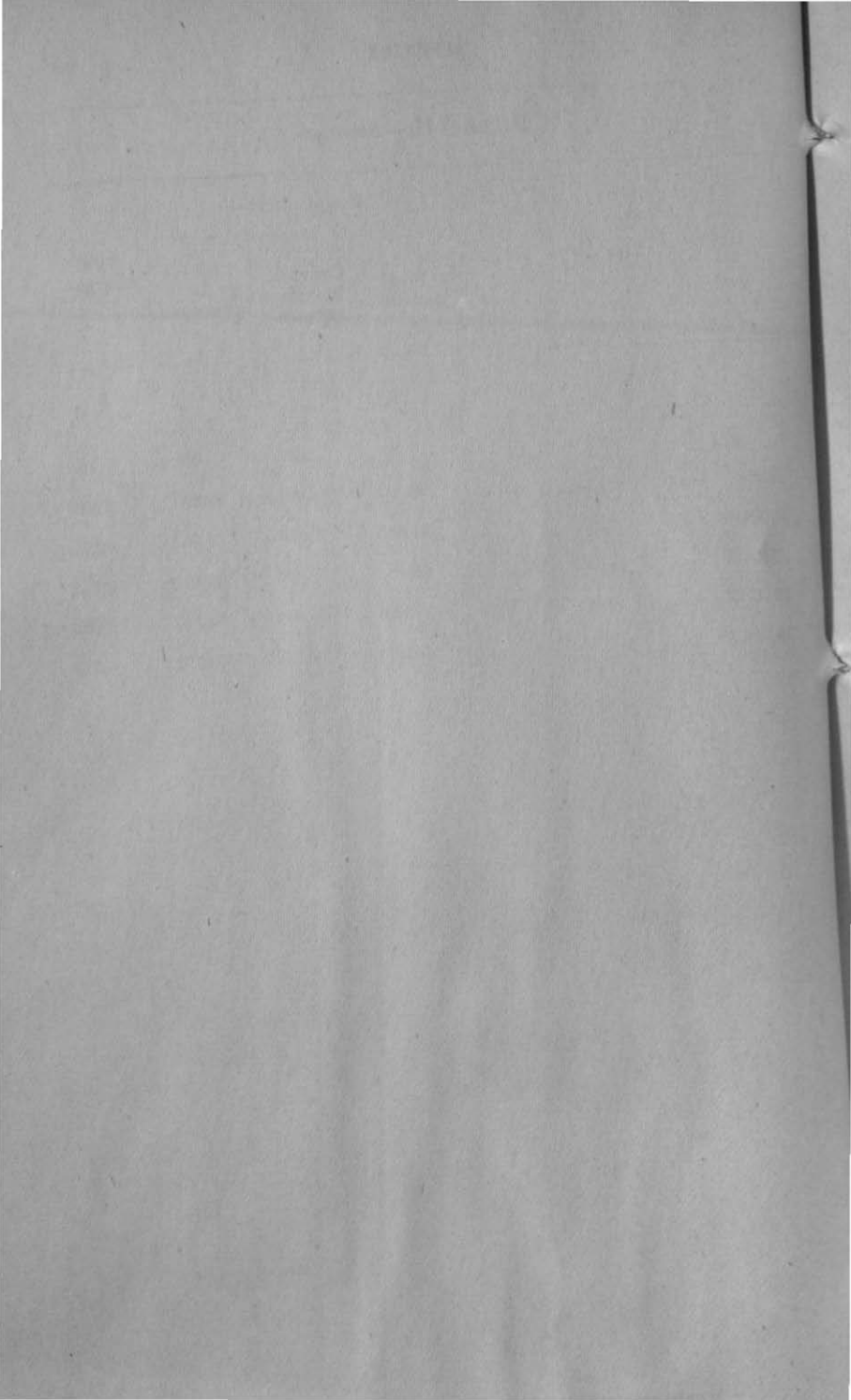
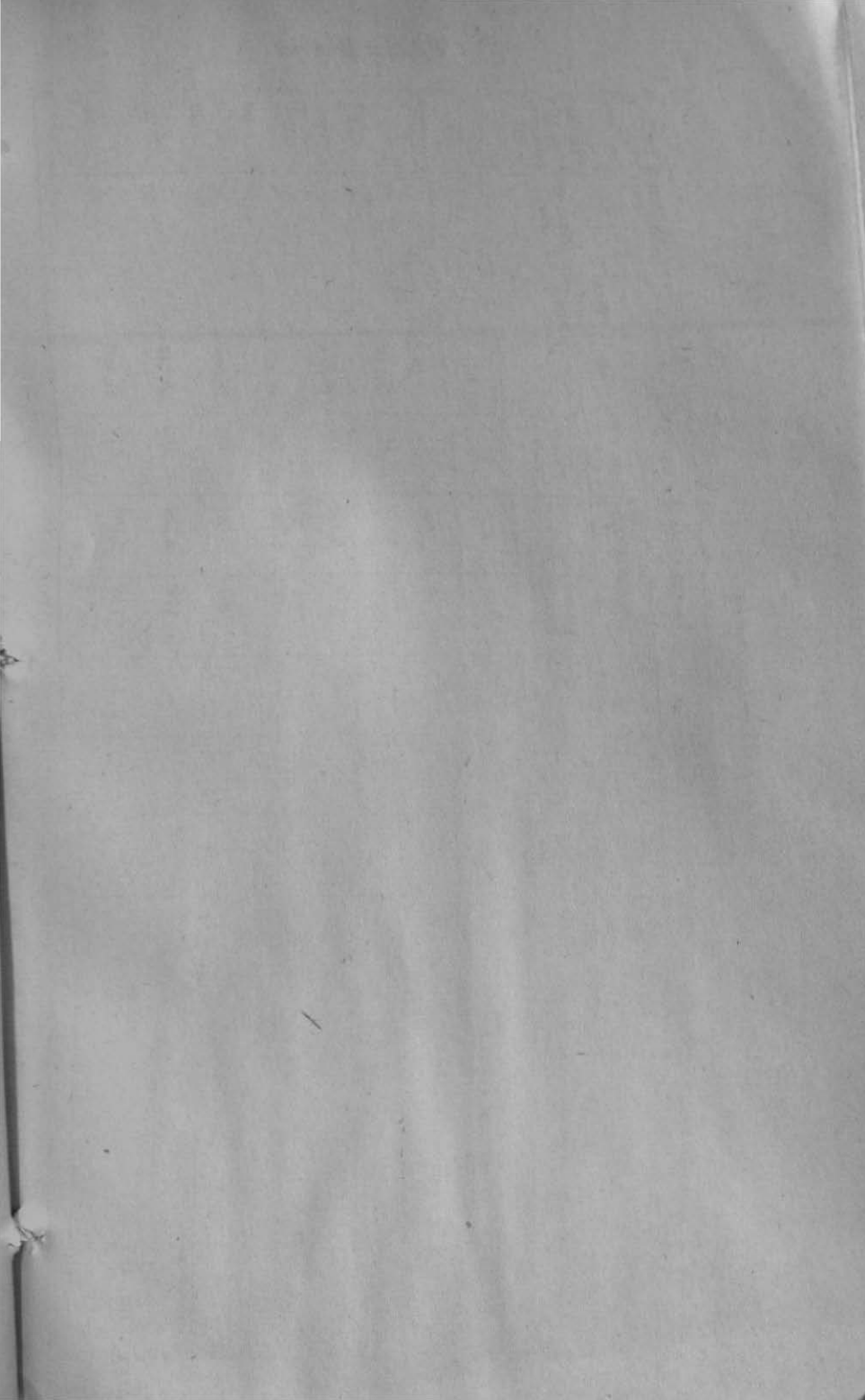


TABLE XII.—*Stamps.*

Year.	Receipts from—			Total charges.
	Non-Judicial.	Court-fee including copies.	All sources.	
1	2	3	4	5
	Rs.	Rs.	Rs.	Rs.
1908-9 .. .. .	26,317	61,960	89,241	3,340
1909-10 .. .. .	31,340	71,615	1,04,055	4,110
1910-11 .. .. .	26,981	67,140	95,129	3,142
1911-12 .. .. .	27,626	65,862	94,537	3,069
1912-13 .. .. .	33,589	65,113	1,00,767	3,619

TABLE XIII.—*Income-tax.*

Year.	Total receipts.	Collected by companies.		Profits of companies.		Other sources Part IV.				Total charges.	Objection under Part IV.	
		Asses-sees.	Tax.	Asses-ses	Tax.	Under Rs. 2,000.		Over Rs. 2,000.			Number filed.	Wholly or partly successful.
						Asses-sees.	Tax.	Asses-sees.	Tax.			
1	2	3	4	5	6	7	8	9	10	11	12	13
	Rs.		Rs.		Rs.		Rs.		Rs.	Rs.		
1907-8 .. ..	27,274	..	..	..	..	157	4,472	188	22,748	..	89	57
1908-9 .. ..	21,188	..	..	..	..	170	4,899	141	16,214	..	79	30
1909-10 .. ..	21,801	..	..	..	..	189	5,380	145	16,421	..	91	39
1910-11 .. ..	22,762	..	..	..	..	167	484	154	18,088	..	70	29
1911-12 .. ..	24,004	..	..	..	..	171	4,757	162	19,247	..	90	20
1912-13 .. ..	25,589	..	..	..	..	145	4,169	177	21,420	..	74	22



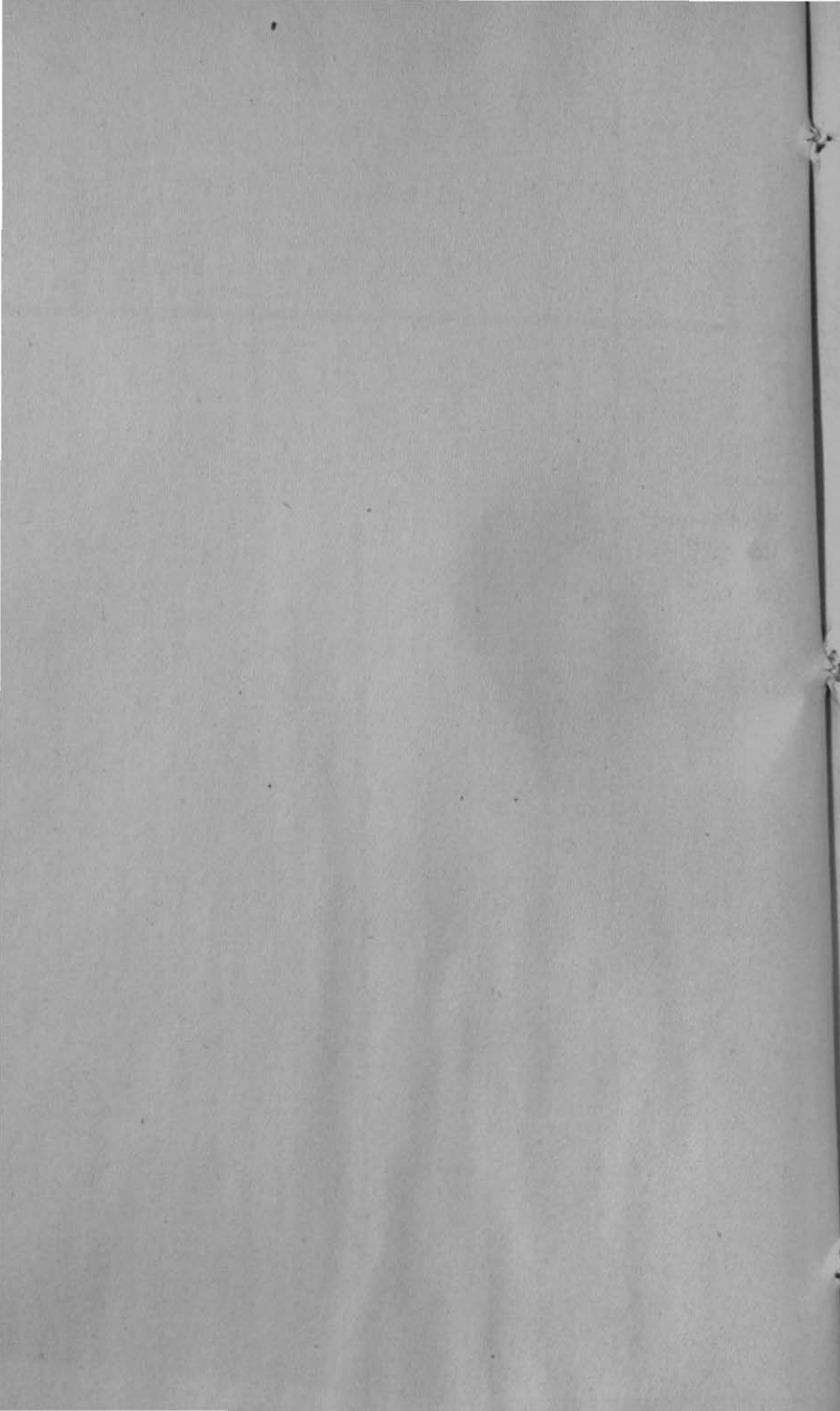


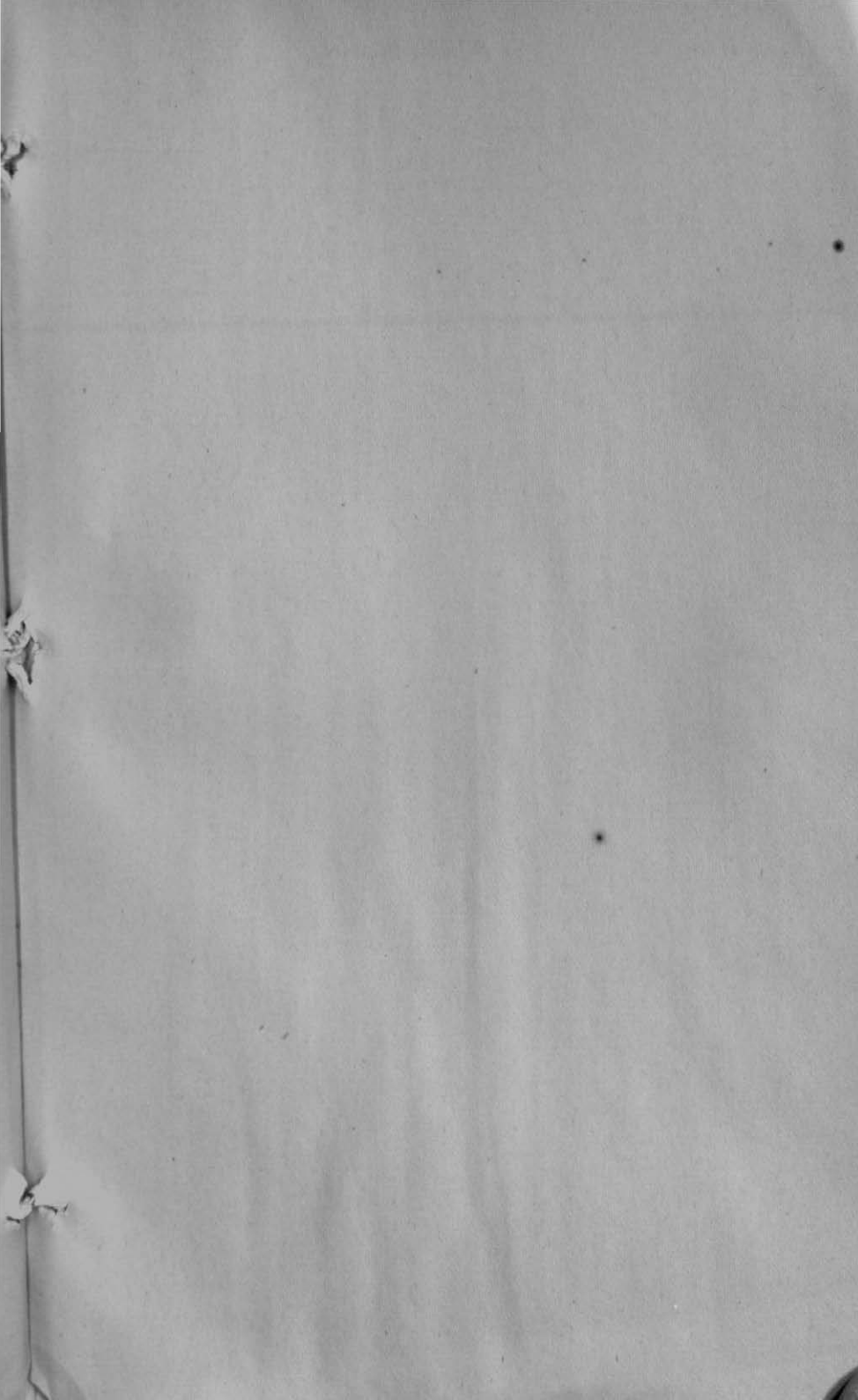


TABLE XIV.—Income tax by Tahsils (Part IV only).

Year.	Tahsil Bisalpur.				Tahsil Pilibhit.				Tahsil Puranpur.			
	Under Rs. 2,000.		Over Rs. 2,000.		Under Rs. 2,000.		Over Rs. 2,000.		Under Rs. 2,000.		Over Rs. 2,000.	
	Assesses.	Tax.	Assesses.	Tax.	Assesses.	Tax.	Assesses.	Tax.	Assesses.	Tax.	Assesses.	Tax.
1	2	3	4	5	6	7	8	9	10	11	12	13
1907-08..	58	1,573	72	9,078	81	2,359	94	11,574	18	540	22	2,095
1908-09..	62	1,770	38	4,274	85	2,400	87	10,405	23	729	16	1,535
1909-10..	68	1,890	46	5,262	90	2,613	86	9,951	31	877	13	1,208
1910-11..	61	1,616	53	6,057	86	2,585	88	10,777	20	573	13	1,254
1911-12..	59	1,641	55	6,263	82	2,254	93	11,761	30	862	14	1,223

TABLE XV.—District Board.

Year.	Receipts.							Expenditure.									
	Edu- ca- tion.	Medi- cal.	Scien- tific, &c.	Miscel- lane- ous.	Civil works.	Pounds.	Fer- ries.	Total expendi- ture.	Contri- butions to Pro- vincial fund.	Gene- ral ad- minis- tra- tion.	Edu- ca- tion.	Medi- cal.	Scien- tific, &c.	Miscel- lane- ous.	Civil works.	Pounds.	Debt.
1	2	3	4	5	6	7	8	9	10	11	12	13	14	15	16	17	18
	Rs.	Rs.	Rs.	Rs.	Rs.	Rs.	Rs.	Rs.	Rs.	Rs.	Rs.	Rs.	Rs.	Rs.	Rs.	Rs.	Rs.
1908-9 ...	10,437	3,696	..	86	3,816	9,052	639	85,240	..	1,817	35,380	11,043	719	196	33,301	2,340	441
1909-10..	1,90,927	4,747	..	104	4,823	7,525	700	1,20,143	..	2,998	37,950	11,204	642	245	60,508	1,995	4,606
1910-11..	7,222	8,973	..	91	5,929	8,203	339	1,15,458	..	3,274	35,508	12,603	1,032	345	60,089	2,048	529
1911-12..	45,223	8,636	300	729	32,532	9,764	697	1,31,017	..	3,109	33,465	13,234	841	..	78,074	2,268	20



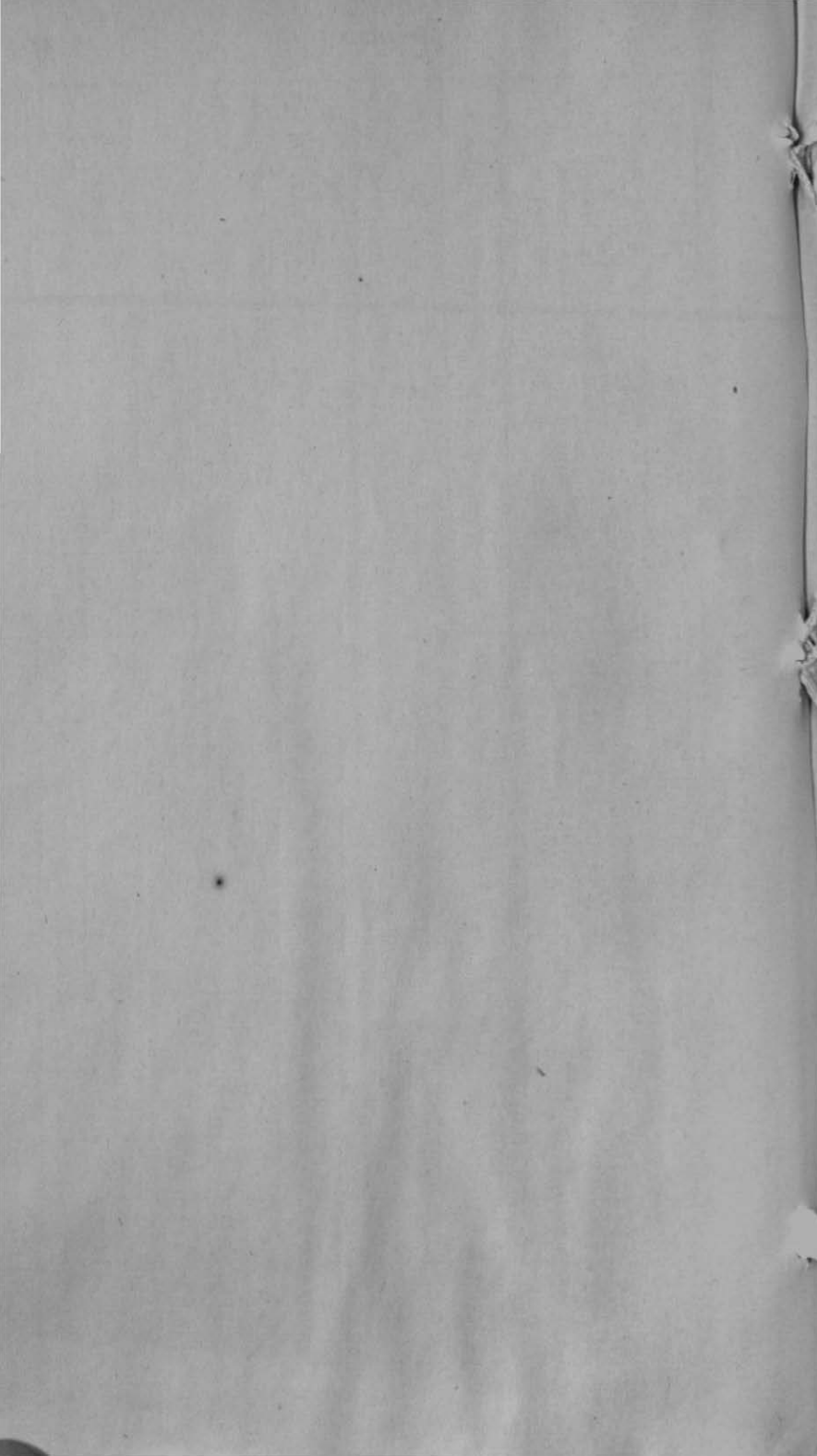


TABLE XVI.—Municipality of Pilibhit.

Year.	Income.							Expenditure.									
	Octroi.	Tax on houses and lands.	Other taxes.	Rents.	Loans.	Other sources.	Total.	Admini- stration and col- lection of taxes.	Public safety.	Water supply and drainage.		Con- ser- vancy.	Hospi- tals and dis- pen- saries.	Public works.	Public in- struc- tion.	Other heads.	Total.
										Capital.	Main- tenance.						
1	2	3	4	5	6	7	8	9	10	11	12	13	14	15	16	17	18
	Rs.	Rs.	Rs.	Rs.	Rs.	Rs.	Rs.	Rs.	Rs.	Rs.	Rs.	Rs.	Rs.	Rs.	Rs.	Rs.	Rs.
1908-9 ..	34,934	..	905	20,601	11,000	13,532	81,002	11,523	5,022	2,489	730	19,441	1,872	10,643	9,313	6,786	67,819
1909-10..	38,531	..	1,367	22,472	..	16,624	78,994	8,540	5,844	1,029	854	18,166	1,880	5,199	13,602	13,906	69,024
1910-11..	38,956	..	1,549	25,400	..	12,645	78,550	8,619	6,013	293	825	19,482	1,885	12,193	8,589	9,520	67,419
1911-12..	40,176	..	2,929	25,135	..	17,709	85,951	9,119	5,991	530	338	20,719	1,850	14,675	6,596	35,046	92,854
1912-13..	54,221	..	2,460	26,020	..	..	82,701	211	..	599	..	19,034	750	2,077	7,891	..	30,562

TABLE XVII.—Municipality of Bisalpur.

Year.	Income.							Expenditure.									
	Octroi.	Tax on houses and lands.	Other taxes.	Rents.	Loans.	Other sources.	Total.	Adminis- tration and collec- tion of taxes.	Public safety.	Water supply and drainage.		Con- ser- vancy.	Hospitals and dis- pen- saries.	Public works.	Public in- struc- tion.	Other heads.	Total.
										Capital.	Main- ten- ance.						
1	2	3	4	5	6	7	8	9	10	11	12	13	14	15	16	17	18
	Rs.	Rs.	Rs.	Rs.	Rs.	Rs.	Rs.	Rs.	Rs.	Rs.	Rs.	Rs.	Rs.	Rs.	Rs.	Rs.	Rs.
1908-9	6,601	..	728	236	..	1,024	9,195	3,012	778	74	715	2,467	199	1,097	598	1,279	10,219
1909-10	7,709	..	727	200	..	2,153	10,189	2,648	1,044	..	102	2,427	172	541	603	540	8,072
1910-11	8,178	..	835	109	..	1,048	10,830	2,877	1,070	..	30	2,756	155	1,296	605	1,106	9,895
1911-12	7,714	..	1,028	243	..	1,423	10,408	2,703	1,447	..	..	2,749	152	1,724	658	..	10,343
1912-13	12,210	..	1,073	710	..	1,471	15,464	1,421	900	..	..	2,892	50	2,435	..	6,963	14,661







TABLE XVIII.--*Education.*

Year.	Total.			Secondary education.			Primary education.		
	Schools and Colleges.	Scholars.		Schools.	Scholars.		Schools.	Scholars.	
		Males.	Fe- males		Males.	Fe- males		Males.	Females.
1	2	3	4	5	6	7	8	9	10
1907-8 ..	99	3,801	413	5	794	..	94	3,007	413
1908-9 ..	99	3,527	298	5	556	..	94	2,971	298
1909-10 ..	112	3,852	478	4	408	..	108	3,444	478
1910-11 ..	113	3,808	606	4	417	..	109	3,391	606
1911-12 ..	113	4,226	593	4	439	..	109	3,787	593

