

173/2

K44(h)

Betnal  
vol - 4

**WEST PAKISTAN CIVIL SECRETARIAT  
LIBRARY COPY**

(To be returned to the Library when done with)



3

---

---

CORRECTION LIST TO B VOLUME GAZETTEER,  
BETUL DISTRICT, FOR 1926-27.

---

---

## BETUL DISTRICT,

TABLE NO. 1.—Rainfall (in inches)

1	2	3	4	5	6	7	8	9	
1926-27	...	1'33	11'07	23'90	36'30	4'60	0'98	...	5'58

at Headquarters Station.

10	11	12	13	14	15	16	17	18	19
...	...	0'11	0'11	1'50	...	...	1'50	43'49	1926-27

TABLE NO. 6.—

1	2	3	4	5	6	
1927	...	17,174	47'21	11,770	32'35	58'64

Vital Statistics.

7	8	9	10	11	12	13	14	15
2	0'05	9	0'02	275	0'75	4,861	13'36	1927



## BETUL DISTRICT.

TABLE NO. 7.—General

1	2	3	4	5	6	7	
1926-27	...	2,501,996	758,927	1,743,069	416,318	159,107	575,425

## Statistics of Cultivation.

8	9	10	11	12	13	14	15
296,553	145,830	871,091	1,016,921	1,167,644	35,718	138,337	1926-27

TABLE NO. 7.—General

1	16	17	18	19	20	21	22	
1926-27	...	142,780	2,919	20,191	499,085	168,955	54,977	261,471

## Statistics of Cultivation.—(Concl'd.)

23	24	25	26	27	28	29
35,295	20,616	31	13,949	56,400	137,912	1926-27

BETUL DISTRICT.

TABLE NO. 8.—Outturn of Crops (Outturn in American

1	2	3	4	5	6	7
1926-27 ...	90	75	97½	...	82½	97½

Notation taking 100 to represent a Normal Crop).

8	9	10	11	12	13	14	15
97½	90	82½	97½	105	90	98	1926-27

TABLE NO. 9.—Loans (Principal and Interest.)

1	2	3	4	5	6	7	8
1926-27 ...	6,258	5,020	Pri. 3,281 Int. 557	(a) 3,485	537	...	1926-27

(a) Rs. 321 advance collection.

TABLE NO. 9.—Loans (Principal and Interest).—(Concl'd.)

1	2	3	4	5	6	7	8
1926-27 ..	21,677	19,158	Pri. 15,765 Int. 1,929	(a) 16,785	1,537	Pri. 60 Int. 11	1926-27

(a) Rs. 2,825 advance collection.

## BETUL DISTRICT.

TABLE NO. 10.—Forest

1	2	3	4	5	6		
1926-27	...	949	8	..	...	957	19,697

## Area and Revenue.

7	8	9	10	11	12	13
28,329	1,32,872	41,411	55,649	1,52,569	1,25,389	1926-27

TABLE NO. 11.—Retail Prices (in seers per rupee) of the District Staple

1	2	3	4	5	6	7	
1927	...	9'15	8'60	8'60	9'15	9'15	8'60

## Food-grain for each month of the decade at the Headquarters Town.

8	9	10	11	12	13	14	15
8'60	8'60	8'60	9'57	9'57	12'90	9'25	1927

## BETUL DISTRICT.

TABLE NO. 12.—Wages (monthly)

	1	2	3	4	5	6
1927	..	7'65	5'40	...	9'60	...

and Retail Prices (in seers per rupee).

7	8	9	10	11	12	13
8'05	12'00	8 to 12	30 to 40	20 to 40	35 to 40	1927

TABLE NO. 16.—Crime.

	1	2	3	4	5	6	7	8	9	10	11	12	13
1927	...	5	2	3	8	...	75	...	6	...	2	...	1927

TABLE NO. 17.—Criminal Justice.

	1	2	3	4	5	6	7	8	9	10	11	12
1927	...	913	591	220	392	83	198	111 Pend- ing.	...	...	...	1927

## BETUL DISTRICT.

TABLE NO. 18.—Civil and Revenue Business.

1	2	3	4	5	6	7
1927	...	2,078	137	237	1,228	447 1927

TABLE NO. 19.—Land Revenue and Cesses (total of all kinds of land revenue).

1	2	3	4	5	6	7	8	9	10	
1926-27	...	3,95,646	11	...	3,91,708	151	...	3,776	26	1926-27

## BETUL TAHSIL.

TABLE NO. 19. (a) Land Revenue and Cesses by Tahsils.

1	2	3	4	5
1926-27	...	1,44,564	1,44,539	12. Rs. 8 Advance collection adjusted. Rs. 5 remitted.
				1926-26

## MULTAI TAHSIL.

TABLE NO. 19 (b).—Land Revenue and Cesses by Tahsils.

1	2	3	4	5
1926-27	...	1,60,800	1,60,291	2,432 Rs. 77 advance collection adjusted.
				1926-27.

BETUL DISTRICT.  
BHAINSEHI TAHSIL.

TABLE NO. 19 (c).—Land Revenue and Cesses by Tahsils.

1	2	3	4	5
1926-27	...	82,906	82,834	...
				1926-27. Rs. 66 adjusted. Rs. 6 remission.

TABLE NO. 20.—

1	2	3	4	5	6	7	8	
1927	...	399	1,80,550	1,54,166	...	3,32,716	1,663	3,34,379

Excise (a).

9	10	11	12	13	14	15
20,440	18,895	39,335	12,230	6,903	19,133	1927

TABLE NO. 22.—General Revenue Statistics.

1	2	3	4	5	6	7	8	9	
1926-27	...	3,70,868	22,892	91,928	3,95,839	...	1,52,569	8,053	1926-27



## BETUL DISTRICT.

TABLE NO. 23.—Income and Expendi-

1	2	3	4	5	6	7	8	9
1926-27	.. 23,286	10,812	580	..	11	1,64,293	1,577	1,10,555

ture from District Funds,

10	11	12	13	14	15	16	17	18
9,028	5,716	59,267	8,521	30,873	3,583	11,241	1,28,229	1926-27

## BADNUR MUNICIPALITY.

TABLE NO. 24.—Income and

1	2	3	4	5	6	7	8	9	10	11	12	13	14
1926-27	8,011	7,385	...	3,165	1,282	207	...	3,570	1,453	1,109	9,481	35,663	3,007

Expenditure of Municipalities.

15	16	17	18	19	20	21	22	23	24	25	26	27	28
...	...	1,323	315	357	6,591	721	236	2,255	8,000	...	6,884	30,589	1926-27



# BETUL DISTRICT.

## MULTAI NOTIFIED AREA COMMITTEE.

TABLE NO. 24.—Income and

1	2	3	4	5	6	7	8	9	10	11	12	13	14	
1926-27	...	...	2,654	...	1,628	220	...	...	...	938	...	*13,480	18,980	1,090

### Expenditure of Municipalities.

15	16	17	18	19	20	21	22	23	24	25	26	27	28
868	...	464	461	317	2,021	305	24	3,432	...	...	2,911	11,893	1926-27

\*It includes Government grant received for Multai Ganj work.

## BETUL-BAZAR NOTIFIED AREA COMMITTEE.

TABLE NO. 24.—Income and

1	2	3	4	5	6	7	8	9	10	11	12	13	14	15
1926-27	...	...	1,307	...	860	...	...	...	...	1,477	...	791	4,435	683

### Expenditure of Municipalities.

16	17	18	19	20	21	22	23	24	25	26	27	28
...	197	...	47	2,567	461	...	234	...	...	1,335	5,524	1926-27

BETUL DISTRICT.

TABLE NO. 26.—Education—Number of

1	2	3	4	5	6	7	8	9	
1926-27	...	8	970	...	98	2,573	313	77,759	15,995

Institutions and Scholars.

10	11	12	13	14	15	16	17
8,353	4,696	1,06,713	62,554	44,159	2'84	0'42	1926-27

BETUL DISTRICT.

TABLE NO. 27.—

Dispensaries.	Betul Main.		Multai.		Bhainsdehi.		Athnair.	
Number of beds available.	23		6		...		...	
Year.	Daily average.		Daily average.		Daily average.		Daily average.	
	Indoor patients.	Outdoor patients.	Indoor patients.	Outdoor patients.	Indoor patients.	Outdoor patients.	Indoor patients.	Outdoor patients.
1	2	3	4	5	6	7	8	9
1927	13'08	91'94	1'68	49'01	0'73	29'52	...	11'25

Dispensaries.

Shahpur.		Income of Dispensaries.					Year.
Daily average.		From Government.	Local Funds.	Subscriptions.	Other sources.	Total.	
Indoor patients.	Outdoor patients.						
10	11	12	13	14	15	16	17
...	34'77	10,291	5,487	8,247	417	24,442	1927

## BETUL DISTRICT.

TABLE NO. 28.—Vaccination.

1	2	3	4	5	6	7	8
1926-27 ...	10,552	1,509	3584	10,967	96	953	1926-27



17312



# Central Provinces District Gazetteers

\_\_\_\_\_

**BETUL DISTRICT**

\_\_\_\_\_

3 K4444

4

Dated .....

## B. VOLUME STATISTICAL TABLES 1891—1926



Corrected up to 1926

NAGPUR:

PRINTED AT THE GOVERNMENT PRESS

1928

*Agents for the sale of Publications issued by the Central Provinces Government.*

[NOTE.—Appointments of all Official Agents in the United Kingdom and on the Continent for the sale of Government Publications have been terminated with effect from the 1st April 1925.

All publications in future are obtainable either direct from the High Commissioner for India, 42 Grosvenor Gardens, London, S. W. 1, or through any bookseller.]

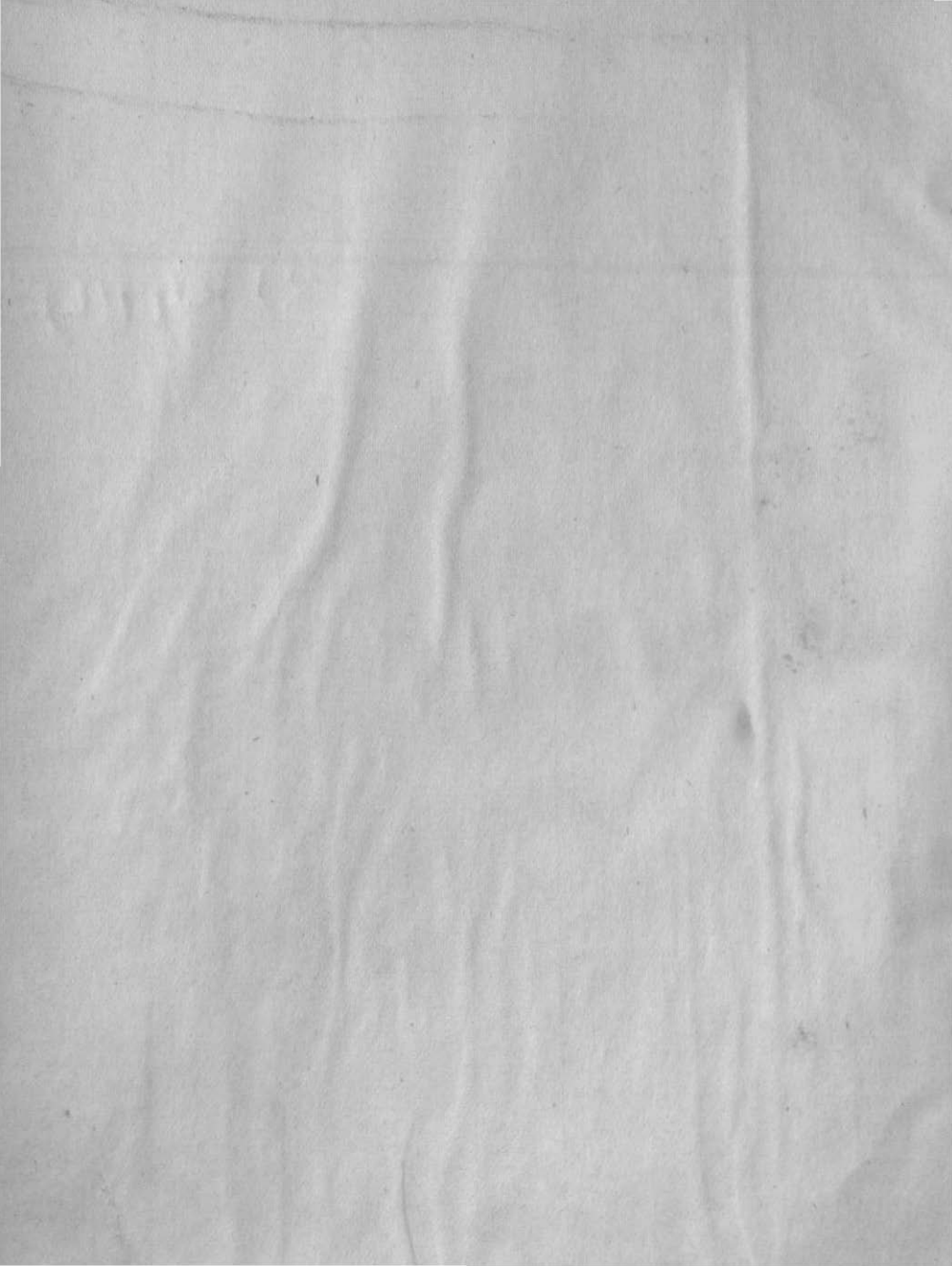
**IN INDIA AND CEYLON.**

- THACKER, SPINK & Co., Calcutta and Simla.  
NEWMAN & Co., Calcutta.  
R. CAMBRAY & Co., Calcutta.  
S. K. LAHIRI & Co., Calcutta.  
BUTTERWORTH & Co. (INDIA), LTD., 8-2, Hastings Street, Calcutta.  
THE INDIAN SCHOOL SUPPLY DEPOT, Calcutta.  
THE WELDON LIBRARY, 18/5, Chowringhee Road, Calcutta.  
M. C. SIRCAR & SONS, 75, Harrison Road, Calcutta.  
THE ASSOCIATION PRESS, Calcutta.  
THE PROPRIETOR, International Buddhist Book Depôt, 4, Chandney Chowk, 1st Lane, Calcutta.  
A. J. COMBRIDGE & Co., Bombay.  
THACKER & Co., LTD., Bombay.  
RADHABAI ATMARAM SAGOON, Bombay.  
SUNDER PANDURANG, 25, Kalbadevi Road, Bombay.  
RAMCHANDRA GOVIND & SON, Booksellers, Kalbadevi, Bombay.  
D. B. TARAPOREVALA, SONS & Co., Booksellers, etc., 190, Hornby Road, Fort, Bombay.  
A. J. COMBRIDGE & Co., Madras.  
HIGGINBOTHAM & Co., Madras.  
V. KALYANARAM IYER & Co., Madras.  
G. A. NATESAN & Co., Madras.  
S. MURTHY & Co., Madras.  
THOMPSON & Co., Madras.  
TEMPLE & Co., Madras.  
RAI SAHIB M. GULAB SINGH & SONS, Lahore.  
N. B. MATHUR, Superintendent, Nazair Kanun Hind Press, Allahabad.  
THE PROPRIETOR, NEWAL KISHORE PRESS, Lucknow.  
A. H. WHEELER & Co., Allahabad, Calcutta and Bombay.  
SUPERINTENDENT, American Baptist Mission Press, Rangoon.  
MANAGER, General Book Depôt, Nagpur and Jubbulpore.  
AIDAN BINZANI, Proprietors, Karmvir Book Depôt, Mahal, Nagpur.  
THE MANAGER, "The Hitawad," Nagpur.  
MR. G. G. KHOT, Walker Road, Nagpur.  
MR. G. A. SHASTRI, Bookseller and Publisher, Hislop College Road, Nagpur City.  
MR. M. A. SUBHAN, Bookseller and Publisher, Bilaspur.  
A. M. & J. FERGUSON, Booksellers, Ceylon.  
BABU S. C. TALUQDAR, Proprietor, Students & Co., Cooch Behar.  
THE STANDARD BOOKSTALL, Karachi.  
KARSANDAS NARANDAS & SONS, Surat.  
MUNSHI SEETA RAM, Managing Proprietor, Indian Army Book Depôt, Juhu, Cawnpore.  
THE PROPRIETORS, New Kitabkhana, Poona.  
THE OXFORD BOOK AND STATIONERY Co., Delhi.  
THE PATNA LAW PRESS, Co., Patna.  
THE UPPER INDIA PUBLISHING HOUSE LTD., Booksellers and Publishers, 41, Aminabad Park, Lucknow.  
THE BOOK COMPANY, Booksellers and Stationers, 4-4/A, College Street, Calcutta.  
THE PROPRIETOR, Shri Ramdas Stores Tajnapeth, Akola,

# INDEX

---

TABLE	TITLE.	PAGE.
1.	Rainfall (in inches) at Head-quarters Station ... ..	2
2.	Statistics of Area and Population and Variation in Population for Tahsils ...	4
3.	Variation in population of Towns since 1872 ... ..	<i>ibid.</i>
4.	Castes over 3,000 (arranged in order of precedence) ... ..	6
5.	Language ... ..	8
6.	Vital Statistics ... ..	10
7.	General Statistics of Cultivation ... ..	12
8.	Outturn of Crops (Outturn in American Notation, taking 100 to represent a Normal Crop) ... ..	20
9.	Loans (Principal and Interest) ... ..	24
10.	Forest Area and Revenue ... ..	28
11.	Retail Prices (in seers per rupee) of the District Staple Food-grain for each month of the decade at the Head-quarters Town ... ..	32
12.	Wages (Monthly) and Retail Prices (in seers per rupee) ... ..	36
13.	Railway Stations ... ..	40
14.	Roads maintained by the Public Works Department and the District Council with Ferries, Dāk and Inspection Bungalows and Encamping-grounds on them ...	42
15.	Post and Telegraph Offices ... ..	46
16.	Crime ... ..	48
17.	Criminal Justice ... ..	50
18.	Civil and Revenue Business ... ..	52
19.	Land Revenue and Cesses ... ..	54
20.	Excise ... ..	62
21.	Income-tax ... ..	66
22.	General Revenue Statistics ... ..	68
23.	Income and Expenditure from District Funds ... ..	70
24.	Income and Expenditure of Municipalities ... ..	74
25.	Education—Literacy (with figures of religion) ... ..	82
26.	Education—Number of Institutions and Scholars ... ..	84
27.	Dispensaries ... ..	88
28.	Vaccination ... ..	92
29.	Polymetrical Table of Distances ... ..	94
30.	Local Weights and Measures ... ..	95
▲	APPENDIX—Notes to supplement, correct or enlarge the information contained in the A Volume Gazetteer of the Betul district ... ..	97





## Betul District.

TABLE No. 1.—Rainfall (in

(This Table is taken from the statement of

Year.	June.	July.	August.	Total early monsoon.	Septem- ber.	October.	Nov. mber.	Total late monsoon.
1	2	3	4	5	6	7	8	9
	Inches.	Inches.	Inches.	Inches.	Inches.	Inches.	Inches.	Inches.
Average of 43 years ending								
1910-11 ...	7.61	13.22	11.72	32.55	7.17	1.90	0.47	0.54
1891-92 ...	0.37	15.79	9.04	25.20	21.82	1.27	...	23.09
1892-93 ...	5.70	12.32	10.24	28.26	13.88	1.56	0.04	15.48
1893-94 ...	6.06	4.48	13.10	24.54	11.26	0.41	2.70	14.37
1894-95 ...	8.64	13.94	9.10	31.95	11.41	8.12	0.59	20.12
1895-96 ...	8.21	5.19	15.84	29.24	3.74	0.64	...	4.38
1896-97 ...	7.31	13.49	15.06	36.76	0.04	...	0.14	0.18
1897-98 ...	3.96	16.67	16.56	37.19	8.86	0.17	...	9.06
1898-99 ...	10.39	13.93	13.35	37.67	3.70	1.09	...	4.79
1899-1900 ...	2.82	5.69	1.86	10.37	0.35	...	...	0.35
1900-01 ...	1.48	15.05	19.33	35.86	16.25	...	...	16.25
1901-02 ...	6.58	17.18	13.93	37.69	2.13	0.21	...	2.34
1902-03 ...	2.00	13.79	9.46	25.34	5.34	2.91	1.31	9.56
1903-04 ...	3.58	15.47	12.72	31.77	10.01	2.72	...	12.73
1904-05 ...	2.70	7.12	6.19	16.10	6.69	1.03	...	7.72
1905-06 ...	2.78	15.58	8.63	26.99	19.47	...	...	19.47
1906-07 ...	12.16	14.72	16.08	42.26	5.51	...	...	5.51
1907-08 ...	2.62	5.16	15.14	22.92	2.1	...	1.14	1.37
1908-09 ...	8.37	14.60	9.97	32.94	3.60	0.60	...	4.20
1909-10 ...	5.20	7.40	7.81	20.41	4.59	...	...	4.59
1910-11 ...	8.16	7.55	20.19	36.10	10.59	2.28	5.86	18.73
1911-12 ...	4.26	3.30	0.44	17.00	10.16	1.50	3.03	13.69
1912-13 ...	2.23	13.31	12.26	27.80	7.03	...	2.12	9.15
1913-14 ...	4.73	19.09	13.91	37.73	6.40	1.12	...	6.52
1914-15 ...	7.03	12.61	7.01	26.65	7.88	...	3.1	8.19
1915-16 ...	7.49	12.21	7.02	26.72	5.80	4.62	0.68	10.50
1916-17 ...	13.02	12.83	15.07	41.82	13.82	11.15	1.66	26.63
1917-18 ...	5.75	13.33	12.63	31.71	12.89	4.70	...	17.59
1918-19 ...	8.30	3.96	4.98	17.24	9.8	1.17	1.40	1.55
1919-20 ...	...	...	...	...	...	...	...	...
1920-21 ...	2.32	9.04	6.00	17.36	4.26	...	...	4.26
1921-22 ...	9.87	12.39	9.20	31.46	7.14	...	...	7.14
1922-23 ...	0.88	11.66	3.62	25.16	18.83	...	1.43	20.26
1923-24 ...	0.41	24.89	12.72	37.61	8.47	1.33	1.43	1.76
1924-25 ...	2.88	13.57	13.45	29.90	6.50	4.16	...	10.66
1925-26 ...	4.43	12.33	11.07	27.73	2.19	...	2.79	4.98

# Retail District

TABLE No. 1—Retail District  
This Table is taken from the statement

Year	Month	Day	Item	Quantity	Value	Percentage
1917	Jan	1	...	...	...	...
1917	Jan	2	...	...	...	...
1917	Jan	3	...	...	...	...
1917	Jan	4	...	...	...	...
1917	Jan	5	...	...	...	...
1917	Jan	6	...	...	...	...
1917	Jan	7	...	...	...	...
1917	Jan	8	...	...	...	...
1917	Jan	9	...	...	...	...
1917	Jan	10	...	...	...	...
1917	Jan	11	...	...	...	...
1917	Jan	12	...	...	...	...
1917	Jan	13	...	...	...	...
1917	Jan	14	...	...	...	...
1917	Jan	15	...	...	...	...
1917	Jan	16	...	...	...	...
1917	Jan	17	...	...	...	...
1917	Jan	18	...	...	...	...
1917	Jan	19	...	...	...	...
1917	Jan	20	...	...	...	...
1917	Jan	21	...	...	...	...
1917	Jan	22	...	...	...	...
1917	Jan	23	...	...	...	...
1917	Jan	24	...	...	...	...
1917	Jan	25	...	...	...	...
1917	Jan	26	...	...	...	...
1917	Jan	27	...	...	...	...
1917	Jan	28	...	...	...	...
1917	Jan	29	...	...	...	...
1917	Jan	30	...	...	...	...
1917	Jan	31	...	...	...	...
1917	Feb	1	...	...	...	...
1917	Feb	2	...	...	...	...
1917	Feb	3	...	...	...	...
1917	Feb	4	...	...	...	...
1917	Feb	5	...	...	...	...
1917	Feb	6	...	...	...	...
1917	Feb	7	...	...	...	...
1917	Feb	8	...	...	...	...
1917	Feb	9	...	...	...	...
1917	Feb	10	...	...	...	...
1917	Feb	11	...	...	...	...
1917	Feb	12	...	...	...	...
1917	Feb	13	...	...	...	...
1917	Feb	14	...	...	...	...
1917	Feb	15	...	...	...	...
1917	Feb	16	...	...	...	...
1917	Feb	17	...	...	...	...
1917	Feb	18	...	...	...	...
1917	Feb	19	...	...	...	...
1917	Feb	20	...	...	...	...
1917	Feb	21	...	...	...	...
1917	Feb	22	...	...	...	...
1917	Feb	23	...	...	...	...
1917	Feb	24	...	...	...	...
1917	Feb	25	...	...	...	...
1917	Feb	26	...	...	...	...
1917	Feb	27	...	...	...	...
1917	Feb	28	...	...	...	...
1917	Feb	29	...	...	...	...
1917	Feb	30	...	...	...	...
1917	Mar	1	...	...	...	...
1917	Mar	2	...	...	...	...
1917	Mar	3	...	...	...	...
1917	Mar	4	...	...	...	...
1917	Mar	5	...	...	...	...
1917	Mar	6	...	...	...	...
1917	Mar	7	...	...	...	...
1917	Mar	8	...	...	...	...
1917	Mar	9	...	...	...	...
1917	Mar	10	...	...	...	...
1917	Mar	11	...	...	...	...
1917	Mar	12	...	...	...	...
1917	Mar	13	...	...	...	...
1917	Mar	14	...	...	...	...
1917	Mar	15	...	...	...	...
1917	Mar	16	...	...	...	...
1917	Mar	17	...	...	...	...
1917	Mar	18	...	...	...	...
1917	Mar	19	...	...	...	...
1917	Mar	20	...	...	...	...
1917	Mar	21	...	...	...	...
1917	Mar	22	...	...	...	...
1917	Mar	23	...	...	...	...
1917	Mar	24	...	...	...	...
1917	Mar	25	...	...	...	...
1917	Mar	26	...	...	...	...
1917	Mar	27	...	...	...	...
1917	Mar	28	...	...	...	...
1917	Mar	29	...	...	...	...
1917	Mar	30	...	...	...	...
1917	Mar	31	...	...	...	...

inches) at Headquarters Station.

rainfall attached to the Season and Crop Report.)

December.	January.	February.	Total cold weather rains.	March.	April.	May.	Total hot weather rains.	Total for the year.	Year.
10	11	12	13	14	15	16	17	18	19
Inches.	Inches.	Inches.	Inches.	Inches.	Inches.	Inches.	Inches.	Inches.	Average of 43 years ending
0'47	0'51	0'20	1'27	0'52	0'24	0'41	1'17	44'53	1910-11
...	...	0'16	0'16	...	...	0'06	0'06	48'51	1891-92
2'15	1'61	...	1'76	2'79	0'07	2'20	5'06	50'56	1892-93
...	0'20	...	0'20	0'35	0'01	...	0'36	39'47	1893-94
0'18	0'04	0'70	0'92	0'51	1'25	...	1'76	54'78	1894-95
0'08	...	...	0'08	...	0'02	0'06	0'08	33'78	1895-96
2'33	1'80	0'09	4'22	...	0'06	0'09	0'15	40'31	1896-97
...	...	1'18	1'18	...	0'11	...	0'11	47'54	1897-98
...	...	0'96	0'96	...	0'41	0'94	1'35	44'77	1898-99
...	0'26	0'15	0'41	...	0'04	0'10	0'12	11'25	1899-1900
0'55	4'49	0'20	5'24	2'95	0'49	0'23	3'67	61'02	1900-01
...	0'07	0'02	0'09	...	0'20	...	0'20	40'32	1901-02
0'75	0'26	...	1'01	...	...	1'60	1'60	37'51	1902-03
...	...	0'12	'12	'51	...	05	'55	45'18	1903-04
1'09	'02	'34	1'45	...	...	'22	'22	25'49	1904-05
...	...	'27	'27	1'03	...	'13	1'16	47'89	1905-06
'53	'46	4'04	5'03	...	1'58	'22	1'80	55'30	1906-07
'04	'01	...	'05	1'34	1'52	...	2'86	27'20	1907-08
'10	'34	'18	'62	'12	'23	2'10	2'45	40'21	1908-09
3'28	...	...	3'28	...	...	...	...	28'28	1909-10
...	'38	...	'38	'18	...	...	'18	55'39	1910-11
...	...	1'73	1'73	...	'22	...	'22	32'64	1911-12
'07	...	'13	'20	'70	'03	'34	1'27	35'42	1912-13
'62	...	'07	1'31	1'28	1'39	'41	3'08	48'65	1913-14
'26	'05	1'45	1'76	3'72	'15	'17	4'04	40'64	1914-15
'25	...	'15	'40	...	...	'85	'85	38'47	1915-16
...	...	1'29	1'29	2'04	...	2'62	4'66	74'40	1916-17
...	...	'40	'40	'37	...	'78	'15	50'85	1917-18
'42	3'06	'35	3'83	'05	'22	'71	'98	23'60	1918-19
...	...	...	...	...	...	...	...	...	1919-20
...	0'53	...	0'53	...	...	...	...	22'15	1920-21
...	2'65	'76	3'41	...	...	'05	'05	42'06	1921-22
'19	'16	...	'35	1'61	'41	'56	2'58	48'35	1922-23
...	2'28	'13	2'41	'13	'5	...	0'18	49'41	1923-24
1'15	...	...	1'05	...	...	1'50	1'50	41'11	1924-25
...	1'45	'21	1'66	'36	1'34	1'10	2'70	37'17	1925-26

## Betul District.

TABLE No. 2.—Statistics of Area and  
(This Table has been compiled from Imperial

Tahsil.	Area.	Number of towns.	Number of villages.	Number of occupied houses.	Population, 1911.			Density per square mile.	
					Males.	Females.	Total.	Total.	Rural.
1	2	3	4	5	6	7	8	9	10
Betul ..	1,802	2	498	27,400	63,814	65,238	1,20,052	72	65
Multai ...	969	...	371	29,446	74,823	77,138	1,51,061	157	15
Bhainsdehi ..	1,101	...	390	16,085	40,954	41,770	82,724	75	75
<b>Total</b> ...	<b>3,872</b>	<b>2</b>	<b>1,259</b>	<b>72,991</b>	<b>1,79,591</b>	<b>1,84,146</b>	<b>3,63,737</b>	<b>94</b>	<b>91</b>

\*Tahsil figures include only Hindu, Animist and Muhammadan literates as literacy

## Betul District.

TABLE No. 3.—Variation in  
(This Table has been compiled from

Towns.	Population.					Percentage		
	1931.	1911.	1891.	1881.	1872.	1901—1911.	1891—1901.	—
1	2	3	4	5	6	7	8	9
Betul ..	5,773	5,473	4,739	5,260	4,693	4,593	+5.5	+15.9
Badnur ..	6,954	7,454	5,566	5,014	2,881	2,881	-6.7	+33.9

## Population and Variation in Population for Tahsils.

(Census Table V and the Provincial Census Tables I and II.)

—		Population, 1901.	Population, 1891.	Population, 1881.	Percentage of increase or decrease 1901-1911.	Percentage of increase or decrease, 1891-1901.	Percentage of increase or decrease, 1881-1891.	Number of literate persons.
11	12	13	14	15	16	17	18	19
1,50,493	1,11,440	...	1,87,383	-14'24	+35'04	...	+3'9	4,000
1,54,525	1,18,951	...	1,17,522	-1'65	+29'90	...	+9'3	4,205
85,368	57,416	...		-3'09	+48'68	...	...	2,018
3,90,386	2,87,807	*3,26,587 *Due to adjustment.	3,04,905	-6'82	+35'64	-11'87	+5'9	*11,290

<sup>f</sup>or the Christian and minor religions was not sorted for smaller Units than the district.

## Population of towns since 1872.

(Census Imperial Tables IV and V.)

of variation.		Religions, 1911.						Remarks.
1881-1891.	1872-1881.	—	Hindu.	Musalman.	Jain.	Christian.	Others.	
10	11	12	13	14	15	16	17	18
-10	+12	+2	5,368	247	43	...	115	
+11	+74	...	5,003	1,358	93	117	383	

## Betul District.

TABLE No. 4.—Caste over 3,000 (arranged in order of precedence).

Caste.		Persons according to census of 1921.	Percentage of population.	Remarks.
1		2	3	4
<b>GROUP I (a).</b>				
<i>Twice-born castes (wearing the sacred thread).</i>				
Brahman	...	4,273	1	
Rajput	...	6,099	2	
Kayasth	...	559	2	
Bania	...	2,410	7	
Total Group I (a)		13,341	4	
<b>GROUP II (a)</b>				
<i>Higher cultivators (from whom a Brahman takes water).</i>				
Ahir	...	3,351	9	
Kurmi	...	7,628	2	
Kunbi	...	35,356	10	
Mali	...	4,322	1	
Kirar	...	9,369	3	
Maratha	...	1,394	4	
Total Group II (a)		61,420	17	
<b>GROUP II (b).</b>				
<i>Higher artisans (from whom a Brahman takes water).</i>				
Barhai	...	3,178	9	
Sunar	...	3,407	9	
Total Group II (b)		6,585	2	
<b>GROUP II (c).</b>				
<i>Serving castes (from whom a Brahman takes water).</i>				
Dhimar	...	2,632	7	
Nai	...	3,429	9	
Total Group II (c)		6,061	2	



## Betul District.

TABLE No. 4.—Caste over 3,000 (arranged in order of precedence)—(concl'd.)

Caste.	Persons according to census of 1921.	Percentage of population.	Remarks.
1	2	3	4
GROUP III (a).			
<i>Lower cultivating and labouring castes.</i>			
Bhojar .. .. .	22,014	6	
Total Group III (a).	22,014	6	
GROUP III (b).			
<i>Lower artisans, Trading and Miscellaneous castes.</i>			
Kalar .. .. .	3,729	1	
Teli .. .. .	8,868	2	
Lohar .. .. .	4,174	1	
Total Group III (b)	16,771	7	
GROUP IV.			
<i>Forest Tribes.</i>			
Gowari .. .. .	...		
Gond .. .. .	99,742	25	
Korku .. .. .	32,606	9	
Pardhan .. .. .	2,366	7	
Total Group IV	134,714	37	
GROUP V.			
<i>Impure castes.</i>			
Katia .. .. .	3,009	8	
Mehra .. .. .	31,073	9	
Chamar .. .. .	3,503	1	
Total Group V	37,585	10	
<i>Others.</i>			
Musalman .. .. .	6,451	2	
European and Anglo-Indian .. .. .	117	'03	
Indian Christian .. .. .	421	1	



## Betul District.

TABLE No. 5.—Language.

(This Table has been prepared from Census Table No. X.)

Name of Language.	Number of persons speaking the language.	Remarks.
1	2	3
Hindi	162,694	*Details of the minor Languages.
Urdu	483	Bengali ... 50
Marwari	51	Nimari ... 4
Marathi	63,692	Razarki ... 17
Gujarati	531	Konda ... 60
Punjabi	115	Kachhi ... 11
Gondi	112,731	Kabuli ... 7
Telugu	16	Tamil ... 4
Korku	22,817	153
Banjari	342	
English	112	
Other minor Languages	*153	

## Betul District.

TABLE No. 6.—

(This Table has been compiled from

Year.	Births.		Deaths.		Percentage of deaths under 5 years of age to total.
	Total.	Per mille of population.	Total.	Per mille of population.	
1	2	3	4	5	6
1891	14,733	45.59	9,563	29.59	50.20
1892	13,820	42.18	9,335	28.49	17.99
1893	11,959	36.17	9,019	27.28	51.98
1894	13,010	39.64	15,444	47.06	41.22
1895	13,606	41.65	15,154	46.39	46.48
1896	11,680	35.83	12,277	37.65	42.26
1897	10,359	33.13	23,769	76.03	35.79
1898	9,594	30.47	7,374	23.42	42.22
1899	15,233	47.56	9,642	30.09	48.71
1900	10,615	34.82	26,212	85.98	38.12
1901	9,875	34.60	6,124	21.46	43.98
1902	15,598	54.66	7,135	25.00	55.95
1903	14,290	50.07	8,231	28.84	57.04
1904	19,019	66.65	7,857	27.53	61.95
1905	16,800	58.87	8,492	29.75	61.46
1906	17,916	62.78	10,533	36.91	66.15
1907	16,397	57.46	10,782	37.78	62.69
1908	16,127	59.51	10,961	38.41	57.64
1909	16,034	55.73	8,665	30.12	59.50
1910	18,441	64.10	12,109	42.09	61.54
1911	20,223	51.80	12,541	32.12	60.30
1912	18,023	46.17	14,116	36.92	54.26
1913	19,686	50.43	9,667	24.76	58.82
1914	19,760	50.62	10,995	28.16	61.82
1915	16,845	43.15	11,998	30.73	59.75
1916	17,955	45.99	14,255	36.52	57.95
1917	17,282	44.26	13,285	34.03	46.24
1918	14,911	39.19	48,672	124.67	25.64
1919	10,584	27.11	16,715	42.81	17.89
1920	14,118	38.81	11,746	34.29	44.65
1921	11,421	31.40	10,702	29.42	44.84
1922	16,973	46.66	10,850	19.83	52.17
1923	16,616	45.68	8,857	24.35	51.32
1924	15,896	42.70	9,585	26.33	57.68
1925	15,520	43.66	12,441	34.20	53.13

NOTE.—For purposes of

## Vital Statistics.

the Annual Sanitary Reports.)

## Deaths from—

Cholera.	Per mille of popula- tion.	Small-pox.	Per mille of popula- tion.	Plague.*	Per mille of popula- tion.	Fever.	Per mille of popula- tion.	Year.
7	8	9	10	11	12	13	14	15
432	1'34	53	0'16	..	...	3,378	10'45	1891
1,037	3'16	3	00'09	...	...	3,324	9'84	1892
...	...	3	00'09	...	...	4,043	12'23	1893
741	2'26	7	0'02	...	..	6,670	20'32	1894
1,218	3'73	76	0'23	...	...	5,821	17'82	1895
345	1'06	476	1'46	...	...	4,971	15'24	1896
1,995	6'38	159	0'51	...	...	9,046	28'93	1897
..	...	61	1'19	...	...	3,043	9'66	1898
...	...	1	00'03	...	...	3,070	9'58	1899
3,608	11'84	87	0'29	...	...	6,118	20'39	1900
...	...	33	0'12	...	...	2,084	7'30	1901
...	...	51	0'17	...	...	2,299	8'06	1902
...	...	6	0'02	...	...	2,665	9'13	1903
...	...	7	0'02	35	0'12	2,238	7'84	1904
...	...	94	0'33	5	0'02	2,553	8'95	1905
166	'58	84	0'29	...	...	3,682	12'90	1906
...	...	18	0'06	2	0'01	3,992	13'99	1907
...	...	4	0'01	534	1'87	3,551	12'44	1908
46	'16	3	0'01	18	'06	2,973	10'33	1909
...	...	17	0'06	2	'01	4,398	15'29	1910
19	'05	28	0'07	104	'27	7,712	12'07	1911
999	2'33	83	0'21	380	'97	4,767	12'21	1912
1	...	154	'39	...	...	3,186	8'16	1913
38	'10	21	'05	4	'01	3,978	10'19	1914
1	...	7	'02	...	...	4,731	12'12	1915
431	1'10	8	'02	...	...	5,916	15'15	1910
5	0'1	8	'02	15	'03	5,851	14'99	1917
...	...	2	'01	93	'33	38,118	97'80	1918
2,609	6'65	65	'16	39	'09	6,013	15'37	1919
102	'28	4	'11	...	...	5,690	15'04	1920
...	...	...	...	...	...	5,371	14'70	1921
1	...	2	'01	89	'25	5,038	13'85	1922
37	'10	2	0'05	114	'3	3854	10'61	1923
...	...	24	0'05	72	'19	4,487	12'33	1924
10	'02	15	'04	242	'66	5,505	15'13	1925

each year have been deduced from Vital Statistics Returns.

## Betul District.

TABLE No. 7.—General

(This Table has been compiled from information

Year.	Total area.	Government forests.	Village area.	Unoccupied area.		
				Tree-forest, scrub-jungle and grass.	Groves, water, hill and rock, and roads and buildings.	Total.
1	2	3	4	5	6	7
	Acres.	Acres.	Acres.	Acres.	Acres.	Acres.
30 years' settlement	2,304,000	...	1,892,842	...	...	1,184,987
1891-92	2,447,360	755,096	1,692,264	31,990	605,954	637,944
1892-93	2,447,360	753,912	1,693,448	104,456	503,806	607,263
1893-94	2,410,307	753,912	1,656,395	411,778	191,529	603,307
At last settlement	2,307,657	689,280	1,618,377	408,760	183,973	592,733
1894-95	2,109,102	75,912	1,655,190	407,860	186,181	594,641
1895-96	2,104,425	753,912	1,650,513	410,335	186,516	594,851
1896-97	2,432,767	781,156	1,651,611	415,849	184,666	600,515
1897-98	2,432,767	778,976	1,653,791	426,952	183,143	610,095
1898-99	2,432,767	790,950	1,641,807	422,600	183,011	605,611
1899-1900	2,466,860	825,053	1,641,807	425,574	176,851	602,425
1900-01	2,466,914	824,925	1,641,989	440,777	177,051	617,838

## Statistics of Cultivation.

furnished by the Deputy Commissioner. (This Table)

Area out of cultivation (old fallow).	Occupied area.				Kharif Crops.		Year.
	Area in cultivation.			Total occupied area.	Cotton.	Juar.	
	New fallow.	Under crop.	Total.				
8	9	10	11	12	13	14	15
Acres.	Acres.	Acres.	Acres.	Acres.	Acres.	Acres.	
Nil	76,385	631,470	707,855	707,855	2,400	...	At 30 years' settlement.
193,831	161,391	699,098	860,489	1,054,320	2,016	38,171	1891-92
224,742	159,980	701,463	861,443	1,086,185	1,973	48,807	1892-93
68,371	334,999	649,718	984,717	1,053,088	5,552	85,153	1893-94
170,185	234,706	620,752	855,458	1,025,643	2,354	91,527	At last settlement.
87,168	308,399	664,682	973,081	1,060,549	3,445	78,911	1894-95
143,122	271,396	641,144	912,540	1,055,662	2,719	80,009	1895-96
161,341	312,584	577,971	889,555	1,051,096	3,716	91,006	1896-97
151,979	363,668	528,049	891,717	1,043,696	3,172	88,331	1897-98
141,928	325,750	568,518	894,268	1,036,196	2,198	82,273	1898-99
142,728	442,393	454,261	896,654	1,039,382	3,632	92,187	1899-1900
139,485	415,128	459,238	884,666	1,024,151	4,279	92,882	1900-01



## Betul District.

TABLE No. 7.—General

(This Table has been compiled from information

Year.	Total area.	Government forests.	Village area.	Unoccupied area.		
				Tree-forest, scrub-jungle and grass.	Groves, water, hill and rock, and roads and buildings.	Total.
1	2	3	4	5	6	7
	Acres.	Acres.	Acres.	Acres.	Acres.	Acres.
1901-02	2,467,759	761,276	1,705,883	484,068	186,183	670,251
1902-03	2,466,859	760,976	1,705,883	480,126	186,435	666,561
1903-04	2,466,467	761,058	1,705,409	448,803	191,686	640,489
1904-05	2,467,109	761,015	1,706,394	442,711	185,791	628,502
1905-06	2,467,238	760,932	1,705,306	430,130	185,498	615,628
1906-07	2,466,715	761,494	1,705,221	418,851	184,035	602,886
1907-08	255,170	846,356	1,705,474	409,993	183,183	593,176
1908-09	2,581,309	846,356	1,734,953	417,176	184,701	601,877
1909-10	2,496,440	760,841	1,735,599	411,851	184,828	596,679
1910-11	2,496,220	760,396	1,735,824	411,376	185,951	597,327
1911-12	2,495,673	760,262	1,736,411	410,434	185,712	596,146
1912-13	2,503,041	766,147	1,736,894	405,352	185,496	591,848

Statistics of Cultivation—*contd.*

furnished by the Deputy Commissioner.)

Area out of cultivation (old fallow).	Occupied area.			Total occupied area.	Kharif crop.		Year.
	Area in cultivation.				Cotton.	Juar.	
	New fallow.	Under crop.	Total.				
8	9	10	11	12	13	14	15
Acres.	Acres.	Acres.	Acres.	Acres.	Acres.	Acres.	
168,051	207,656	569,925	867,581	1,035,632	7,638	89,852	1901-02
181,957	255,499	601,866	857,365	1,030,332	12,499	100,395	1902-03
205,103	233,201	625,916	859,117	1,064,920	18,435	85,637	1903-04
210,080	214,563	653,249	867,812	1,077,892	27,763	83,565	1904-05
214,761	204,766	671,196	875,962	1,090,678	33,035	100,601	1905-06
219,152	209,376	675,807	883,183	1,103,335	23,477	100,709	1906-07
218,786	234,631	658,881	893,512	1,112,298	13,466	109,911	1907-08
221,347	204,064	707,665	911,729	1,133,076	10,930	140,295	1908-09
220,103	197,714	721,102	918,816	1,138,919	7,710	125,505	1909-10
214,855	215,389	708,223	923,612	1,138,467	13,719	110,212	1910-11
215,258	214,916	710,091	925,007	1,140,265	16,204	103,329	1911-12
236,819	201,594	703,633	908,227	1,145,046	21,249	103,529	1912-13

## Betul District.

TABLE No. 7.—General

(This Table has been compiled from information

Year.	Total area.	Government forests.	Village area.	Unoccupied area		
				Tree-forest, scrub-jungle and grass.	Groves, water, hill and rock, and roads and buildings.	Total.
1	2	3	4	5	6	7
	Acres.	Acres.	Acres.	Acres.	Acres.	Acres.
1913-14	2,496,204	759,331	1,736,813	400,992	189,980	590,972
1914-15	2,496,210	759,331	1,736,879	399,911	189,660	589,571
1915-16	2,496,202	759,183	1,737,919	396,905	190,485	587,390
1916-17	2,495,570	758,916	1,736,654	396,203	188,080	584,283
1917-18	2,495,341	759,063	1,736,278	403,233	181,768	585,001
1918-19	2,99,828	758,880	1,740,948	424,238	162,365	586,603
1919-20	2,502,396	761,079	1,741,317	427,300	160,859	588,159
1920-21	2,502,412	761,067	1,741,345	431,412	158,435	589,847
1921-22	2,502,319	761,067	1,741,252	429,491	160,220	589,720
1922-23	2,501,988	758,927	1,743,061	429,866	159,604	589,470
1923-24	2,501,996	758,927	1,743,069	425,902	159,949	585,851
1924-25	2,501,996	758,927	1,743,069	423,687	159,535	583,223
1925-26	2,501,996	758,927	1,743,069	419,351	159,340	578,691

TABLE No. 7—General  
**Statistics of Cultivation—contd.**

(This table has been compiled from information furnished by the Deputy Commissioner.)

Area out of cultivation (old fallow).	Occupied area.				Kharif crops.		Year.
	Area in cultivation.			Total occupied area.	Cotton.	Juar.	
	New fallow.	Under crop.	Total.				
8	9	10	11	12	13	14	15
Acres.	Acres.	Acres.	Acres.	Acres.	Acres.	Acres.	
249,567	194,543	701,731	896,274	1,145,841	28,554	104,073	1913-14
255,542	169,048	722,718	891,766	1,147,308	25,211	130,578	1914-15
247,519	154,606	747,504	902,110	1,149,629	9,645	149,699	1915-16
231,199	160,629	760,543	921,172	1,152,371	14,432	145,800	1916-17
230,545	173,469	747,263	920,732	1,151,277	12,684	143,739	1917-18
175,511	317,079	661,755	978,834	1,154,345	20,155	156,520	1918-19
195,745	255,034	672,397	957,413	1,153,158	41,889	153,752	1919-20
237,445	259,431	654,622	914,053	1,151,498	25,757	121,130	1920-21
233,462	209,546	678,524	888,070	1,151,532	13,363	159,369	1921-22
287,475	173,921	692,195	866,116	1,153,591	20,551	148,614	1922-23
301,219	172,640	683,359	855,999	1,157,218	23,157	117,382	1923-24
298,137	149,794	711,615	861,409	1,159,846	36,446	124,615	1924-25
297,957	158,279	708,142	866,421	1,164,378	47,651	116,929	1925-26

## Betul District.

TABLE No. 7.—General

(This Table has been compiled from information

Year.	Kharif crops.				Rabi crops.		
	Kodon and kutki.	Sugar-cane.	Til (a).	Total kharif crops.	Wheat.	Gram.	Total rabi crops.
I	16	17	18	19	20	21	22
	Acres.	Acres.	Acres.	Acres.	Acres.	Acres.	Acres.
At 30 years' settlement	...	7,000	...	...	...	...	...
1891-92	148,140	9,272	17,928	407,286	153,235	57,682	300,611
1892-93	202,022	10,446	19,916	438,578	159,667	52,548	275,283
1893-94	123,950	7,949	21,498	388,242	176,198	35,676	272,802
At last settlement	134,606	6,115	24,385	...	153,624	28,894	...
1894-95	132,757	6,712	24,091	409,608	172,149	39,210	268,222
1895-96	162,677	6,552	23,796	407,350	163,312	30,879	244,107
1896-97	133,548	6,094	28,034	410,094	123,158	17,198	176,154
1897-98	106,295	5,193	36,756	282,674	119,142	14,678	164,338
1898-99	126,508	4,806	24,996	389,586	131,960	25,287	94,397
1899-1900	127,110	4,656	30,440	369,577	56,280	11,394	86,690
1900-01	118,421	1,783	36,034	367,865	78,121	20,508	121,529

(a) This crop is grown in both the Autumn and Spring

Statistics of Cultivation—*contd.*)

furnished by the Deputy Commissioner.)

Area double-cropped.	Irrigation.			No. of ploughs.	No. of plough cattle.	Year.
	Irrigated area.	No. of irrigation tanks.	No. of irrigation wells.			
23	24	25	26	27	28	29
Acres.	Acres.					
...	14,594	...	...	32,655	...	At 30 years' settlement.
8,799	9,935	...	5,391	43,967	95,714	1891-92
12,398	12,492	...	5,404	44,735	95,970	1892-93
12,026	7,847	...	5,809	38,532	108,131	1893-94
11,251	10,470	49	4,882	34,251	84,119	At last settlement.
15,148	7,545	...	5,508	26,985	76,994	1894-95
10,313	8,127	...	5,027	35,217	99,653	1895-96
8,277	12,056	...	4,937	67,543	97,677	1896-97
18,963	8,399	...	5,363	60,137	87,188	1897-98
15,375	9,879	...	5,333	63,349	88,233	1898-99
2,006	6,777	...	5,351	58,388	113,881	1899-1900
20,156	8,457	...	5,347	28,860	77,996	1900-01

Seasons. The Autumn crop is the principal one.



## Betul District.

TABLE No. 7.—General

(This Table has been compiled from information

Year.	Kharif crops,				Rabi crops.		
	Kodon and kutki.	Sugarcane.	Til.	Total Kharif crops.	Wheat.	Gram.	Total rabi crops.
r	16	17	18	19	20	21	22
	Acres.	Acres.	Acres.	Acres.	Acres.	Acres.	Acres.
1901-02	134,151	3,208	28,143	41,436	112,218	35,923	176,579
1902-03	136,709	4,240	40,944	44,250	102,382	43,643	182,214
1903-04	127,375	3,172	43,679	43,929	149,322	38,792	216,313
1904-05	145,061	2,789	48,881	457,340	153,141	33,151	215,626
1905-06	137,749	2,315	32,571	462,947	159,157	32,966	220,940
1906-07	132,923	3,086	28,760	484,548	109,283	35,800	236,007
1907-08	141,924	3,612	40,776	451,434	131,090	23,743	184,229
1908-09	138,505	3,611	49,194	531,839	124,300	34,988	196,082
1909-10	160,897	3,620	45,736	44,594	143,750	40,417	217,204
1910-11	145,340	3,834	44,594	479,872	166,768	51,498	218,266
1911-12	140,708	4,016	46,334	476,551	178,394	43,137	258,922
1912-13	120,830	3,973	41,171	458,993	184,815	43,059	266,764
1913-14	130,589	3,779	33,942	456,882	180,783	42,907	263,837
1914-15	136,487	3,372	38,370	500,088	170,183	45,889	251,625
1915-16	158,835	3,363	38,565	5,8216	167,078	37,533	237,552
1916-17	164,220	3,400	36,793	536,639	175,809	37,985	251,255
1917-18	164,233	3,434	35,496	522,612	176,225	37,859	247,075
1918-19	141,409	4,959	17,343	405,824	112,010	32,046	183,530
1919-20	120,272	2,758	27,989	517,914	117,828	45,370	194,830
1920-21	125,740	2,689	31,746	463,610	131,352	50,774	214,209
1921-22	138,872	3,356	36,186	627,274	123,277	38,396	192,389
1922-23	139,040	3,437	36,911	509,931	143,564	46,175	219,271
1923-24	134,775	3,523	29,825	461,989	159,916	54,895	247,273
1924-25	146,926	3,613	27,728	505,439	161,685	51,777	246,944
1925-26	140,242	3,392	22,993	495,785	162,370	52,891	247,012



# Statistics of Cultivation—concl'd.

furnished by the Deputy Commissioner.)

Area double cropped.	Irrigation.			No. of ploughs.	No. of plough cattle.	Year.
	Irrigated area.	No. of irrigation tanks.	No. of irrigation wells.			
23	24	25	26	27	28	29
Acres.	Acres.					
18,090	11,683	...	5,341	31,586	85,249	1901-02
22,853	6,442	...	4,883	31,553	92,383	1902-03
21,325	10,784	...	5,334	35,822	94,623	1903-04
19,717	8,014	...	4,896	37,435	102,548	1904-05
13,691	12,762	3	5,532	38,898	105,816	1905-06
13,634	14,627	3	5,638	42,522	115,704	1906-07
9,896	20,609	6	6,879	43,751	121,759	1907-08
19,796	23,752	6	9,143	44,410	119,361	1908-09
26,278	21,778	6	9,782	43,546	119,038	1909-10
23,539	9,634	5	9,583	46,880	121,200	1910-11
25,302	9,140	4	6,578	47,619	122,756	1911-12
22,124	9,621	11	6,651	49,501	126,147	1912-13
18,988	18,800	16	7,376	51,867	126,887	1913-14
28,995	17,773	21	10,331	52,041	129,661	1914-15
28,364	16,724	21	10,866	51,663	130,694	1915-16
27,351	17,134	14	11,078	51,479	131,056	1916-17
22,824	17,018	14	11,078	51,230	130,446	1917-18
17,599	12,390	25	7,416	49,251	117,698	1918-19
49,365	11,734	17	11,154	50,677	112,753	1919-20
23,193	24,316	24	13,978	50,258	114,935	1920-21
41,139	25,027	26	12,844	50,604	115,073	1921-22
37,007	11,365	20	13,452	52,438	124,173	1922-23
25,903	22,229	28	13,233	51,640	123,757	1923-24
40,768	15,646	29	10,681	53,051	126,500	1924-25
34,655	10,933	31	13,753	55,146	130,053	1925-26

## Betul District.

TABLE No. 8.—Outturn of Crops (Outturn in American

(This Table has been compiled from Statement V

Year.	Kharif.					
	Juar.	Tur.	Rice, broad- cast.	Rice, trans- planted.	Cotton.	Til.
1	2	3	4	5	6	7
1891-92 ...	53	45	60	...	75	75
1892-93 ...	83	90	75	...	75	75
1893-94 ...	75	75	60	...	90	90
1894-95 ...	105	105	90	...	45	75
1895-96 ...	56	38	68	...	90	56
1896-97 ...	45	30	45	...	75	60
1897-98 ...	120	60	135	113	100	100
1898-99 ...	75	90	120	...	105	75
1899-1900 ...	8	15	8	...	45	60
1900-01 ...	100	60	90	...	120	75

Notation taking 100 to represent a Normal Crop).  
 of the Season and Crop Reports.)

Kodan and kutki.	Sugarcane.	Rabi.				Percentage of actual outturn of all crops taken together on Normal Outturn of Normal area (Normal Outturn = 13'3 annas).	Year.
		Wheat.	Gram.	Masur.	Linseed.		
8	9	10	11	12	13	14	15
53	83	60	45	68	60	...	1891-92
90	83	60	45	38	45	74	1892-93
60	90	120	90	90	90	82	1893-94
75	90	83	75	60	45	85	1894-95
56	75	60	60	64	60	56	1895-96
30	60	75	75	45	45	42	1896-97
120	75	60	60	53	90	83	1897-98
100	60	75	90	75	90	73	1898-99
25	60	40	50	15	15	18	1899-1900
90	75	90	75	90	60	66	1900-01

## Betul District.

TABLE No. 8--Outturn of Crops (Outturn in American  
(This Table has been compiled from Statement V

Year.	Kharif					
	Juar.	Tur.	Rice, broad- cast.	Rice, trans- planted.	Cotton.	Til.
1	2	3	4	5	6	7
1901-02	30	75	60	...	100	75
1902-03	135	50	90	...	120	120
1903-04	105	110	110	...	120	90
1904-05	100	60	30	...	120	100
1905-06	90	100	100	...	100	90
1906-07	60	100	100	...	60	100
1907-08	45	45	45	...	47	45
1908-09	90	100	100	Nil	75	75
1909-10	120	110	90	...	120	100
1910-11	105	75	100	...	90	100
1911-12	100	100	100	...	100	100
1912-13	100	100	100	...	90	90
1913-14	60	60	75	...	75	75

Notation taking 100 to represent a Normal Crop) — contd.  
of the Season and Crop Report.)

Kodon and kutki.	Sugar- cane.	Rabi.				Percentage of actual outturn of all crops taken together on Nor- mal Outturn of Normal Area (Normal Outturn = 13'3 annas.)	Year.
		Wheat.	Gram.	Masur.	Linseed.		
8	9	10	11	12	13	14	15
30	120	50	75	90	50	40	1901-02
120	75	120	100	100	100	109	1902-03
110	100	105	110	110	100	103	1903-04
75	100	130	75	100	120	102	1904-05
100	100	105	100	82	110	105	1905-06
100	110	100	75	82	90	92	1906-07
22	90	60	75	75	45	44	1907-08
60	100	100	90	75	90	88	1908-09
110	110	120	120	100	100	125	1909-10
110	90	100	90	100	105	114	1910-11
105	100	100	100	90	100	115	1911-12
90	100	120	120	120	120	119	1912-13
50	100	90	90	90	90	74	1913-14

## Betul District.

TABLE No. 8.—Outturn of Crops (Outturn in American  
(This Table has been compiled from Statement V

Year.	Kharif.					
	Juar.	Tur.	Rice-broad- cast.	Rice, trans- planted.	Cotton.	Til.
1	2	3	4	5	6	7
1914-15	120	110	120	...	100	100
1915-16	120	100	120	120	105	120
1916-17	90	90	110	110	90	82
1917-18	65	65	116	116	90	60
1918-19	35	45	45	45	55	60
1919-20	100	100	113	...	100	107
1920-21	40	30	45	...	55	50
1921-22	112	112	112	112	100	105
1922-23	105	112	100	100	105	100
1923-24	45	45	105	105	75	75
1924-25	105	105	112½	...	100	100
1925-26	75	75	82½	...	75	45

Notation taking 100 to represent a Normal Crop).—*concl'd.*  
of the Season and Crop Report).

Kodon and kukti.	Sugar- cane.	Rabi.				Percentage of actual outturn of all crops Normal outturn = 13'3 annas.	Year.
		Wheat.	Gram.	Masur.	Linseed.		
8	9	10	11	12	13	14	15
115	120	90	95	75	90	111	1914-15
120	100	105	75	100	110	122	1915-16
90	110	120	100	100	120	111	1916-17
65	120	65	75	75	100	75	1917-18
35	65	75	75	60	65	45	1918-19
110	117	115	90	90	105	108	1919-20
30	83	45	50	50	45	43	1920-21
105	100	105	100	100	90	105	1921-22
105	105	120	120	100	120	113	1922-23
60	120	100	100	100	100	75	1923-24
120	120	105	100	100	60	104	1924-25
67½	112½	75	90	105	90	79	1925-26



## Betul District.

TABLE No. 9.—Loans (Principal and Interest).

(This Table has been compiled from information furnished by the Deputy Commissioner).

Year.	Land Improvement Loans.						Year.
	Total amount of advances outstanding at the commencement of the year (Principal).	Advances.	Demand for collection (current and arrears). (Principal and Interest).	Total collections.		Remissions.	
				Principal.	Interest.		
1	2	3	4	5	6	7	8
	Rs.	Rs.	Rs.	Rs.	Rs.	Rs.	
1891-92 ...	3,512	1,085	710	559	151	...	1891-92
1892-93 ...	4,038	1,480	1,114	835	283	...	1892-93
1893-94 ...	4,683	1,300	2,040	1,721	328	...	1893-94
1894-95 ...	4,263	410	1,345	1,071	274	...	1894-95
1895-96 ...	3,601	100	1,278	1,056	222	...	1895-96
1896-97 ...	2,645	1,762	1,059	890	169	...	1896-97
1897-98 ...	4,747 (a)	16,624	1,749	1,357	125	...	1897-98
1898-99 ...	20,013 (a)	373	6,054	5,006	165	3,441	1898-99
1899-1900	11,939 (a)	2,480	6,480 (b)	2,403	54	...	1899-1900
1900-01 ...	11,944 (a)	400	12,060 (c)	155	...	...	1900-01

(a) Includes Rs. 1,230, 17,207, 9,862 and 7,882, respectively, on account of Famine Loans, and the last excludes Rs. 72 shown in previous year's accounts.

(b) Includes Rs. 5,821 on account of Famine Loans.

(c) Includes Rs. 8,867 on account of Famine Loans.

## Betul District.

Betul District.

TABLE No. 9.—Loans (Principal and Interest)—*contd.*

(This Table has been compiled from information furnished by the Deputy Commissioner.)

Year.	Land Improvement Loans.						Year.
	Total amount of advances outstanding at the commencement of the year (Principal).	Advances.	Demand for collection (current and arrears), (Principal and Interest).	Total collections.		Remissions.	
				Principal.	Interest.		
1	2	3	4	5	6	7	8
	Rs.	Rs.	Rs.	Rs.	Rs.	Rs.	
1901-02 ...	4,427(d)	799	4,399	582	60	...	1901-02
1902-03 ...	12,155(a)	...	(b)12,778	(c)8,151	624	...	1902-03
1903-04 ...	4,047(a)	2,655	(b)3,015	(c)1,597	107	924	1903-04
1904-05 ...	4,181(a)	765	(b)1,450	(c)1,216	117	117(e)	1904-05
1905-06 ...	3,695(f)	1,865	(f)1,236	(f)965	(f)271	...	1905-06
1906-07 ...	4,594(g)	2,740	(g)1,485	(g)1,207	278	...	1906-07
1907-08 ...	6,127	1,16,288	1,485	1,215	270	...	1907-08
1908-09 ...	1,21,200	10,664	16,372	12,613	3,759	...	1908-09
1909-10 ...	1,19,251	5,795	49,559	37,405	12,154	...	1909-10
1910-11 ...	89,641	6,550	58,982	50,139	6,440	...	1910-11
1911-12 ...	44,056	2,469	18,853	15,484	2,720	...	1911-12
1912-13 ...	25,040	1,900	7,993	9,485	1,747	...	1912-13
1913-14 ...	20,438	1,470	5,518	(h)6,360	1,287	...	1913-14
1914-15 ...	15,548	1,005	4,964	4,972	993	...	1914-15

(a) Includes Rs. 7,471, 1,529 and 546 respectively, on account of Famine loans.

(b) " Rs. 7,410, 1,055 and 274 do. do. do.

(c) " Rs. 5,708, 507 and 239 do. do. do.

(d) Excludes Rs. 7,762 on account of Famine loans shown in previous year's accounts.

(e) Includes Rs. 82 on account of remission of Interest.

(f) " Rs. 272 and 188, respectively, on account of Famine loans.

(g) " Rs. 84 on account of Famine loans.

(h) " Rs. 1,617 on account of excess collections.

## Betul District.

Betul District.

TABLE No. 9.—Loans (Principal and Interest)—*contd.*

(This Table has been compiled from information furnished by the Deputy Commissioner.)

Year.	Land Improvements Loans.						Year.
	Total amount of advances outstanding at the commencement of the year (Principal).	Advances.	Demand for collection (current and arrears); (Principal and Interest).	Total collections.		Remissions.	
				Principal.	Interest.		
1	2	3	4	5	6	7	8
	Rs.	Rs.	Rs.	Rs.	Rs.	Rs.	
1915-16 ...	11,581	640	4,556	(d)4,581	740	...	1915-16
1916-17 ...	7,640	442	4,179	3,708	471	...	1916-17
1917-18 ...	4,374	6,077	2,605	2,036	261	...	1917-18
1918-19 ...	8,415	38,935	6,033	3,075	260	...	1918-19
1919-20 ...	44,265	3,985	21,502	16,894	3,090	...	1919-20
1920-21 ...	31,360	36,680	17,816	2,301	402	...	1920-21
1921-22 ...	65,559	315	40,765	20,587	3,617	...	1921-22
1922-23 ...	41,031	1,660	41,260	23,558	3,032	...	1922-23
1923-24 ...	17,745	1,273	14,346	+ 1,388(a) 13,319(b)	1,555	...	1923-24
1924-25 ...	5,699	3,229	3,522 Prin. + 390 Int.	3,539(c)	85	...	1924-25
1925-26 ...	5,389	3,005	2,286 Prin. + 412 Int.	2,136(d)	380	...	1925-26

(i) Includes Rs. 25 advance collections.

(a) Advance collections.

(b) Includes advance of Rs. 149.

(c) Do. do. Rs. 71.

(d) Includes Rs. 155 advance collections.

## Betul District.

Betul District.

TABLE No. 9.—Loans (Principal and Interest)—*contd.*

(This Table has been compiled from information furnished by the Deputy Commissioner.)

Year.	Agricultural Loans.						Year.
	Total amount of advances outstanding at the commencement of the year (Principal).	Advances.	Demand for collection (current and arrears), (Principal and Interest).	Total collections.		Remissions.	
				Principal.	Interest.		
1	2	3	4	5	6	7	8
	Rs.	Rs.	Rs.	Rs.	Rs.	Rs.	
1891-92 ...	4,552	2,290	2,036	1,848	255	...	1891-92
1892-93 ...	4,984	4,300	2,587	2,304	312	...	1892-93
1893-94 ...	6,979	4,000	4,231	3,798	483	...	1893-94
1894-95 ...	7,181	1,195	3,854	3,381	491	...	1894-95
1895-96 ...	4,996	1,975	3,183	2,904	311	...	1895-96
1896-97 ...	4,067	7,949	2,548	2,326	227	...	1896-97
1897-98 ..	9,690	34,974	4,557	2,310	328	...	1897-98
1898-99 ...	42,353	44,448	44,788	22,214	2,157	...	1898-99
1899-1900	64,587	5,883	59,333	9,665	992	...	1899-1900
1900-01 ...	1,20,877(e)	59,825	1,13,057	6,570	229	...	1900-01
1901-02 ...	1,74,133	47,934	1,60,519	39,480	2,112	244	1901-02

(e) Includes Rs. 60,072 not shown in previous year's accounts.

## Betul District.

Betul District

TABLE No. 9.—Loans (Principal and Interest)—contd.

(This Table has been compiled from information furnished by the Deputy Commissioner.)

Year.	Agriculture Loans.						Year.
	Total amount of advances outstanding at the commencement of the year (Principal).	Advances.	Demand for collection (current and arrears) (Principal and Interest).	Total collections.		Remissions.	
				Principal.	Interest.		
1	2	3	4	5	6	7	8
	Rs.	Rs.	Rs.	Rs.	Rs.	Rs.	
1902-03 ...	194,458	2,985	1,90,558	1,21,537	7,166	55	1902-03
1903-04 ...	64,714	3,850	58,036	25,318	170	3,820	1903-04
1904-05 ...	11,391	10,553	8,170	7,464	220	360	1904-05
1905-06 ...	14,120	10,597	10,972	10,206	656	23	1905-06
1906-07 ...	14,488	22,164	10,195	9,344	851	...	1906-07
1907-08 ...	27,308	1,46,509	1,802	1,568	234	...	1907-08
1908-09 ...	1,75,634	80,245	1,55,490	1,43,127	12,363	...	1908-09
1909-10 ...	1,12,759	19,618	95,485	85,562	9,923	...	1909-10
1910-11 ...	46,815	12,245	51,222	39,157	3,053	...	1910-11
1911-12 ...	44,052	2,469	18,583	15,484	2,720	90(a)	1911-12
1912-13 ...	15,958	9,229	10,409	10,869	992	...	1912-13
1913-14 ..	14,348	2,059	7,809	7,312	789	...	1913-14
1914-15 ..	28,095	8,202	16,579	17,904	1,597	...	1914-15
1915-16 ...	18,393	7,419	12,771	(c)13,368	984	...	1915-16
1916-17 ...	12,744	6,440	7,648	(d)7,799	716	...	1916-17

(a) Written off.

(b) Includes excess collection of Rs. 370.

(c) Includes Rs. 143 advance collections.

(d) Includes Rs. 915 do.

## Betul District.

TABLE No. 9.—Loans (Principal and Interest)—*concl'd.*

(This Table has been compiled from information furnished by the Deputy Commissioner.)

Year.	Agriculture Loans.						Year.
	Total amount of advances outstanding at the commencement of the year (Principal).	Advances.	Demand for collection (current and arrears) (Principal and Interest).	Total collections.		Remissions.	
				Principal.	Interest.		
1	2	3	4	5	6	7	8
	Rs.	Rs.	Rs.	Rs.	Rs.	Rs.	
1917-18 ...	11,358	42,181	14,984	(e)6,233	561	...	1917-18
1918-19 ...	47,333	84,069	52,516	12,734	903	...	1918-19
1919-20 ...	1,18,668	40,887	1,31,190	1,07,451	8,126	...	1919-20
1920-21 ...	52,109	45,611	51,577	6,995	518	...	1920-21
1921-22 ...	90,226	30,179	1,11,137	67,933	4,866	...	1921-22
1922-23 ...	50,439	14,173	60,257	43,696 + 493(a)	5,209	57 Prin. 4 Int.	1922-23
1923-24 ...	20,096	25,580	24,948	2,282(b)	2,213	139	1923-24
1924-25 ...	23,475	16,430	15,674 Prin. + 1,856 Int.	16,917(c)	1,824	...	1924-25
1925-26 ...	22,988	12,840	14,502 Prin. + 1,816 Int.	14,151(d)	1,775	...	1925-26

(e) Includes Rs. 370 advance collections.

(a) Advance collections.

(b) Includes advance collections of Rs. 149.

(c) Do. do. Rs. 1,528.

(d) Do. do. Rs. 526.

## Betul District.

TABLE No. 10.—Forest

(This Table has been compiled from Annual Forms Nos. 46 and 65)

Year.	Area of Government Forests.				Timber and duce remove forests by age	
	A Class.	B Class.	Unclassed.	Total.	Receipts.	
	1	2	3	4	5	
		Sq. miles.	Sq. miles.	Sq. miles.	Sq. miles.	Rs.
1891-92	...	518	621	...	1,139	1,104
			B. I.	B. II.		
1892-93	...	650	621	...	1,271	4
1893-94	...	555	195	522	1,272	—5
1894-95	...	555	195	522	1,272	—13
1895-96	...	555	195	521	1,271	...
1896-97	...	555	195	522	1,272	...
1897-98	...	555	195	522	1,272	1,234
1898-99	...	555	195	521	1,271	259
1899-1900	...	769	143	414	1,326	15,355
1900-01	...	1,181	143	...	1,324	86
1901-02	...	1,181	143	...	1,324	550
1902-03	...	1,181	143	...	1,324	550
1903-04	...	1,181	143	...	1,324	...
1904-05	...	1,181	134	...	1,315	65
1905-06	...	1,180	135	...	1,315	36
1906-07	...	1,190	133	...	1,323	552
1907-08	...	1,190	133	...	1,323	200
1908-09	...	1,190	133	...	1,323	3,179
1909-10	...	1,189	132	...	1,321	3,470
1910-11	...	1,187	121	...	1,308	1,048
1911-12	...	1,188	120	...	1,308	2,642
1912-13	...	1,192	8	...	1,200	2,741
1913-14	...	1,180	9	...	1,189	4,442
1914-15	...	1,180	9	...	1,180	2,142
1915-16	...	1,180	9	...	1,189	3,679
1916-17	...	1,180	9	...	1,180	6,054
1917-18	...	1,180	9	...	1,189	3,447
1918-19	...	1,180	9	...	1,189	6,380
1919-20	...	1,181	8	...	1,189	10,515
1920-21	...	1,181	8	...	1,189	2,178
1921-22	...	950	8	...	958	1,740
1922-23	...	949	8	...	957	305
1923-24	...	949	8	...	957	4,676
1924-25	...	949	8	...	957	5,625
1925-26	...	949	8	...	957	12,708



## Area and Revenue.

and 51 and 71 appended to the Annual Forest Reports.)

other pro- d from the Government ncy.	Other Revenues.		Formation, protection and im- provement of forests.	Total.		Year.
	Charges.	Receipts.		Charges.	Receipts.	
7	8	9	10	11	12	13
Rs.	Rs.	Rs.	Rs.	Rs.	Rs.	
544	81,476	19,135	17,153	82,580	36,832	1891-92
753	99,993	24,866	25,491	99,997	51,020	1892-93
551	67,835	21,460	22,946	67,830	44,957	1893-94
591	69,575	18,614	22,714	69,562	41,910	1894-95
595	64,618	17,173	20,422	64,618	38,190	1895-96
601	51,036	17,986	22,985	51,036	41,572	1896-97
1130	60,570	15,972	28,017	61,804	45,119	1897-98
831	72,841	15,446	24,884	73,100	41,161	1898-99
17,526	58,600	15,061	23,827	73,955	56,414	1899-1900
12,938	79,296	12,782	17,107	79,382	42,827	1900-01
15,421	80,238	12,439	13,099	80,788	40,959	1901-02
15,179	69,562	11,146	13,215	70,112	39,540	1902-03
16,039	71,612	11,421	13,746	71,612	41,206	1903-04
15,912	79,529	13,107	14,112	79,594	43,131	1904-05
15,433	88,509	13,410	13,668	88,545	42,511	1905-06
46	1,10,087	24,906	27,559	1,10,639	52,511	1906-07
3,974	72,087	36,315	41,237	72,287	81,526	1907-08
9,197	90,046	30,803	34,261	93,225	74,261	1908-09
75	1,00,636	29,382	33,465	1,04,106	63,604	1909-10
23,601	1,14,208	19,556	24,500	1,15,256	67,657	1910-11
26,072	1,32,781	23,728	20,943	1,35,443	76,743	1911-12
28,419	1,47,637	24,838	25,815	1,50,378	79,072	1912-13
6,820	1,65,533	24,123	46,638	1,69,975	77,581	1913-14
25,279	1,58,469	24,537	24,221	1,60,611	74,097	1914-15
28,177	1,53,258	24,557	23,576	1,56,937	76,310	1915-16
34,355	1,87,902	31,080	26,283	1,93,956	91,718	1916-17
19,235	1,98,323	34,387	36,452	4,01,775	90,074	1917-18
21,356	2,03,918	31,400	35,597	2,10,298	88,353	1918-19
22,665	2,66,840	35,506	45,299	2,77,325	1,03,470	1919-20
23,850	2,35,096	39,282	30,516	2,37,274	93,648	1920-21
28,150	2,09,008	39,937	37,214	2,10,748	1,05,301	1921-22
28,292	2,19,519	42,214	39,089	2,19,824	1,09,595	1922-23
30,670	2,23,011	44,156	44,999	2,27,687	1,19,825	1923-24
33,835	2,14,612	46,405	50,064	2,20,237	1,30,304	1924-25
31,360	1,71,026	47,954	53,460	1,83,734	1,32,774	1925-26

# Betul District.

TABLE No. II.—Retail Prices (in seers per rupee) of the  
at the Head

(This Table has been compiled from the Supple

Year.	Head quarters					
	Staple Food-					
	January.	February.	March.	April.	May.	June.
I	2	3	4	5	6	7
1891	19'2	19'2	19'2	19'2	19'2	19'2
1892	18'0	18'8	17'3	16'6	16'0	16'0
1893	17'3	17'3	17'3	17'3	22'7	22'7
1894	27'4	27'4	27'4	27'2	27'0	27'0
1895	21'3	19'4	20'6	20'6	20'6	20'6
1896	17'0	17'0	17'0	17'0	17'0	15'5
1897	10'5	9'8	9'1	8'5	8'5	6'7
1898	18'9	20'1	20'5	19'2	18'0	18'0
1899	24'0	24'0	24'0	23'5	24'0	21'8
1900	...	...	...	...	...	...
1901	21'9	20'1	16'7	18'2	16'3	17'2
1902	16'3	18'9	17'6	15'7	15'1	15'1
1903	30'5	30'5	30'5	30'5	30'5	30'5
1904	27'9	25'4	25'4	25'4	25'4	23'6
1905	20'9	18'9	18'9	18'3	18'8	18'9
1906	15'3	15'3	16'0	16'0	16'9	16'0
1907	17'8	16'0	17'8	16'0	16'0	15'9

Betul District

District Staple Food-grain for each month of the decade  
quarters Town.

ment to the *Central Provinces Gazette*.)

Town—Badnur.							Year.
grain—Juar.							
July.	August.	Septem-ber.	October.	Novem-ber.	December.	Average for the year.	
8	9	10	11	12	13	14	15
19'2	19'2	18'0	18'0	17'3	17'3	18'7	1891
16'0	14'9	14'9	16'0	17'3	17'3	16'6	1892
22'7	24'0	24'0	24'0	25'7	27'4	21'9	1893
27'0	27'0	27'0	27'0	27'0	27'0	27'1	1894
16'0	16'0	17'0	17'0	17'0	17'0	18'6	1895
14'4	14'4	14'4	14'4	10'3	10'3	14'9	1896
7'5	8'0	8'0	...	15'2	16'0	9'8	1897
18'0	18'0	18'0	21'3	22'8	24'0	19'8	1898
18'8	17'3	17'1	...	...	10'6	19'9	1899
...	...	...	...	12'6	21'7	...	1900
15'1	15'1	16'9	17'0	17'0	17'6	17'3	1901
15'1	15'1	16'7	20'1	25'2	30'5	18'5	1902
31'8	35'7	32'8	38'0	38'0	30'5	32'5	1903
21'8	20'0	18'2	18'2	18'2	21'8	22'8	1904
17'8	17'8	18'9	17'8	17'8	17'8	18'6	1905
17'7	16'0	16'0	16'0	16'9	17'7	16'3	1906
13'0	14'2	13'0	10'4	9'7	10'0	14'2	1907

## Betul District.

TABLE No. II.—Retail Prices (in seers per rupee) of the  
at the Head

(This Table has been compiled from the Supple

Year.	Head quarters					
	Staple Food					
	January.	February.	March.	April.	May.	June.
1	2	3	4	5	6	7
1908	9'5	9'5	9'8	9'2	9'2	8'9
1909	12'0	12'2	12'4	12'7	12'2	11'1
1910	16'4	17'3	18'4	17'3	17'3	19'5
1911	19'6	19'6	19'6	19'6	19'02	16'
1912	17'15	15'92	19'60	15'92	15'92	15'92
1913	12'86	13'48	12'86	12'86	...	...
1914	...	...	11'05	11'05	11'05	11'05
1915	12'62	12'62	12'62	12'93	12'93	12'62
1916	17'24	16'00	16'62	18'47	19'70	...
1917	14'16	13'54	15'05	15'05	15'05	15'17
1918	8'60	8'60	8'06	8'06	7'52	...
1919	5'64	5'51	5'61	5'73	4'87	..
1920	6'87	7'65	8'60	7'40	7'64	7'65
1921	6'88	6'88	6'03	6'03	...	...
1922	9'67	9'67	8'60	8'60	8'50	8'60
1923	12'98	12'36	11'84	13'30	13'62	...
1924	11'33	11'33	11'33	...	10'45	...
1925	8'90	7'02	8'45	8'30	8'30	9'70
1926	10'30	9'65	10'30	10'30	10'30	9'00
						9'22

District Staple Food-grain for each month of the decade  
quarters Town--concl'd.

ment to the *Central Provinces Gazette.*)

Town--Badnur.

grain--Juar.

							Year.
July.	August.	Septem-ber.	October.	Novem-ber.	Decem-ber.	Average for the year.	
8	9	10	11	12	13	14	15
8'4	9'2	9'4	9'7	10'4	12'0	9'6	1908
11'5	12'5	15'6	16'4	16'4	15'6	13'4	1909
18'4	19'5	19'6	20'8	20'8	20'8	18'8	1910
17'1	15'3	14'08	15'92	15'92	17'15	17'3	1911
15'92	15'92	15'92	15'92	15'92	14'08	15'34	1912
...	...	...	...	...	...	...	1913
11'99	11'70	...	11'70	13'85	14'77	12'23	1914
12'31	12'31	12'62	13'55	15'08	17'24	13'30	1915
19'70	19'70	19'70	20'93	17'85	16'00	18'47	1916
13'97	13'97	12'63	12'36	11'56	9'14	13'30	1917
"	...	6'45	..	6'58	7'79	5'14	1918
...	...	...	...	...	7'25	5'77	1919
7'65	7'65	7'20	6'30	6'88	6'90	6'72	1920
"	...	...	...	6'25	8'09	6'69	1921
8'60	8'50	8'60	11'29	11'47	11'47	9'46	1922
11'33	11'33	11'33	11'33	11'33	11'33	12'01	1923
9'70	9'70	9'50	9'50	9'50	9'50	9'30	1924
9'00	9'00	10'30	10'30	9'00	9'65	8'94	1925
8'60	8'60	9'60	9'85	9'70	8'60	9'58	1926

## Betul District.

TABLE No. 12.—Wages (monthly)

(This Table has been compiled from information

Year.	Headquarters				
	Retail Prices (seers per rupee).				
	Wheat.	Common rice.	Cotton.	Kodon and kutki.	Linseed.
1	2	3	4	5	6
1891 ... ..	13'8	9'6	...	12'5	...
1892 ... ..	12'7	9'1	...	12'1	...
1893 ... ..	18'1	9'6	...	15'3	...
1894 ... ..	18'2	10'1	...	16'0	...
1895 ... ..	14'7	9'3	...	13'8	...
1896 ... ..	12'5	9'7	1'7	12'1	...
1897 ... ..	8'2	7'1	1'9	8'0	...
1898 ... ..	11'9	10'4	2'1	13'8	...
1899 ... ..	13'5	11'5	2'5	10'3	...
1900 ... ..	8'4	9'4	...	12'2	...
1901 ... ..	11'5	9'4	...	12'8	...
1902 ... ..	12'0	10'0	...	12'7	...
1903 ... ..	16'1	15'3	...	20'6	...
1904 ... ..	16'3	9'7	...	17'3	...
1905 ... ..	16'3	9'3	...	15'5	...
1906 ... ..	14'8	8'9	...	14'4	...
1907 ... ..	12'8	7'4	...	10'9	...

and Retail Prices (in seers per rupee).

furnished by the Deputy Commissioner.)

Town—Badnur.						Year.
Wages (monthly).						
Gram.	Salt.	Able-bodied agricultural labourer.	Common mason.	Common carpenter.	Common blacksmith.	
7	8	9	10	11	12	13
		Rs. a.	Rs. a.	Rs. a.	Rs. a.	
16*4	8*5	...	...	...	...	1891
13*8	8*5	...	...	...	...	1892
20*8	8*1	4 8	20 0	16 0	15 0	1893
22*2	8*5	5 0	17 0	18 0	14 8	1894
14*9	8*1	4 0	17 8	15 0	15 0	1895
12*6	8*5	4 0	17 0	13 8	13 8	1896
8*2	8*5	4 0	16 14	15 0	15 0	1897
13*9	9*1	4 0	17 8	15 0	15 0	1898
14*9	8*5	4 8	15 0	15 0	15 0	1899
9*0	8*3	5 0	15 0	15 0	15 0	1900
12*5	8*8	4 0	15 0	15 0	15 0	1901
15*0	9*0	4 8	15 0	15 0	15 0	1902
25*0	9*5	4 0	15 0	15 0	15 0	1903
22*4	10*3	4 0	15 0	15 0	15 0	1904
16*3	11*9	4 0	15 0	15 0	15 0	1905
13*6	12*3	5 0	15 0	15 0	15 0	1906
12*1	13*8	6 0	20 0	20 0	17 0	1907



## Betul District.

TABLE No. 12.---Wages (monthly)

(This Table has been compiled from information

Year.	Headquarters				
	Retail Prices (seers per rupee).				
	Wheat.	Common rice.	Cotton.	Kodon or kutki.	Linseed.
1	2	3	4	5	6
1908	8'0	6'5	...	7'5	...
1909	9'1	7'9	...	10'0	...
1910	12'8	8'4	...	13'4	...
1911	13'7	9'1	...	11'9	...
1912	14'37	8'21	...	12'32	...
1913	12'34	7'13	...	9'31	...
1914	9'35	6'95	...	9'42	...
1915	8'87	7'46	...	10'09	...
1916	10'61	7'75	...	12'20	...
1917*	9'80	6'78	...	9'44	...
1918	6'39	7'21	...	6'63	...
1919	4'97	5'22	...	5'04	...
1920	5'54	4'80	...	5'37	...
1921	5'17	5'18	...	5'38	...
1922	8'02	6'56	...	8'23	...
1923	8'22	5'45	...	7'60	...
1924	7'80	5'65	...	6'50	...
1925	6'98	5'05	...	6'60	...
1926	7'70	4'79	...	6'77	...

\*Head quarters town Betul.

and Retail Prices (in seers per rupee)—*concl'd.*

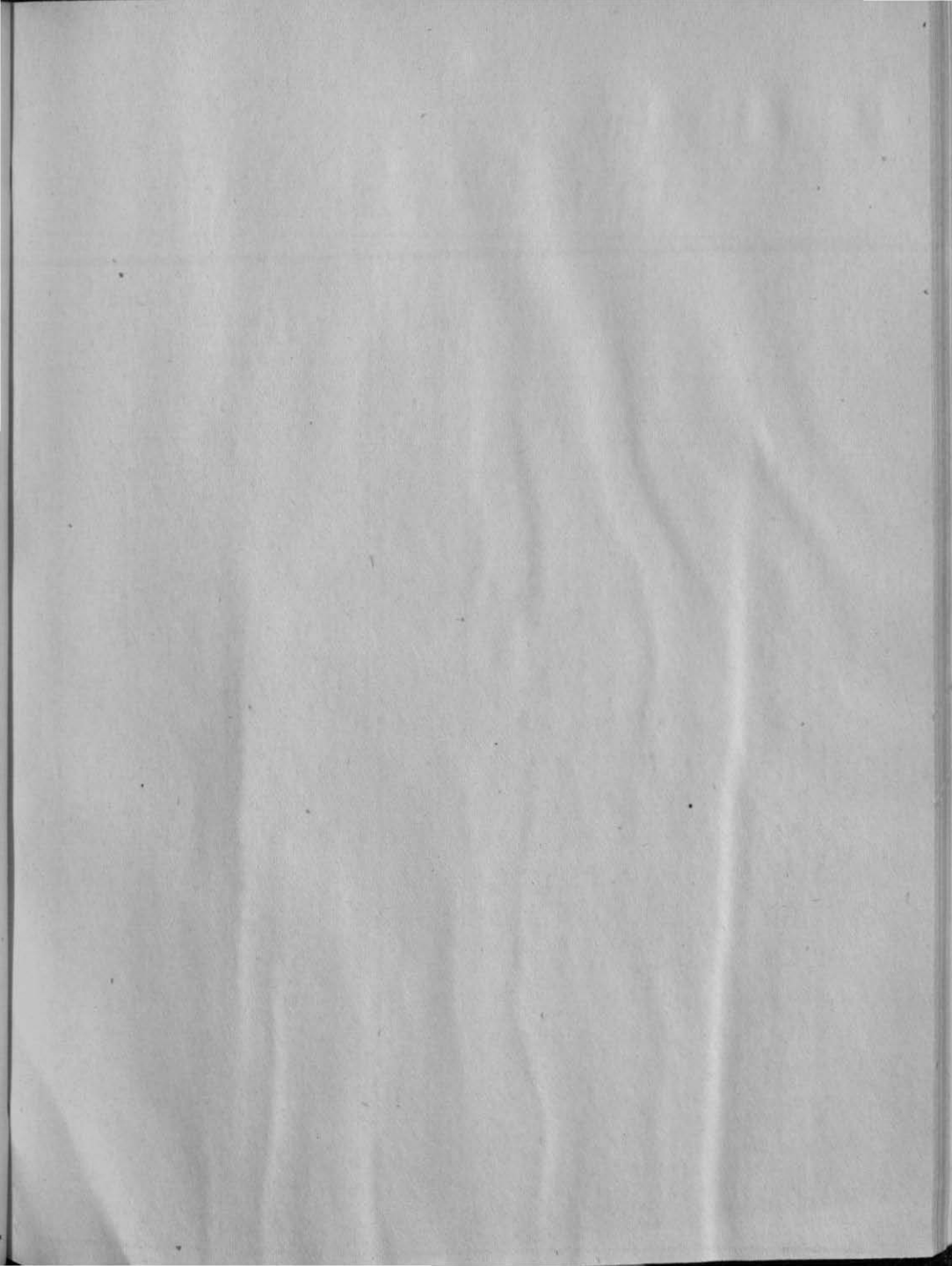
furnished by the Deputy Commissioner.)

Town - Badnur.						Year.
		Wages (monthly).				
Gram.	Salt	Able-bodied agricultural labourer.	Common mason.	Common carpenter.	Common blacksmith.	
7	8	9	10	11	12	13
		Rs. a.	Rs. a.	Rs. a.	Rs. a.	
8'9	14'5	6 0	20 0	20 0	15 0	1908
10'9	14'8	6 0	20 0	20 0	15 0	1909
16'8	14'7	5 0	20 0	15 0	15 0	1910
15'9	15'4	Rs. 5 to 8	Rs. 15 to 20	Rs. 15 to 20	Rs. 20 to 30	1911
16'80	15'43	..	Rs. 15 to 20	Rs. 15 to 20	Rs. 20 to 30	1912
14'25	14'33	Rs. 6 to 8	Rs. 15 to 25	Rs. 15 0	Rs. 20 to 25	1913
9'99	13'5	Rs. 7 to 8	Rs. 22 to 30	Rs. 15 to 25	Rs. 15 to 25	1914
9'90	14'33	Rs. 8 to 10	Rs. 18 to 22	Rs. 15 to 20	25 0	1915
11'15	14	Rs. 8 to 10	Rs. 18 to 23	Rs. 18 to 2	22 0	1916
10'60	11'02	Rs. 8 to 10	Rs. 22 to 30	Rs. 18 to 23	30 0	1917
7'77	9'92	Rs. 8 to 10	Rs. 22 to 30	Rs. 22 to 30	30 0	1918
5'59	12'14	Rs. 6 to 12	Rs. 22 to 30	Rs. 15 to 30	...	1919
6'54	11'33	Rs. 6 to 12	Rs. 22 to 30	Rs. 15 to 30	...	1920
5'40	10'84	Rs. 8 to 10	Rs. 30 to 45	Rs. 25 to 30	Rs. 25 to 35	1921
9'00	8'00	Rs. 8 to 10	Rs. 30 to 40	Rs. 15 to 40	Rs. 30 to 35	1922
10'57	8'83	Rs. 7 to 10	Rs. 30 to 40	Rs. 15 to 40	Rs. 30 to 35	1923
10'00	9'35	Rs. 7 to 10	Rs. 30 to 40	Rs. 15 to 40	Rs. 30 to 35	1924
9'09	10'54	Rs. 8 to 12	Rs. 30 to 40	Rs. 15 to 40	Rs. 30 to 35	1925
8'72	10'66	Rs. 8 to 12	Rs. 30 to 40	Rs. 15 to 40	Rs. 30 to 35	1926

## Betul District.

TABLE No. 13. — Railway Stations.

Name of Railway line.	Name of Railway station on each Railway line.	Distance of each station from (Badnur) Betul (in miles.)	Remarks.
1	2	3	4
Itarsi-Nagpur Railway	Dhodramohar	37	Distances calculated to nearest quarter of a mile.
	Barbatpur	29½	
	Ghoradongri	22½	
	Dharakho	13½	
	Maramjhiri	5½	
	Betul	...	
	Amla	14	
	Jambara	22½	
	Bordhai	30½	
	Jaolkhera	20	
	Multapi	29	
Chichanda	38		



## Betul District.

TABLE No. 14.—Roads maintained by the Public Works and Inspection Bungalows, and Encamping.

Class.	Name of Road.	Length (in miles).	Ferries.	
			Name.	Distance from Betul (in miles).
1	2	3	4	5
I	North-West Road from Dhar to Chhindwara District border <i>via</i> Betul and Multai.	75 $\frac{1}{8}$	...	...
	2 Betul Civil Station Roads	11 $\frac{1}{2}$	...	...
I	3 Multai-Bikatghat-Amraoti <i>via</i> Warud	16 $\frac{1}{2}$	...	...
I	4 Betul-Ellichpur Road from Betul to border including Khumai branch.	50 $\frac{1}{2}$	...	...
I	5 Approach Road to Railway Station Shahpur.	1 $\frac{1}{16}$	...	...
I	6 Multai-Chhindwara Road up to Border.	20 $\frac{1}{2}$	...	...
	7 Approach Road to Dhodra mohar Railway station.	$\frac{1}{2}$	...	...
	7-A Maramjhiri Railway feeder Road	1 $\frac{1}{2}$	...	...
II-B	8 Multai-Atnair-Chilkapur Road	44	...	...
II-B	9 Betul-Atnair Road	21 $\frac{1}{2}$	...	...
II-B	10 Betul-Harda Road from Kheri to 39 miles 50 and 51.	34	...	...
III-B & II-B	11 Betul from mile 39 to Hoshangabad border with ghats.	12 $\frac{1}{2}$	...	...
I-B	12 Chilkapur-Bhainsdehi Road from junction of Betul-Ellichpur Road.	6 $\frac{1}{2}$	...	...

Department, and the District Council, with Ferries, Dak grounds on them. (List according to Road Scheme.)

Dak or Inspection Bungalows.			Encamping-grounds.		Remarks.
Where situate.	Description.	Distance from Betul (in miles).	Name of place.	Distance from Betul (in miles).	
6	7	8	9	10	11
{ Betul	{ Rest house	} In first } mile.	Nimapani	13½	
	{ Circuit house		Shahpur	23	
			Dhar	35	
			Betul	1st mile.	
Nimapani	Rest-house	13½			
Shahpur	Do.	23½			
Sasundra	Do.	15	Sasundra	15	
Multai	Do.	28	Multai	28	
			Chichanda	36	
Pattan	Rest-house	38			
{ Jhallar	Do.	25½			
{ Gudgaon	Do.	31½			
{ Kotalkund	Do.	42½			
Dunawa	Rest-house	45			
{ Masod	Inspection hut	44			The first 7 miles to Kheri form a part of Betul-Ellichpur Road.
{ Atnair	Do.	23			
{ Kolgaon	Rest-house	9			
{ Atnair	Do.	22			
Chicholi	Inspection room in Police station-house and rest-house.				
Bhainsdehi	Inspection Bungalow.	6½			

## Betul District.

TABLE No. 14. — Other Local Roads and Ferries maintained by the District Council—*concl'd.*

No.	Roads.	Length (in miles).	Ferries.	River which is crossed.
	Name.		Place where situate.	
1	2	3	4	5
III	Betul-Ranipur	16	...	...
	Betul-Chhindwara	12	...	...
	Betul-Chicholi	18	Mathnighat	... Machhna.
	Shahpur-Salya	16	...	...
	Multai-Khedli	14	...	...
	Bhainsdehi-Khamla Road	14	...	...
	Nanda-Bhainsdehi	8	...	...
	9 Betul-Harda Road from Kheri to Chirapatla and borders with Dak Bungalow at Chicholi.	44½	...	...
	10 Bhainsdehi-Khamla Road	18	...	...
	11 Betul-Atnair Road with Inspection hut at Kolgaon.	21½	Tapti ghat	... Tapti.
	12 Masod-Multai-Chilkapur Road with Inspection huts at Masod and Atnair.	44	...	...
	13 Chilkapur-Bhainsdehi road from junction of Betul-Ellichpur Road.	5½	...	...



Betul District.

TABLE No. 15. Post and Telegraph Offices.

(This Table has been compiled from information furnished by the Postmaster General and the Superintendent of Telegraphs.)

Name of the Office.	Date of establishment.	Classification of the Office.	Remarks.
Betul	1852	Head Office	Established as a Head Office.
Bilaspur	1852	Sub Office	Established as a Sub Office.
Bilaspur	1852	Sub Office	Established as a Sub Office.
Bilaspur	1852	Sub Office	Established as a Sub Office.
Bilaspur	1852	Sub Office	Established as a Sub Office.
Bilaspur	1852	Sub Office	Established as a Sub Office.
Bilaspur	1852	Sub Office	Established as a Sub Office.

# Betul District.

## TABLE No. 15.—Post and Telegraph Offices.

(This Table has been compiled from information furnished by the Postmaster-General and the Superintendent of Telegraphs.)

Distributing and collecting centres, Head Offices.	Distributing and collecting centres, Sub-offices.	Branch offices.	Remarks showing how each Branch office is served.
1	2	3	4
		<i>Post Office.</i>	
Betul 1 ..	Betul combined office.	Betul Bazar* ... Bordhai ... Chicholi* ... Khedi Saoligarh* ... Kothi Bazar* ... Nimpani ... Ranipur ... Jhallar* ... Malajpur ... Kherli ...	The Branch offices marked * are connected with Betul by runner's line. Nimpani and Ranipur are connected by Railway. Betul is connected to Itarsi by Railway and is in account with Hoshangabad Head office.
...	Betul-ganj combined office.	<i>Nil</i>	This office is in account with Hoshangabad Head office and is connected to Betul by runner.
3 ..	Amla ...	Sainkhera ...	This office Amla is connected to Itarsi by Railway and is in account with Hoshangabad Head office. Branch office marked * is connected to Amla by Railway and the rest served through runners.
4 ..	Multai combined office.	Jawalkhera ... Masod ... Pattan ...	This office (Multai) is connected with Betul by Railway via Amla and it is in account with Hoshangabad Head office. All the Branch offices are served by runners.
5 ..	Shahpura (Betul) combined office.	<i>Nil</i>	This office is on the Itarsi-Nagpur line and is about a mile from Barbutpur Station. Is in account with Hoshangabad Head office.
6 ...	Bhainsdehi...	Damjipura ... Atnair ... Satner ...	This Branch office is connected to Bhainsdehi and is served by runners and the Sub-office itself is connected to Betul and served by runners. It is in account with Hoshangabad Head office.
...	...	Dhodramau ...	In account with Itarsi by Railway.
...	...	Bhanra ...	In account with Itarsi by Railway.

## Betul District.

Telegraph Offices—*concl'd.*

Name.	Class.	Remarks.
Betul ... ..	Combined	..
Betul-ganj ... ..	Do.	...
Multai ... ..	Do.	..
Shahpur ... ..	Do.	..

## Betul District.

TABLE No. 16.—Crime.

(This Table has been taken from information furnished by the District Superintendent of Police.)

Year.	Persons convicted or bound over in respect of—											Year.	
	Rioting and unlawful assembly.	Offences affecting human life.	Grievous hurt.	Cattle-theft.	Robbery and dacoity.	House-breaking and theft.	Offences relating to coin.	Pad livelihood.	Cases under Opium Act.	Cases under Excise Act.	Cases under Forest Act.		
1	2	3	4	5	6	7	8	9	10	11	12	13	
1891	..	...	...	...	Not available.		...	...	...	..	37	1891	
1892	..	...	3	4	33	...	266	...	2	3	23	21	1892
1893	...	...	5	9	29	2	118	...	1	5	67	47	1893
1894	...	28	...	10	27	...	190	4	...	4	38	52	1894
1895	..	9	1	6	10	4	202	1	2	3	30	39	1895
1896	...	...	4	14	58	1	277	...	...	1	29	165	1896
1897	...	...	3	11	303	73	517	3	...	5	16	37	1897
1898	..	5	...	9	60	10	104	...	...	2	16	57	1898
1899	...	9	10	12	85	30	273	5	2	2	63	62	1899
1900	...	...	9	6	383	19	705	4	5	2	49	116	1900
1901	...	8	3	10	70	1	163	3	1	1	56	28	1901
1902	..	3	5	10	55	8	144	5	...	3	51	18	1902
1903	...	5	7	2	13	1	90	1	7	...	42	...	1903
1904	...	...	..	11	43	...	75	2	8	1	37	...	1904
1905	...	...	3	2	23	1	72	...	...	...	18	...	1905
1906	...	...	3	6	8	1	43	...	...	...	19	...	1906
1907	...	...	13	11	19	2	608	...	2	...	13	...	1907

## Betul District.

TABLE No. 16.—Crime—concl'd.

(This Table has been taken from information furnished by the District Superintendent of Police.)

Year.	Persons convicted or bound over in respect of—											Year.	
	Rioting and unlawful assembly.	Offences affecting human life.	Grievous hurt.	Cattle-theft.	Robbery and dacoity.	House-breaking and theft.	Offences relating to coin.	Bad livelihood.	Cases under Opium Act.	Cases under Excise Act.	Cases under Forest Act.		
1	2	3	4	5	6	7	8	9	10	11	12	13	
1908	...	6	6	9	45	3	279	...	5	...	7	...	1908
1909	...	25	10	...	22	12	143	...	88	...	10	...	1909
1910	..	9	4	3	10	3	59	...	8	...	1	...	1910
1911	...	13	5	3	5	...	47	...	6	...	3	...	1911
1912	..	26	3	3	13	2	55	2	4	...	9	...	1912
1913	...	36	3	4	13	2	57	...	7	2	12	...	1913
1914	...	6	6	4	11	..	86	...	6	...	...	...	1914
1915	...	10	10	7	20	2	145	...	13	...	...	...	1915
1916	..	25	3	3	9	13	100	..	8	...	...	...	1916
1917	...	20	3	3	10	2	68	...	4	2	6	...	1917
1918	...	34	5	5	28	12	44	...	4	...	1	...	1918
1919	..	6	3	1	20	21	141	...	4	...	4	...	1919
1920	...	31	2	4	14	...	86	...	15	...	5	...	1920
1922	...	46	4	13	10	3	92	..	5	...	2	...	1922
1923	...	27	3	3	25	2	62	...	4	...	1	...	1923
1924	...	8	3	1	12	...	80	...	7	...	2	..	1924
1925	..	32	4	16	11	...	87	3	9	...	...	...	1925
1926	...	23	1	7	24	4	124	2	6	1	2	...	1926

## Betul District.

TABLE No. 17.--Criminal Justice.

(This Table has been taken from information furnished by the District Superintendent of Police.)

Year.	Cognizable crime.						Non-cognizable crime.				Year.	
	Cases reported.	Cases investigated.	Cases sent up for trial.	Persons tried.	Persons acquitted or discharged.	Persons convicted.	Total cases for disposal.	Cases dismissed without trial. (a)	Cases ending in discharge or acquittal.	Cases ending in conviction.		
1	2	3	4	5	6	7	8	9	10	11	12	
1891	...						Not available.				1891	
1892	...	1,160	611	524	673	114	555				1892	
1893	...	741	596	477	606	58	535				1893	
1894	...	622	501	379	506	53	447	Not available.			1894	
1895	...	717	511	389	608	113	488				1895	
1896	...	871	522	384	745	169	570				1896	
1897	...	1,951	1,029	718	1,548	249	1,087	933	251	75	289	1897
1898	...	998	535	366	582	204	341	Not available.			1898	
1899	...	959	670	495	864	154	686	709	228	65	398	1899
1900	...	1,983	1,385	1,097	1,710	221	1,466	Not available.			1900	
1901	...	855	661	499	685	173	478	529	256	68	188	1901
1902	...	821	552	429	570	100	442	605	273	88	221	1902
1903	...	483	402	316	408	101	299	479	175	56	238	1903
1904	...	595	400	280	448	128	242	402	202	45	123	1904
1905	...	549	259	169	343	71	267	536	302	45	158	1905
1905	...	621	247	146	177	35	142	729	270	131	192	1906

(a) Includes number of cases compounded, withdrawn, or dismissed in default of appearance.

## Betul District.

Betul District.

TABLE No. 17.—Criminal Justice—*contd.*

(This Table has been taken from information furnished by the District Superintendent of Police.)

Year.	Cognizable crime.						Non-cognizable crime.				Year.	
	Cases reported.	Cases investigated.	Cases sent up for trial.	Persons tried.	Persons acquitted or discharged.	Persons convicted.	Total cases for disposal.	Cases dismissed without trial (a).	Cases ending in discharge or acquittal.	Cases ending in conviction.		
1	2	3	4	5	6	7	8	9	10	11	12	
1907	...	824	315	161	220	31	189	747	236	99	171	1907
1908	...	1,265	589	274	421	81	340	710	192	197	174	1908
1909	...	1,198	628	334	485	118	364	567	145	275	124	1909
1910	...	696	362	154	239	63	162	660	344	161	128	1910
							+ 14 pending.				+ 27 pending.	
1911	...	741	378	192	285	106	150	548	44	...	140	1911
							29 pending.				35 pending.	
1912	...	696	419	214	288	67	209	621	106	111	172	1912
							12 pending.		190 Compounded.		42 pending.	
									296		214	
1913	...	937	503	272	392	151	228	...	...	...	...	1913
							13 pending.					
1914	...	956	517	209	341	117	180	...	...	...	...	1914
							241 pending.					
1915	...	1,301	614	297	405	109	257	...	...	...	...	1915
							39 pending persons.					
1916	...	1,138	514	233	433	143	254	...	...	...	...	1916
							36 pending.					
1917	...	1,181	511	194	304	93	190	...	...	...	...	1917
							21 pending.					

(a) Includes number of cases compounded, withdrawn, or dismissed in default of appearance.



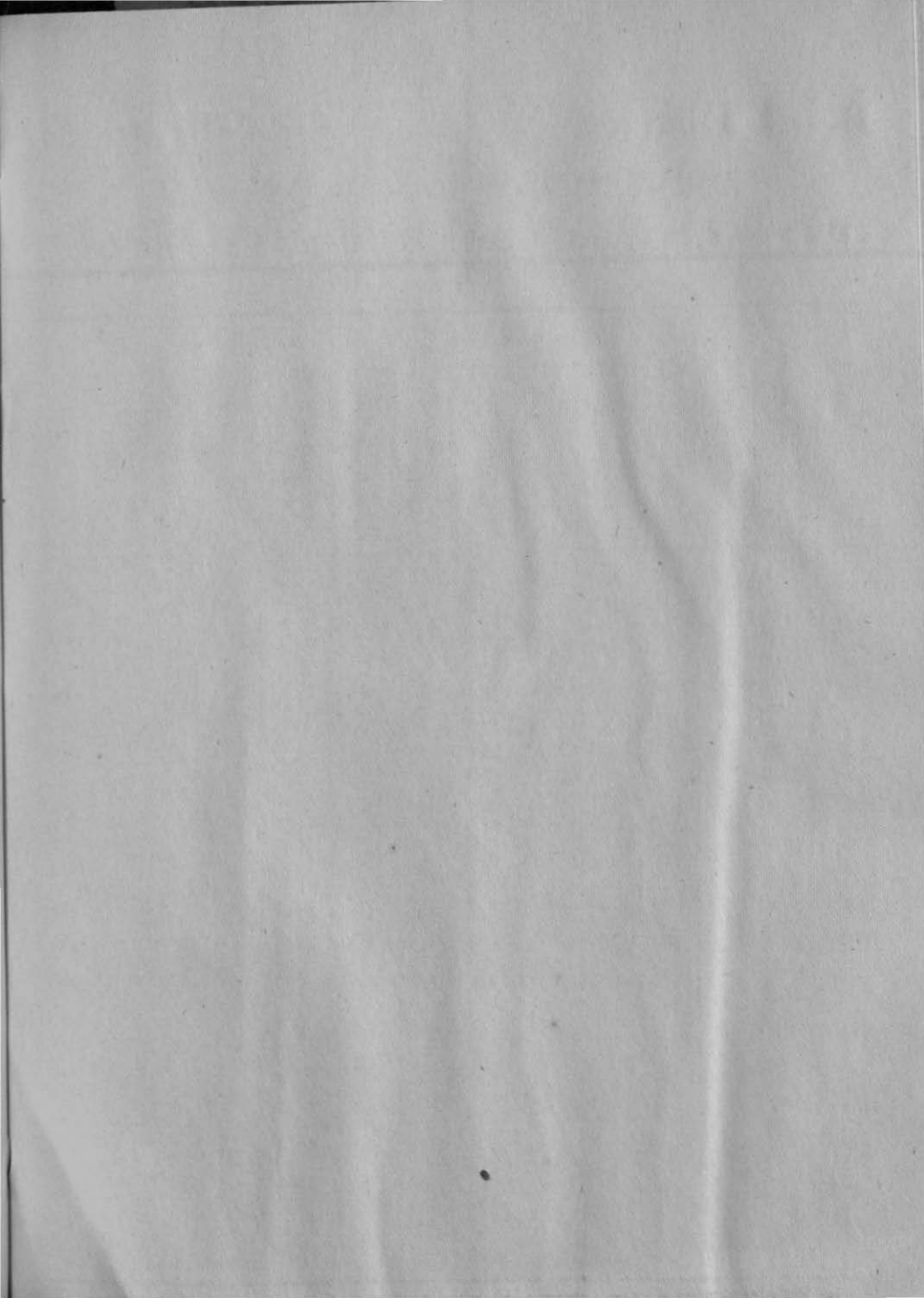
## Betul District.

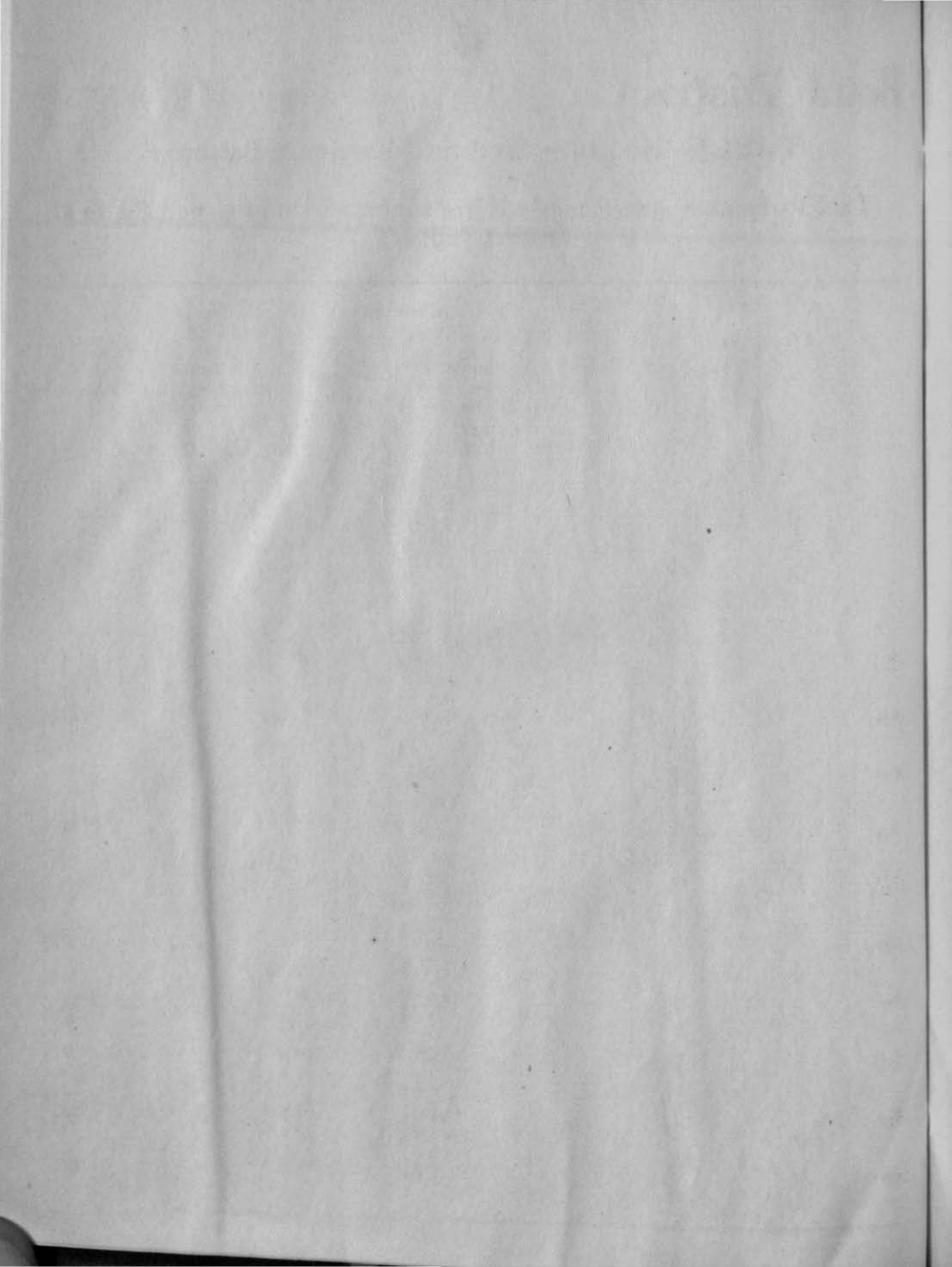
TABLE No. 17.—Criminal Justice—concl'd.

(This Table has been taken from information furnished by the District Superintendent of Police.)

Year.	Cognizable crime.						Non-cognizable crime.				Year.
	Cases reported.	Cases investigated.	Cases sent up for trial.	Persons tried.	Persons acquitted or discharged.	Persons convicted.	Total cases for disposal.	Cases dismissed without trial (a).	Cases ending in discharge or acquittal.	Cases ending in conviction.	
1	2	3	4	5	6	7	8	9	10	11	12
1918	1,708	681	278	258	136	258	...	...	...	...	1918
							19 pending.				
1919	1,921	713	244	436	174	254	...	...	...	...	1919
							8 pending.				
1920	1,348	699	192	391	146	214	...	...	...	...	1920
							31 pending.				
1922	1,102	591	219	460	166	258	...	...	...	...	1922
							36 pending				
1923	1,145	652	231	439	201	218	...	...	...	...	1923
1924	1,184	731	265	477	165	287	...	...	...	...	1924
1925	914	711	250	463	159	268	...	...	...	...	1925
1926	955	647	273	494	156	308	...	...	...	...	1926

(\*) Includes number of cases compounded, withdrawn, or dismissed in default.





## Betul District.

Betul District.

TABLE No. 18.—Civil and Revenue Business.

(This Table has been compiled from information furnished by the District Judge.)

Year.	Civil suits.		Number of principal suits between landlord and tenant.	Year.	
	Number of suits instituted.	Average value.			
1	2	3	4	5	
			Rs.		
1891	...	2,590	98	272	1891
1892	...	2,546	115	261	1892
1893	...	2,637	106	285	1893
1894	...	2,450	97	298	1894
1895	...	2,697	113	292	1895
1896	...	2,795	112	423	1896
1897	...	1,900	128	282	1897
1898	...	2,366	124	491	1898
1899	...	1,980	83	528	1899
1900	...	3,294	118	155	1900

## Betul District.

Betul District.

TABLE No. 18.—Civil and Revenue Business—*contd.*

(This Table has been compiled from information furnished by the District Judge.)

Year.	Civil Suits.				Number of principal suits between landlord and tenant.	Year.
	Sub-Divisional Courts.		District Courts.			
	Number of suits instituted.	Average value.	Number of suits instituted.	Average value.		
1	2	3	4	5	6	7
		Rs.		Rs.		
1901	1,977	54	248	628	487	1901
1902	1,834	43	205	379	546	1902
1903	2,033	52	347	363	404	1903
1904	3,423	62	494	502	506	1904
1905	2,673	58	119	1,195	337	1905
1906	2,089	57	39	1,143	224	1906
1907	2,174	55	46	2,278	257	1907
1908	1,776	62	181	761	143	1908
1909	2,613	59	60	1,294	285	1909
1910	3,144	67	141	1,794	350	1910
1911	2,785	60	73	2,011	278	1911
1912	2,604	67	83	1,413	164	1912
1913	2,599	73	62	1,834	149	1913

## Betul District.

TABLE No. 18.—Civil and Revenue Business—*concl'd.*

(This Table has been compiled from information furnished by the District Judge.)

Year.	Civil Suits.				Number of principal suits between landlord and tenant.	Year.	
	Sub-Divisional Courts.		District Courts.				
	Number of suits instituted.	Average value.	Number of suits instituted.	Average value.			
1	2	3	4	5	6	7	
		Rs.		Rs.			
1914	...	3,159	79	55	2,460	225	1914
1915	...	2,320	1,341	4	30,984	205	1915
1916	...	2,402	120	4	29,223	262	1916
1917	...	2,608	91	37	1,854	179	1917
1918	...	2,303	108	59	2,200	255	1918
1919	...	2,657	109	68	2,854	172	1919
1920	...	2,349	117	66	2,407	278	1920
1921	...	2,085	123	62	2,201	275	1921
1922	...	2,043	134	83	2,348	519	1922
1923	...	1,739	129	52	1,868	391	1923
1924	...	1,545	130	189	736	413	1924
1925	...	1,597	138	241	706	324	1925
1926	...	1,929	153	169	2,509	386	1926

## Betul District.

TABLE No. 19.— Land Revenue and Cesses (total of all kinds of Land Revenue).

(This Table is compiled from information supplied by the Deputy Commissioner.)

Year.	Current year's demand according to kistbandi and figures of demand for Land Revenue not on the roll and Miscellaneous revenue.	Remissions of current year's demand granted during the year.	Suspensions of current year's demand granted during the year.	Total collections during the year (excluding advance collections).	Advance collections adjusted during the years.	Total balance.		Remissions granted on account of balance from previous years.	Year.
						Suspended.	Unspent.		
1	2	3	4	5	6	7	8	9	10
	Rs.	Rs.	Rs.	Rs.	Rs.	Rs.	Rs.	Rs.	
1891-92 ...	2,12,124	72	...	2,11,852	205	...	2	547	1891-92
1892-93 ...	2,13,213	13	...	2,11,727	248	...	1,228	...	1892-93
1893-94 ...	1,11,331	63	...	2,12,300	104	...	21	71	1893-94
1894-95 ...	2,11,454	63	...	2,11,012	301	...	85	16	1894-95
1895-96 ...	2,11,368	33	...	2,10,828	323	...	220	49	1895-96
1896-97 ...	2,11,083	...	...	1,66,838	175	...	44,234	56	1896-97
1897-98 ...	2,39,371	7,849	5,123	2,21,171	319	5,619	45,617	3,031	1897-98
1898-99 ...	2,80,146	10,682	...	2,49,864	1,048	..	66,671	3,117	1898-99
1899-1900	2,97,866	2,781	2,80,120	6,180	2,824	2,83,872	60,977	7,904	1899-1900
1900-01 ...	3,00,175	5	67,010	2,13,320	..	97,326	45,551	2,88,822	1900-01



## Betul District.

Betul District

TABLE No. 19.—Land Revenue and Cesses (total of all kinds of Land Revenue.)—*contd.*

(This Table is compiled from information supplied by the Deputy Commissioner.)

Year.	Current year's demand according to kistbandi and figures of demand for Land Revenue not on the roll and Miscellaneous revenue.	Remissions of current year's demand granted during the year.	Suspensions of current year's demand granted during the year.	Total collections during the year (excluding advance collections).	Advance collections adjusted during the year.	Total Balance.		Remissions granted on account of balance from previous years.	Year.
						Suspended.	Unsus-pended.		
1	2	3	4	5	6	7	8	9	10
	Rs.	Rs.	Rs.	Rs.	Rs.	Rs.	Rs.	Rs.	
1901-02 ..	3,03,295	1,27,735	...	1,81,662	4,234	...	(a) 18,766	1,21,538	1901-02
1902-03 ..	3,02,783	18,292	...	2,76,613	7,664	...	1,029	...	1902-03
1903-04 ...	2,83,960	...	...	2,82,810	1,150	...	...	...	1903-04
1904-05 ...	2,85,990	...	...	2,85,951	39	...	...	...	1904-05
1905-06 ...	2,94,174	60	...	2,94,114	...	...	...	...	1905-06
1906-07 ...	2,95,396	1,140	...	2,94,256	...	...	...	...	1906-07
1907-08 ...	3,00,254	8,551	1,29,488	1,62,089	...	...	126	...	1907-08
1908-09 ...	3,04,252	1,159	...	3,38,552	231	93,866	127	1,826	1908-09
1909-10 ...	3,98,168	299	...	3,97,763	...	50	78	104	1909-10
1910-11 ...	3,02,788	5	...	3,02,763	...	...	20	...	1910-11
1911-12 ..	2,92,487	103	829	2,91,555	...	...	...	...	1911-12
1912-13 ...	2,86,680	...	...	2,86,626	54	...	...	...	1912-13
1913-14 ...	2,90,063	423	...	2,89,640	41	...	...	...	1913-14
1914-15 ...	3,03,671	127	...	3,03,582	63	...	14	...	1914-15

(a) Rs. 7,763 are shown as arrears in this year's accounts which did not appear previously.

## Betul District.

TABLE No. 19.—Land Revenue and Cesses (total of all kinds of Land Revenue)—*concl'd.*

(This Table is compiled from information supplied by the Deputy Commissioner.)

Year.	Current year's demand according to kistbandi and figures of demand for Land Revenue not on the roll and Miscellaneous revenue.	Remissions of current year's demand granted during the year.	Suspensions of current year's demand granted during the year.	Total collections during the year (excluding advance collections).	Advance collections adjusted during the year.	Total Balance.		Remissions granted on account of balance from previous years.	Year.
						Suspended.	Unsus-pended.		
1	2	3	4	5	6	7	8	9	10
	Rs.	Rs.	Rs.	Rs.	Rs.	Rs.	Rs.	Rs.	
1915-16 ...	3,04,203	...	...	(b) 3,03,735	497	...	(c) 14	...	1915-16
1916-17 ...	3,04,959	...	...	3,04,486	473	...	...	14	1916-17
1917-18 ...	3,05,086	1	4,766	3,00,038	167	4,766	114	...	1917-18
1918-19 ...	3,63,038	13,683	1,66,903	1,80,687	395	1,66,903	1,294	14	1918-19
1919-20 ...	3,64,955	...	...	3,63,698	489	459	309	...	1919-20
1920-21 ...	3,89,657	2,506	1,84,852	1,96,828	489	1,84,852	4,982	522	1920-21
1921-22 ...	3,90,177	...	...	3,87,915	1,091	...	1,171	19	1921-22
1922-23 ...	4,02,930	678	...	4,01,368	844	...	40	132	1922-23
1923-24 .	4,02,024	83	...	4,01,653	178	...	110	23	1923-24
1924-25 ...	4,01,507	...	...	3,96,751	250	...	4,506	...	1924-25
1925-26 ...	4,10,248	1,755	...	3,96,508	528	...	11,557	...	1925-26

## Betul District.

## BETUL TAHSIL.

TABLE No. 19(a).—Land Revenue and Cesses by Tahsils (a).

(This Table has been compiled from information supplied by the Deputy Commissioner.)

Year.	Current year's demand according to kistbandi (Land Revenue on the roll and Cesses).	Total collections during the year.	Total balance.	Year.
1	2	3	4	5
	Rs.	Rs.	Rs.	
1891-92	99,304	99,304	...	1891-92
1892-93	99,284	99,284	...	1892-93
1893-94	99,284	99,284	...	1893-94
1894-95	99,291	99,291	...	1894-95
1895-96	99,291	99,291	...	1895-96
1896-97	99,296	99,294	2	1896-97
1897-98	99,299	86,636	12,563	1897-98
1898-99	1,24,979	81,181	43,798	1898-99
1899-1900	1,50,291	1,19,078	31,213	1899-1900
1900-01	1,52,224	1,423	1,50,801	1900-01
1901-02	1,54,082	95,979	59,003	1901-02
1902-03	1,54,891	83,344	71,547	1902-03
1903-04	1,62,516	1,62,516	...	1903-04
1904-05	1,62,478	1,62,478	...	1904-05

(a) The totals of the tahsil accounts will not necessarily correspond with the district accounts, because suspensions and remissions and corrections in the statements are frequently not brought on to the tahsil accounts in the year to which they refer. The figures in the tahsil tables also do not include Land Revenue not on the roll and Miscellaneous Land Revenue.

## Betul District.

Betul District

BETUL TAHSIL.

TABLE No. 19(a).—Land Revenue and Cesses by Tahsils (a)  
(This Table has been compiled from information supplied by the  
Deputy Commissioner.)

Year.	Current year's demand according to kistbandi (Land Revenue on the roll and Cesses).	Total collections during the year.	Total balance.	Year.
1	2	3	4	5
	Rs.	Rs.	Rs.	
1905-06	1,60,681	1,60,681	...	1905-06
1906-07	1,59,749	1,59,749	...	1906-07
1907-08	1,63,606	86,916	...	1907-08
1908-09	1,58,784	1,76,826	60,418	1908-09
1909-10	1,38,203	1,38,203	...	1909-10
1910-11	1,05,472	1,05,467	...	1910-11
1911-12	1,05,398	1,05,398	...	1911-12
1912-13	99,905	99,905	...	1912-13
1913-14	99,432	99,432	...	1913-14
1914-15	1,05,370	1,05,370	...	1914-15
1915-16	1,05,238	1,05,233	...	1915-16
1916-17	1,05,242	1,05,254	...	1916-17
1917-18	(b) 10,5,241	(c) 1,00,500	(d) 4,724	1917-18

(a) The totals of the tahsil accounts will not necessarily correspond with the district accounts because suspensions and remissions and corrections in the statements are frequently not brought on to the tahsil accounts in the year to which they refer. The figures in the tahsil tables also do not include Land Revenue not on the roll and Miscellaneous Land Revenue.

(b) Remission of Re. 1 on account of land acquired.

(c) Includes Rs. 17 advance collection.

(d) Suspension.

## Betul District.

BETUL TAHSIL.

TABLE No. 19(b).—Land Revenue and Cesses by Tahsils. (a)

(This Table has been compiled from information supplied by the Deputy Commissioner.)

Year.	Current year's demand according to kistbandi (Land Revenue on the roll and Cesses).	Total collections during the year.	Total balance.	Year.
1	2	3	4	5
	Rs.	Rs.	Rs.	
1918-19	1,35,236	87,356	42,755	1918-19
1919-20	1,35,346	1,35,342	4	1919-20
1920-21	(a) 1,35,346	99,023	35,682	1920-21
1921-22	1,42,945	(a) 1,42,519	270	1921-22
1922-23	1,44,003	(a) 1,43,935	...	1922-23
1923-24	1,44,396	1,44,326	...	1923-24
1924-25	1,44,520	1,44,520	...	1924-25
1925-26	1,44,539	1,44,468	...	1925-26

(a) The totals of the tahsil accounts will not necessarily correspond with the district accounts, because suspensions and remissions and corrections in the statements are frequently not brought on to the tahsil accounts in the year to which they refer. The figures in the tahsil tables also do not include Land Revenue not on the roll and Miscellaneous Land Revenue.

(a) Rs. 68 were remitted and Rs. 2 adjusted on account of advance collection on previous year.

(a) Rs. 44 were adjusted on account of the advance collection of previous year Rs. 24 remitted during the year.

(a) Excludes Rs. 156 on account of advance collections in previous year.

(a) Includes Rs. 529 remitted and Rs. 112 advance collections.

(f) Rs. 71 advance collection.

## Betul District.

BHAINSDEHI TAHSIL.

TABLE No. 19(c).—Land Revenue and Cesses by Tahsils (a)

(This Table has been compiled from information supplied by the Deputy Commissioner.)

Year.	Current year's demand according to Kistbandi (Land Revenue on the roll and Cesses).	Total collections during the year.	Total Balance.	Year.
I	2	3	4	5
	Rs.	Rs.	Rs.	
1909-10	80,969	80,969	...	1909-10
1910-11	53,284	53,284	...	1910-11
1911-12	53,253	53,253	...	1911-12
1912-13	50,460	50,460	...	1912-13
1913-14	50,504	50,504	...	1913-14
1914-15	53,214	53,214	...	1914-15
1915-16	53,333	53,338	...	1915-16
1916-17	53,333	53,332	...	1916-17
1917-18	53,333	53,337	...	1917-18
1918-19	53,333	15,535	37,833	1918-19
1919-20	53,333	53,333	...	1919-20
1920-21	(a) 74,824	29,950	44,698	1920-21
1921-22	81,640	(b) 81,164	206	1921-22
1922-23	82,635	82,392	(c) 40	1922-23
1923-24	82,643	82,573	...	1923-24
1924-25	(d) 82,583	83,548	...	1924-25
1925-26	(e) 82,919	81,900	34	1925-26

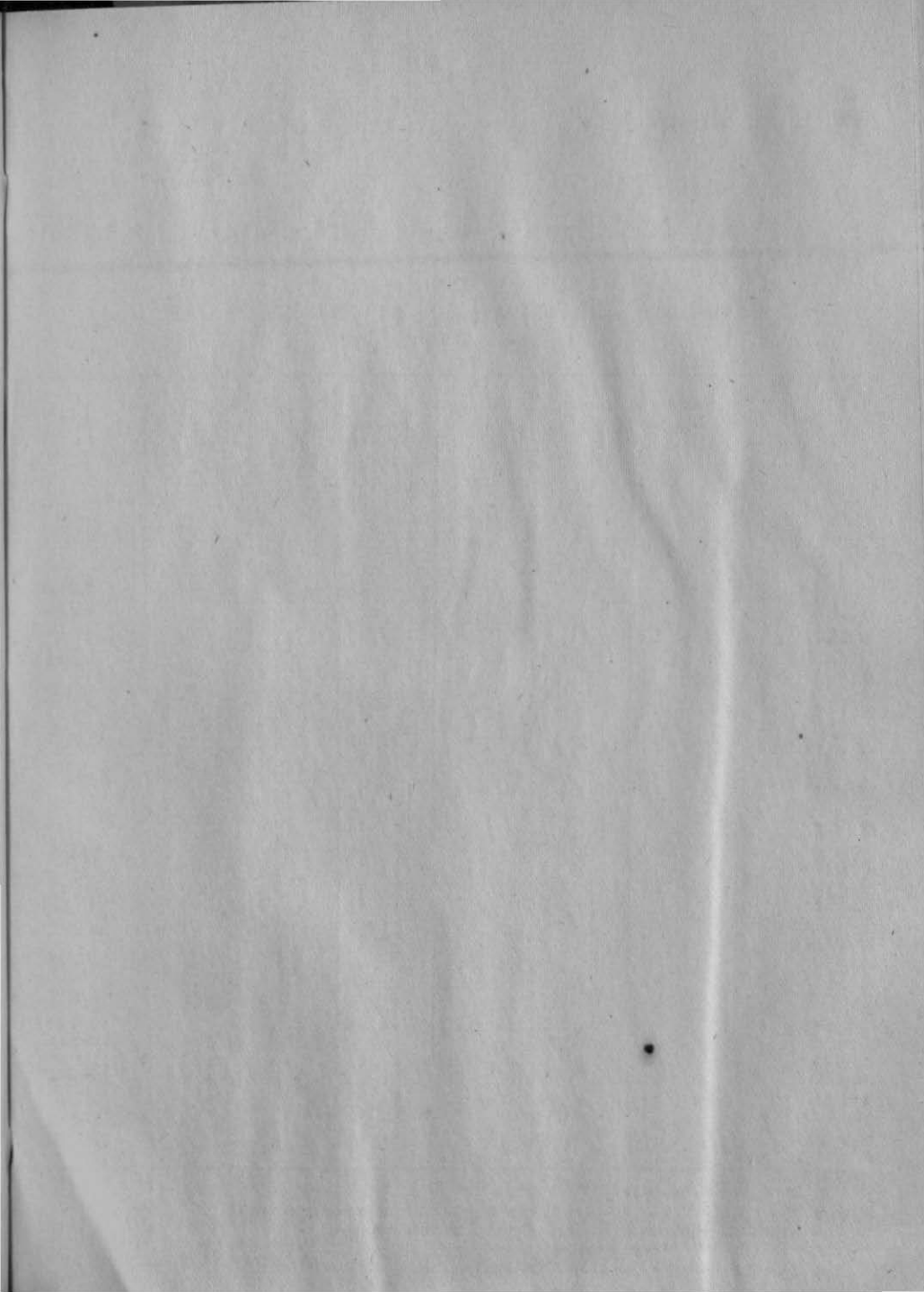
(a) Includes Rs. 176 advance collections.

(b) Excludes Rs. 270 on account of advance collection in previous year.

(c) Advance Collection of Rs. 203 of previous year adjusted.

(d) Do. Rs. 35 do.

(e) Includes Rs. 107 adjusted and Rs. 878 remitted.





## Betul District.

TABLE No. 20.--

(This Table has been taken from Imperial

Year.	Receipts						
	Imported liquors.	Country spirits and fermented liquors.					
		Duty.	Vend fees.	Outstill receipts.	Total country spirits.	Tari licence fees.	Total country spirits and fermented liquors.
I	2	3	4	5	6	7	8
	Rs.	Rs.	Rs.	Rs.	Rs.	Rs.	Rs.
1891-92	...	12,609	13,959	1,01,254	1,27,832	...	1,27,832
1892-93	30	9,176	13,894	1,00,160	1,23,230	...	1,23,230
1893-94	...	9,183	14,100	1,14,421	1,37,704	...	1,37,704
1894-95	...	8,669	14,500	1,13,200	1,36,369	...	1,36,369
1895-96	...	13,288	11,518	1,26,704	1,57,510	...	1,57,510
1896-97	...	9,120	12,162	1,37,325	1,58,607	...	1,58,607
1897-98	...	9,173	9,034	90,256	1,08,463	...	1,08,463
1898-99	...	9,360	10,899	91,411	1,11,670	...	1,11,670
1899-1900	...	7,523	8,830	78,149	94,502	...	94,502
1900-01	...	7,140	7,162	66,831	81,133	...	81,133
1901-02	...	7,643	7,036	76,076	90,755	...	90,755
1902-03	...	9,920	8,859	87,281	1,06,060	...	1,06,060
1903-04	...	14,529	10,660	1,14,196	1,39,385	...	1,39,385
1904-05	...	15,488	12,768	1,56,676	1,84,932	...	1,84,932
1905-06	...	17,009	30,599	1,69,781	2,17,389	...	2,17,389
1906-07	...	55,842	86,637	1,09,201	2,51,680	...	2,51,680

## Excise (a).

Form I attached to Excise Administration Reports.)

from.—						Year.
Opium.			Ganja and Bhang.			
Duty.	Licence fees.	Total.	Duty.	Licence fees.	Total.	
9	10	11	12	13	14	15
Rs.	Rs.	Rs.	Rs.	Rs.	Rs.	
14,322	7,935	22,257	1,884	3,308	5,192	1891-92
13,772	7,750	21,522	1,876	3,287	5,163	1892-93
14,608	7,803	22,411	1,880	3,527	5,407	1893-94
13,816	9,063	22,879	2,026	4,442	6,468	1894-95
14,553	8,116	22,709	2,269	3,884	6,153	1895-96
12,441	7,826	20,267	2,133	3,612	5,745	1896-97
11,132	5,715	16,847	1,909	2,925	4,834	1897-98
10,417	5,746	16,163	2,223	2,534	4,757	1898-99
10,426	5,244	15,670	2,421	2,254	4,675	1899-1900
10,221	5,126	15,347	2,703	2,816	5,519	1900-01
10,272	4,462	14,734	2,863	2,130	4,993	1901-02
10,670	5,260	15,930	2,547	2,547	5,094	1902-03
13,007	5,501	18,508	3,172	2,456	5,628	1903-04
13,200	7,336	20,536	3,415	3,136	6,551	1904-05
16,081	6,730	22,811	4,245	3,321	7,566	1905-06
14,739	8,013	22,752	4,902	4,946	9,848	1906-07

(a) Excludes Zamindari takolis and Miscellaneous Revenue.

## Betul District.

TABLE No. 20.—  
(This Table has been taken from Imperial

Year.	Receipts						
	Imported liquors.	Country spirits and fermented liquors.					
		Duty.	Vend fees.	Outstill receipts.	Total country spirits.	Tari licence fees.	Total country spirits and fermented liquors.
1	2	3	4	5	6	7	8
	Rs.	Rs.	Rs.	Rs.	Rs.	Rs.	Rs.
1907-08	24	1,17,602	92,097	22,947	2,32,646	...	2,32,646
1908-09	24	90,780	1,39,033	15,087	2,44,900	34	2,44,934
1909-10	50	90,930	1,14,306	18,722	2,23,958	920	2,24,878
1910-11	50	1,17,501	1,23,746	9,144	2,50,391	310	2,50,701
1911-12	50	1,40,260	1,18,392	...	2,58,652	66	2,58,712
1912-13	65	1,75,002	1,34,223	...	3,09,225	...	3,09,225
1913-14	50	1,76,937	1,50,705	...	3,27,643	145	3,27,788
1914-15	50	1,54,713	1,69,702	...	3,24,415	215	3,24,660
1915-16	50	1,68,965	1,40,001	...	3,08,966	200	3,09,166
1916-17	50	2,80,204	67,948	...	3,48,252	249	3,48,501
1917-18	50	2,67,398	89,639	...	3,57,037	354	3,57,391

## Excise (a)—contd.

Form I attached to Excise Administration Reports.)

From—						Year.
Opium.			Ganja and Bhang.			
Duty.	Licence fees.	Total.	Duty.	Licence fees.	Total.	
9	10	11	12	13	14	15
Rs.	Rs.	Rs.	Rs.	Rs.	Rs.	
15,421	6,022	21,423	5,104	3,231	8,335	1907-08
14,459	8,685	23,145	(b) 4,313	(c) 5,467	(d) 9,780	1908-09
15,632	7,676	23,308	(e) 5,318	(f) 5,968	(g) 11,286	1909-10
18,436	8,768	27,204	6,371	6,833	13,204	1910-11
19,498	10,528	29,826	6,536 Bhang 46	7,662 Bhang 158	14,198 + 46 + 158	1911-12
21,853	8,700	30,553	7,196	5,653	12,849	1912-13
21,436	9,141	30,577	7,381	6,608 Bhang 112 Charas 64	14,165	1913-14
20,776	13,465	34,241	7,058	8,730	15,788	1914-15
20,477	13,267	33,744	8,460	6,817	15,277	1915-16
15,792	14,184	29,940	8,769	8,549	17,318	1916-17
14,304	14,675	28,979	6,209	8,727	14,936	1917-18

(a) Excludes Zamindari takolis and Miscellaneous Revenues.

(b) Includes Rs. 120 duty on charas.

(c) Rs. 109 licence fee.

(d) Excludes Rs. 5 Ganja Store House fee.

(e) Includes Rs. 24 duty on charas.

(f) Do. Rs. 74 licence fee.

(g) Do. Rs. 5 Store House fees.

## Betul District.

TABLE No. 20.—

(This Table has been taken from Imperial

Year.	Receipts						
	Imported liquors.	Country spirits and fermented liquors.					
		Duty.	Vend fees.	Outstill receipts.	Total country spirits.	Tari licence fees.	Total country spirits and fermented liquors.
1	2	3	4	5	6	7	8
	Rs.	Rs.	Rs.	Rs.	Rs.	Rs.	Rs.
1918-19	50	2,91,153	88,139	...	3,79,292	390	3,79,682
1919-20	50	3,57,277	95,696	...	4,52,973	351	4,53,324
1920-21	75	2,57,184	1,46,250 38,789	...	4,03,434	299	4,03,808
1921-22	71	1,23,716	+ 100 Distillery fees.	...	1,62,605	171	1,62,847
April 1922 to December 1922	19	1,00,065	41,339	...	1,41,404	31	1,41,438
1923	75	1,34,323	36,848	...	1,71,171	41	1, 1,212
1924	113	1,65,678	(a) 57,087	...	2,22,765	152	2,22,917
1925	192	2,34,474	(a) 92,232	...	3,30,706	542	3,31,248
1926	311	1,91,796	1,54,865	...	3,46,661	1,290	3,47,957

(a) Includes Rs. 100 Distillery fees.

## Excise (a)—concl'd.

Form I attached to Excise Administration Reports.)

From—

Opium.			Ganja and Bhang.			Year.
Duty.	Licence fees.	Total.	Duty.	Licence fees.	Total.	
9	10	11	12	13	14	15
Rs.	Rs.	Rs.	Rs.	Rs.	Rs.	
11,280	14,162	25,442	5,628	8,003	13,631	1918-19
13,376	16,194	29,570	8,154	8,165	16,319	1919-20
13,752	14,844	28,596	10,094	8,124	18,218	1920-21
13,652	8,704	22,356	9,421	5,151	14,572	1921-22
9,680	9,628	19,308	7,557	5,377	12,934	April 1922 to December 1922
11,841	10,233	22,074	11,765	5,698	17,463	1923
13,555	14,326	27,881	11,970	8,870	20,840	1924
26,527	14,267	40,794	13,876	7,878	21,754	1925
23,418	16,976	40,394	13,349	7,576	20,925	1926

(a) Excludes zamindari takolis and Miscellaneous Revenues.

## Betul District.

TABLE No. 21.—Income-tax.

(This table has been compiled from information supplied by the Deputy Commissioner.)

Year.	(a) Total receipts.	Receipts from—			Objections under Part IV.		Year.		
		Paid by Compan- ies.	Other sources, Part IV.		Number filed.	Amount remit- ted.			
			Number of asses- sees. (b)	Tax. (b)					
1	2	3	4	5	6	7	8		
	Rs.	Rs.		Rs.		Rs.			
1891-92 ...	8,103	...	330	7,983	28	237	1891-92		
1892-93 ...	8,152	...	345	7,989	151	1,000	1892-93		
1893-94 ...	7,948	...	330	7,757	42	440	1893-94		
1894-95 ...	8,254	...	335	7,663	38	111	1894-95		
1895-96 ...	7,413	...	305	7,208	96	786	1895-96		
			Number of asses- sees under Rs. 2,000.	Tax.	Number of asses- sees over Rs. 2,000.				
				Rs.	Rs.				
1896-97 ...	7,570	154	274	4,449	30	2,734	16	140	1896-97
1897-98 ...	7,285	188	260	4,182	28	2,505	56	312	1897-98
1898-99 ...	7,049	159	256	4,062	27	2,477	43	96	1898-99
1899-1900 ...	6,756	163	210	3,712	21	2,658	68	850	1899-1900
1900-01 ...	5,907	218	218	3,649	22	2,231	41	466	1900-01

(a) The figures in this column show district collections and exclude salaries paid by Govern-  
ment, etc.

(b) For the years 1891-92 to 1895-96 the statement shows the number and amount assessed and  
for subsequent years the amount and number from whom the tax was collected.



TABLE No. 21.—Income-tax—*contd.*

(This Table has been compiled from information supplied by the Deputy Commissioner.)

Year.	Receipts from—						Objections under Part IV.		Year.
	(a) Total receipts.	Paid by Companies.	Other sources, Part IV.				Number filed.	Amount remitted.	
			Number of assesses under Rs. 2,000	Tax.	Number of assesses over Rs. 2,000	Tax.			
1	2	3	4	5	6	7	8	9	10
	Rs.	Rs.		Rs.		Rs.		Rs.	
1901-02 ...	6,218	221	214	3,546	21	2,178	18	56	1901-02
1902-03 ...	5,201	240	187	3,056	19	1,759	8	107	1902-03
1903-04 ...	3,468	154	63	1,626	18	1,591	22	281	1903-04
1904-05 ...	3,978	226	76	1,868	15	1,862	8	279	1904-05
1905-06 ...	3,788	186	71	1,713	16	1,937	12	254	1905-06
1906-07 ...	4,067	175	60	1,521	18	2,187	11	312	1906-07
1907-08 ...	3,840	175	62	1,515	18	2,086	2	40	1907-08
1908-09 ...	3,519	141	50	1,230	18	2,100	5	106	1908-09
1909-10 ...	3,703	127	49	1,239	19	2,164	7	123	1909-10
1910-11 ...	6,299	375	50	1,348	34	4,468	17	587	1910-11
1911-12 ...	(b) 11,161	...	83	2,227	43	8,080	26	259	1911-12
1912-13 ...	10,446	208	103	2,776	44	10,106	33	(c) 384	1912-13

(a) The figures in this column show district collections and exclude salaries paid by Government, etc.

(b) This amount includes the excess collection.

(c) Includes Rs. 251 refunded in April 1912.

## Betul District.

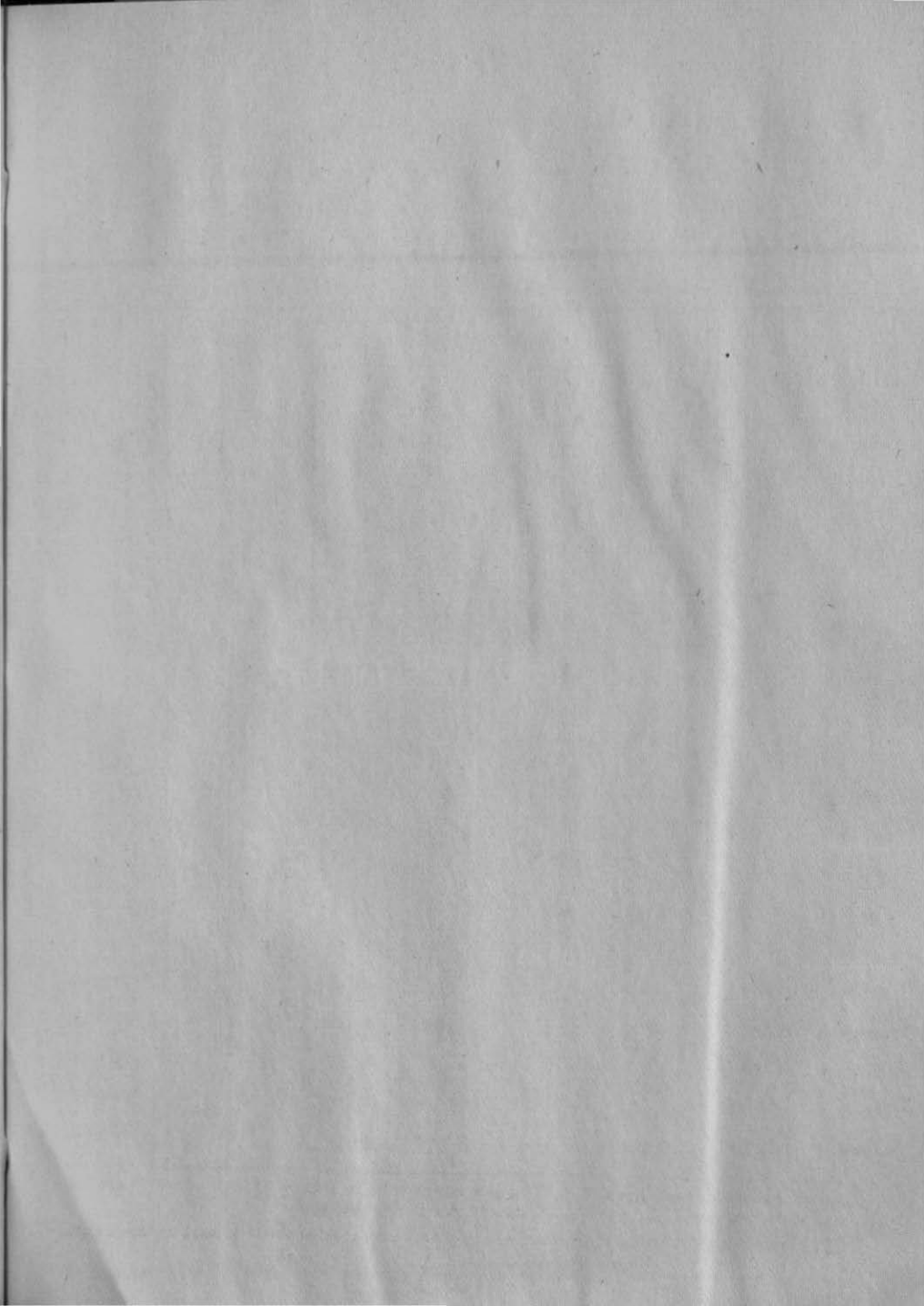
TABLE No. 21.—Income-tax—concl'd.

(This Table has been compiled from information supplied by the Deputy Commissioner.)

Year.	Receipts from—						Objections under Part IV.		Year.
	(a) Total receipts.	Paid by Companies.	Other sources, Part IV.				Number filed.	Amount remitted.	
			Number of assesses under Rs. 2,000	Tax.	Number of assesses over Rs. 2,000	Tax.			
1	2	3	4	5	6	7	8	9	10
	Rs.	Rs.		Rs.		Rs.		Rs.	
1913-14 ...	7,355	140	116	2,863	30	7,037	50	158	1913-14
1914-15 ...	5,354	137	108	2,724	31	2,897	30	335	1914-15
1915-16 ...	6,648	226	119	2,995	33	3,172	37	272	1915-16
1916-17 ...	18,561	247	174	4,375	69	13,728	68	2,463	1916-17
1917-18 ...	19,483	324	191	4,924	72	13,888	59	390	1917-18
1918-19 ...	16,632	310	100	5,104	59	11,059	16	157	1918-19
1919-20 ...	18,007	174	...	...	113	18,400	52	113	1919-20
1920-21 ...	19,756	115	...	...	98	21,362	16	944	1920-21
1921-22 ...	20,268	...	...	...	131	20,268	11	330	1921-22
1922-23 ...	26,239	...	...	...	93	26,239	27	...	1922-23
1923-24 ...	19,922	407	...	...	81	19,515	8	776	1923-24

(Further statistics the Income-tax Department objects to furnish *Vide* Central Board of Revenue Circular No. 43-C.No. 733-I.T. 26, dated the 11th October 1926.)

(a) The figures in this column show district collections and exclude salaries paid by Government etc.



## Betul District.

TABLE No. 22.—General Revenue Statistics.

(This Table has been compiled from the Departmental Annual Reports.)

Year.	Total receipts from—						Year.
	Land Revenue and Cesses. (a)	Stamps.	Excise.	Income-tax.	Forests.	Registration.	
I	2	3	4	5	6	7	8
	Rs.	Rs.	Rs.	Rs.	Rs.	Rs.	
1891-92	2,11,852	47,403	1,54,611	8,103	82,580	3,415	1891-92
1892-93	2,11,727	43,727	1,49,955	8,152	99,997	3,173	1892-93
1893-94	2,12,300	49,094	1,65,604	7,948	67,830	3,634	1893-94
1894-95	2,11,012	48,621	1,65,870	8,254	69,562	3,749	1894-95
1895-96	2,10,828	50,082	1,80,375	7,143	64,618	3,748	1895-96
1896-97	1,66,838	46,180	1,84,661	7,570	51,036	4,303	1896-97
1897-98	2,21,171	40,678	1,30,148	7,285	61,804	3,428	1897-98
1898-99	2,49,864	41,051	1,32,600	7,049	73,100	3,500	1898-99
1899-1900	6,180	30,530	1,14,857	6,756	73,955	1,551	1899-1900
1900-01	2,13,320	28,915	1,02,005	6,907	79,382	1,761	1900-01

\*) Includes Land Revenue not on the roll and Miscellaneous Land Revenue.

TABLE No. 22.—General Revenue Statistics—*concl'd.*

(This Table has been compiled from the Departmental Annual Reports.)

Year.	Total receipts from—							Year.
	Land Revenue.	Cesses.	Stamps.	Excise.	Income-tax.	Forests.	Registration.	
1	2	3	4	5	6	7	8	9
	Rs.	Rs.	Rs.	Rs.	Rs.	Rs.	Rs.	
1901-02 ...	1,68,382	13,280	39,840	1,10,490	6,218	80,788	3,105	1901-02
1902-03 ...	2,78,133	16,061	32,851	1,27,086	6,797	70,112	725	1902-03
1903-04 ...	2,63,945	19,117	31,378	1,63,522	5,068	71,612	2,041	1903-04
1904-05 ...	2,66,418	19,533	36,128	2,12,041	5,312	79,594	2,545	1904-05
1905-06 ...	2,79,056	15,058	37,511	2,47,706	5,294	88,545	2,374	1905-06
1906-07 ...	2,79,651	15,057	35,011	2,84,555	5,717	1,10,639	2,199	1906-07
1907-08 ...	1,51,709	10,380	42,789	2,62,874	4,959	...	2,836	1907-08
1908-09 ...	3,17,700	20,852	44,351	2,78,307	5,804	93,225	3,600	1908-09
1909-10 ...	3,81,857	15,906	52,439	2,59,940	5,799	1,04,106	2,349	1909-10
1910-11 ...	2,87,005	15,886	59,058	2,93,415	6,299	1,15,257	3,512	1910-11
1911-12 ...	2,77,099	15,387	53,982	3,03,788	11,161	1,35,423	3,863	1911-12
1912-13 ...	2,86,679	15,914	66,093	3,54,953	10,446	1,10,378	3,909	1912-13
1913-14 ...	2,89,640	15,894	70,018	3,74,421	7,355	1,69,975	4,089	1913-14
1914-15 ...	2,87,602	15,872	69,852	3,70,094	5,954	1,60,611	4,101	1914-15
1915-16 ...	2,88,332	15,876	62,169	3,60,325	6,648	1,56,037	4,111	1915-16
1916-17 ...	2,88,763	15,890	70,440	3,68,055	18,561	1,93,956	4,078	1916-17
1917-18 ...	2,84,703	15,730	65,137	4,03,048	19,483	...	4,624	1917-18
1918-19 ...	1,64,095	17,184	71,281	4,20,294	16,632	2,10,298	6,348	1918-19
1919-20 ...	3,30,096	18,290	81,290	4,99,263	18,007	2,77,355	6,656	1919-20
1920-21 ...	1,78,979	13,329	77,642	4,52,240	19,756	2,37,274	7,340	1920-21
1921-22 ...	3,69,783	20,394	77,722	3,00,474	20,268	2,10,748	8,186	1921-22
1922-23 ...	3,78,455	22,913	88,189	1,74,481	26,239	2,19,824	7,483	1922-23
1923-24 ...	3,30,600	23,038	95,065	2,35,775	19,515	2,27,687	8,319	1923-24
1924-25 ...	3,73,676	23,075	1,00,440	3,93,795	...	2,20,237	8,270	1924-25
1925-26 ...	3,73,525	22,983	1,04,440	4,11,330	...	1,83,734	7,503	1925-26

## Betul District.

TABLE No. 23.—Income and Expenditure.  
(This Table has been taken from Statements II and

Year.	Income.							
	Local rates.	Receipts under Cattle Trespass Act.	Education receipts.	Rents on Nazul lands.	Ferries.	Contributions from Provincial Revenues.	Other receipts.	Total receipts.
1	2	3	4	5	6	7	8	9
	Rs.	Rs.	Rs.	Rs.	Rs.	Rs.	Rs.	Rs.
1891-92	7,807	5,748	1	78	6	3,223	2,969	19,832
1892-93	7,804	6,872	30	98	10	6,801	2,657	24,272
1893-94	7,812	5,823	42	84	8	9,219	3,612	26,600
1894-95	7,800	5,867	394	75	13	6,920	4,246	25,315
1895-96	7,805	5,650	448	50	12	8,811	5,151	27,927
1896-97	7,277	6,038	28	55	14	6,000	6,681	26,093
1897-98	7,313	6,327	63	50	2	8,000	8,081	29,836
1898-99	9,515	4,195	97	...	9	8,000	6,072	27,888
1899-1900	6,432	5,867	111	..	2	8,000	24,754	45,166
1900-01	4,492	6,433	49	...	5	8,000	2,857	21,836
1901-02	11,287	5,602	581	...	...	11,039	2,933	31,442
1902-03	11,277	4,174	183	...	...	28,324	4,972	48,930
1903-04	12,818	4,523	405	...	...	16,989	7,774	42,509
1904-05	13,334	5,187	65	...	...	16,614	7,580	42,780
1905-06	13,842	4,809	37	...	...	26,922	8,887	54,497
1906-07	15,366	5,649	325	...	...	29,324	11,831	62,495

## Expenditure from District Funds.

III attached to the District Council Reports.)

Expenditure.								Year.
Establishment.	Cattle Pound charges.	Education.	Medical charges.	Civil works.	Veterinary charges.	Other expenditure.	Total expenditure.	
10	11	12	13	14	15	16	17	18
Rs.	Rs.	Rs.	Rs.	Rs.	Rs.	Rs.	Rs.	
1,308	2,291	6,554	2,197	6,282	...	2,354	20,986	1891-92
1,352	2,248	6,871	2,140	6,452	...	5,103	24,166	1892-93
1,562	2,129	7,830	2,065	4,302	...	(a) 7,865	25,753	1893-94
1,795	2,424	7,120	2,247	4,395	...	(a) 6,466	24,447	1894-95
1,706	2,257	8,937	2,770	4,023	...	9,433	29,126	1895-96
1,715	2,196	7,003	3,588	3,830	...	13,880	32,212	1896-97
1,756	2,490	7,696	3,090	5,289	...	8,936	29,257	1897-98
1,812	2,643	7,442	2,840	3,710	...	9,271	27,718	1898-99
1,768	2,635	6,789	2,870	1,508	...	30,751	46,321	1899-1900
1,675	2,568	6,309	2,714	1,489	...	(a) 6,417	21,172	1900-01
1,718	2,483	6,788	2,446	7,480	...	(b) 8,359	29,774	1901-02
1,826	3,447	10,512	2,694	14,412	...	10,951	43,872	1902-03
1,764	3,065	15,825	3,079	4,056	...	17,265	45,054	1903-04
1,905	2,664	11,224	4,889	3,128	...	14,920	38,730	1904-06
1,594	2,973	17,469	3,684	5,738	...	18,206	40,664	1905-06
2,063	3,493	25,497	5,053	8,220	440	20,926	65,691	1906-07

(a) Include Rs. 3,908, 3,600, and 4,800, respectively, on account of other petty establishments and charges.

(b) Includes Rs. 4,800 on account of other petty establishments and charges.



## Betul District.

TABLE No. 23.—Income and Expendi-

(This Table has been taken from Statements II and

Year.	Income.							
	Local rates.	Receipts under Cattle Trespass Act.	Education receipts.	Rents on Nazul lands.	Ferries.	Contributions from provincial Revenue.	Other receipts.	Total receipts.
1	2	3	4	5	6	7	8	9
	Rs.	Rs.	Rs.	Rs.	Rs.	Rs.	Rs.	Rs.
1907-08	11,194	6,861	509	...	10	28,400	24,306	71,280
1908-09	14,779	6,688	464	...	3	32,000	15,471	69,405
1909-10	20,838	6,809	827	...	3	29,834	15,010	73,411
1910-11	16,184	7,139	774	...	2	29,000	9,451	22,550
1911-12	15,850	8,948	804	...	3	29,768	10,278	65,651
1912-13	15,938	9,191	1,001	...	...	32,129	9,951	68,210
1913-14	15,929	10,008	1,077	...	3	43,588	16,386	86,991
1914-15	15,897	10,386	2,242	...	3	59,431	11,375	98,334
1915-16	15,897	8,532	1,042	...	3	62,904	8,720	97,098
1916-17	15,899	8,712	953	...	53	93,532	18,155	1,37,304
1917-18	15,859	9,031	901	...	38	1,15,434	2,321	1,43,584
1918-19	14,197	12,013	432	...	11	85,120	39,678	1,51,451
1919-20	20,487	12,623	414	...	25	97,454	4,831	1,35,824
1920-21	13,109	10,714	46	...	4	95,647	1,491	1,21,011
1921-22	26,259	7,893	583	...	8	1,05,550	1,613	1,41,912
1922-23	24,393	9,802	1,370	...	18	78,940	1,356	1,15,879
1923-24	23,215	9,537	832	...	16	79,454	1,519	1,14,573
1924-25	23,094	9,997	625	...	21	82,047	2,462	1,18,246
1925-26	22,705	10,727	742	...	4	80,539	1,077	1,15,794

ture from District Funds—concl'd.

(III attached to the District Council Reports.)

Expenditure.								Year.
Establishment.	Cattle pound charges.	Education.	Medical charges.	Civil works.	Veterinary charges.	Other expenditure.	Total expenditure.	
10	11	12	13	14	15	16	17	
Rs.	Rs.	Rs.	Rs.	Rs.	Rs.	Rs.	Rs.	
2,371	3,754	19,210	3,186	21,743	1,124	26,266	77,654	1907-08
2,518	5,592	19,466	3,911	19,627	1,283	15,721	68,118	1908-09
2,403	4,668	21,342	3,358	22,346	1,347	12,746	68,210	1909-10
3,240	4,585	20,986	3,512	18,436	1,763	9,782	62,304	1910-11
3,381	4,213	22,226	3,617	16,644	1,803	10,928	62,812	1911-12
3,139	3,931	23,717	4,173	19,972	2,245	8,657	65,834	1912-13
3,224	4,146	23,490	4,308	29,213	2,568	9,301	76,250	1913-14
3,591	4,519	19,318	4,925	42,562	2,619	10,134	97,668	1914-15
4,205	4,174	30,012	5,294	19,886	2,299	11,074	77,544	1915-16
3,772	4,101	30,466	5,543	39,911	2,058	3,832	89,983	1916-17
3,862	4,476	33,507	4,787	91,161	2,417	4,377	1,44,587	1917-18
15,118	6,117	40,032	4,865	65,594	2,688	42,513	1,66,027	1918-19
5,523	7,161	45,175	5,624	57,882	2,664	8,056	1,32,085	1919-20
7,892	6,161	45,233	7,150	62,635	2,711	6,538	1,38,114	1920-21
9,744	5,751	48,484	7,544	85,416	3,702	9,865	1,70,506	1921-22
9,777	5,538	46,211	7,732	44,979	3,290	7,217	1,24,744	1922-23
8,375	5,339	48,222	7,756	31,703	3,712	8,054	1,13,116	1923-24
10,095	5,577	50,509	8,035	29,734	3,800	9,196	1,16,946	1924-25
8,407	5,504	55,281	8,295	30,834	3,846	3,646	1,15,813	1925-26

## Betul District.

BETUL BAZAR NOTIFIED AREA.

TABLE No. 24.—Income and

(This Table has been taken from Statements II

Year.	Income.													
	Octroi.	House-tax.	Water rate.	Conservancy.	Pounds.	Markets and slaughter houses.	Loans.	Market dues.	Grants and contributions from Government for Educational purposes.	Fees and Revenue from Educational Institutions.	Other receipts.	Total receipts.	General Administration.	of Collection taxes.
I	2	3	4	5	6	7	8	9	10	11	12	13	14	15
	Rs.	Rs.	Rs.	Rs.	Rs.	Rs.	Rs.	Rs.	Rs.	Rs.	Rs.	Rs.	Rs.	Rs.
1891-92 ...	...	1,535	...	...	370	...	...	742	361	...	2,343	5,351	383	103
1892-93 ...	...	1,515	...	...	360	...	...	704	...	...	(a) 1,131	3,710	390	96
1893-94 ...	...	1,467	...	144	321	...	...	924	722	...	708	4,286	475	93
1894-95 ...	...	1,696	...	506	401	...	...	800	361	...	895	4,659	534	83
1895-96 ...	...	1,840	...	512	457	...	...	673	361	...	884	4,727	696	64
1896-97 ...	...	1,836	...	441	317	...	...	603	361	...	756	4,314	807	54
1897-98 ...	...	1,458	...	353	302	...	...	557	361	...	727	3,758	740	35
1898-99 ...	...	2,018	...	513	284	...	...	565	361	...	921	4,662	931	36
1899-1900 ...	...	2,132	...	436	255	...	...	540	361	...	782	4,506	863	18
1900-01 ...	...	1,699	...	359	271	...	...	...	361	...	(b) 1,930	4,620	625	52
1901-02 ...	...	1,947	...	437	321	...	...	428	361	...	(c) 1,589	5,083	686	73

(a) Includes Rs. 209 on account of fees on the registration of cattle.

(b) Includes Rs. 931 on account of fees on the registration of cattle.

(c) Includes Rs. 657 on account of fees on the registration of cattle.

## Expenditure of Municipalities.

and III attached to the Municipal Reports.)

Expenditure.												Year.
Refunds.	Lighting.	Water-supply.	Drainage.	Conservancy.	Medical and vaccination.	Markets and slaughter houses.	Roads.	Education.	Repayment of loans.	Other expenditure.	Total expenditure.	
16	17	18	19	20	21	22	23	24	25	26	27	28
Rs.	Rs.	Rs.	Rs.	Rs.	Rs.	Rs.	Rs.	Rs.	Rs.	Rs.	Rs.	Rs.
...	...	...	983	743	259	52	337	1,653	...	1,097	5,610	1891-92
...	...	...	438	717	260	4	463	1,268	...	523	4,149	1892-93
...	...	11	24	776	340	89	636	995	...	343	3,782	1893-94
...	...	11	157	1,147	1,046	...	371	1,042	...	912	5,302	1894-95
...	...	239	299	1,098	171	90	411	1,019	...	426	4,513	1895-96
...	...	268	326	1,143	390	14	413	1,051	...	547	5,013	1896-97
...	...	...	4	1,395	440	...	71	953	...	455	4,093	1897-98
...	8	33	54	1,170	450	...	231	934	...	454	4,301	1898-99
...	...	26	651	1,220	434	...	19	1,023	...	550	4,804	1899-1900
...	...	21	49	1,374	442	...	288	1,014	...	465	4,328	1900-01
...	...	33	29	1,250	440	...	298	994	...	840	4,643	1901-02

## Betul District.

BETUL BAZAR NOTIFIED AREA.

TABLE No. 24.--Income and

(This Table has been taken from Statements II)

Year.	Income.											General Admini- stration.	of Collection taxes.	
	Octroi.	House-tax.	Water rate.	Conservancy.	Pounds.	Markets and slaughter houses.	Loans.	Market dues,	Grants and con- tributions from Govern ment for Educational purposes.	Fees and Revenue from Educa- tional Institu- tions.	Other receipts.			Total receipts.
1	2	3	4	5	6	7	8	9	10	11	12	13	14	15
	Rs.	Rs.	Rs.	Rs.	Rs.	Rs.	Rs.	Rs.	Rs.	Rs.	Rs.	Rs.	Rs.	Rs.
1902-03 ...	...	1,854	...	431	190	...	...	806	361	...	666	4,308	753	13
1903-04 ...	...	1,083	...	424	116	...	...	765	361	...	574	3,323	612	...
1904-05 ...	...	1,735	...	451	200	...	...	952	361	...	502	4,201	633	...
1905-06 ...	...	1,560	...	456	246	...	...	1,258	361	...	619	4,500	601	...
1906-07 ...	...	1,574	...	443	252	...	...	1,206	361	...	944	4,780	670	...
1907-08 ...	...	1,465	...	498	297	...	...	1,130	361	...	568	4,319	320	...
1908-09 ...	...	1,391	...	490	275	...	...	1,276	360	...	347	4,139	387	...
1909-10 ...	...	1,407	...	503	191	...	...	1,211	361	...	834	4,506	350	...
1910-11 ...	...	1,482	...	940	272	...	...	1,500	360	...	699	4,853	374	...
1911-12 ...	...	1,113	...	373	388	...	...	1,200	2,528	...	564	6,166	425	...
1912-13 ...	...	1,836	...	635	561	...	...	2,050	1,528	...	1,032	7,642	376	...
1913-14 ...	...	1,647	...	503	512	...	...	1,976	1,128	...	796	6,562	371	...
1914-15 ...	...	1,603	...	602	402	...	...	1,683	1,128	...	785	6,203	409	...
1915-16 ...	...	1,663	...	635	401	...	...	1,861	1,128	...	951	6,639	421	...
1916-17 ...	...	1,598	...	623	352	...	...	1,894	1,128	...	802	6,397	424	...
1917-18 ...	...	1,601	...	609	357	...	...	1,839	1,128	...	724	6,258	428	...

Expenditure of Municipalities—*contd.*

and III attached to the Municipal Reports.)

## Expenditure\*

Refunds.	Lighting.	Water-supply.	Drainage.	Conservancy.	Medical and vaccination.	Markets and slaughter houses.	Roads.	Education.	Repayment of loans.	Other expenditure.	Total expenditure.	Year.
16	17	18	19	20	21	22	23	24	25	26	27	28
Rs.	Rs.	Rs.	Rs.	Rs.	Rs.	Rs.	Rs.	Rs.	Rs.	Rs.	Rs.	
...	...	51	31	1,297	607	...	373	979	...	598	4,702	1902-03
...	...	48	41	1,238	82	...	91	1,005	..	500	3,617	1903-04
...	...	48	30	1,195	247	..	169	1,089	...	548	3,959	1904-05
...	..	42	41	1,395	220	...	229	788	...	666	3,982	1905-06
..	...	49	252	1,385	235	50	311	1,050	...	775	4,777	1906-07
...	...	75	264	1,400	220	24	364	946	..	493	4,106	1907-08
...	..	..	236	1,527	352	12	152	1,180	..	302	4,178	1908-09
...	9	29	229	1,531	125	...	248	1,545	...	625	4,694	1909-10
...	6	...	38	1,427	150	...	250	1,189	...	705	4,139	1910-11
...	3	...	45	1,714	158	10	446	1,675	...	825	5,239	1911-12
...	...	11	44	1,498	193	...	129	3,662	...	1,854	7,767	1912-13
...	1	...	215	1,597	248	...	257	2,858	...	752	6,299	1913-14
...	147	45	346	2,086	296	24	345	2,014	...	711	6,423	1914-15
...	204	12	54	1,823	285	79	445	2,172	...	814	6,309	1915-16
...	200	...	198	1,674	152	4	164	2,359	...	829	6,004	1916-17
...	76	...	50	1,763	463	7	1,190	2,342	...	1,769	8,088	1917-18



## Betul District.

BETUL BAZAR NOTIFIED AREA.

TABLE No. 24.—Income and

(This Table has been taken from Statements II

Year.	Income.													General Admini- stration. Collection of taxes.
	Octroi.	House-tax.	Water rate.	Conservancy.	Pounds.	Markets and slaughter houses.	Loans.	Market dues.	Grants and con- tributions from Government for Educational purposes.	Fees and revenue from Educa- tional Insti- tutions.	Other receipts.	Total receipts.		
I	2	3	4	5	6	7	8	9	10	11	12	13	14	15
	Rs.	Rs.	Rs.	Rs.	Rs.	Rs.	Rs.	Rs.	Rs.	Rs.	Rs.	Rs.	Rs.	Rs.
1918-19 ...	...	1,601	...	193	490	...	...	3,141	1,128	126	2,904	8,583	481	...
1919-20 ...	...	1,609	...	628	646	...	...	2,731	1,749	109	1,335	8,807	390	...
1920-21 ...	...	1,527	...	570	638	...	...	1,853	1,479	105	1,005	7,183	307	...
1921-22 ...	...	1,808	...	751	418	...	...	1,485	1,868	103	1,311	7,684	407	...
1922-23 ...	...	1,935	...	771	349	...	...	1,698	2,022	108	1,841	8,724	426	...
1923-24 ...	...	1,711	...	083	456	...	...	1,346	1,915	107	621	7,140	442	...
1924-25 ...	...	1,233	...	812	449	...	...	1,400	1,915	118	2,209	8,127	451	...
1925-26 ...	...	1,482	...	899	212	...	...	1,452	1,915	48	579	6,587	486	...



Expenditure of Municipalities—*contd.*

(and III attached to the Municipal Reports.)

Expenditure.												Year.
Refunds.	Lighting.	Water-supply.	Drainage.	Conservancy.	Medical and vaccination.	Markets and slaughter houses.	Roads.	Educati n.	Repayment of loans.	Other expen- diture	Total expendi- ture.	
16	17	18	19	20	21	22	23	24	25	26	27	28
Rs.	Rs.	Rs.	Rs.	Rs.	Rs.	Rs.	Rs.	Rs.	Rs.	Rs.	Rs.	
...	150	...	34	1,695	326	...	158	2,648	...	1,276	6,768	1918-19
...	100	...	77	2,701	367	...	485	2,718	...	1,398	8,236	1919-20
...	48	...	75	2,498	325	...	470	2,700	...	1,225	7,648	1920-21
...	29	...	78	2,427	365	...	565	2,855	...	1,997	8,723	1921-22
...	42	...	16	2,291	634	..	364	2,960	...	1,578	8,311	1922-23
...	...	...	34	2,253	472	...	211	3,170	...	804	7,386	1923-24
...	123	..	37	2,153	471	...	200	3,411	...	1,133	7,979	1924-25
...	90	2	80	2,053	430	...	297	1,915	...	764	6,117	1925-26

## Betul District.

BETUL MUNICIPALITY.

TABLE No. 24.—Income and  
(This Table has been taken from Statements II)

Year.	Income.											
	Octroi.	House-tax.	Water rate.	Conservancy.	Pounds.	Markets and slaughter-houses.	Loans.	Grants and contributions from Government for Educational purposes.	Market dues.	Fees and Revenue from Educational Institutions.	Other receipts.	Total receipts.
1	2	3	4	5	6	7	8	9	10	11	12	13
	Rs.	Rs.	Rs.	Rs.	Rs.	Rs.	Rs.	Rs.	Rs.	Rs.	Rs.	Rs.
1891-92 ...	...	1,553	...	...	870	...	...	...	754	...	(a) 3,299	6,475
1892-93 ...	...	1,526	...	706	815	...	...	4,712	746	558	2,305	11,368
1893-94 ...	...	1,540	...	733	744	...	...	2,356	764	629	(a) 5,182	11,943
1894-95 ...	...	1,596	...	683	798	...	...	2,590	703	643	1,236	8,249
1895-96 ...	...	2,000	...	838	1,025	...	...	2,356	765	732	1,209	8,925
1896-97 ...	...	1,715	...	675	877	...	...	2,356	683	659	1,283	8,248
1897-98 ...	...	1,855	...	692	1,107	...	...	2,356	609	753	1,467	8,899
1898-99 ...	...	2,193	...	1,112	813	...	...	2,356	744	772	1,685	9,675
1899-1900 ...	...	2,571	...	664	626	...	...	2,356	706	859	1,625	9,407
1900-01 ...	...	2,346	...	754	810	...	...	2,356	682	916	1,577	9,441

(a) Include Rs. 541 and 1,719 respectively on account of grants and contributions from other sources for Medical purposes.

Expenditure of Municipalities.—*contd.*  
and III attached to the Municipal Reports.)

Expenditure.															Year.
General Admini- stration,	of Collection taxes.	Refunds.	Lighting.	Water-supply.	Drainage.	Conservancy.	Medical and vaccination.	Markets and slaughter houses.	Roads.	Education.	Repayment of loans.	Other expendi- ture.	Total expendi- ture.	28	
14	15	16	17	18	19	20	21	22	23	24	25	26	27	28	
Rs.	Rs.	Rs.	Rs.	Rs.	Rs.	Rs.	Rs.	Rs.	Rs.	Rs.	Rs.	Rs.	Rs.	Rs.	
434	100	...	...	875	...	1,177	1,235	...	985	156	...	1,768	6,730	1891-92	
399	79	...	...	328	...	1,776	1,271	...	1,044	4,991	...	1,304	11,192	1892-93	
499	98	...	...	199	49	1,733	2,535	50	1,165	3,052	...	2,539	11,919	1893-94	
671	28	2	...	119	99	1,680	601	39	1,070	3,350	...	871	8,570	1894-95	
970	24	...	...	150	98	1,696	737	48	1,259	3,104	...	701	8,787	1895-96	
1,474	30	...	...	258	98	1,858	610	38	409	3,041	...	815	8,631	1896-97	
1,293	29	3	...	149	27	2,021	809	13	761	3,117	...	987	9,209	1897-98	
1,547	31	21	...	94	95	1,849	810	4	397	3,300	...	1,116	9,264	1898-99	
1,524	...	4	...	298	29	1,898	720	...	385	3,115	...	1,017	8,990	1899-1900	
1,437	16	22	...	254	45	1,814	917	3	208	3,165	...	1,350	9,231	1900-01	

## Betul District.

BETUL MUNICIPALITY,

TABLE No. 24.—Income and

(This Table has been taken from Statements II)

Year.	Income.											
	Octroi.	House-tax.	Water rate.	Conservancy.	Pounds.	Markets and slaughter houses.	Loans.	Grants and contributions from Government for Educational purposes.	Market dues.	Fees and Revenue from Educational Institutions.	Other receipts.	Total receipts
1	2	3	4	5	6	7	8	9	10	11	12	13
	Rs.	Rs.	Rs.	Rs.	Rs.	Rs.	Rs.	Rs.	Rs.	Rs.	Rs.	Rs.
1901-02 ...	2,537	696	781	...	...	...	...	2,356	747	1,226	1,263	9,606
1902-03 ...	2,525	713	656	...	...	...	...	2,326	704	1,134	1,468	9,556
1903-04 ...	2,534	730	620	54	...	...	...	2,360	666	905	1,115	8,984
1904-05 ...	2,568	801	602	77	...	...	...	2,500	603	802	1,069	9,022
1905-06 ...	2,686	783	477	72	...	...	...	2,510	662	846	1,330	9,366
1906-07 ...	2,657	815	604	86	...	...	...	2,500	664	825	1,125	9,276
1907-08 ...	2,858	878	723	98	...	...	...	2,626	769	752	6,746	15,550
1908-09 ...	3,388	866	747	109	...	...	...	2,536	759	755	6,300	15,460
1909-10 ...	3,657	996	770	129	...	...	...	2,736	1,048	873	1,425	11,688
1910-11 ...	3,738	966	738	237	...	...	...	2,536	1,053	1,009	1,375	11,652
1911-12 ...	3,581	916	833	...	...	...	...	2,500	923	1,024	994	10,771
1912-13 ...	4,752	1,163	873	298	...	...	...	2,593	997	1,505	1,021	13,202
1913-14 ...	4,249	1,091	1,270	248	...	...	...	3,000	1,065	1,604	1,029	14,456
1914-15 ...	4,232	1,720	1,254	236	...	...	...	4,500	1,167	1,949	1,984	17,042
1915-16 ...	4,424	1,425	1,332	250	...	...	...	3,000	1,147	2,536	4,213	18,326

Expenditure of Municipalities—*contd.*

and III attached to the Municipal Reports.)

Expenditure.													Year.	
General Admini- stration.	of Collection taxes.	Refunds.	Lighting.	Water-supply.	Drainage.	Conservancy.	Medical and vaccination.	Markets and slaughter houses.	Roads.	Education.	Repayment or loans.	Other expendi- ture.		Total expendi- ture.
14	15	16	17	18	19	20	21	22	23	24	25	26	27	28
Rs.	Rs.	Rs.	Rs.	Rs.	Rs.	Rs.	Rs.	Rs.	Rs.	Rs.	Rs.	Rs.	Rs.	
1,168	29	...	...	84	49	1,837	892	44	223	3,566	..	1,271	9,163	1901-02
1,118	22	...	...	69	43	1,832	1,134	5	891	3,959	..	1,123	10,206	1902-03
1,149	7	96	...	50	40	1,826	1,184	10	240	3,607	...	1,164	9,273	1903-04
1,109	...	...	..	48	40	1,832	882	92	257	3,630	...	1,027	8,917	1904-05
891	...	...	...	50	46	1,689	772	6	512	3,635	...	1,034	8,640	1905-06
1,014	...	...	15	58	61	1,995	700	32	480	3,653	...	831	8,839	1906-07
934	...	...	...	45	204	2,010	700	44	747	3,665	...	622	8,971	1907-08
1,232	...	...	119	100	308	2,089	977	32	724	3,715	..	12,440	21,736	1908-09
1,053	...	...	127	104	142	2,100	846	347	614	3,960	...	1,652	10,945	1909-10
1,125	...	...	229	108	129	2,255	710	120	695	4,327	...	1,391	11,099	1910-11
1,192	...	...	252	32	195	2,528	1,048	198	915	4,635	...	979	11,924	1911-12
1,227	...	...	286	127	192	2,734	848	191	1,256	5,119	...	1,431	13,411	1912-13
1,285	...	32	320	294	175	2,707	897	129	535	5,047	...	1,252	12,673	1913-14
1,091	...	...	317	177	145	2,627	1,257	83	530	5,682	...	1,997	14,906	1914-15
1,084	...	...	502	119	207	3,161	710	83	1,325	6,388	...	2,428	16,007	1915-16

## Betul District.

BETUL MUNICIPALITY.

TABLE No. 24.—Income and

(This Table has been taken from Statements II)

Year.	Income.												Total receipts.	General Administration.
	Octroi.	House-tax.	Water rate.	Conservancy.	Pounds.	Markets and slaughter houses.	Loans.	Grants and contributions from Government for Educational purposes.	Market dues.	Fees and revenue from Educational Institutions.	Other receipts.			
	1	2	3	4	5	6	7	8	9	10	11	12		
	Rs.	Rs.	Rs.	Rs.	Rs.	Rs.	Rs.	Rs.	Rs.	Rs.	Rs.	Rs.	Rs.	Rs.
1916-17	...	4,695	..	1,913	1,383	274	...	3,000	1,159	2,472	4,533	19,429	1,186	
1917-18	2,288	4,218	...	1,713	1,395	228	...	1,082	1,183	1,438	7,579	21,124	1,463	
1918-19	6,503	4,633	...	2,073	1,621	180	...	1,517	1,222	1,154	6,132	25,035	2,946	
1919-20	8,758	4,824	...	2,007	1,625	150	10,000	1,367	1,216	1,223	30,427	61,587	3,575	
1920-21	5,923	4,871	...	2,315	1,333	98	..	2,551	1,281	1,149	6,025	25,546	3,313	
1921-22	8,556	6,188	...	2,830	1,036	130	..	2,843	14,115	701	5,622	29,321	3,597	
1922-23	7,905	5,551	...	2,508	1,190	192	...	1,988	1,432	150	7,333	28,229	4,147	
1923-24	6,515	5,833	...	2,494	1,331	178	..	2,070	1,479	145	4,668	34,613	4,270	
1924-25	7,262	5,727	...	2,658	1,414	188	...	2,070	1,390	140	5,761	26,610	4,466	
1925-26	9,240	6,784	...	2,500	1,044	185	..	2,070	2,332	665	3,812	27,632	4,260	



Batal District  
MUTUAL NOTIFICATION

**Expenditure of Municipalities -- contd.**  
and III attached to the Municipal Reports.)

Expenditure.													Year.
Collection of taxes.	Refunds.	Lighting.	Water-supply.	Drainage.	Conservancy.	Medical and vaccination.	Markets and slaughter houses.	Roads.	Education.	Repayment of loans.	Other expenditure.	Total expenditure.	
15	16	17	18	19	20	21	22	23	24	25	26	27	28
Rs.	Rs.	Rs.	Rs.	Rs.	Rs.	Rs.	Rs.	Rs.	Rs.	Rs.	Rs.	Rs.	Rs.
...	...	523	32	67	3,787	1,036	3,069	1,532	5,940	...	3,944	21,116	1916-17
...	60	242	1,064	105	4,115	1,007	36	5,679	4,054	...	9,336	27,161	1917-18
...	322	737	412	352	5,854	352	65	2,799	5,402	...	6,630	25,871	1918-19
...	...	803	544	407	5,382	434	122	2,178	6,092	10,000	25,782	55,319	1919-20
...	...	754	419	981	5,904	526	1,890	1,234	6,400	...	5,583	27,014	1920-21
...	...	927	543	61	5,772	594	4,053	782	6,666	...	6,116	29,021	1921-22
...	...	1,109	495	501	5,974	619	1,810	1,954	4,559	...	7,007	28,175	1922-23
...	...	1,316	487	188	5,830	633	177	1,352	4,529	...	5,033	23,815	1923-24
...	...	1,307	248	486	6,358	638	18	956	5,456	...	9,158	29,084	1924-25
...	...	1,455	309	256	6,352	651	252	2,876	5,688	...	7,996	30,095	1925-26



## Betul District.

MULTAI NOTIFIED AREA.

TABLE No. 24.—Income and

(This Table has been taken from Statements II

Year.	Income.													General Admini- stration.
	Octroi.	House-tax.	Water rate.	Conservancy.	Pounds.	Markets and slaughter houses.	Loans.	Grants and contributions from Government for Educational purposes.	Market dues.	Fees and revenue from Educational Institutions.	Other receipts.	Total receipts.		
1	2	3	4	5	6	7	8	9	10	11	12	13	14	
	Rs.	Rs.	Rs.	Rs.	Rs.	Rs.	Rs.	Rs.	Rs.	Rs.	Rs.	Rs.	Rs.	
1914-15 ...	...	1,155	...	380	95	...	...	...	326	...	575	2,531	255	
1915-16 ..	...	2,642	...	833	379	...	...	...	687	...	622	5,163	649	
1916-17 ...	...	2,913	...	761	173	...	...	...	648	...	367	4,892	681	
1917-18 ...	...	2,827	...	707	221	...	...	...	671	...	524	4,950	674	
1918-19 ...	...	2,760	...	806	289	...	...	...	690	...	333	4,878	812	
1919-20 ...	...	2,500	...	895	392	...	...	...	755	...	4,412	8,937	901	
1920-21 ...	...	1,522	...	786	412	...	...	...	781	...	599	4,100	936	
1921-22 ...	...	2,917	...	1,053	189	...	...	...	776	...	2,025	6,960	1,925	
1922-23 ...	...	2,803	...	1,117	164	...	...	...	832	...	887	5,903	1,115	
1923-24 ...	...	2,662	...	1,668	378	...	...	...	849	...	923	6,480	1,469	
1924-25 ...	...	2,592	...	1,526	394	...	...	...	814	...	1,114	6,440	1,656	
1925-26 ...	...	2,561	...	1,576	480	...	...	...	877	...	626	6,120	957	

Expenditure of Municipalities—*concl'd.*

and III attached to the Municipal Reports.)

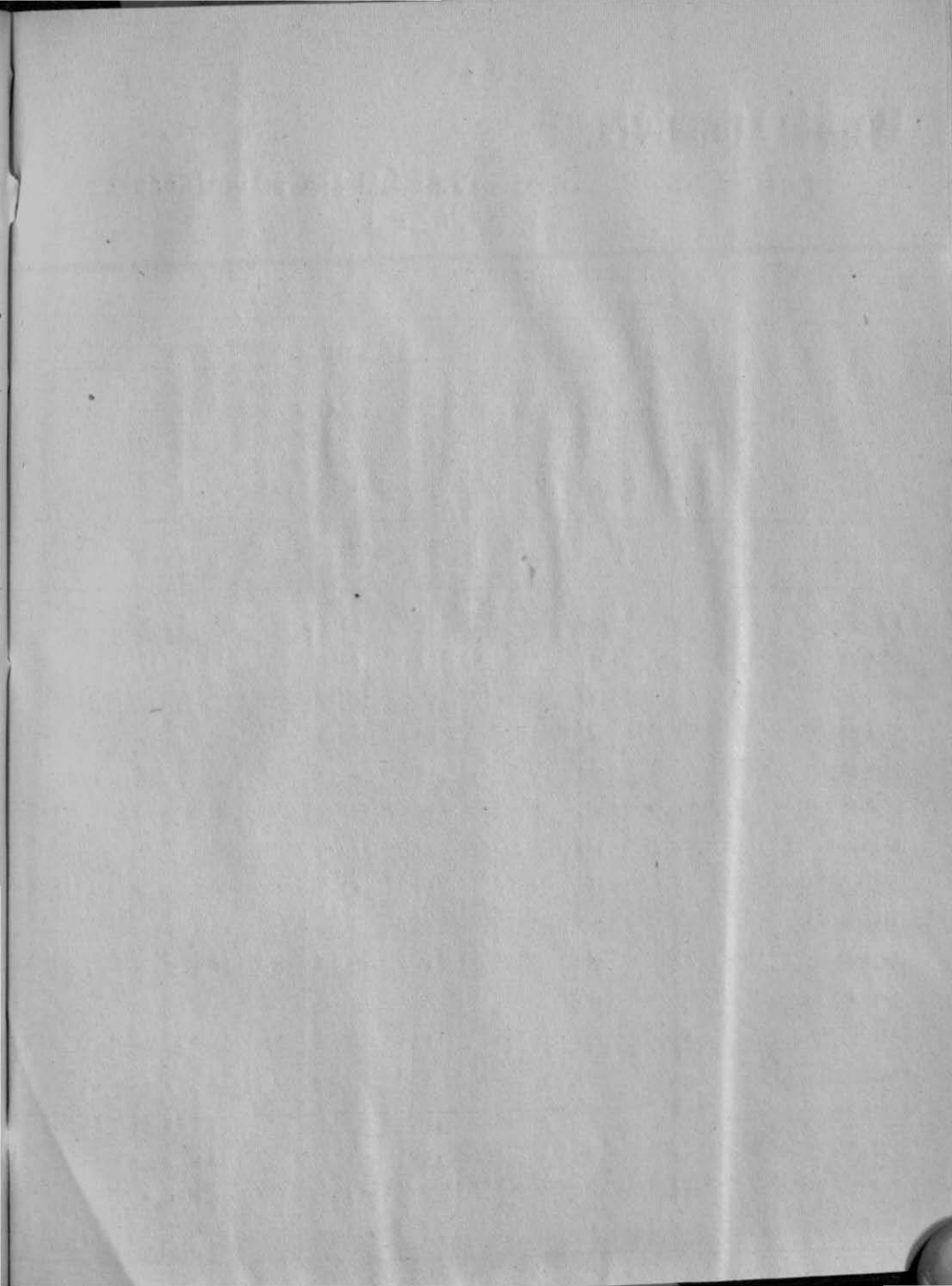
Expenditure.													Year.
of Collection taxes.	Refunds.	Lighting.	Water supply.	Drainage.	Conservancy.	Medical and vaccination.	Market and slaughter houses.	Roads.	Education.	of Repayment loans.	Other expendi- ture.	Total expendi- ture.	
15	16	17	18	19	20	21	22	23	24	25	26	27	28
Rs.	Rs.	Rs.	Rs.	Rs.	Rs.	Rs.	Rs.	Rs.	Rs.	Rs.	Rs.	Rs.	
...	...	...	...	60	420	...	...	93	...	...	689	1,517	1914-15
...	...	...	354	148	1,627	...	...	365	...	...	919	4,062	1915-16
...	...	...	176	1,437	1,701	...	...	837	...	...	677	5,509	1916-17
...	...	292	48	998	1,805	27	...	689	...	...	1,784	6,317	1917-18
...	...	123	111	448	2,550	35	...	474	...	...	1,053	5,606	1918-19
...	...	148	5	28	2,469	95	...	174	...	...	3,494	7,315	1919-20
...	...	173	25	360	2,383	191	...	387	...	...	2,005	6,460	1920-21
...	...	194	80	93	2,620	191	...	75	...	...	1,607	5,885	1921-22
...	...	196	156	34	2,478	241	...	193	...	...	1,192	5,625	1922-23
...	...	248	338	71	2,631	294	...	293	...	...	711	6,055	1923-24
...	...	225	472	40	2,893	299	...	494	...	...	476	6,555	1924-25
891	...	293	465	335	2,165	619	24	489	...	...	405	6,643	1925-26

## Betul District.

TABLE No. 25.—Education.—Literary (with figures of Religion).

(This Table has been compiled from Census Table VIII.)

Religion.	Population.			Literate.			Percentage of Literate on Total Population.		
	Persons.	Male.	Female.	Persons.	Male.	Female.	Persons.	Male.	Female.
I	2	3	4	5	6	7	8	9	10
Hindu ...	219,407	108,818	110,389	9,039	8,500	539	4'12	7'81	'49
Animist ...	135,871	66,421	69,450	314	288	26	'23	'43	'04
Musalman ...	6,451	3,363	3,088	1,279	1,110	169	19'83	33'00	5'47
Christian ..	538	277	261	262	151	111	48'70	54'51	42'53
Jain ...	1,378	660	718	375	344	31	27'21	52'12	4'32
Others ...	92	52	40	31	16	5	32'83	30'77	12'5
Total ...	363,737	179,591	184,146	11,290	10,409	881	3'10	5'80	'48



## Betul District.

TABLE No. 26.—Education—

(This Table has been compiled from information supplied

Year.	Secondary Education.			Primary Education.			Expendi-		
	Schools and Col- leges.	Scholars.		Schools.	Scholars.		Provincial funds.	Local funds.	
		Average daily attend- ance.			Average daily attend- ance.				
		Male.	Female.		Male.	Female.			
I	2	3	4	5	6	7	8	9	
1891-92	...	4	494	...	61	1,839	25	Rs. 5,690	Rs. 4,102
1892-93	...	4	473	...	68	2,101	22	6,434	3,285
1893-94	...	4	503	...	68	2,229	22	7,839	3,452
1894-95	...	4	538	..	68	2,230	22	7,032	5,763
1895-96	...	4	361	...	67	2,171	23	6,880	4,641
1896-97	...	4	367	...	68	2,032	21	7,874	4,652
1897-98	...	4	352	...	68	1,553	21	8,797	4,755
1898-99	...	4	372	...	68	1,944	24	8,844	4,563
1899-1900	...	4	352	...	59	1,577	22	6,795	5,403
1900-01	...	4	366	...	57	1,058	15	8,904	3,043
1901-02	...	4	377	...	60	1,430	15	6,219	5,965
1902-03	...	4	242	...	63	1,736	11	11,348	5,787
1903-04	...	4	387	...	57	1,864	14	2,184	18,947
1904-05	...	4	396	...	60	...	14	2,341	15,086
1905-06	...	4	434	...	61	2,149	36	2,451	20,606
1906-07	...	4	456	...	61	1,980	56	2,309	29,421
1907-08	...	5	399	...	62	2,026	88	2,240	28,159

## Number of Institutions and Scholars.

by the Inspector of Schools, Nerbudda Circle.)

Income on Education.			Expenditure on.		Percentage of male scholars to male population of school-going age.	Percentage of female scholars to female population of school-going age.	Year.
Fees.	Other sources.	Total.	Primary Education.	Secondary Education.			
10	11	12	13	14	15	16	17
Rs. 1,723	Rs. 1,095	Rs. 2,818	Rs. 7,645	Rs. 4,965	9.6	0.1	1891-92
1,503	1,203	2,706	7,511	4,914	10.5	0.1	1892-93
1,733	290	2,023	8,600	4,714	11.2	0.1	1893-94
1,830	2,435	4,265	12,127	4,933	11.3	0.1	1894-95
1,789	1,482	3,271	9,638	5,154	10.4	0.1	1895-96
1,548	1,465	3,013	11,594	3,945	9.8	0.1	1896-97
1,431	1,417	2,848	12,219	4,181	7.8	0.1	1897-98
1,674	2,738	4,412	13,433	4,386	9.5	0.1	1898-99
1,493	718	2,211	9,987	4,122	7.9	0.1	1899-1900
1,272	486	1,758	9,536	4,169	5.8	0.1	1900-01
1,895	1,087	2,982	10,321	4,844	8.6	0.1	1901-02
1,903	4,364	6,267	12,823	10,579	9.4	0.05	1902-03
856	821	1,677	17,778	5,020	16.15	0.14	1903-04
1,208	1,058	2,266	14,277	5,443	17.60	0.14	1904-05
1,240	948	2,188	20,098	5,156	17.54	0.36	1905-06
1,496	1,035	2,531	28,787	5,464	16.52	0.46	1906-07
1,359	1,092	2,451	28,621	4,229	16.67	0.55	1907-08

## Betul District.

TABLE No. 26.—Education—

(This Table has been compiled from information supplied

Year.	Secondary Education.			Primary Education.			Expendi	
	Schools and colleges.	Scholars.*		Schools.	Scholars.		Provincial funds.	Local funds.
		Average daily attend- ance.			Average daily attend- ance.			
		Male.	Female.		Male.	Female.		
1	2	3	4	5	6	7	8	9
1908-09	6	471	...	62	1,941	77	Rs. 2,469	Rs. 30,490
1909-10	5	560	...	62	2,415	67	2,294	32,634
1910-11	7	791	...	61	2,378	68	2,774	32,656
1911-12	7	709	...	62	2,204	67	2,775	32,369
1912-13	7	681	...	76	2,464	111	3,187	35,959
1913-14	6	656	...	82	2,666	109	31,228	8,298
1914-15	6	689	...	92	3,129	136	5,341	28,743
1915-16	4	536	...	94	3,624	154	1,376	33,899
1916-17	4	544	...	92	3,350	157	6,706	3,419
1918-19	6	589	...	107	2,954	177	51,671	3,054
1919-20	6	805	...	107	4,649	404	63,012	5,380
1920-21	6	1,008	...	108	4,288	503	63,880	6,654
1921-22	10	952	...	110	2,480	262	73,034	4,215
1922-23	6	739	...	106	2,432	271	67,393	4,309
1923-24	9	1,028	...	106	2,330	272	81,069	3,487
1924-25	9	1,045	...	98	2,344	287	80,392	5,270
1925-26	9	1,050	...	98	2,284	284	71,588	10,004



Number of Institutions and Scholars—*concl'd.*

by the Inspector of Schools, Nerbudda Circle.)

Income on education.			Expenditure on		Percentage of male scholars to male population of school-going age.	Percentage of female scholars to female population of school-going age.	Year.
Fees.	Other sources.	Total	Primary Education.	Secondary Education.			
10	11	12	13	14	15	16	17
Rs. 869	Rs. 1,464	Rs. 35,293	Rs. 24,242	Rs. 11,050	21'15	0'55	1908-09
1,008	1,154	37,070	28,430	8,640	17'60	0'52	1909-10
1,259	1,655	38,344	27,717	10,627	20'84	0'50	1910-11
1,228	1,473	37,845	27,513	10,332	14'25	0'50	1911-12
1,248	3,127	43,521	29,822	13,699	13'76	0'73	1912-13
3,843	9,996	53,365	29,579	23,786	16'32	0'80	1913-14
4,897	2,769	41,750	28,148	13,602	18'16	1'05	1914-15
1,815	4,321	41,411	28,336	5,563	18'5	'89	1915-16
2,090	5,296	48,288	42,131	6,157	19'2	1'04	1916-17
1,842	5,099	61,666	51,678	9,988	5'06	3'07	1918-19
1,805	6,219	76,417	63,638	12,779	37'17	3'24	1919-20
1,790	4,269	76,593	63,850	12,743	36'91	3'31	1920-21
6,172	5,433	93,854	55,555	38,299	2'53	'26	1921-22
1,556	6,130	79,388	65,596	13,792	31'26	2'7	1922-23
8,384	4,992	97,932	57,623	40,309	2'66	0'29	1923-24
9,366	3,776	98,804	56,960	41,844	2'72	'36	1924-25
9,340	4,648	95,580	54,128	41,452	2'70	'37	1925-26

## Betul District.

TABLE No. 27.—

(This Table has been taken from Statements B and H

Dispensaries.		Betul Main.		Multai.		Bhainsdehi.	
Number of beds available.		23		6		...	
Year.		Daily average.		Daily average.		Daily average.	
		Indoor patients.	Outdoor patients.	Indoor patients.	Outdoor patients.	Indoor patients	Outdoor patients.
1		2	3	4	5	6	7
1891	...	5	48	2	22	...	54
1892	...	7	53	2	30	...	40
1893	...	8	58	2	33	...	42
1894	...	8	67	2	38	...	72
1895	...	12	70	2	40	...	83
1896	...	13	76	3	41	...	61
1897	...	10	60	2	43	...	52
1898	...	15	63	2	43	..	49
1899	...	14	59	1	45	...	50
1900	...	37	55	9	47	...	41
1901	...	14	62	1	43	...	34
1902	...	14	61	1	41	...	56
1903	...	14	62	2	41	...	...
1904	...	10	42	1	30	...	...
1905	...	13	50	1	29	...	...
1906	...	11	53	2	37	...	...
1907	...	12	52	3	43	...	28
1908	...	18	51	1	43	...	26
1909	...	14	54	2	41	...	21
1910	...	18	59	1	46	...	39
1911	...	12	57	1	48	...	9
1912	...	11	52	1	45	...	10
1913	...	11	55	1	41	...	12
1914	...	1,212	6,060	2	46	...	12
1915	...	8	58	1	47	...	18
1916	...	9	73	1	52	I	38

## Dispensaries.

(Part I) of the Charitable Dispensary Reports.)

Daily average outdoor patients.	Income of Dispensaries.					Year.
	From Government.	Local funds.	Subscription.	Other sources.	Total.	
7-A	8	9	10	11	12	13
	Rs.	Rs.	Rs.	Rs.	Rs.	
...	1,015	1,294	1,840	...	3,807	1891
...	1,007	1,360	1,018	38	3,423	1892
...	740	972	1,370	39	3,121	1893
...	754	2,067	3,132	50	5,993	1894
...	1,250	1,120	5,914	70	8,354	1895
...	1,190	1,189	971	153	3,503	1896
...	1,117	1,850	1,093	274	4,334	1897
...	1,019	1,412	877	364	3,669	1898
...	1,100	1,869	552	212	3,733	1899
...	1,105	1,479	108	1,101	3,884	1900
...	1,444	3,094	983	166	5,687	1901
...	1,784	2,452	746	1,505	6,487	1902
...	1,219	2,010	1,043	134	4,406	1903
...	3,305	1,840	1,177	1,035	7,417	1904
...	2,710	1,840	887	237	5,674	1905
...	1,352	1,840	1,239	105	4,536	1906
...	2,311	2,385	1,075	327	6,098	1907
...	3,816	2,140	1,342	980	8,287	1908
...	2,341	2,349	1,379	896	6,065	1909
...	2,841	2,145	1,798	108	6,892	1910
...	2,847	1,575	1,792	190	6,404	1911
...	5,410	3,950	4,098	1,164	14,622	1912
...	19,276	2,350	2,177	429	24,232	1913
...	19,860	2,650	12,270	529	35,300	1914
...	3,703	2,350	2,725	840	9,618	1915
10	6,035	2,450	3,136	161	11,782	1916

## Betul District.

TABLE No. 27.—

(This Table has been taken from Statements B and H

Dispensaries,	Betul Main.		Multai.		Bhainsdehi.		
Number of beds available.	23		6		...		
Year.	Daily average.		Daily average.		Daily average.		
	Indoor patients.	Outdoor patients.	Indoor patients.	Outdoor patients.	Indoor patients.	Outdoor patients.	
1	2	3	4	5	6	7	
1917	...	9	69	1	50	1	38
1918	...	10	109	2	53	2	56
1919	...	13	75	1	42	1	34
1920	...	8'58	68	1'63	40	61	31
1921	...	8'47	66'79	1'14	36'26	62	30'41
1922	...	13'98	86'95	2'29	36'82	1'05	20'84
1923	...	12'81	76'35	3'28	30'87	1'07	26'66
1924	...	18'03	81'66	1'35	40'39	1'46	15'29
1925	...	14'02	78'84	2'11	30'89	'93	20'98
1926	...	15'03	95'03	2'22	52'34	1'33	27'80

Dispensaries—*concl'd.*

(Part I) of the Charitable Dispensary Reports.)

Atnair.	Income of Dispensaries.					Year.
	Daily average outdoor patients.	From Govern-ment.	From Local Funds.	Subscrip-tion.	Other sources.	
8	9	10	11	12	13	14
	Rs.	Rs.	Rs.	Rs.	Rs.	
28	4,767	1,750	3,696	558	10,771	1971
23	6,879	2,500	2,346	992	12,717	1918
24	7,827	3,610	2,662	406	14,505	1919
34	6,488	3,750	3,039	208	13,485	1920
34'48	7,616	3,544	2,316	892	14,368	1921
15'48	9,481	5,272	2,717	441	17,911	1922
8'61	8,513	4,340	2,231	470	16,554	1923
12'16	6,539	4,252	2,918	1,200	14,909	1924
11'95	8,298	4,762	2,332	656	16,048	1925
11'43	12,416	4,235	8,238	599	25,398	1926

## Betul District.

TABLE No. 28.—Vaccination.

(This Table has been compiled from Statements I and III attached to Vaccination Reports and Statements I and IV attached to Sanitary Reports.)

Year.	Successful Primary Vaccinations.		Per thousand of population (a).	Number of children born less number dying under one year of age.	Proportion of column 2 on column 5.	Successful re-vaccinations.	Year.
	Under one year.	Others.					
1	2	3	4	5	6	7	8
1891-92 ...	9,959	821	33'35	11,330	88	5,923	1891-92
1892-93 ...	9,854	555	32'21	10,562	93	2,152	1892-93
1893-94 ...	8,266	873	28'28	8,864	93	4,787	1893-94
1894-95 ...	8,800	844	29'84	8,807	100	2,108	1894-95
1895-96 ...	8,740	292	27'95	9,500	92	2,955	1895-96
1896-97 ...	7,577	1,471	27'99	8,363	91	1,183	1896-97
1897-98 ...	5,624	480	18'89	5,831	96	1,815	1897-98
1898-99 ...	6,312	1,386	23'82	7,517	84	7,897	1898-99
1899-1900 ...	10,293	581	38'65	11,644	88	908	1899-1900
1900-01 ...	6,463	590	21'82	4,808	134	2,553	1900-01
1901-02 ...	7,252	451	26'99	7,832	93	3,293	1901-02
1902-03 ...	11,464	376	41'49	12,371	93	3,742	1902-03

## Betul District.

TABLE No. 28.—Vaccination—*contd.*

(This Table has been compiled from Statements I and III attached to Vaccination Reports and Statements I and IV attached to Sanitary Reports.)

Year.	Successful Primary Vaccinations.		Per thousand of population: (a)	Number of children born less number dying under one year of age.	Proportion of column 2 on column 5.	Successful re-vaccinations.	Year.
	Under one year.	Others.					
1	2	3	4	5	6	7	8
1903-04	10,535	308	37.99	10,733	98	6,036	1903-04
1904-05	14,895	59	52.40	15,187	98	4,591	1904-05
1905-06	12,382	177	44.01	12,726	97	3,344	1905-06
1906-07	12,305	32	54.71	13,444	91	3,276	1906-07
1907-08	10,735	83	37.91	12,139	88	2,494	1907-08
1908-09	11,055	347	39.63	12,162	90	2,353	1908-09
1909-10	11,135	352	39.93	12,629	88	2,686	1909-10
1910-11	11,559	283	54.02	13,750	84	2,684	1910-11
1911-12	12,756	183	38.02	15,312	83	1,891	1911-12
1912-13	11,704	616	39.04	13,368	88	2,484	1912-13
1913-14	13,893	242	45.14	15,561	89	3,462	1913-14
1914-15	14,618	453	46.55	15,533	94	3,092	1914-15

(a) Calculated on population as found at the Census.



## Betul District.

TABLE No. 28.—Vaccination.—*concl'd.*

(This Table has been compiled from Statements I and III attached to Vaccination Reports and Statements I and IV attached to Sanitary Reports.)

Year.	Successful Primary Vaccinations.		Per thousand of population (a).	Number of children born less number dying under one year of age.	Proportion of column 2 on column 5.	Successful re-vaccinations.	Year.
	Under one year.	Others.					
1	2	3	4	5	6	7	8
1915-16	12,242	238	34.60	12,860	95	3,316	1915-16
1916-17	12,761	124	3,624	13,583	94	1,255	1916-17
1917-18	11,914	270	3,134	13,143	91	1,866	1917-18
1918-19	7,907	467	21.30	7,948	99	786	1918-19
1919-20	6,718	748	19.12	8,869	75	418	1919-20
1920-21	6,857	507	21.17	9,574	71	780	1920-21
1921-22	8,676	1,614	2,756	10,025	86	291	1921-22
1922-23	10,217	1,040	31.92	13,416	76	309	1922-23
1923-24	10,217	1,040	31.92	13,416	76	309	1923-24
1924-25	11,244	963	35.74	13,144	85	747	1924-25
1925-26	8,855	929	27.94	12,572	70	320	1925-26

(a) Calculated on population as found at the Census.

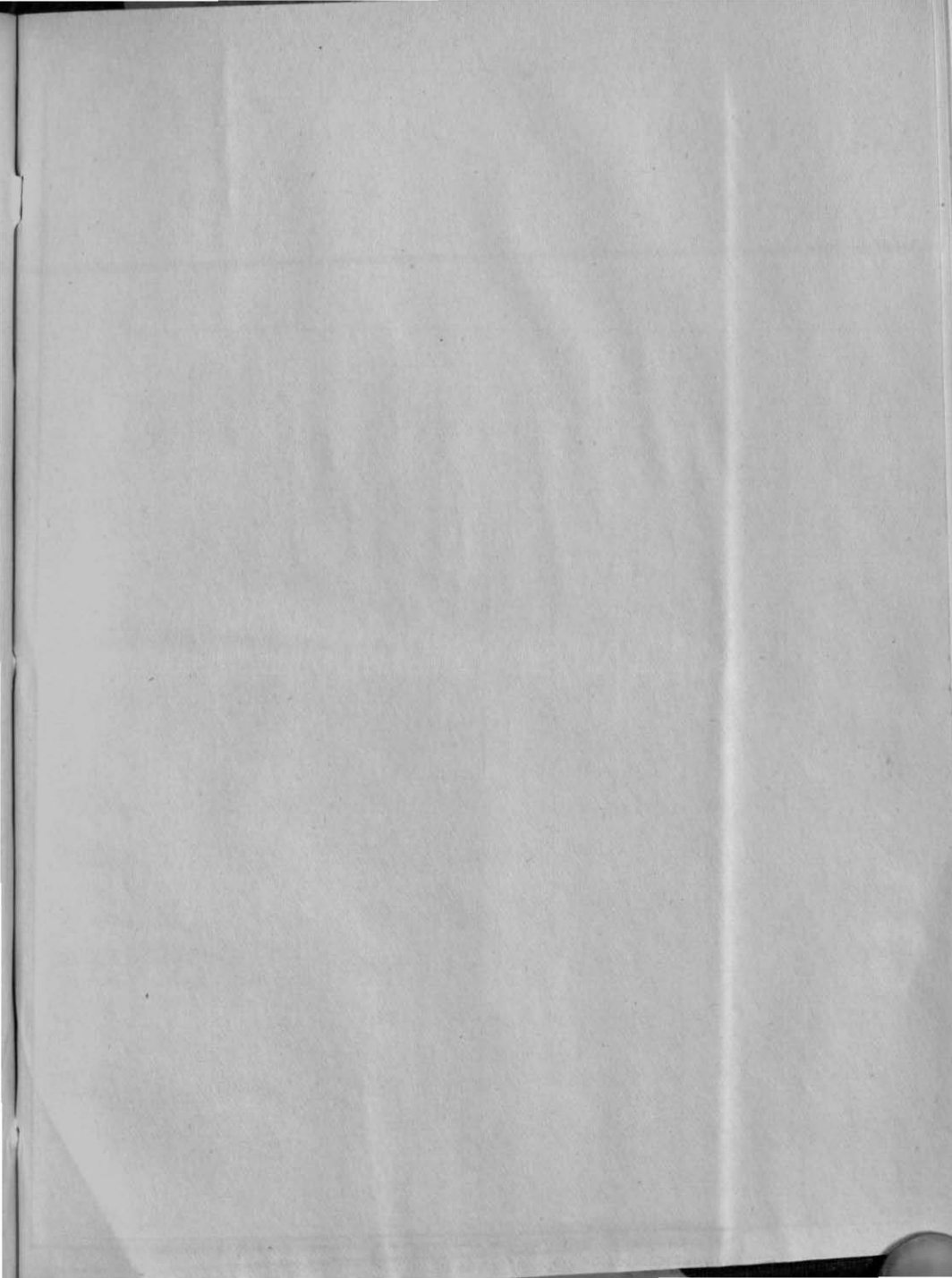


TABLE No. 29.—Polymetrical Table of the Betul District.

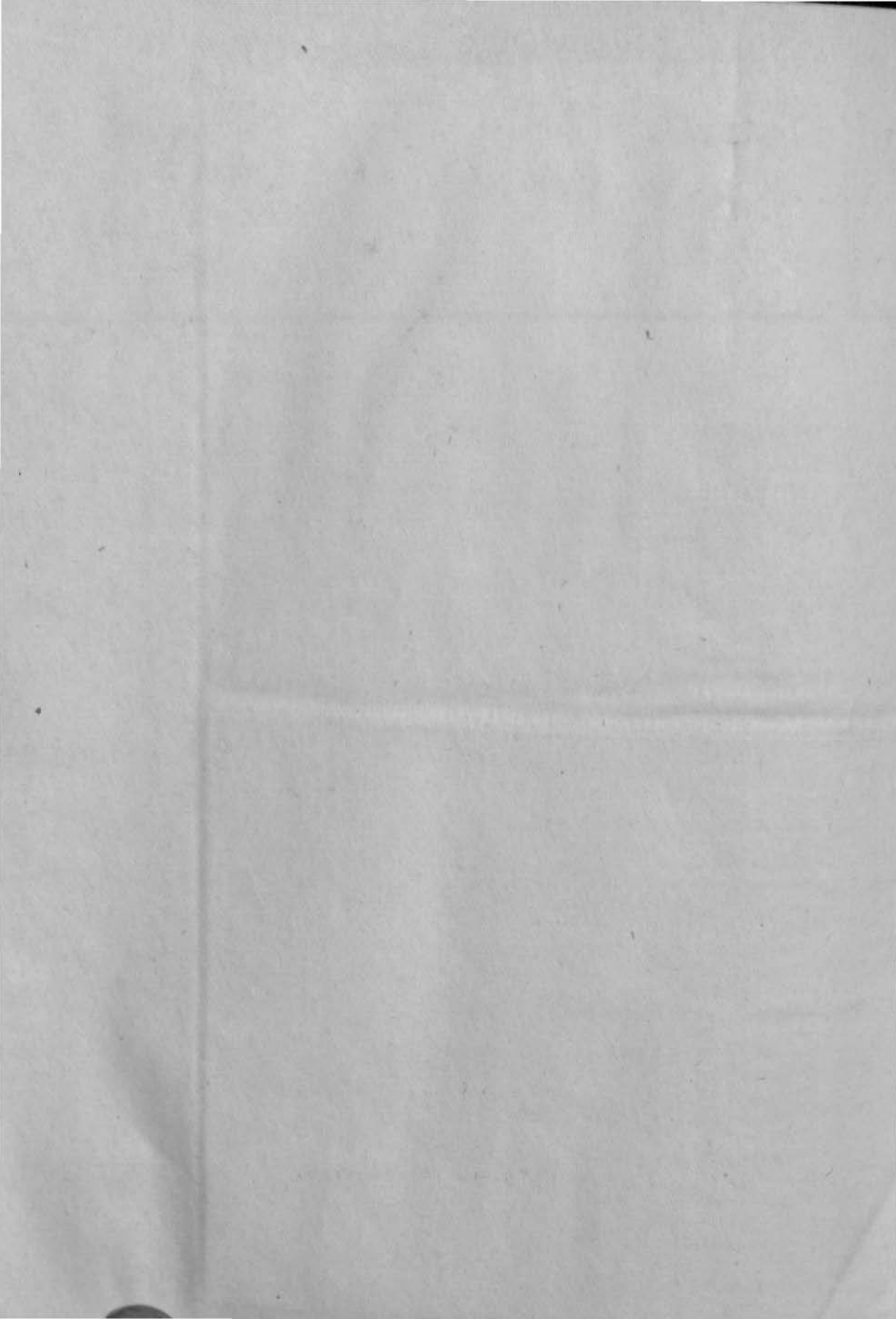
Betul.	Amla Police Station.	Athnair Police Station.	Bhainsdehi Police Station.	Bhaura Inspection hut.	Birul Bazar.	Bisnur village.	Bordehi out-post.	Chandbahra village.	Chichandia out-post.	Chicholi.	Chirapatla out-post.	Dhaba.	Dhar out-post.	Dunawa Inspection. Bugalow.	Gawasen village.	Gudgaon Inspection Bungalow.	Jhallar Inspection Bungalow.	Khedli village.	Khedli Bazar.	Khomai Bazar.	Kolgaon. village.	Kothalkund.	Lakhapur village.	Masod Station house.	Multai Dāk Bungalow.	Nimpani Inspection Bungalow.	Pattan out-post.	Ranipur Police Station.	Sasundra Inspection Bungalow.	Satnair.	Sawalmendha.	Shahpur Dāk Bungalow.			
	M. F.	M. F.	M. F.	M. F.	M. F.	M. F.	M. F.	M. F.	M. F.	M. F.	M. F.	M. F.	M. F.	M. F.	M. F.	M. F.	M. F.	M. F.	M. F.	M. F.	M. F.	M. F.	M. F.	M. F.	M. F.	M. F.	M. F.	M. F.	M. F.	M. F.	M. F.	M. F.			
District	16 1	23 4	31 5	30 4	...	...	32 2	13 0	...	18 4	34 5	48 0	35 6	46 2	44 6	32 2	21 7	8 2	...	50 5	10 2	43 7	9 2	...	29 2	13 1	39 3	14 0	16 1	32 3	38 6	23 4			
Amla	...	...	...	...	...	...	16 1	...	...	...	...	...	...	...	...	...	...	...	...	...	...	...	5 6	...	...	...	...	...	...	...	...	...	...		
Athnair	...	...	21 4	...	23 0	8 3	...	...	...	...	...	...	...	...	...	14 4	...	...	...	...	...	...	...	14 7	30 4	...	...	...	...	...	7 1	...	...		
Bhainsdehi	...	...	...	...	42 5	28 5	...	...	...	...	...	...	...	...	...	...	7 2	10 0	...	...	...	...	...	35 5	51 2	...	...	...	...	...	12 4	...	...		
Bhaura	...	...	...	...	...	...	...	...	...	...	...	...	...	...	...	...	...	...	...	...	...	...	...	...	...	...	...	...	...	...	...	...	...	...	
Birul	...	...	...	...	...	...	...	...	...	...	...	...	...	...	...	...	...	...	...	...	...	...	...	...	10 0	...	...	...	...	...	30 1	...	...		
Bisnur	...	...	...	...	...	...	...	...	...	...	...	...	...	...	...	22 7	...	...	...	...	...	...	...	6 1	22 3	...	...	...	...	...	15 4	...	...		
Bordehi	...	...	...	...	...	...	...	...	...	...	...	...	...	...	...	...	...	...	5 3	...	...	...	...	21 0	...	...	...	...	...	...	...	...	...		
Chandbahra	...	...	...	...	...	...	...	...	...	5 4	19 6	...	...	...	...	31 6	...	...	...	...	...	...	...	...	...	...	...	...	...	...	...	...	...	...	
Chichandia	...	...	...	...	...	...	...	...	...	...	...	...	...	...	...	...	...	...	...	...	...	...	...	...	7 4	...	...	...	...	...	...	...	...		
Chicholi	...	...	...	...	...	...	...	...	...	14 2	...	...	...	...	...	26 2	...	...	...	...	...	...	...	...	...	...	...	...	...	...	...	...	...	...	
Chirapatla	...	...	...	...	...	...	...	...	...	...	...	...	...	...	...	12 0	...	...	...	...	...	...	...	...	...	...	...	...	...	...	...	9 2	...	...	
Dhaba	...	...	...	...	...	...	...	...	...	...	...	...	...	...	...	15 6	26 1	39 6	...	2 5	...	4 1	...	...	...	...	...	...	...	...	...	...	12 4	...	
Dhar	...	...	...	...	...	...	...	...	...	...	...	...	...	...	...	...	...	...	...	...	...	...	...	...	...	21 7	...	...	...	...	...	...	...	...	
Dunawa	...	...	...	...	...	...	...	...	...	...	...	...	...	...	...	...	...	...	...	...	...	...	...	...	17 0	...	...	...	...	...	...	...	...	...	
Gawasen	...	...	...	...	...	...	...	...	...	...	...	...	...	...	...	...	...	...	...	...	...	...	...	...	...	...	...	...	...	...	...	7 3	6 4	...	
Gudgaon	...	...	...	...	...	...	...	...	...	...	...	...	...	...	...	10 3	24 0	...	18 3	...	11 5	...	29 0	45 0	...	...	...	...	...	...	...	...	16 7	...	
Jhallar	...	...	...	...	...	...	...	...	...	...	...	...	...	...	...	...	13 5	...	28 6	...	22 0	...	...	...	...	...	...	...	...	...	...	30 4	...	...	
Khedli	...	...	...	...	...	...	...	...	...	...	...	...	...	...	...	...	...	...	42 3	...	35 5	...	...	...	...	...	...	...	...	...	...	...	...	...	
Khedli	...	...	...	...	...	...	...	...	...	...	...	...	...	...	...	...	...	...	...	...	...	...	...	...	12 0	...	...	...	...	...	...	...	11 7	...	
Khomai	...	...	...	...	...	...	...	...	...	...	...	...	...	...	...	...	...	...	...	...	...	...	...	...	...	...	...	...	...	...	...	...	...	...	
Kolgaon	...	...	...	...	...	...	...	...	...	...	...	...	...	...	...	...	...	...	...	...	...	...	...	...	...	...	...	...	...	...	...	...	...	...	
Kothalkund	...	...	...	...	...	...	...	...	...	...	...	...	...	...	...	...	...	...	...	...	...	...	...	...	...	...	...	...	...	...	...	...	...	5 1	...
Lakhapur	...	...	...	...	...	...	...	...	...	...	...	...	...	...	...	...	...	...	...	...	...	...	...	...	...	...	...	...	...	...	...	...	...	...	...
Masod	...	...	...	...	...	...	...	...	...	...	...	...	...	...	...	...	...	...	...	...	...	...	...	...	...	...	...	...	...	...	...	23 0	...	...	
Multai	...	...	...	...	...	...	...	...	...	...	...	...	...	...	...	...	...	...	...	...	...	...	...	...	...	...	10 1	...	...	...	37 7	...	...	...	
Nimpani	...	...	...	...	...	...	...	...	...	...	...	...	...	...	...	...	...	...	...	...	...	...	...	...	...	...	...	...	3 0	...	...	...	...	9 3	
Pattan	...	...	...	...	...	...	...	...	...	...	...	...	...	...	...	...	...	...	...	...	...	...	...	...	...	...	...	...	...	...	...	...	...	...	...
Ranipur	...	...	...	...	...	...	...	...	...	...	...	...	...	...	...	...	...	...	...	...	...	...	...	...	...	...	...	...	...	...	...	...	...	...	...
Sasundra	...	...	...	...	...	...	...	...	...	...	...	...	...	...	...	...	...	...	...	...	...	...	...	...	...	...	...	...	...	...	...	...	...	...	...
Satnair	...	...	...	...	...	...	...	...	...	...	...	...	...	...	...	...	...	...	...	...	...	...	...	...	...	...	...	...	...	...	...	...	...	...	...
Sawalmendha	...	...	...	...	...	...	...	...	...	...	...	...	...	...	...	...	...	...	...	...	...	...	...	...	...	...	...	...	...	...	...	...	...	...	...
Shahpur	...	...	...	...	...	...	...	...	...	...	...	...	...	...	...	...	...	...	...	...	...	...	...	...	...	...	...	...	...	...	...	...	...	...	...

N. B.—Betul to Chicholi via Kheri  
Betul to Chirapatla via Harda road

M. F.

... 22 4  
... 38 3

P. DAVIES,  
Under Secretary to the Chief Commissioner,  
Central Provinces.



## Betul District.

TABLE NO. 30.—Local Weights and Measures.

*Grain measures—*

One paili	...	...	...	=	90 tolas in the dist. = 100 tolas in Betul and Betul Bazar town.
„ koro	...	...	...	=	8 pailis or 9 seers.
„ mani	...	...	...	=	24 kuros = 216 seers or 5 mds. 16 seers.
„ khandi	...	...	...	=	20 kuros = 180 seers or 4 mds. 20 seers.

*Miscellaneous—*

One "Bigha" is equal to one Acre.

One Khandi of land means five acres or half of land from 10 to 13 acres.

For juari and tilli, the term "awar" is used.

This means as much as a man can plough from morning to night with a plough of two Bullocks.

One pirana	...	...	...	=	4½ cubits (in length).
„ harai	...	...	...	=	1½ piranas (broad) and as long as the field.
„ awar	...	...	...	=	8 harais, it is equivalent to 1 to 1½ acres.



