

F48  
E18



**ANNUAL REPORT**  
ON THE  
**CONSUMPTION OF STATIONERY**  
**IN THE PUNJAB**

37

E18

*For the Year 1915-16.*

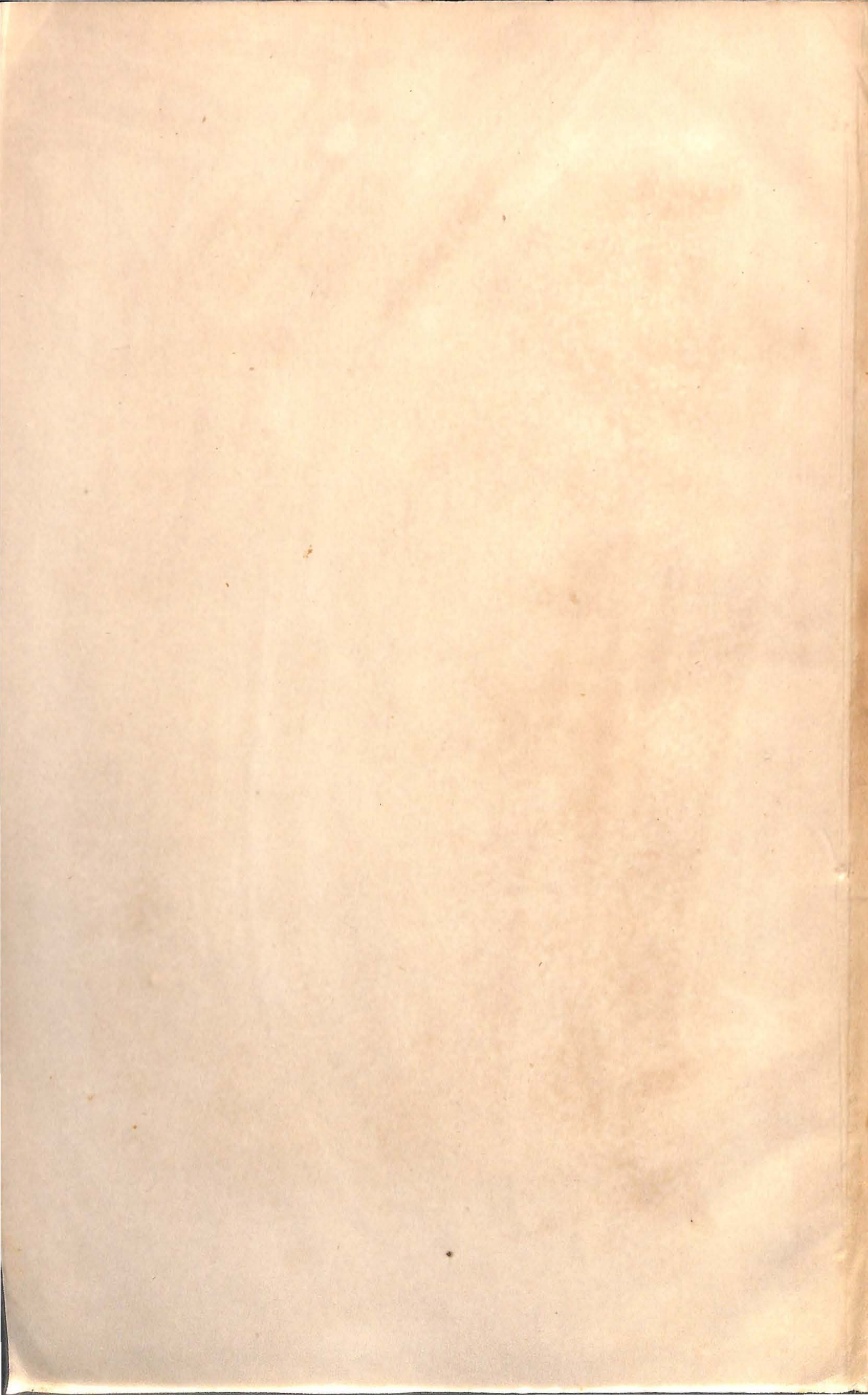
11544

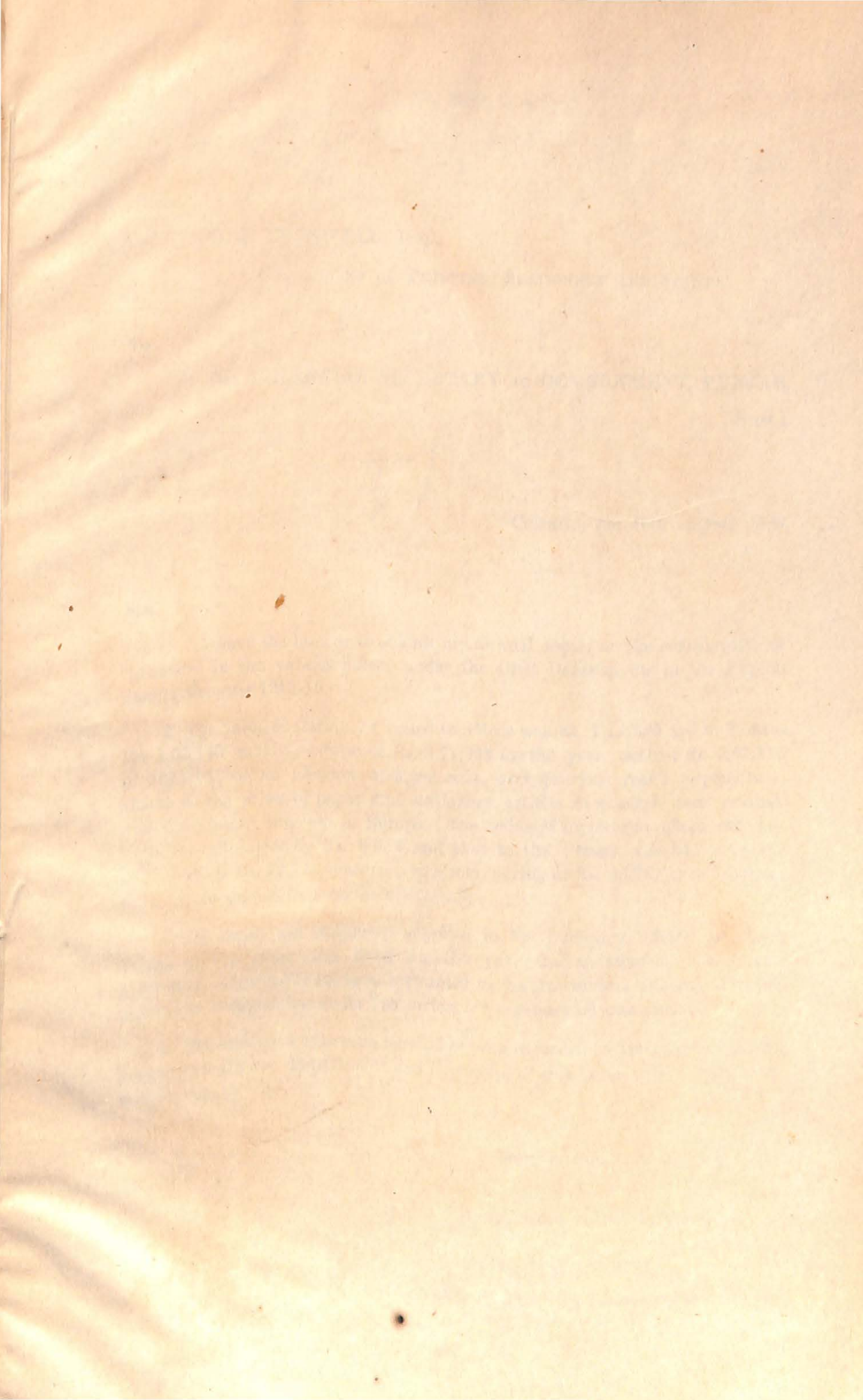


**WEST PAKISTAN CIVIL SECRETARIAT**  
**LIBRARY COPY**  
(To be returned to the Library when done with)

E-18  
15-16

CALCUTTA  
SUPERINTENDENT GOVERNMENT PRINTING, INDIA  
1916







FROM

M. J. COGSWELL, Esq.,

CONTROLLER OF PRINTING, STATIONERY AND STAMPS,

TO

THE FINANCIAL SECRETARY TO GOVERNMENT, PUNJAB,

SIMLA.

37

*Calcutta, the 17th August 1916.*

SIR,

I have the honour to submit my annual report on the consumption of stationery in the various offices under the Civil Departments in the Punjab during the year 1915-16.

2. The value of stationery issued to offices was Rs. 1,14,249 and to Presses Rs. 1,57,146 making a total of Rs. 2,71,395 for the year, against Rs. 2,61,110 in 1914-15; or an advance of 4 per cent. over previous year's expenditure, although the prices of paper and stationery articles in general were normal, notwithstanding the war in Europe. The value of supplies to offices was less than the allotment by Rs. 8,656 and that to the Presses was less than the allotment by Rs. 17,711, resulting in a total saving of Rs. 26,367 or about 9 per cent. in the aggregate, over the allotments.

3. As usual, the stationery supplied to the indenting officers has been valued at the issue rates fixed for the year; and a statement of claims on account of the supplies has been forwarded to the Accountant General, Punjab, and to the Comptroller, India Treasuries, for necessary adjustment.

4. The statement appended hereto has been amended in accordance with the suggestions of your Department and its receipt at this time will, I trust, make it of service to you.

I have the honour to be,

SIR,

Your most obedient Servant,

M. J. COGSWELL,

*Controller of Printing, Stationery and Stamps.*



## STATEMENT

Showing the allotment and value of Stationery supplied to the officers under the Government of the Punjab during the year 1915-16.

| Officers supplied.         | Station.              | Allotments for the year 1915-16. | Value of Stationery supplied in 1915-16 | Value of Stationery supplied in 1914-15. | Value of Stationery supplied in 1913-14. | REMARKS.  |
|----------------------------|-----------------------|----------------------------------|---|--|--|---|
| 1                          | 2                     | 3                                | 4                                       | 5  | 6  | 7   |
|                            |                       | Rs.                              | Rs.                                     | Rs.                                      | Rs.                                      |   |
| <b>Land Revenue.</b>       |                       |                                  |   |  |  |   |
| <i>Ambala Division.</i>    |                       |                                  |   |  |  |   |
| Deputy Commissioner . . .  | Ambala . . .          | 350                              | 345                                     | 375                                      | 353                                      |   |
| Ditto . . .                | Gurgaon . . .         | 300                              | 308                                     | 245                                      | 205                                      |   |
| Ditto . . .                | Hissar . . .          | 350                              | 327                                     | 303                                      | 361                                      |   |
| Ditto . . .                | Karnal . . .          | 325                              | 307                                     | 387                                      | 414                                      |   |
| Ditto . . .                | Rohtak . . .          | 300                              | 352                                     | 330                                      | 309                                      | Excess met from the extra grant mentioned below.                                  |
| Ditto . . .                | Simla . . .           | 400                              | 389                                     | 352                                      | 324                                      |   |
| Settlement Officer . . .   | Ambala . . .          | ...                              | 120                                     | ...                                      | ...                                      | Met from the additional grant of Rs. 442 placed with the Divisional Commissioner. |
| <i>Jullundur Division.</i> |                       |                                  |   |  |  |   |
| Deputy Commissioner . . .  | Ferozepore . . .      | 375                              | 384                                     | 364                                      | 376                                      |   |
| Ditto . . .                | Hoshiarpur . . .      | 225                              | 214                                     | 224                                      | 226                                      |   |
| Ditto . . .                | Jullundur . . .       | 250                              | 251                                     | 247                                      | 237                                      |   |
| Ditto . . .                | Kangra . . .          | 300                              | 305                                     | 303                                      | 347                                      |   |
| Ditto . . .                | Ludhiana . . .        | 250                              | 256                                     | 250                                      | 245                                      |   |
| Settlement Officer . . .   | Kangra . . .          | 900                              | 681                                     | 774                                      | ...                                      |   |
| Ditto . . .                | Jullundur . . .       | 1,700                            | 1,561                                   | 1,047                                    | 580                                      |   |
| <i>Lakore Division.</i>    |                       |                                  |   |  |  |   |
| Deputy Commissioner . . .  | Amritsar . . .        | 325                              | 409                                     | 386                                      | 317                                      |   |
| Ditto . . .                | Gujranwala . . .      | 500                              | 481                                     | 499                                      | 333                                      |   |
| Ditto . . .                | Gurdaspur . . .       | 305                              | 320                                     | 291                                      | 268                                      |   |
| Ditto . . .                | Lahore . . .          | 1,000                            | 903                                     | 759                                      | 914                                      |   |
| Ditto . . .                | Sialkot . . .         | 293                              | 299                                     | 266                                      | 257                                      |   |
| Settlement Officer . . .   | Lahore . . .          | 500                              | 201                                     | 608                                      | 2,924                                    |   |
| Ditto . . .                | Sialkot . . .         | 350                              | 307                                     | 907                                      | 980                                      |   |
| <i>Multan Division.</i>    |                       |                                  |   |  |  |   |
| Deputy Commissioner . . .  | Dera Ghazi Khan . . . | 450                              | 456                                     | 438                                      | 445                                      |   |
| Ditto . . .                | Jhang . . .           | 350                              | 343                                     | 279                                      | 289                                      |   |
| Ditto . . .                | Lyallpur . . .        | 550                              | 529                                     | 485                                      | 477                                      |   |
| Ditto . . .                | Montgomery . . .      | 275                              | 275                                     | 246                                      | 282                                      |   |
| Ditto . . .                | Multan . . .          | 526                              | 524                                     | 407                                      | 430                                      |   |
| Ditto . . .                | Muzaffargarh . . .    | 250                              | 239                                     | 217                                      | 254                                      |   |

## STATEMENT—continued.

| Officers supplied.   | Station.                         | Allotments for the year 1915-16. | Value of Stationery supplied in 1915-16. | Value of Stationery supplied in 1914-15. | Value of Stationery supplied in 1913-14. | REMARKS.  |
|--|----------------------------------|----------------------------------|--|--|--|---|
| 1  | 2                                | 3                                | 4  | 5  | 6  | 7   |
| <b>Land Revenue—concl'd.</b>   |                                  |                                  |  |  |  |   |
| <i>Rawalpindi Division.</i>  |                                  |                                  |  |  |  |   |
| Deputy Commissioner . . . . .  | Attock, Campbellpore } . . . . . | 225                              | 226                                      | 228                                      | 227                                      |   |
| Ditto . . . . .  | Gujrat . . . . .                 | 200                              | 182                                      | 169                                      | 151                                      |   |
| Ditto . . . . .  | Jhelum . . . . .                 | 225                              | 230                                      | 205                                      | 216                                      |   |
| Ditto . . . . .  | Mianwali . . . . .               | 275                              | 275                                      | 271                                      | 265                                      |   |
| Ditto . . . . .  | Rawalpindi . . . . .             | 550                              | 543                                      | 512                                      | 524                                      |   |
| Ditto . . . . .  | Shahpur . . . . .                | 300                              | 300                                      | 342                                      | 275                                      |   |
| Settlement Officer . . . . .   | Gujrat . . . . .                 | 100                              | 25                                       | 92                                       | 314                                      |   |
| Ditto . . . . .  | Shahpur . . . . .                | 100                              | 70                                       | 123                                      | 115                                      |   |
| TOTAL . . . . .  | ...                              | 13,674                           | 12,937                                   | 12,931                                   | 14,234                                   |   |
| <b>Forest.</b>   |                                  |                                  |  |  |  |   |
| Conservator of Forests, Punjab . . . . .                                 | Lahore . . . . .                 | 1,225                            | 1,328                                    | 1,017                                    | 1,084                                    | Excess covered by savings within the Department |
| Forest Divisional Officer, Bashahr Division. . . . .                     | Kotgarh . . . . .                | 250                              | 235                                      | 245                                      | 189                                      |   |
| Forest Divisional Officer, Chenab Division. . . . .                      | Wazirabad . . . . .              | 90                               | 88                                       | 83                                       | 63                                       |   |
| Forest Divisional Officer, Jhelum Division. . . . .                      | Jhelum . . . . .                 | 160                              | 124                                      | 124                                      | 118                                      |   |
| Forest Divisional Officer, Kangra Division. . . . .                      | Dharamsala . . . . .             | 200                              | 177                                      | 161                                      | 125                                      |   |
| Forest Divisional Officer, Kulu Division. . . . .                        | Nagar . . . . .                  | 150                              | 136                                      | 137                                      | 99                                       |   |
| Forest Divisional Officer, Lahore Division. . . . .                      | Lahore . . . . .                 | 110                              | 104                                      | 88                                       | 97                                       |   |
| Forest Divisional Officer, Montgomery Division. . . . .                  | Montgomery . . . . .             | 100                              | 87                                       | 80                                       | 64                                       |   |
| Forest Divisional Officer, Multan Division. . . . .                      | Multan . . . . .                 | 100                              | 97                                       | 95                                       | 93                                       |   |
| Forest Divisional Officer, Rawalpindi Division. . . . .                  | Rawalpindi . . . . .             | 230                              | 217                                      | 199                                      | 183                                      |   |
| Forest Divisional Officer, Res'in Division. . . . .                      | Lahore . . . . .                 | 70                               | 43                                       | 48                                       | 65                                       |   |
| Forest Divisional Officer, Simla Division. . . . .                       | Simla . . . . .                  | 90                               | 84                                       | 95                                       | 68                                       |   |
| TOTAL . . . . .  | ...                              | 2,775                            | 2,720                                    | 2,372                                    | 2,248                                    |   |
| <b>General Administration.</b>   |                                  |                                  |  |  |  |   |
| Private Secretary to His Honour the Lieutenant-Governor, Punjab. . . . . | Lahore . . . . .                 | 700                              | 123                                      | 718                                      | 289                                      |   |
| Chief Secretary, Punjab Civil Secretariat. . . . .                       | Do. . . . .                      | 2,500                            | 2,177                                    | 2,207                                    | 1,885                                    |   |



## STATEMENT—continued.

| Officers supplied.  | Station.                     | Allotments for the year 1915-16. | Value of Stationery supplied in 1915-16. | Value of Stationery supplied in 1914-15. | Value of Stationery supplied in 1913-14. | REMARKS.  |
|---|------------------------------|----------------------------------|--|--|--|---|
| 1   | 2                            | 3                                | 4  | 5  | 6  | 7   |
| <b>General Administration—</b>                                  |                              | Rs.                              | Rs.                                      | Rs.                                      | Rs.                                      |   |
| <i>concl'd.</i>   |                              |                                  |  |  |  |   |
| Secretary, Public Works Department, Buildings and Roads Branch. | Lahore . . .                 | 1,300                            | 1,194                                    | 1,819                                    | 937                                      |   |
| Secretary, Public Works Department, Irrigation Branch.          | Do. . . .                    | 4,275                            | 3,626                                    | 2,423                                    | 4,204                                    |   |
| Financial Commissioners, Punjab .                               | Do. . . .                    | 2,670                            | 1,358                                    | 1,250                                    | 1,496                                    |   |
| Commissioner and Superintendent, Ambala Division.               | Ambala . . .                 | 300                              | 279                                      | 326                                      | 304                                      |   |
| Commissioner and Superintendent, Jullundur Division.            | Jullundur . . .              | 250                              | 222                                      | 248                                      | 251                                      |   |
| Commissioner and Superintendent, Lahore Division.               | Lahore . . .                 | 575                              | 527                                      | 533                                      | 403                                      |   |
| Commissioner and Superintendent, Multan Division.               | Multan . . .                 | 500                              | 490                                      | 482                                      | 486                                      |   |
| Commissioner and Superintendent, Rawalpindi Division.           | Rawalpindi . . .             | 250                              | 254                                      | 249                                      | 250                                      |   |
| Accountant-General, Punjab .                                    | Lahore . . .                 | 27,850                           | 27,749                                   | 28,232                                   | 24,039                                   |   |
| Currency Officer . . . . .                                      | Do. . . . .                  | 1,076                            | 1,076                                    | 1,047                                    | 1,078                                    |   |
| Examiner of Local Fund Accounts, Punjab.                        | Do. . . . .                  | 350                              | 332                                      | 342                                      | 291                                      |   |
| <b>TOTAL</b> . . . . .  | ...                          | 42,596                           | 39,407                                   | 39,876                                   | 35,918                                   |   |
| <b>Law and Justice.</b>   |                              |                                  |  |  |  |   |
| Registrar, Chief Court, Punjab .                                | Lahore . . .                 | 4,000                            | 2,560                                    | 3,213                                    | 3,010                                    |   |
| District and Sessions Judge . .                                 | Ambala . . .                 | 120                              | 119                                      | 117                                      | 106                                      |   |
| Ditto . . . . .   | Amritsar . . .               | 100                              | 112                                      | 64                                       | 58                                       | Excess debited to Chief Court's allotment.          |
| Ditto . . . . .   | Attock, Campbellpore } . . . | 100                              | 117                                      | 186                                      | 163                                      | Ditto.  |
| Ditto . . . . .   | Dera Ghazi Khan . . .        | 160                              | 161                                      | 128                                      | ...                                      |   |
| Ditto . . . . .   | Ferozepore . . .             | 85                               | 80                                       | 88                                       | 68                                       |   |
| Ditto . . . . .   | Gujranwala . . .             | 250                              | 233                                      | 152                                      | 90                                       |   |
| Ditto . . . . .   | Gurdaspur . . .              | 155                              | 207                                      | 155                                      | ...                                      | Excess met from Chief Court's allotment.            |
| Ditto . . . . .   | Hissar . . . . .             | 120                              | 118                                      | 104                                      | 115                                      |   |
| Ditto . . . . .   | Hoshiarpur . . .             | 100                              | 156                                      | 85                                       | 78                                       | Excess met from Senior Sub-Judge's grant.           |
| Ditto . . . . .   | Jhelum . . . . .             | 165                              | 183                                      | 64                                       | 36                                       | Excess debited to Chief Court's grant.              |
| Ditto . . . . .   | Jullundur . . .              | 100                              | 137                                      | 120                                      | 102                                      | Excess met from Senior Sub-Judge's grant.           |
| Ditto . . . . .   | Karnal . . . . .             | 120                              | 170                                      | 103                                      | ...                                      | Excess met by Senior Sub-Judges, Karnal and Rohtak. |
| Ditto . . . . .   | Lahore . . . . .             | 100                              | 116                                      | 93                                       | 94                                       | Excess met from Senior Sub-Judge's grant.           |
| Ditto . . . . .   | Ludhiana . . .               | 80                               | 110                                      | 63                                       | 75                                       | Excess debited to Chief Court's allotment.          |
| Ditto . . . . .   | Lyalpur . . . . .            | 170                              | 185                                      | 130                                      | ...                                      | Ditto.  |

## STATEMENT—continued.

| Officers supplied.            | Station.                 | Allotments for the year 1915-16. | Value of Stationery supplied in 1915-16. | Value of Stationery supplied in 1914-15. | Value of Stationery supplied in 1913-14. | REMARKS.  |
|-------------------------------|--------------------------|----------------------------------|--|--|--|---|
| 1                             | 2                        | 3                                | 4  | 5  | 6  | 7   |
| <b>Law and Justice—contd.</b> |                          | Rs.                              | Rs.                                      | Rs.                                      | Rs.                                      |   |
| District and Sessions Judge . | Mianwali .               | 100                              | 135                                      | 147                                      | ...                                      | Excess debited to Sr. Sub-Judge's grant.            |
| Ditto .                       | Montgomery, Lahore } .   | 100                              | 118                                      | 96                                       | ...                                      | Do.   |
| Ditto .                       | Multan .                 | 100                              | 107                                      | 95                                       | 137                                      |   |
| Ditto .                       | Rawalpindi .             | 150                              | 150                                      | 146                                      | 129                                      |   |
| Ditto .                       | Shahpur, Sargodha } .    | 130                              | 184                                      | 130                                      | 118                                      | Do.   |
| Ditto .                       | Sialkot .                | 125                              | 190                                      | 129                                      | 118                                      | Do.   |
| Senior Sub-Judge .            | Ambala .                 | 45                               | 43                                       | 42                                       | 32                                       |   |
| Ditto .                       | Amritsar .               | 55                               | 46                                       | 54                                       | 51                                       |   |
| Ditto .                       | Attock, Campbellpore } . | 35                               | 20                                       | 34                                       | 32                                       |   |
| Ditto .                       | Ferozepur .              | 50                               | 50                                       | 48                                       | 45                                       |   |
| Ditto .                       | Gujrat .                 | 50                               | 21                                       | 47                                       | 44                                       |   |
| Ditto .                       | Gujranwala .             | 60                               | 30                                       | 57                                       | 31                                       |   |
| Ditto .                       | Gurdaspur .              | 30                               | 27                                       | 59                                       | 46                                       |   |
| Ditto .                       | Gurgaon .                | 20                               | 20                                       | 18                                       | 18                                       |   |
| Ditto .                       | Hissar .                 | 30                               | 30                                       | 30                                       | 28                                       |   |
| Ditto .                       | Hoshiarpur .             | 130                              | 31                                       | 104                                      | 91                                       |   |
| Ditto .                       | Jhang .                  | 120                              | 112                                      | 95                                       | 98                                       |   |
| Ditto .                       | Jhelum .                 | 30                               | 29                                       | 30                                       | 42                                       |   |
| Ditto .                       | Jullundur .              | 60                               | 23                                       | 47                                       | 64                                       |   |
| Ditto .                       | Kangra, Dharamsala } .   | 65                               | 64                                       | 38                                       | 40                                       |   |
| Ditto .                       | Karnal .                 | 30                               | 15                                       | 22                                       | 30                                       |   |
| Ditto .                       | Lahore .                 | 75                               | 37                                       | 55                                       | 65                                       |   |
| Ditto .                       | Ludhiana .               | 60                               | 56                                       | 53                                       | 55                                       |   |
| Ditto .                       | Lyalpur .                | 30                               | 27                                       | 47                                       | 47                                       |   |
| Ditto .                       | Mianwali .               | 40                               | 21                                       | 39                                       | 39                                       |   |
| Ditto .                       | Montgomery .             | 40                               | 27                                       | 39                                       | 35                                       |   |
| Ditto .                       | Multan .                 | 100                              | 95                                       | 91                                       | 84                                       |   |
| Ditto .                       | Muzaffargarh .           | 60                               | 59                                       | 38                                       | 42                                       |   |
| Ditto .                       | Rawalpindi .             | 50                               | 52                                       | 48                                       | 46                                       |   |
| Ditto .                       | Rohtak .                 | 85                               | 52                                       | 81                                       | 73                                       |   |
| Ditto .                       | Shahpur .                | 90                               | 37                                       | 83                                       | 78                                       |   |
| Ditto .                       | Sialkot .                | 50                               | ...                                      | 46                                       | 51                                       | Expenditure included in that of the District Judge. |
| Additional Judge .            | Lahore .                 | ...                              | 79                                       | ...                                      | ...                                      | Met from Chief Court's allotment.                   |
| Judge, Small Cause Court .    | Amritsar .               | 50                               | 46                                       | 42                                       | 38                                       |   |
| Ditto .                       | Lahore .                 | 30                               | 27                                       | 25                                       | 29                                       |   |
| Ditto .                       | Simla .                  | 50                               | 51                                       | ...                                      | ...                                      |   |

## STATEMENT—continued.

| Officers supplied.   | Station.                  | Allotments for the year 1915-16. | Value of Stationery supplied in 1915-16. | Value of Stationery supplied in 1914-15. | Value of Stationery supplied in 1913-14. | REMARKS.   |
|--|---------------------------|----------------------------------|--|--|--|--|
| 1  | 2                         | 3                                | 4  | 5  | 6  | 7  |
| <b>Law and Justice—concl'd.</b>  |                           |                                  |  |  |  |  |
| Legal Remembrancer . . . . .   | Lahore . . . . .          | 250                              | 230                                      | 417                                      | 141                                      |  |
| President, Special Tribunal (Court of Special Commissioners appointed under the Defence of India Act of 1915). | Multan . . . . .          | 38                               | 37                                       | ...                                      | ...                                      | New office.  |
| TOTAL . . . . .  | ...                       | 8,538                            | 7,142                                    | 7,435                                    | 6,012                                    |  |
| <b>Jails.</b>  |                           |                                  |  |  |  |  |
| Inspector-General of Prisons, Punjab.  | Lahore . . . . .          | 122                              | 154                                      | 164                                      | 151                                      | Excess met from his allotment for printing paper, etc. |
| Superintendent of Jail . . . . .   | Ambala . . . . .          | 24                               | 23                                       | 27                                       | 23                                       |  |
| Ditto . . . . .  | Campbellpore . . . . .    | 9                                | 9  | 7  | 8  |  |
| Ditto . . . . .  | Dera Ghazi Khan . . . . . | 15                               | 15                                       | 12                                       | 14                                       |  |
| Ditto . . . . .  | Ferozepore . . . . .      | 24                               | 23                                       | 13                                       | 12                                       |  |
| Ditto . . . . .  | Gujranwala . . . . .      | 13                               | 11                                       | 12                                       | 13                                       |  |
| Ditto . . . . .  | Gardaspur . . . . .       | 8                                | 7  | 10                                       | 11                                       |  |
| Ditto . . . . .  | Hissar . . . . .          | 10                               | 8  | 11                                       | 11                                       |  |
| Ditto . . . . .  | Jhang . . . . .           | 12                               | 15                                       | 7  | ...                                      |  |
| Ditto . . . . .  | Jhelum . . . . .          | 14                               | 14                                       | 12                                       | 12                                       |  |
| Ditto . . . . .  | Jullundur . . . . .       | 12                               | 11                                       | 12                                       | 11                                       |  |
| Superintendent, Borstal Central Jail.  | Lahore . . . . .          | 75                               | 77                                       | 74                                       | 49                                       |  |
| Superintendent, Central Jail . . . . .   | Do. . . . .               | 64                               | 25                                       | 19                                       | 22                                       |  |
| Ditto Female Jail . . . . .  | Do. . . . .               | 5                                | 5  | 5  | 4  |  |
| Superintendent of Jail . . . . .   | Ludhiana . . . . .        | 10                               | 9  | 10                                       | 9  |  |
| Ditto . . . . .  | Lyalpur . . . . .         | 14                               | 12                                       | 13                                       | 12                                       |  |
| Ditto . . . . .  | Mianwali . . . . .        | 8                                | 8  | 10                                       | 9  |  |
| Superintendent, Central Jail . . . . .   | Montgomery . . . . .      | 43                               | 43                                       | 41                                       | 48                                       |  |
| Ditto . . . . .  | Multan . . . . .          | 38                               | 38                                       | 38                                       | 36                                       |  |
| Superintendent of District Jail . . . . .  | Do. . . . .               | 16                               | 15                                       | 15                                       | 20                                       |  |
| Ditto . . . . .  | Rawalpindi . . . . .      | 28                               | 27                                       | 23                                       | 18                                       |  |
| Ditto . . . . .  | Rohtak . . . . .          | 9                                | 8  | 14                                       | ...                                      |  |
| Ditto . . . . .  | Shahpur . . . . .         | 12                               | 10                                       | 9  | 10                                       |  |
| Ditto . . . . .  | Sialkot . . . . .         | 15                               | 14                                       | 11                                       | 11                                       |  |
| TOTAL . . . . .  | ...                       | 600                              | 581                                      | 569                                      | 514                                      |  |
| <b>Police.</b>   |                           |                                  |  |  |  |  |
| Inspector-General of Police, Punjab  | Lahore . . . . .          | 950                              | 570                                      | 2,375                                    | 426                                      |  |
| Deputy Inspector-General of Police, Central Range.   | Do. . . . .               | 150                              | 156                                      | 165                                      | 172                                      |  |

## STATEMENT—continued.

| Officers supplied.   | Station.                   | Allotments for the year 1915-16. | Value of Stationery supplied in 1915-16. | Value of Stationery supplied in 1914-15. | Value of Stationery supplied in 1913-14. | REMARKS.                                |
|--|----------------------------|----------------------------------|--|--|--|---|
| 1  | 2                          | 3                                | 4  | 5  | 6  | 7                                       |
| <b>Police—concl'd.</b>   |                            | Rs.                              | Rs.                                      | Rs.                                      | Rs.                                      |   |
| Deputy Inspector-General of Police Western Range.                | Rawalpindi .               | 150                              | 147                                      | 157                                      | 154                                      |   |
| Ditto Eastern Range .  | Ambala . .                 | 150                              | 152                                      | 192                                      | 181                                      |   |
| Ditto in charge, Railways and Criminal Investigation Department. | Lahore . .                 | 1,400                            | 1,394                                    | 203                                      | 247                                      |   |
| Superintendent of Police . .                                     | Ambala . .                 | 130                              | 131                                      | 149                                      | 144                                      |   |
| Ditto . .  | Amritsar . .               | 150                              | 151                                      | 181                                      | 168                                      |   |
| Ditto . .  | Attock, Campbellpore } . . | 100                              | 101                                      | 85                                       | 114                                      |   |
| Ditto . .  | Dera Ghazi Khan . .        | 100                              | 101                                      | 89                                       | 120                                      |   |
| Ditto . .  | Ferozepore . .             | 150                              | 151                                      | 158                                      | 170                                      |   |
| Ditto . .  | Gujrat . . . .             | 95                               | 93                                       | 78                                       | 73                                       |   |
| Ditto . .  | Gujranwala . .             | 85                               | 82                                       | 91                                       | 57                                       |   |
| Ditto . .  | Gurgaon . . . .            | 100                              | 97                                       | 85                                       | 87                                       |   |
| Ditto . .  | Gurdaspur . .              | 155                              | 158                                      | 154                                      | 170                                      |   |
| Ditto . .  | Hissar . . . .             | 100                              | 94                                       | 87                                       | 81                                       |   |
| Ditto . .  | Hoshiarpur . .             | 100                              | 102                                      | 83                                       | 77                                       |   |
| Ditto . .  | Jhang . . . .              | 100                              | 94                                       | 72                                       | 69                                       |   |
| Ditto . .  | Jhelum . . . .             | 100                              | 88                                       | 94                                       | 118                                      |   |
| Ditto . .  | Jullundur . .              | 100                              | 114                                      | 81                                       | 81                                       | Excess covered by Departmental savings. |
| Ditto . .  | Kangra . . . .             | 90                               | 89                                       | 76                                       | 90                                       |   |
| Ditto . .  | Karnal . . . .             | 150                              | 144                                      | 171                                      | 191                                      |   |
| Ditto . .  | Lahore . . . .             | 290                              | 322                                      | 255                                      | 251                                      | Do.                                     |
| Superintendent, Government Railway Police, Northern District.    | Do. . . .                  | 140                              | 141                                      | 188                                      | 132                                      |   |
| Ditto Government Railway Police, Southern District.              | Do. . . .                  | 140                              | 138                                      | 149                                      | 161                                      |   |
| Superintendent of Police . .                                     | Ludhiana . .               | 100                              | 126                                      | 117                                      | 79                                       | Do.                                     |
| Ditto . .  | Lyalpur . . . .            | 175                              | 174                                      | 98                                       | 105                                      |   |
| Ditto . .  | Mianwali . . . .           | 90                               | 89                                       | 106                                      | 97                                       |   |
| Ditto . .  | Montgomery . .             | 100                              | 97                                       | 84                                       | 103                                      |   |
| Ditto . .  | Multan . . . .             | 130                              | 134                                      | 102                                      | 140                                      |   |
| Ditto . .  | Muzaffargarh . .           | 100                              | 104                                      | 100                                      | 99                                       |   |
| Ditto . . in charge  | Phillour . . . .           | 150                              | 228                                      | 120                                      | 92                                       | Do.                                     |
| Ditto . . in charge  | Do. . . .                  | 150                              | 140                                      | 150                                      | 217                                      |   |
| Ditto . . . .  | Rawalpindi . .             | 180                              | 172                                      | 155                                      | 121                                      |   |
| Ditto . . . .  | Rohtak . . . .             | 100                              | 91                                       | 84                                       | 68                                       |   |
| Ditto . . . .  | Shahpur . . . .            | 100                              | 107                                      | 133                                      | 157                                      |   |
| Ditto . . . .  | Sialkot . . . .            | 150                              | 169                                      | 177                                      | 190                                      |   |
| Ditto . . . .  | Simla . . . .              | 100                              | 105                                      | 83                                       | 36                                       |   |
| TOTAL . . . .  | ...                        | 6,800                            | 6,546                                    | 6,927                                    | 5,038                                    |   |

## STATEMENT—continued.

| Officers supplied.                                | Station.                  | Allotments for the year 1915-16. | Value of Stationery supplied in 1915-16. | Value of Stationery supplied in 1914-15. | Value of Stationery supplied in 1913-14. | REMARKS. |
|---|---------------------------|----------------------------------|--|--|--|----------|
| 1   | 2                         | 3                                | 4  | 5  | 6  | 7        |
| <b>Education.</b>                                 |                           | Rs.                              | Rs.                                      | Rs.                                      | Rs.                                      |          |
| Director of Public Instruction, Punjab.           | Lahore . . .              | 2,500                            | 2,161                                    | 2,374                                    | 1,455                                    |          |
| Head Master, High English School                  | Ambala . . .              | 30                               | 29                                       | 32                                       | 35                                       |          |
| Ditto ditto                                       | Amritsar . . .            | 35                               | 35                                       | 36                                       | 31                                       |          |
| Ditto Clerical and Commercial School.             | Do. . . .                 | 40                               | 37                                       | 30                                       | 23                                       |          |
| Ditto High English School, Shahpur.               | Bhera . . .               | 30                               | 27                                       | 40                                       | 44                                       |          |
| Ditto High English School                         | Campbellpore . . .        | 30                               | 28                                       | 30                                       | 45                                       |          |
| Ditto ditto                                       | Delhi . . .               | 30                               | 23                                       | 22                                       | 40                                       |          |
| Ditto Normal School                               | Do. . . .                 | 30                               | 31                                       | 28                                       | 33                                       |          |
| Ditto High English School                         | Dera Ghazi Khan           | 25                               | 16                                       | 29                                       | 37                                       |          |
| Ditto ditto                                       | Dharamsala . . .          | 25                               | 19                                       | ...                                      | ...                                      |          |
| Ditto ditto                                       | Ferozepore . . .          | 35                               | 38                                       | 34                                       | 42                                       |          |
| Ditto ditto                                       | Gujrat . . .              | 35                               | 34                                       | 30                                       | 45                                       |          |
| Ditto ditto                                       | Gujranwala . . .          | 30                               | 25                                       | 35                                       | 44                                       |          |
| Ditto ditto                                       | Gurdaspur . . .           | 30                               | 24                                       | 35                                       | 46                                       |          |
| Ditto ditto                                       | Hissar . . .              | 35                               | 30                                       | 31                                       | 42                                       |          |
| Ditto ditto                                       | Hoshiarpur . . .          | 35                               | 33                                       | 34                                       | 30                                       |          |
| Ditto ditto                                       | Jhang . . .               | 30                               | 25                                       | 27                                       | 29                                       |          |
| Ditto ditto                                       | Jhelum . . .              | 40                               | 35                                       | 34                                       | 41                                       |          |
| Ditto ditto                                       | Jullundar . . .           | 35                               | 30                                       | 30                                       | 37                                       |          |
| Ditto Normal School                               | Do. . . .                 | 25                               | 19                                       | 24                                       | 17                                       |          |
| Ditto High English School                         | Karnal . . .              | 35                               | 31                                       | 35                                       | 38                                       |          |
| Ditto Normal School                               | Do. . . .                 | 30                               | 30                                       | 39                                       | ...                                      |          |
| Ditto Central Model School                        | Lahore . . .              | 50                               | 50                                       | 53                                       | 80                                       |          |
| Ditto Normal School                               | Do. . . .                 | 30                               | 31                                       | 26                                       | 17                                       |          |
| Head Mistress Ditto                               | Do. . . .                 | 30                               | 26                                       | 99                                       | 38                                       |          |
| Head Master, Government Railway Technical School. | Do. . . .                 | 65                               | 62                                       | 91                                       | 63                                       |          |
| Ditto High English School                         | Ludhiana . . .            | 35                               | 27                                       | 13                                       | 20                                       |          |
| Ditto ditto                                       | Lyallpur . . .            | 30                               | 31                                       | 22                                       | 27                                       |          |
| Ditto Normal School                               | Do. . . .                 | 30                               | 25                                       | 35                                       | 40                                       |          |
| Ditto High English School                         | Mianwali . . .            | 30                               | 21                                       | 27                                       | 16                                       |          |
| Ditto ditto                                       | Montgomery . . .          | 35                               | 34                                       | 37                                       | 47                                       |          |
| Ditto ditto                                       | Multan . . .              | 40                               | 32                                       | 36                                       | 33                                       |          |
| Ditto Normal School                               | Do. . . .                 | 30                               | 25                                       | 25                                       | 31                                       |          |
| Ditto High English School.                        | Muzaffargarh . . .        | 30                               | 24                                       | 22                                       | 36                                       |          |
| Ditto Srestha Niti High School.                   | Rawalpindi . . .          | 30                               | 29                                       | 35                                       | 37                                       |          |
| Ditto Normal School                               | Do. . . .                 | 25                               | 17                                       | 29                                       | 34                                       |          |
| Ditto High English School                         | Rewari, District Gurgaon. | 30                               | 31                                       | 27                                       | 46                                       |          |
| Ditto ditto                                       | Rohtak . . .              | 35                               | 31                                       | 34                                       | 45                                       |          |

## STATEMENT—continued.

| Officers supplied.                                | Station.         | Allotments for the year 1915-16. | Value of Stationery supplied in 1915-16. | Value of Stationery supplied in 1914-15. | Value of Stationery supplied in 1913-14. | REMARKS.   |
|---|------------------|----------------------------------|--|--|--|--|
| 1   | 2                | 3                                | 4  | 5  | 6  | 7  |
| <b>Education—concl'd.</b>                         |                  | Rs.                              | Rs.                                      | Rs.                                      | Rs.                                      |  |
| Head Master, Normal School                        | Sargodha . . .   | ...                              | 37                                       | ...                                      | ...                                      | Met from Departmental savings.                       |
| Ditto High English School                         | Sialkot . . .    | 30                               | 32                                       | 31                                       | 32                                       |  |
| Ditto ditto . . .                                 | Simla . . .      | 35                               | 34                                       | 35                                       | 45                                       |  |
| Lady Superintendent, Victoria Girls' High School. | Lahore . . .     | 40                               | 33                                       | 42                                       | ...                                      |  |
| Inspector of Schools, Ambala Division.            | Ambala . . .     | 130                              | 125                                      | 118                                      | 122                                      |  |
| Inspector of Schools, Jullundur Division.         | Jullundur . . .  | 135                              | 119                                      | 115                                      | 125                                      |  |
| Inspector of Schools, Lahore Division.            | Lahore . . .     | 120                              | 115                                      | 120                                      | 143                                      |  |
| Inspector of European Schools, Punjab.            | Do. . . .        | 80                               | 76                                       | 84                                       | 50                                       |  |
| Chief Inspectress of Schools, Punjab.             | Do. . . .        | 100                              | 98                                       | 62                                       | 88                                       |  |
| Inspector of Schools, Multan Division.            | Multan . . .     | 120                              | 113                                      | 125                                      | 107                                      |  |
| Inspector of Schools, Rawalpindi Division.        | Rawalpindi . . . | 135                              | 118                                      | 97                                       | 95                                       |  |
| Principal, Lawrence School . . .                  | Ghoragali . . .  | 300                              | 300                                      | 25                                       | 182                                      |  |
| Principal, Mayo School of Art . . .               | Lahore . . .     | 200                              | 237                                      | 256                                      | 267                                      |  |
| Principal, Central Training College               | Do. . . .        | 140                              | 131                                      | 134                                      | 429                                      |  |
| Principal, Queen Mary College for Girls.          | Do. . . .        | 40                               | 40                                       | 41                                       | 50                                       |  |
| Principal, Government College . . .               | Do. . . .        | 120                              | 117                                      | 119                                      | 114                                      |  |
| Principal, Government School of Engineering.      | Rasul . . .      | 300                              | 234                                      | 268                                      | 218                                      |  |
| Superintendent, Reformatory School                | Delhi . . .      | 50                               | 47                                       | 46                                       | 45                                       |  |
| <b>TOTAL</b> . . .                                | ...              | 5,800                            | 5,262                                    | 5,338                                    | 4,876                                    |  |
| <b>Ecclesiastical.</b>                            |                  |                                  |  |  |  |  |
| The Bishop of Lahore . . .                        | Lahore . . .     | 70                               | 63                                       | 46                                       | 38                                       | * Fixed for Presidency Chaplain, Church of Scotland. |
| Archdeacon . . . . .                              | Do. . . . .      | 30                               | 24                                       | 5  | 15                                       |  |
| Chaplain, Church of Scotland                      | Rawalpindi . . . | } 85* {                          | 12                                       | ...                                      | ...                                      |  |
| Ditto ditto . . .                                 | Simla . . . .    |                                  | 5  | 1  | ...                                      |  |
| Deputy Commissioner for Chaplain                  | Ambala . . .     | 26                               | 20                                       | 12                                       | 10                                       |  |
| Ditto ditto . . .                                 | Amritsar . . .   | 5                                | ...                                      | ...                                      | ...                                      |  |
| Ditto ditto . . .                                 | Attock . . .     | 1                                | 1  | 1  | 1  |  |
| Ditto ditto . . .                                 | Gurdaspur . . .  | 10                               | ...                                      | ...                                      | ...                                      |  |
| Ditto ditto . . .                                 | Ferozepur . . .  | 8                                | 8  | 7  | 4  |  |
| Ditto ditto . . .                                 | Gujrat . . .     | 2                                | 2  | 1  | ...                                      |  |
| Ditto ditto . . .                                 | Jhelum . . .     | 5                                | 4  | 5  | 5  |  |
| Ditto ditto . . .                                 | Jullundur . . .  | 15                               | 12                                       | 11                                       | 7  |  |
| Ditto ditto . . .                                 | Karnal . . .     | 5                                | 5  | 3  | 3  |  |
| Ditto ditto . . .                                 | Lahore . . .     | 25                               | 23                                       | 19                                       | 24                                       |  |

## STATEMENT—continued.

| Officers supplied.   | Station.        | Allotments for the year 1915-16. | Value of Stationery supplied in 1915-16. | Value of Stationery supplied in 1914-15. | Value of Stationery supplied in 1913-14. | REMARKS.                                       |
|--|-----------------|----------------------------------|--|--|--|--|
| 1  | 2               | 3                                | 4  | 5  | 6  | 7  |
| <b>Ecclesiastical—concl'd.</b>                               |                 | Rs.                              | Rs.                                      | Rs.                                      | Rs.                                      |  |
| Deputy Commissioner for Chaplain                             | Multan . . .    | 19                               | 19                                       | 17                                       | 10                                       |  |
| Ditto ditto .  | Rawalpindi . .  | 18                               | ...                                      | 18                                       | ...                                      |  |
| Ditto ditto .  | Sialkot . . .   | 10                               | ...                                      | ...                                      | ..                                       |  |
| Ditto ditto .  | Simla . . .     | 30                               | 30                                       | 22                                       | 12                                       |  |
| <b>TOTAL</b> .   | ...             | 364                              | 228                                      | 168                                      | 129                                      |  |
| <b>Medical.</b>  |                 |                                  |  |  |  |  |
| Inspector-General of Civil Hospitals, Punjab.                | Lahore . . .    | 350                              | 270                                      | 412                                      | 342                                      |  |
| Chief Malaria Medical Officer .                              | Do. . . .       | 180                              | 91                                       | 124                                      | 62                                       |  |
| Chemical Examiner, Government of the Punjab.                 | Do. . . .       | 76                               | 70                                       | 69                                       | 76                                       |  |
| Civil Surgeon . . . .  | Ambala . . .    | 10                               | 4  | 8  | 2  |  |
| Ditto . . . .  | Dear Ghazi Khan | 6                                | 5  | 4  | 6  |  |
| Ditto . . . .  | Rawalpindi . .  | 20                               | 17                                       | 12                                       | 17                                       |  |
| Health Officer . . . .                                       | Simla . . .     | 25                               | 23                                       | 22                                       | 28                                       |  |
| Principal, Medical College . .                               | Lahore . . .    | 220                              | 219                                      | 210                                      | 202                                      |  |
| Sanitary Commissioner, Punjab .                              | Do. . . .       | 450                              | 315                                      | 370                                      | 262                                      |  |
| Deputy Sanitary Commissioner, Punjab.                        | Do. . . .       | 250                              | 233                                      | 185                                      | 140                                      |  |
| Additional Deputy Sanitary Commissioner, Punjab.             | Do. . . .       | 100                              | 35                                       | 87                                       | ...                                      |  |
| Superintendent, Plague Equipment Depôt.                      | Jullundur . .   | 15                               | 15                                       | 14                                       | 5  |  |
| Superintendent, Lunatic Asylum .                             | Lahore . . .    | 28                               | 27                                       | 27                                       | 26                                       |  |
| <b>TOTAL</b> .   | ...             | 1,730                            | 1,324                                    | 1,544                                    | 1,166                                    |  |
| <b>Political.</b>  |                 |                                  |  |  |  |  |
| Political Agent, Phulkian States .                           | Patiala . . .   | 522                              | 519                                      | 401                                      | 435                                      |  |
| Political Agent, Bahawalpur, Malerkotla and Faridkot States. | Bahawalpur . .  | 388                              | 362                                      | 87                                       | 411                                      |  |
| <b>TOTAL</b> .   | ...             | 910                              | 881                                      | 488                                      | 846                                      |  |
| <b>Minor.</b>  |                 |                                  |  |  |  |  |
| Director of Agriculture and Industries, Punjab.              | Lahore . . .    | 3,742                            | 2,836                                    | 1,507                                    | 538                                      |  |
| Agricultural Engineer to Government, Punjab.                 | Lyalpur . . .   | 124                              | 251                                      | ...                                      | ...                                      | Excess met from the savings with the Director. |
| Camel Specialist, Punjab . . .                               | Sohawa . . .    | 83                               | 80                                       | 71                                       | 42                                       |  |
| Colonization Officer . . . .                                 | Montgomery . .  | 700                              | 698                                      | 710                                      | 563                                      |  |
| Curator, Central Museum . . .                                | Lahore . . .    | 100                              | 102                                      | 92                                       | 80                                       |  |
| Deputy Director of Agriculture, Punjab.                      | Hansi . . .     | 200                              | 174                                      | 49                                       | ...                                      |  |
| Deputy Director of Agriculture .                             | Gurdaspur . .   | 253                              | 255                                      | 134                                      | 121                                      |  |
| Director of Fisheries, Punjab . .                            | Do. . . .       | ...                              | 73                                       | 101                                      | 208                                      | Met from Financial Commissioners' grant.       |
| Inspector of Factories, Punjab .                             | Lahore . . .    | 28                               | 34                                       | 80                                       | ...                                      |  |

## STATEMENT—continued.

| Officers supplied.   | Station.         | Allotments for the year 1915-16. | Value of Stationery supplied in 1915-16. | Value of Stationery supplied in 1914-15. | Value of Stationery supplied in 1913-14. | REMARKS.                                     |
|--|------------------|----------------------------------|--|--|--|--|
| 1  | 2                | 3                                | 4  | 5  | 6  | 7  |
| <b>Minor—concl'd.</b>  |                  | Rs.                              | Rs.                                      | Rs.                                      | Rs.                                      |  |
| Principal, Agricultural College, Punjab.   | Lyallpur . . .   | 370                              | 381                                      | 340                                      | 101                                      | Excess met from savings with the Director.   |
| Professor of Agriculture, Agricultural station.  | Do. . . .        | 60                               | 60                                       | 56                                       | 74                                       |  |
| Principal, Veterinary College . .  | Lahore . . .     | 131                              | 133                                      | 136                                      | 204                                      |  |
| Registrar, Co-operative Credit Societies, Punjab.  | Do. . . .        | 330                              | 288                                      | 295                                      | 158                                      |  |
| Superintendent, Lawrence Gardens.  | Do. . . .        | 146                              | 163                                      | 137                                      | 174                                      | Do.  |
| Superintendent, Northern Circle, Survey of India, in charge Riverain Detachment.             | Campbellpore . . | ...                              | 867                                      | ...                                      | 589                                      | Met from Financial Commissioners' allotment. |
| Chief Superintendent, Civil Veterinary Department.   | Do. . . .        | 446                              | 453                                      | 428                                      | 463                                      |  |
| Superintendent, Civil Veterinary Department, North Punjab and North-West Frontier Province.  | Rawalpindi . . . | 236                              | 233                                      | 180                                      | 192                                      |  |
| Superintendent, Civil Veterinary Department, South Punjab.                                   | Ferozepur . . .  | 232                              | 232                                      | 214                                      | 219                                      |  |
| Superintendent, Government Cattle Farm.  | Hissar . . . .   | 49                               | 49                                       | 45                                       | 56                                       |  |
| <b>TOTAL</b>   | ...              | 7,230                            | 7,362                                    | 4,575                                    | 3,782                                    |  |
| <b>Stationery and Printing.</b>  |                  |                                  |  |  |  |  |
| Superintendent, Central Jail Press.  | Lahore . . . .   | 1,10,000                         | 99,106                                   | 1,02,958                                 | 52,179                                   |  |
| Superintendent, Punjab Government Press.   | Do. . . . .      | 18,050                           | 18,474                                   | 18,257                                   | 17,767                                   |  |
| Superintendent, Government Press on a/c Public Works Department, Buildings and Roads Branch. | Do. . . . .      | 4,500                            | 1,571                                    | 1,939                                    | 2,630                                    |  |
| Superintendent, Government Press, on a/c Public Works Department, Irrigation Branch.         | Do. . . . .      | 13,800                           | 11,941                                   | 4,330                                    | 11,447                                   |  |
| Superintendent, Government Press, on a/c Financial Commissioners.                            | Do. . . . .      | 10,000                           | 10,003                                   | 7,832                                    | 5,405                                    |  |
| Superintendent, Government Press, on a/c Inspector-General of Civil Hospitals.               | Do. . . . .      | 4,207                            | 2,647                                    | 833                                      | 955                                      |  |
| Superintendent, Government Press, on a/c Inspector-General of Police                         | Do. . . . .      | 7,100                            | 6,423                                    | 5,898                                    | 5,937                                    |  |
| Superintendent, Government Press, on a/c Inspector-General of Prisons.                       | Do. . . . .      | 800                              | 625                                      | 206                                      | 298                                      |  |
| Superintendent, Government Press, on a/c Registrar, Chief Court, Punjab.                     | Do. . . . .      | 6,400                            | 6,356                                    | 6,331                                    | 3,002                                    |  |
| <b>TOTAL</b>   | ...              | 1,74,857                         | 1,57,146                                 | 1,48,584                                 | 99,620                                   |  |
| <b>Public Works.</b>   |                  |                                  |  |  |  |  |
| Consulting Architect to Government, Punjab.  | Lahore . . . .   | 625                              | 606                                      | 829                                      | 143                                      |  |



## STATEMENT--continued.

| Officers supplied.  | Station.          | Allotments for the year 1915-16. | Value of Stationery supplied in 1915-16. | Value of Stationery supplied in 1914-15. | Value of Stationery supplied in 1913-14. | REMARKS.                                |
|---|-------------------|----------------------------------|--|--|--|---|
| 1   | 2                 | 3                                | 4  | 5  | 6  | 7                                       |
|   |                   | Rs.                              | Rs.                                      | Rs.                                      | Rs.                                      |   |
| <b>Public Works—contd.</b>  |                   |                                  |  |  |  |   |
| Electrical Inspector to Government, Punjab.                       | Lahore . . .      | 250                              | 272                                      | 285                                      | 250                                      | Excess covered by Departmental savings. |
| Sanitary Engineer, Punjab . . .                                   | Do. . . .         | 808                              | 746                                      | 535                                      | 284                                      |   |
| Superintendent, Hindu and Buddhist Monuments, Northern Circle.    | Do . . . .        | 180                              | 173                                      | 164                                      | 512                                      |   |
| Superintending Engineer, First Circle.                            | Rawalpindi . . .  | 300                              | 283                                      | 522                                      | 306                                      |   |
| Executive Engineer, Lyallpur Provincial Division.                 | Lyallpur . . . .  | 250                              | 238                                      | 289                                      | 287                                      |   |
| Executive Engineer, Multan Provincial Division.                   | Multan . . . .    | 300                              | 295                                      | 336                                      | 299                                      |   |
| Executive Engineer, Rawalpindi Provincial Division.               | Rawalpindi . . .  | 450                              | 442                                      | 395                                      | 309                                      |   |
| Executive Engineer, Shahpur Provincial Division.                  | Sargodha . . . .  | 400                              | 392                                      | 331                                      | 348                                      |   |
| Superintending Engineer, Second Circle                            | Ambala . . . .    | 431                              | 397                                      | 420                                      | 279                                      |   |
| Executive Engineer, Ambala Provincial Division.                   | Do. . . . .       | 325                              | 320                                      | 309                                      | 270                                      |   |
| Executive Engineer, Gurgaon Provincial Division.                  | Gurgaon . . . .   | 250                              | 245                                      | 257                                      | 243                                      |   |
| Executive Engineer, Jullundur Provincial Division.                | Jullundur . . . . | 430                              | 418                                      | 473                                      | 434                                      |   |
| Executive Engineer, Kangra Provincial Division.                   | Dharmśala . . . . | 279                              | 258                                      | 353                                      | 229                                      |   |
| Executive Engineer, Simla Provincial Division.                    | Simla . . . . .   | 375                              | 368                                      | 395                                      | 401                                      |   |
| Superintending Engineer, Third Circle.                            | Lahore . . . . .  | 200                              | 152                                      | 133                                      | 189                                      |   |
| Executive Engineer, Lahore Provincial Division No. I.             | Do. . . . .       | 350                              | 304                                      | 483                                      | 449                                      |   |
| Executive Engineer, Lahore Provincial Division No. II.            | Do. . . . .       | 350                              | 339                                      | 454                                      | 390                                      |   |
| Executive Engineer, King Edward Memorial Division.                | Do. . . . .       | 610                              | 580                                      | 417                                      | 439                                      |   |
| Superintending Engineer, Upper Bari Doab Canal.                   | Amritsar . . . .  | 400                              | 382                                      | 364                                      | 363                                      |   |
| Superintendent, Central Workshop Division, Upper Bari Doab Canal. | Do. . . . .       | 975                              | 1,003                                    | 970                                      | 994                                      |   |
| Executive Engineer, First Division, Upper Bari Doab Canal.        | Gurdaspur . . . . | 600                              | 567                                      | 587                                      | 587                                      |   |
| Executive Engineer, Second Division, Upper Bari Doab Canal.       | Amritsar . . . .  | 500                              | 526                                      | 467                                      | 499                                      | Do.                                     |
| Executive Engineer, Third Division, Upper Bari Doab Canal.        | Do. . . . .       | 500                              | 460                                      | 446                                      | 328                                      |   |
| Executive Engineer, Fourth Division, Upper Bari Doab Canal.       | Do. . . . .       | 500                              | 487                                      | 484                                      | 514                                      |   |
| Executive Engineer, Upper Sutlej Division, Inundation Canal.      | Montgomery . . .  | 325                              | 310                                      | 310                                      | 305                                      |   |
| Superintending Engineer, Lower Bari Doab Circle.                  | Lahore . . . . .  | 450                              | 434                                      | 395                                      | 544                                      |   |

## STATEMENT—continued.

| Office's supplied.   | Station.            | Allotments for the year 1915-16. | Value of Stationery supplied in 1915-16. | Value of Stationery supplied in 1914-15. | Value of Stationery supplied in 1913-14. | REMARKS.   |
|--|---------------------|----------------------------------|--|--|--|--|
| 1  | 2                   | 3                                | 4  | 5  | 6  | 7  |
|  |                     | Rs.                              | Rs.                                      | Rs.                                      | Rs.                                      |  |
| <b>Public Works—contd.</b>                                     |                     |                                  |  |  |  |  |
| Executive Engineer, First Division, Lower Bari Doab Canal.     | Balloki . .         | 400                              | 370                                      | 347                                      | 102                                      |  |
| Executive Engineer, Second Division, Lower Bari Doab Canal.    | Montgomery . .      | 550                              | 419                                      | 525                                      | 484                                      |  |
| Executive Engineer, Third Division, Lower Bari Doab Canal.     | Do. . .             | 600                              | 505                                      | 547                                      | 664                                      |  |
| Executive Engineer, Fourth Division, Lower Bari Doab Canal.    | Do. . .             | 500                              | 377                                      | 491                                      | 400                                      |  |
| Superintending Engineer, Upper Chenab Circle.                  | Lahore . .          | 300                              | 281                                      | 261                                      | 254                                      |  |
| Executive Engineer, First Division, Upper Chenab Canal.        | Marala . .          | 340                              | 335                                      | ...                                      | ...                                      | New office.  |
| Executive Engineer, Third Division, Upper Chenab Canal.        | Gujranwala . .      | 750                              | 784                                      | 655                                      | 652                                      | Excess covered by savings accumulated within the Circle. |
| Executive Engineer, Fourth Division, Upper Chenab Canal.       | Lahore . .          | 710                              | 576                                      | 543                                      | 550                                      |  |
| Executive Engineer, Fifth Division, Upper Chenab Canal.        | Gujranwala . .      | 750                              | 724                                      | 593                                      | 679                                      |  |
| Superintending Engineer, Lower Chenab Circle.                  | Lyalpur . .         | 400                              | 322                                      | 322                                      | 324                                      |  |
| Executive Engineer, Buralla Division, Lower Chenab Canal.      | Do. . .             | 400                              | 389                                      | 367                                      | 387                                      |  |
| Executive Engineer, Hafizabad Division, Lower Chenab Canal.    | Khanki . .          | 330                              | 322                                      | ...                                      | ...                                      | New office.  |
| Executive Engineer, Jhang Division, Lower Chenab Canal.        | Jhang . .           | 550                              | 547                                      | 542                                      | 533                                      |  |
| Executive Engineer, Khanki Division, Lower Chenab Canal.       | Khanki . .          | 500                              | 486                                      | 535                                      | 507                                      |  |
| Executive Engineer, Lower Gugera Division, Lower Chenab Canal. | Lyalpur . .         | 500                              | 466                                      | 481                                      | 485                                      |  |
| Executive Engineer, Upper Gugera Division, Lower Chenab Canal. | Do. . .             | 600                              | 563                                      | 567                                      | 573                                      |  |
| Executive Engineer, Lyallpur Division, Lower Chenab Canal.     | Do. . .             | 600                              | 578                                      | 572                                      | 548                                      |  |
| Executive Engineer, Project Division, Lower Chenab Canal.      | Do. . .             | 225                              | 199                                      | ...                                      | ...                                      | New office.  |
| Superintending Engineer, Derajat Circle.                       | Multan . .          | 400                              | 413                                      | 316                                      | 356                                      |  |
| Executive Engineer, Dera Ghazi Khan Canals Division.           | Dera Ghazi Khan . . | 600                              | 573                                      | 570                                      | 565                                      |  |
| Executive Engineer, Lower Sutlej Canals Division.              | Multan . .          | 400                              | 359                                      | 386                                      | 322                                      |  |
| Executive Engineer, Multan Canal Division.                     | Do. . .             | 600                              | 609                                      | 563                                      | 561                                      |  |
| Executive Engineer, Muzaffargarh Canal Division.               | Muzaffargarh . .    | 500                              | 460                                      | 485                                      | 428                                      |  |
| Superintending Engineer, Upper Jhelum Circle.                  | Jhelum . .          | 650                              | 531                                      | 448                                      | 373                                      |  |
| Executive Engineer, First Division, Upper Jhelum Canal.        | Do. . .             | 550                              | 414                                      | 483                                      | 505                                      |  |
| Executive Engineer, Third Division, Upper Jhelum Canal.        | Do. . .             | 420                              | 419                                      | 344                                      | 151                                      |  |

## STATEMENT—concluded.

| Officers supplied.   | Station.                | Allotments for the year 1915-16. | Value of Stationery supplied in 1915-16. | Value of Stationery supplied in 1914-15. | Value of Stationery supplied in 1913-14. | REMARKS.                                   |
|--|-------------------------|----------------------------------|--|--|--|--|
| 1  | 2                       | 3                                | 4  | 5  | 6  | 7  |
|  |                         | Rs.                              | Rs.                                      | Rs.                                      | Rs.                                      |  |
| <b>Public Works—concl'd.</b>   |                         |                                  |  |  |  |  |
| Executive Engineer, Fourth Division, Upper Jhelum Canal.             | Rasul . . .             | 700                              | 668                                      | 557                                      | 788                                      |  |
| Executive Engineer, Fifth Division, Upper Jhelum Canal.              | Bahauddin . .           | 570                              | 571                                      | 476                                      | 549                                      |  |
| Superintending Engineer, Lower Jhelum Circle.                        | Jhelum . . .            | 350                              | 347                                      | 298                                      | 282                                      |  |
| Executive Engineer, First Division, Lower Jhelum Canal.              | Rasul . . .             | 300                              | 276                                      | 292                                      | 292                                      |  |
| Executive Engineer, Second Division, Lower Jhelum Canal.             | Sargodha . . .          | 500                              | 505                                      | 489                                      | 736                                      |  |
| Executive Engineer, Third Division, Lower Jhelum Canal.              | Do. . . . .             | 450                              | 451                                      | 391                                      | 378                                      |  |
| Superintending Engineer, Western Jumna Canal Circle.                 | Delhi . . . .           | 450                              | 214                                      | 320                                      | 335                                      |  |
| Executive Engineer, Delhi Division, Western Jumna Canal.             | Do. . . . .             | 400                              | 368                                      | 425                                      | 453                                      |  |
| Executive Engineer, Hissar Division, Western Jumna Canal.            | Hissar . . . .          | 400                              | 349                                      | 333                                      | 315                                      |  |
| Executive Engineer, Karnal Division, Western Jumna Canal.            | Karnal . . . .          | 400                              | 335                                      | 415                                      | 698                                      |  |
| Executive Engineer, Special Drainage Division, Western Jumna Canal.  | Do. . . . .             | 200                              | 114                                      | 254                                      | ...                                      |  |
| Executive Engineer, Rohtak Division, Western Jumna Canal.            | Rohtak . . . .          | 450                              | 420                                      | 380                                      | 457                                      |  |
| Superintending Engineer, Sirhind Canal Circle.                       | Ambala . . . .          | 300                              | 307                                      | 234                                      | 244                                      |  |
| Executive Engineer, Bhatinda Division, Sirhind Canal.                | Bhatinda . . .          | 400                              | 391                                      | 457                                      | 346                                      |  |
| Executive Engineer, Ferozepore Division, Sirhind Canal.              | Ferozepore . .          | 370                              | 352                                      | 310                                      | 351                                      |  |
| Executive Engineer, Ludhiana Division, Sirhind Canal.                | Ludhiana . . .          | 370                              | 396                                      | 429                                      | 465                                      | Excess met from savings within the Circle. |
| Executive Engineer, Patiala Division, Sirhind Canal.                 | Patiala . . . .         | 140                              | 142                                      | 125                                      | 114                                      |  |
| Executive Engineer, Rupar Division, Sirhind Canal.                   | Rupar, District Ambala. | 600                              | 555                                      | 320                                      | ...                                      |  |
| TOTAL . . . . .  | ...                     | 31,888                           | 29,859                                   | 28,851                                   | 27,451                                   |  |
| Total allotment and value of stationery issued to Presses.           | ...                     | 1,74,857                         | 1,57,146                                 | 1,48,584                                 | 99,620                                   |  |
| Total allotment and value of stationery issued to other departments. | ...                     | 1,22,905                         | 1,14,249                                 | 1,11,074                                 | 1,02,214                                 |  |
| GRAND TOTAL . . . . .  | ...                     | 2,97,762                         | 2,71,395                                 | 2,59,658                                 | 2,01,834                                 |  |

STATE OF WEST BENGAL

| No. | Name of the person | Rank | Grade | Pay |
|-----|--------------------|------|-------|-----|
| 1   |                    |      |       |     |
| 2   |                    |      |       |     |
| 3   |                    |      |       |     |
| 4   |                    |      |       |     |
| 5   |                    |      |       |     |
| 6   |                    |      |       |     |
| 7   |                    |      |       |     |
| 8   |                    |      |       |     |
| 9   |                    |      |       |     |
| 10  |                    |      |       |     |
| 11  |                    |      |       |     |
| 12  |                    |      |       |     |
| 13  |                    |      |       |     |
| 14  |                    |      |       |     |
| 15  |                    |      |       |     |
| 16  |                    |      |       |     |
| 17  |                    |      |       |     |
| 18  |                    |      |       |     |
| 19  |                    |      |       |     |
| 20  |                    |      |       |     |
| 21  |                    |      |       |     |
| 22  |                    |      |       |     |
| 23  |                    |      |       |     |
| 24  |                    |      |       |     |
| 25  |                    |      |       |     |
| 26  |                    |      |       |     |
| 27  |                    |      |       |     |
| 28  |                    |      |       |     |
| 29  |                    |      |       |     |
| 30  |                    |      |       |     |
| 31  |                    |      |       |     |
| 32  |                    |      |       |     |
| 33  |                    |      |       |     |
| 34  |                    |      |       |     |
| 35  |                    |      |       |     |
| 36  |                    |      |       |     |
| 37  |                    |      |       |     |
| 38  |                    |      |       |     |
| 39  |                    |      |       |     |
| 40  |                    |      |       |     |
| 41  |                    |      |       |     |
| 42  |                    |      |       |     |
| 43  |                    |      |       |     |
| 44  |                    |      |       |     |
| 45  |                    |      |       |     |
| 46  |                    |      |       |     |
| 47  |                    |      |       |     |
| 48  |                    |      |       |     |
| 49  |                    |      |       |     |
| 50  |                    |      |       |     |
| 51  |                    |      |       |     |
| 52  |                    |      |       |     |
| 53  |                    |      |       |     |
| 54  |                    |      |       |     |
| 55  |                    |      |       |     |
| 56  |                    |      |       |     |
| 57  |                    |      |       |     |
| 58  |                    |      |       |     |
| 59  |                    |      |       |     |
| 60  |                    |      |       |     |
| 61  |                    |      |       |     |
| 62  |                    |      |       |     |
| 63  |                    |      |       |     |
| 64  |                    |      |       |     |
| 65  |                    |      |       |     |
| 66  |                    |      |       |     |
| 67  |                    |      |       |     |
| 68  |                    |      |       |     |
| 69  |                    |      |       |     |
| 70  |                    |      |       |     |
| 71  |                    |      |       |     |
| 72  |                    |      |       |     |
| 73  |                    |      |       |     |
| 74  |                    |      |       |     |
| 75  |                    |      |       |     |
| 76  |                    |      |       |     |
| 77  |                    |      |       |     |
| 78  |                    |      |       |     |
| 79  |                    |      |       |     |
| 80  |                    |      |       |     |
| 81  |                    |      |       |     |
| 82  |                    |      |       |     |
| 83  |                    |      |       |     |
| 84  |                    |      |       |     |
| 85  |                    |      |       |     |
| 86  |                    |      |       |     |
| 87  |                    |      |       |     |
| 88  |                    |      |       |     |
| 89  |                    |      |       |     |
| 90  |                    |      |       |     |
| 91  |                    |      |       |     |
| 92  |                    |      |       |     |
| 93  |                    |      |       |     |
| 94  |                    |      |       |     |
| 95  |                    |      |       |     |
| 96  |                    |      |       |     |
| 97  |                    |      |       |     |
| 98  |                    |      |       |     |
| 99  |                    |      |       |     |
| 100 |                    |      |       |     |

CALCUTTA  
 SUPERINTENDENT GOVERNMENT PRINTING, INDIA  
 8, HASTINGS STREET











